

Grand View Guernsey is best of breed

A Grand View Farm of Middletown, Dauphin County, showing "Ranking Farm Golden Brown," a 3-year-old, won the grand and senior championships in open class Guernsey judging competition at the 64th Farm Show.

"Shadow Lawn Hol Cissy," a 4-year-old shown by Rutter Brothers of York, York County, won the reserve grand and reserve senior championship honors.

Junior champion was "Wee Manor TC Lucky," a junior yearling exhibited by A Grand View Farm. Another A Grand View Farm entry, "Elma Spring Damion Ramona," a senior yearling, captured reserve junior championship honors. Long Lane Farm of Waynesboro, Franklin County, won the premier breeder award and A Grand View Farm captured the premier exhibitor award.

Renee Anne Fava of Scenery Hill, Washington County, captured grand and senior championship honors in Guernsey youth classes

with "W. S. Esther," a 3-year-old.

Tina Rutter of York, York County, won the reserve grand and reserve senior championships with "Rutter Brothers Pals Faith," a 3-year-old.

Junior champion was "BT Ravena," a heifer calf shown by Jacqueline A. Fava of Scenery Hill, Washington County.

Renee Fava also showed the reserve junior champion, "M Classy," a senior yearling.

Complete Guernsey results were.

Heifer Calf
1 Jacquelle A Fava R1 Scenery Hill
2 Rutter Bros N George St York 3
Todd Rutter Lightner Rd York 4 Ruth
Ann Benedict Manheim Rd York 5
Elizabeth Jenkins Polo Rd
Toughkenamon

Youth Class Heifer Calf
1 Jacquelle A Fava 2 Todd Rutter 3
Elizabeth Jenkins 4 Carl D Miller R3
Tamaqua

Guernsey Jr Yr Heifer
1 A Grand View Farm Peck Rd
Middletown 2 Tina Rutter Lightner Rd
York 3 Elizabeth Jenkins 3 Chad
Rutter Lightner Rd York 5 April G
Lafferty R1 Lykens

Youth Class Jr Yr Heifer
1 Elizabeth Jenkins 2 Chad Rutter 3
April G Lafferty
Sr Yr Heifer
1 A Grand View Farm 2 Renee Anne
Fava R1 Scenery Hill 3 A Grand View
Farm 4 Ruth Ann Benedict 5 Darryl
Rohrbaugh R1 New Freedom

Youth Class Sr Yr Heifer
1 Renee Anne Fava 2 Darryl Rohr
baugh
3 or 4 Dry Cow
1 & 2 A Grand View Farm 3 Alisa
Maria Fava R1 Scenery Hill 4 Ruth Ann
Benedict 5 Rutter Bros

Youth Class 3 or 4 Dry Cow
1 Alisa Maria Fava
5 or Over Dry Cow
1 Jeffrey Benedict Manheim Rd
Waynesboro

Youth Class 5 or Over Dry Cow
1 Jeffrey Benedict
2 and Under 3 Heifer
1 Jeffrey Benedict 2 William G
Zollers Jr Mertztown 3 Kevin L
Benedict Manheim Rd Waynesboro 4
Jon A Zollers 5 William G Zollers Jr
Mertztown

Youth Class 2 to 3 Yr Cow
1 Jeffrey Benedict 2 Kevin L
Benedict 3 Kevin L

3 and Under 4 Cow
1 A Grand View Farm 2 John Mar
chezak R1 Bentleyville 3 Renee Anne
Fava 4 Frederick A Hobaugh R1 York
5 Jon A Zollers

Youth Class 3 to 4 Yr Cow
1 Renee Anne Fava
4 and Under 5 Cow
1 Rutter Bros 2 A Grand View Farm
3 Tina Rutter 4 Darryl Rohrbaugh 5
Alisa Maria Fava

Youth Class 4 to 5 Yr Cow
1 Tina Rutter 2 Darryl Rohrbaugh 3
Alisa Maria Fava

5 and Over Cow
1 A Grand View Farm 2 Ruth Ann
Benedict 3 Timmy Rutter 4 Renee Anne
Fava 5 Frederick A Hobaugh

Youth Class 5 and Over Cow
1 Timmy Rutter
Championship Udder
1 Rutter Bros

Premier Breeder
1 Jeffrey Benedict
Premier Exhibitor
1 A Grand View Farm
Exhibitor Herd
1 A Grand View Farm 2 Rute Bros
4 Alisa Maria Fava 1 Jeffrey Benedict
5 Frederick A Hobaugh

Pa. team wins first Sheep to Shawl contest

HARRISBURG — The first Sheep to Shawl contest was held at this year's Farm Show. The event was sponsored by the Adams County Sheep Producers Association and the Pennsylvania Department of Agriculture.

Four teams competed in the contest from four different states, including Pennsylvania, New Hampshire, Maryland, and Virginia. Each team consisted of five members. One member sheared the sheep,

three were spinners, and one was the weaver.

The contest was a timed event, measuring the speed each team could start with a sheep, shear it, and take the wool through the spinning process until it could be woven into a shawl.

Winning the competition with a time of one hour and thirty minutes was the Pennsylvania team, consisting of Kenneth Scott Murdoch, R2 Gettysburg, shearer; Brenda Bothe, R1 Bechtelsville, spinner;

Shawn Worley, New Cumberland, spinner; Gunny Leber, Camp Hill, spinner; and Cheryl Mampe, Bendersville, weaver.

The longest time to complete the sheep to shawl project was two hours and ten minutes.

The team members had never worked together before Wednesday. While the contest was going on, spectators were allowed to watch and mingle with the teams.

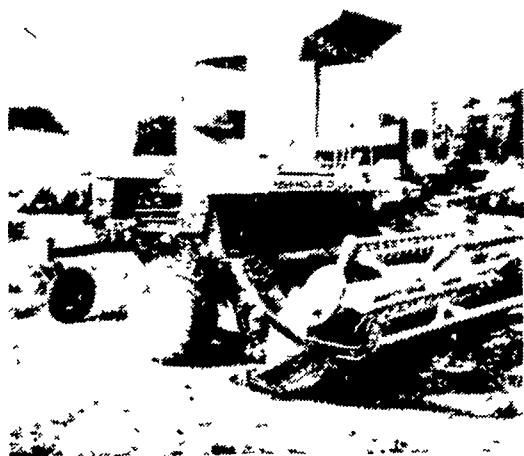
Sylvania team had the Suffolk wool

Pauline Murdoch, vice-president of the Adams County Sheep Producers Association and mother of the Pennsylvania team's shearer, explained the Suffolk sheep was able to be shorn in a faster time. Otherwise, there was no advantage in spinning the wool. It was suggested fleeces of Dorsets or Cheviots were the best spinning wools.

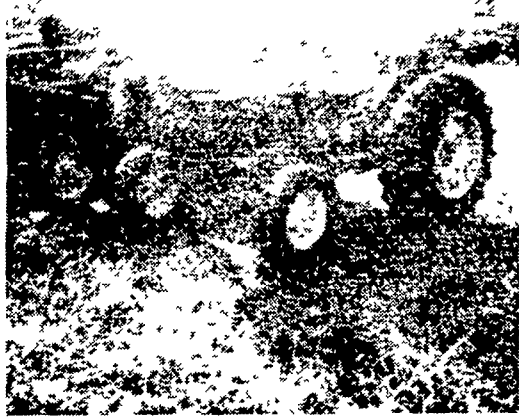
Participants of the contest said they thought it was a successful event. They said they had a lot of fun, and they felt the Farm Show spectators enjoyed watching and participating.

Four different types of sheep were shorn in the contest. The breeds represented were Hampshire, Columbia, Lincoln, and Suffolk. The Penn-

We extend **CONGRATULATIONS** to all the winners at **THE PENNA. STATE FARM SHOW**



USED HAYBINE
NH 1495 Self-Propelled 12' w/partial cab-Real Sharp! ... **\$14,750.**



USED TRACTOR
John Deere 1520 Diesel ... **\$5,850.**

USED TRACTORS
Oliver 1800 Diesel **\$4,850.00**
IHC Super C, fast hitch w/2 bottom plow **1,675.00**
Farmall M **1,250.00**

USED SPREADERS
JD 40 w/hydraulic end gate **\$1,050.00**
NH 516 **975.00**
NH 510 single beater **850.00**
NH 12A **450.00**

USED HARVESTER SPECIALS
NH 880 2-row narrow row head **\$3,650.00**
NH 717 w/1-row head **2,195.00**
NH 717 **1,175.00**
Fox 1000 RPM PTO w/2-row corn hd & Pk up attach **1,495.00**
MF 620 w/2 row and pickup **2,450.00**

USED BALER SPECIALS
John Deere 14T **\$750.00**
John Deere 14T w/ejector **450.00**

USED GRAIN DRILLS
Co-op 15x7 Fert Grain Drill w/grass seed attach **\$750.00**
John Deere 15x7 FBB Drill **450.00**

USED MOWER CONDITIONERS HAYBINES
New Holland 479, as is **\$2,150.00**
Hesston 320 9' **1,850.00**
Gehl 770, 7 ft **1,975.00**

USED PLANTER SPECIALS
Tag 11934 JD 494 **\$1,275.00**
Tag 1229 Ford 4 Row **775.00**

USED TILLAGE SPECIALS
Ford 4x18" auto reset plow **\$2,200.00**
Ford 4 16" Plow **950.00**
JD KBA 32x18 Wheel Carrier Disc **875.00**
Brillion 10' Cultmulcher **850.00**

USED COMBINE SPECIALS
Cockshutt 427 w/Power Steering & 10' Platform **\$1,450.00**
JD 55 Corn Soybean Special 12' head **9,700.00**
JD 55 Diesel w/cab, 12' platform **7,500.00**

MISCELLANEOUS
John Deere #18 1-row Corn Picker **\$950.00**
New Set 18 4x30 Snap on Duals w/New Goodyear 6 Ply Tires **1,050.00**
Used NH #8 Crop carrier **1150.00**

OIL SALE FILTERS
5 Gallon Engine Oil **\$ 15.50**
55 Gallon Engine Oil **148.00**
T19044 Filter **3.20**
AR43634 Filter **7.40**
AR28110 Filter **6.50**
5 Gallon Hydraulic Oil **15.50**
55 Gallon Hydraulic Oil **155.00**
AR75601 Hydraulic Filter **7.20**
SALE PRICE GOOD THRU JANUARY 26, 1980

Indiana, Cambria rule Christmas tree contest

HARRISBURG — Indiana, Cambria, and Crawford County growers greened the Farm Show with entries in the Christmas Tree Contest.

And Farm Show judges responded by presenting their trees with the bulk of the blue and red ribbons at the 1980 Show.

Among the winners are:

SCOTCH PINE
1 Carino Nurseries Indiana 2 Leiden s Nursery Patton 3 Berkey s Nursery Jefferson St Spartansburg 4 Meyers Nursery R1 Creekside 5 Maple Hill Farms R3 Wellsboro

DOUGLAS FIR
1 Carino Nurseries 2 Gay Fad Nurseries R1 Mohnton 3 Berkey s Nursery 4 Omil s Tree Farm R4 Pottsville 5 Maple Hill Farm

COLORADO BLUE SPRUCE
1 Rush Shanahan R2 Honey Brook 2 Carino Nurseries 3 Maple Hill Farm 4 Berkey s Nursery 5 Leiden s Nursery

SPRUCE
1 Leiden s Nursery 2 Carino Nurseries 3 Proctor Wetherill Chester Springs 4 Carroll s Nursery R4 Cochanton 5 Spring Hill Farm R1 Dalton

WHITE AND BLACK HILLS
1 Spring Hill Farm 2 Berkey s Nursery 3 Carino Nurseries 4 Leiden s Nursery 5 Maple Hill Farm

OTHER
1 Leiden s Nursery 2 Carino Nurseries 3 Meyer s Nursery

PINE AUSTRIAN AND RED
1 Carino Nurseries 2 Leiden s Nursery 3 Albert Troutman RB Carlisle

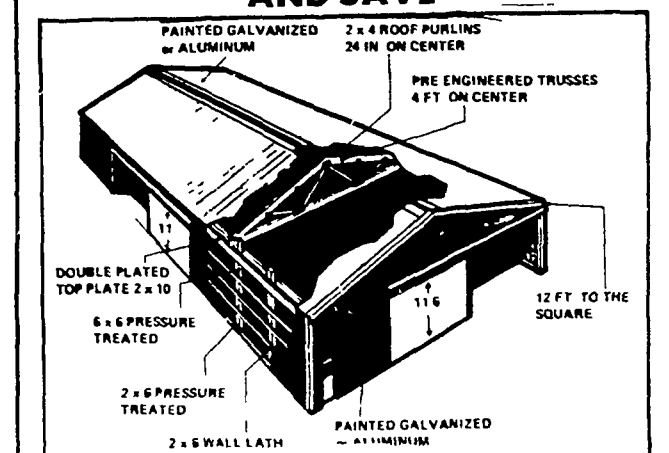
WHITE
1 Omil s Tree Farm 2 Carino Nurseries 3 Leiden s Nursery 4 Pinecrest Farms R2 New Ringold 5 JB Tree Farm W 3rd Street Williamsburg

BALSAM AND FRASER
1 Eric Sundback Greentwig Road Bethesda MD 2 Berkey s Nursery 3 Leiden s Nursery 4 Carino Nurseries 5 Maple Hill Farm

CONCOLOR AND OTHER
1 Carino Nurseries 2 Omil s Tree Farm 3 Spring Hill Farm



BUILDINGS FOR EVERY NEED
Quality Built & Expertly Constructed Machinery, Confinement, Storage Compare & Then Call Us **AND SAVE**



BILL & STAN INC.
RD1 Brogue, PA (717) 927-6092
Serving York, Lancaster & No. MD



Evergreen Tractor Co. Inc.

30 EVERGREEN RD., LEBANON, PA 17042,
PHONE (717) 272-4641

AUTHORIZED
SPERRY-NEW HOLLAND
PARTS and SERVICE