

Krause shows top female, South Branch - top bull

HARRISBURG — Diane Krause, the 1980 Pennsylvania State Angus Queen, showed the grand champion female Angus beef cow and the Kinsley's South Branch Farm of York exhibited the grand champion bull.

The female champion, a junior yearling, "ABF Grand Erica," was also judged the show's junior champion.

The reserve grand champion was "EdLyn's Sapphire Lady 630," a heifer calf, owned by Rishels EdLyn Farm of Glen Rock, York County. The same animal was judged the junior heifer calf champion.

The grand champion female, Erica was sired by Black Cap Grader.

Diane Krause explained, "my father buys a heifer for my sister and myself each year. We are using these heifers to build our herd."

This champion was bought in Vermont.

The Farm Show's female champion also was chosen the grand champion female

in the Keystone Expo's open class. In the junior show, it was named the reserve champion heifer.

Diane is the 16 year old daughter of Mr. and Mrs. Paul Krause, Slatington, Lehigh County.

She was crowned the 1980 Angus Queen during the Angus Association's banquet at the Shindler's Restaurant on January 8.

In the other angus female competition, the reserve junior champion was "South Branch Barbara 802," a January - February calf owned by South Branch Farms of York.

Senior heifer calf champion, "Twin Oaks Princess Pat," a November - December heifer, was exhibited by Fritz Frey, of Quarryville. Fritz is the son of Mr. and Mrs. Fred Frey. He has been showing Angus cattle for three years.

Monique Sweigard of Halifax showed the reserve senior heifer calf champion, "HF Corrie Lass 854," a September - October heifer.

Intermediate champion

was "Za Lucky Charm," a May-June heifer, exhibited by Carol Krause of Slatington.

William A. Wise of Spring Grove, York County, exhibited the reserve intermediate champion, "Powells MS Excursion Star," a July-August heifer.

"MB. Master Princess," a winter calf shown by Kirke McKean of Merver, Mercer County, was judged reserve junior heifer calf champion.

The Angus Bull competition was also stiff.

"South Branch Dynamos Pride," a senior calf captured both the grand and junior calf championships.

This champion was sired by the South Branch herd sire, "Sayre Dynamo 4416". Dynamo was chosen as the bull champion two years ago.

South Branch Farms also exhibited the senior champion bull, "PS Energizer," a two year old.

The Farm, managed by Bill and Pat Halloway, took home the premier exhibitor plaque for the Angus competition.

Bill Halloway, the South Branch Farm manager, noted, this is the first year the Farm has exhibited a large enough number of Angus to earn this honor.

Last year, South Branch Farm exhibited the champion Angus female.

The reserve grand champion bull, was "DS Band," a March junior yearling shown by Deveraux - Soleil Farm of Downingtown. The same bull was judged the show's junior champion.

The reserve junior bull champion, "Rally Motivator," an April junior yearling, was shown by Erdenheim Farm of Lafayette Hill, Montgomery County.

Senior bull calf, "Waltz Massive Lad," was exhibited by William J. Warren of Furlong, Bucks County. Reserve junior bull calf champion, "Gallaghers



Bill Halloway, manager of the South Branch Farm, York, exhibited the grand champion Angus bull in the open breeding competition. The champion, "South Branch Dynamos Pride," is a senior calf. Also pictured is Pat Halloway, center, and Mrs. Robert Kinsley, left, part-owner of South Branch Farm.



Fritz Frey of quarryville exhibited the senior heifer calf champion, "Twin Oaks Princess Pat," a November - December heifer.

Paul Revere," was exhibited by Cecil W. Teets of Freedom, Beaver County.

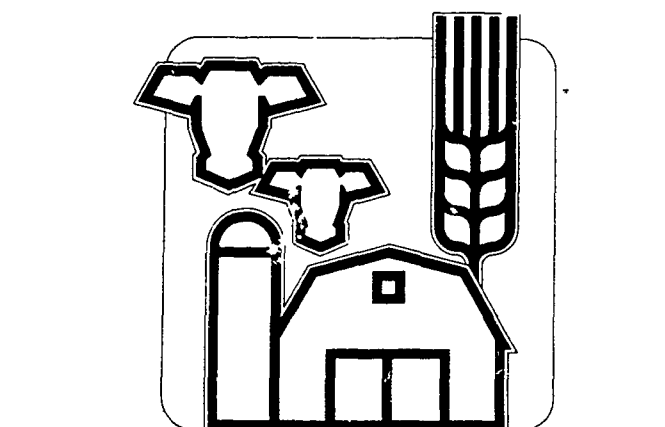
Intermediate senior bull calf champion, "Seldom Seen Andrea GN," also was shown by Teets.

The reserve senior bull calf champion, was "Ps Profile 805. It was shown by Arthur Tresch of Beaver Falls, Beaver County.

The judge for the open

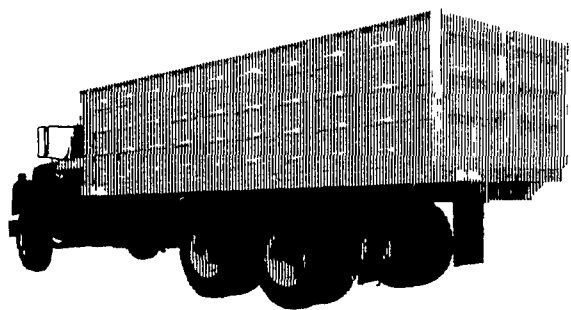
Angus competition was Jerry Helgren of Picket Fence Farms, Grayslake, Illinois.

Following is a list of the Open Angus breeding competition results.



Livestock & Grain Bodies

Bigger Than Ever, Better Than Ever



■ One-piece roll formed steel sides with built in tarp rail Available in 28", 40" and 52" extra-capacity heights all with maximum corrugation for maximum strength

■ 40" and 48" hardwood sides also available the truck body Omaha Standard built its reputation on

■ The toughest platform in the business—laminated wood, smooth steel or tread plate

■ Easy-conversion hardwood upper racks greater flex and life than steel fold down racks

■ A full line of rugged gates all engineered to make your job easier

FARMERSVILLE EQUIPMENT INC.

RD4, Ephrata, PA 717-354-4271
Hours: Mon., Tues., Wed., Fri. - 7:30 to 5:30
Thurs. till 9:00; Sat. till 3:00

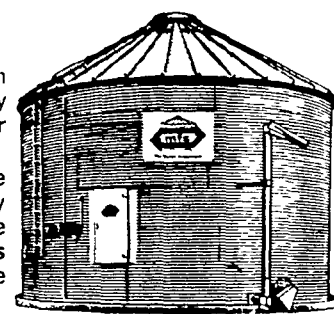
Omaha Standard



the
price
is right

...right now!

Early-order discounts now in effect! Order now take delivery later - get big savings on all your "Stor-Age" and drying needs. Major steel corporations have increased their prices recently which will be reflected in future prices. See your nearest mfs dealer for big savings that are yours by buying now!

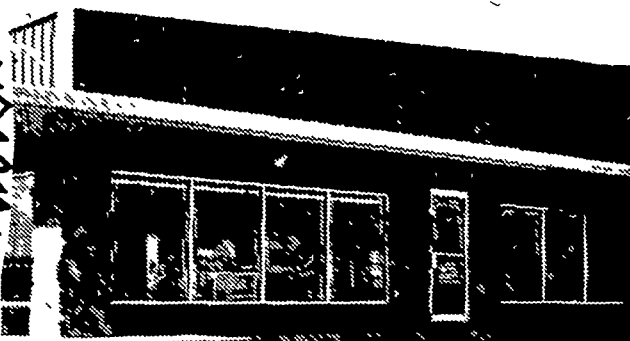


VERNON MYERS, INC.

STEEL BUILDINGS & GRAIN STORAGE

R.D. 4 - Box 845
Lebanon, Pa. 17042
Phone: (717) 867-4139

LARGEST
DISCOUNTS
EVER
OFFERED
NOW IN
EFFECT



COMMERCIAL and AGRICULTURAL BUILDINGS
We Offer Complete Erection On Any Size Or Style Building.

Mail Coupon Today!

☐ SEND STEEL BUILDINGS LITERATURE
☐ SEND GRAIN STORAGE LITERATURE

NAME _____

ADDRESS _____

CITY _____ STATE _____ ZIP _____

TELEPHONE _____