

How to figure cash flow on rabbits

BY HERBERT C. JORDAN
Penn State
Poultry Specialist

UNIVERSITY PARK —
One \$20 breeding doe eight months old can produce 100 marketable offspring during her three year productive life.

These young, nine-week-old rabbits at five pounds each can sell for \$10 when used for laboratory purposes or \$2.50 live, wholesale for meat purposes or \$4 each for a three-pound dressed fryer

retail to the consumer.

So, the gross capital flow or revenue or income generated by one breeding doe in three years can be \$1000 selling all bunnies to laboratories; \$250 selling live as live wholesale at 50 cents per pounds on the hoof; whereas retail sales of all 100 young rabbits at \$4 each for meat would generate \$400 total income or revenue. This budget requires a working manager.

Expenses subtracted from this revenue would include a charge of \$10 for housing, \$5 interest on equity, \$10 miscellaneous charges, \$30 charge for parent breeding stock, \$10 for equipment cost, \$20 labor cost and \$170 feed cost.

Adding all these together give expenses of \$255 producing all 100 young from one breeding doe over a three year period.

We further see that selling all rabbits wholesale for

meat would not be profitable; however, selling for laboratory purposes could turn a seven hundred forty-five dollar profit in three years.

This, however, would require selling disease-free stock which takes knowhow and superb management to accomplish. Only a few do well in lab rabbits.

If we add a processing and marketing expense of \$1 per rabbit to the \$2.55 production cost per rabbit we then total

production, processing and marketing cost of \$3.55 per dressed oven-ready rabbit.

The 100 young rabbits then have a total PPM (production, processing, marketing) cost of \$355 and an income of \$400 or a profit per doe of \$45 over a three year period. Some experienced rabbit growers' production costs are lower and profits higher.

All of the above calculations are estimates

and can only take place if the rabbit producer has a satisfactory market for rabbits all year round.

To profit from rabbits the grower must be a professional who has considerable experience and 30 to 500 breeding does.

Some rabbit growers do quite well financially with rabbits while many lose money. The financial variability in the rabbit business is still quite wide.

SAVE \$\$\$

Ask Us For Repowering

REPOWER

WITH VM DIESEL

Harvesters, Haybines, Tractors, Cornpickers, Balers, Hydraulic Systems, Corn Binders, Choppers

SAVE \$\$\$

Ask Us For Repowering



1050 SU SERIES



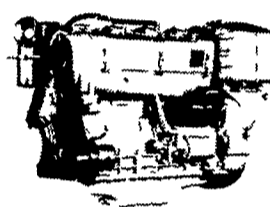
2800 R.P.M.
22 SAE HP
20 DIN HP



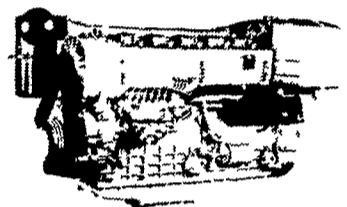
2800 R.P.M.
44 SAE HP
40 DIN HP



2800 R.P.M.
66 SAE HP
60 DIN HP



2800 R.P.M.
88 SAE HP
80 DIN HP



2800 R.P.M.
132 SAE HP
120 DIN HP

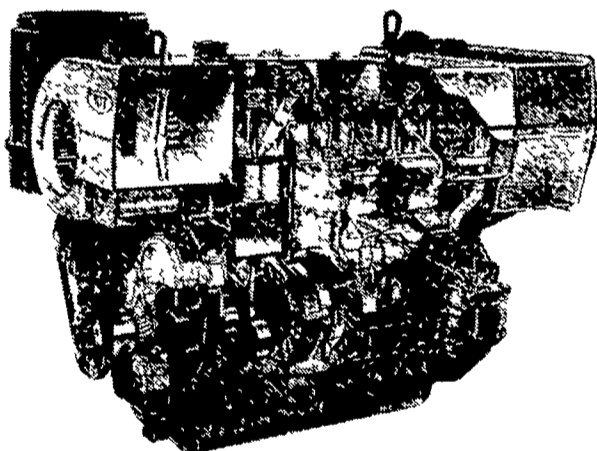
THE NEW AND REVOLUTIONARY FAMILY OF ENGINES

All New HR Series

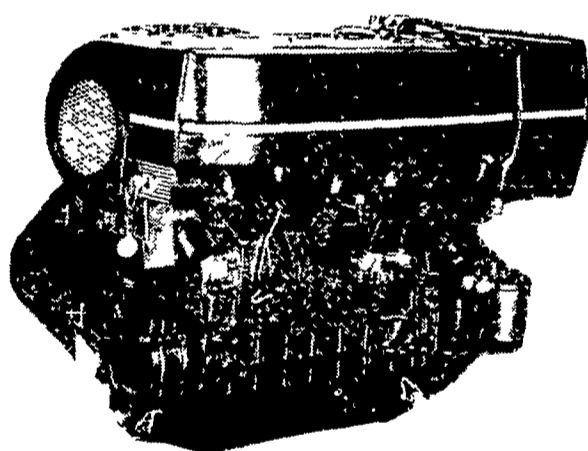


Oil Cooled Jacket

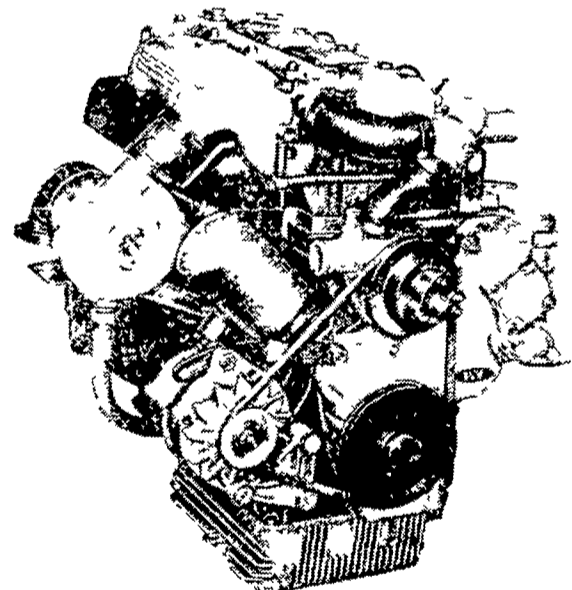
OIL COOLED



AIR COOLED



WATER COOLED



General Features:

- Integrally cast cylinders with inserted and removable wet type cylinder liners
- Light hypereutectic alloy pistons
- Extra-resistant steel connecting rods alloyed with special alloy head bearings
- Surface hardened steel crankshaft
- Drop-forged, casehardened and tempered steel camshaft
- Anti-friction cast-iron tappets alloyed
- Cast-iron tunnel type crankcase
- Rotatory injection pump with mechanical governor

- Force-feed lubrication with built-in circuit and lobe type pump
- Diaphragm pump feed
- Oil and fuel filters with integral type element.

Special structure and patented engine with consequent increases in performance and easier operation with low weight/output ratio low smoke emissions.

Engine based on a design "modulus" formula which allows a maximum parts standardization and interchangeability.

USED DIESELS

- (5) SR 2 Lister
- (1) DVA 1500 Slanzi
- F6L - 912 Deutz
- (1) 100 hp Lister
- (1) Cylinder Deutz
- (2) SR 3 Lister
- DVA 2220 Slanzi
- F2L - 912 Deutz

Ask For Horsepower Ranges Of Above
THE "RIGHT FROM THE START" DIESEL ENGINE LINE
FOR FAULTLESS PERFORMANCE

QUEEN ROAD REFRIGERATION

Box 67, Intercourse, PA 17534

Phone: John D. Weaver - 717-768-9006 or 768-7111
or Answering Service - 717-354-4374

24 HOUR SERVICE