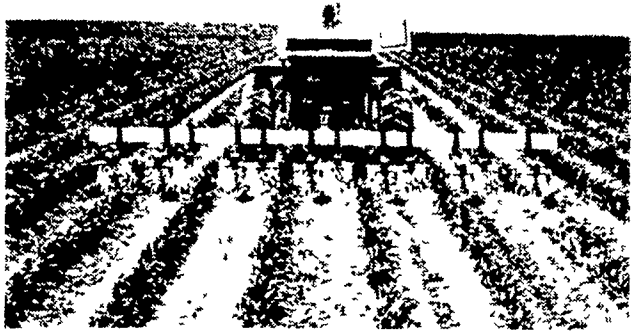


"It is indeed one of the most remarkable tools I have seen in many years"



That statement about the Rolling Cultivator was made by one of the nation's top farm editors shortly after it was introduced

Today, some 17 years later, his appraisal is truer than ever. The multi-patented Rolling Cultivator has compiled a cost-cutting, farm profit record that is probably unmatched by any other single farm tool in its time.

Its exceptional value to the farmer is documented fact. The many jobs it does, from pre-plant to layby, has saved so much fuel and time and labor the totals are beyond calculation.

This "most remarkable tool" continues to out-run, outperform and outdate anything else in its field. There is still only one Rolling Cultivator—and it was made especially for you.

THE ONE • THE ONLY • THE ORIGINAL Lilliston-Lehman

ROLLING CULTIVATOR®



CULTIVATES CROPS • BUILDS BEDS • INCORPORATES CHEMICALS
BARS OFF • LAYS BY • MULCHES CRUSTS • AERATES SOIL
PRESERVES MOISTURE

The Fastest, Finest Tillage Tool On Earth

**Lilliston
LEVELIZER**

Available in 4-row, 6-row, 8-row and 12-row models.



**FAST, CLEAN-SWEEP
CULTIVATION
A BRUTE IN HEAVIER SOILS**

How do you come up with the best? Well, what Lilliston did was find out what's wrong with the others.

Before building the Levelizer, we asked farmers what was good and what was bad about cultivators of this type.

They told us all right and on their specifications we put together a heavy-duty tool (probably the heaviest in its class) just like they wanted it.

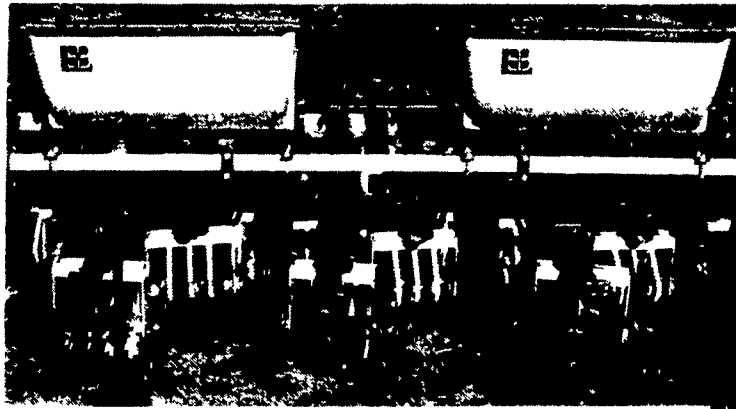
The result is a cultivator that gives you pinpoint control — an easy to adjust machine that's big and tough yet handles like a lightweight.

You'll really like this one.



**NOW AVAILABLE
for CULTIVATORS
and BEDDERS**

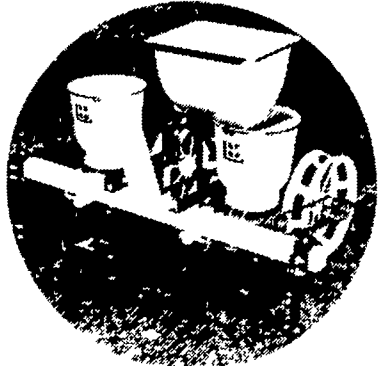
**Lilliston
Fertilizer Attachments**



Featuring

- corrosion-free fiberglass hoppers in 240-pound and 400-pound sizes.
- precision distribution rate controls from 10 to 600 pounds per acre.
- hydraulic drive for bedders and ground-driven or hydraulic drives for cultivators.
- bedder injector knives and cultivator spout holders.

**LILLISTON
Quality-First
PLANTERS**

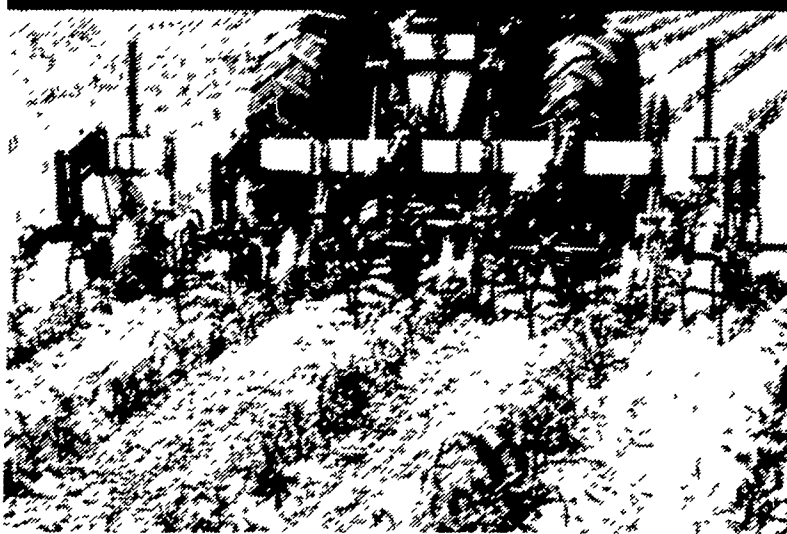


At Lilliston, we're very careful about introducing new products. There's no sense duplicating others—we've got to be sure we're selling a product that's going to give you more for your dollar.

**LILLISTON
Quality-First
PLANTERS**

will do just that. With exclusive planting features you won't find on any others, Lilliston Planters can be customized to just about any operation, any soil condition.

**THE DIFFERENCE IN "S" TINE CULTIVATORS?
WAIT TILL YOU SEE THIS ONE**



**LILLISTON'S NEW
SPEEDALONG IT**

Lilliston's field research revealed that making adjustments on most cultivators took too much time. Things were too complicated.

The Lilliston idea—keep it simple and make it as easy as possible to get very, very precise cultivation.

We put it all into a tough, solidly built tool that we think has no comparison when it comes to any "S"-tine cultivators made.

It's not only the newest that we know of, we're sure it's the best. We wouldn't make it any other way.

**Lilliston
CORPORATION**

ALBANY GEORGIA • CORDELE GEORGIA
FACTORY BRANCHES WACO TEXAS • WELDON NC • SIOUX CITY IOWA
FREEPORT ILLINOIS • GROSSO MICHIGAN • TULARE CALIFORNIA
WAREHOUSES LUBBOCK TEXAS AND WEST MEMPHIS ARKANSAS
PIONEERING PRODUCTS TO SERVE MANKIND



WHEN IT'S BUILT BY LILLISTON, IT'S GOT TO BE GOOD.

TILLAGER®

**Is there anything
else like it?
Not on this earth.**



At a time when cost-cutting is so important, the big, brawny Tillager comes on mighty strong. Chopping stalks and residue, ripping plowpans, anchoring moisture-holding mulch into topsoil, the Tillager introduces once-over, one-pass land preparation. A real cost-crusher, farmers report savings running into five figures in one year. That's what you call value, the kind you take to the bank.



**THE 7600 Series
TILLAGER**

features an exclusive three-module interchangeable system that includes:

Front Module: nine 6-bladed steel chopper gangs that chop previous crop and other residue into bits and pieces that decay faster and are easier to work into topsoil.

Center Module: three rows of 13 heavy-duty, high clearance chisels break up hardpan, improve water penetration and partially cover crop residue.

Rear Module: nine more chopper gangs reduce clods and slabs to a smooth mulch.

The Tillager puts it all together, combining what were once a number of separate operations into one. It's the greatest get-together yet.

DISTRIBUTED BY

J. S. WOODHOUSE CO., INC.

"Serving Northeast Agriculture Thru Equipment Dealers Since 1843"

Syracuse, N.Y. 13206 111 Baker St. 315-463-5201	Camphill, Pa. 17011 2310 Gettysburg Rd. 717-737-0591	West Springfield, Ma. 01089 1314 Union St. 413-739-5607	Waterville, Me. 04901 Sanger Ave. 207-873-3288
--	---	--	---