

Gasohol

(Continued from Page A13)

staff of 50 technicians and management personnel would be required.

But such a plant could make a gallon of alcohol for between 60 and 70 cents.

And Loser added he felt an automobile could be made to run efficiently on a 20 percent alcohol mixture without any major changes in compression or carburation.

The money for a major undertaking such as Loser outlined is available, according to Robert J. Gereg. Gereg represents the Chicago-based Transfirst Corporation which helps with financing of such projects.

Gereg outlined several plans to provide financing for big gasohol plants.

He said a group of 350 farmers in Indiana have formed a co-op. The farmers have a \$20 million project to produce a gasohol plant.

All aspects of the plant are

contracted. He said this was just one of many options open to farmers who want to get into gasohol in a big way.

He said the days of 80 or 90 percent financing for any project are long past. And many big lenders are cautious about getting into a yet-unproven field like gasohol which has no track record and unknown collateral value.

Gereg said anyone anticipating a large scale project would have to prove financial viability, show they can control the raw product needed to produce the gasohol, prove they have a market for their output, and demonstrate their technology and personnel is modern enough to be applied to today's conditions.

Myron Reaman encouraged farmers to ask USDA for Miscellaneous Publication 695, Industrial Alcohol.

It was printed in 1950 and no longer is available. But Reaman said he felt if USDA got enough requests for the bulletin that it might update and reprint it.

The publication contained valuable information on gasohol production.

Reaman, head of the National Gasohol Commission in Nebraska, said the Pennsylvania turnout Thursday was the largest he had seen in any state.

He said the National group was formed in January 1978.

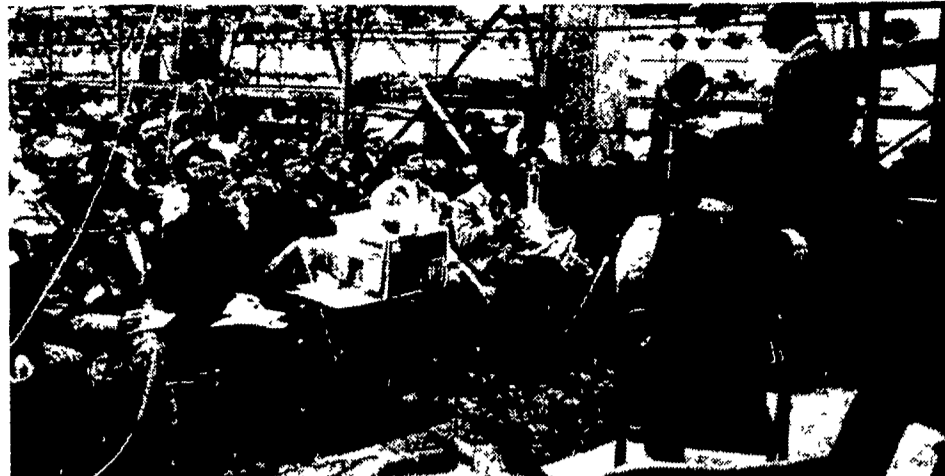
Since that time, he said, it grew to 375 people in 1979, and reached 8000 members by the first of 1980. He projected membership at 21,000 in 1981.

The National Gasohol Commission is located at 521 South 14th Street, Lincoln, Nebraska 68508.

Reaman said the group was active in legislative and informational services for those interested in gasohol.

"If I can keep Washington out of this for another six months we can have a good chance of getting this gasohol program off the ground," he said.

If the attendance at the meeting was any indication, the gasohol idea in Pennsylvania should fly. — CH



A packed house and buzzing TV cameras listened as Edmund Reynolds, Chairman of the State Gasohol Commission, announced the birth of the group committed to renewable fuel sources.



Biochemist E. Kendall Pye told the first meeting of the State Gasohol Commission that ethanol production was possible "right at this moment".

Farm Calendar

(Continued from A10)

Horticulture and Horse council meetings at 7:30 p.m. in the Extension Center.

Dover Young Farmers dairy nutrition meeting, 7:30 p.m. in the Dover High School ag classroom.

Perry County COWAMP meeting in the New

Bloomfield Fire Hall, 7 p.m.

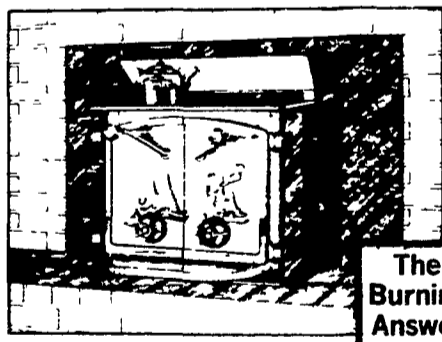
Thursday, January 10
The Southeast Pennsylvania Nursery meeting at the Westover Inn and Country Club, Jeffersonville. Registration begins at 1:30 p.m.

Adams County COWAMP meeting in the American Legion Building, 7 p.m.



FISHER

Fireplace — INSERT



The
Burning
Answer

Heavy plate steel construction... Heavy-duty 1/4" and 5/16" mild steel plate throughout.

Firebrick lining...

See for yourself why, with scores of wood stoves on the market these days, hundreds of thousands of homeowners all over have chosen the Fisher.

Easy to install.

Triple-sealed door ...

Spin-draft control ...

★ ALL FISHER MODELS IN STOCK AT DISCOUNT PRICES

• WE STOCK; Chimney Brushes, Ceiling Registers, Insulated Chimney and a wide variety of Woodburning Stoves.

Bowman's Stove Shop

R.D. 3, Naperville Road
Ephrata, PA 17522

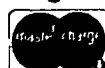
Follow the signs from the
Light at Hinkletown

717-733-4973
Financing Available

Tues., Wed., Sat. 9-5

Thurs., Fri. 9-9

Closed Monday



NEW HOLLAND GRINDER-MIXER HEADQUARTERS



Why should you buy a grinder mixer?
Sperry New Holland wants you to know.

1. Convenience — You have complete control over the type of ration you desire!
2. Disease prevention — No worry about disease being brought to your farm by a custom operator or bulk feed delivery.
3. Good quality feed — You have complete control over ingredient quality and quantity!
4. High return on investment — Save money on labor, feed costs, and transportation charges. Save on supplements by buying in larger quantities.

Stop in and we'll show you why more farmers choose Sperry New Holland Grinder-Mixers
★ ALL SIZES OF GRINDER-MIXERS IN STOCK, OPTIONS AVAILABLE ★



SPERRY NEW HOLLAND

ABC GROFF, INC.

Since 1890

STORE HOURS
Mon., Tues., Wed. 7-5
Thurs., Fri. 7-9
Sat. 7-4

110 S. Railroad Ave.
New Holland, PA 17557

Parts 717-354-4191
Sales 717-354-4731
Service 717-354-8004