

# Livestock market and auction news

## Western Maryland Market

December 19, 1979  
**BUTCHER CATTLE:** Fat steers no choice offered; good 62.00-64.50; Standard 60.00-61.50; Heifers Standard 60.00-60.00; Cows steady to 50 cents higher; Good Cows 60.00-56.00, few to 58.00; Standard & Utility 50.00-50.00; Canners 48.00-51.00; Shelly 48.00 Down; Bulls few offered, Medium 1200-1600 lbs. 55.00-58.00.  
**BUTCHER HOGS:** prices steady! Top Hogs 41.50; Bulk 40-260 lbs. 40.50-41.00, 170-300 lbs. to 35.00; Heavy weights 300-400 lbs. 30.00-35.00; Sows 400-600 lbs. 29.00-30.00; 200-350 lbs. 24.00-29.00; Boars 400-600 lbs. 23.00-23.60.  
**VEAL CALVES:** bidding active, light cfs. higher. Cows to 114.50; Good-Choice 100-114.00; Standard 85.00-90.00; Light Calves 70.00-75.00; Weak & Rough 70.00 own.  
**CALVES RETURNED TO FARM:** Holstein Heifers 95-25 lbs. 120.00-145.00; Holstein Bulls 105-115 lbs. 100.00-125.00, several to 85.00.  
**STOCK CATTLE:** smaller in, prices steady to 5.00 lower. Stock Steers Good & Choice 300-500 lbs. 75.00-77.00; Good 600-800 lbs. 64.00-65.00; Stock Heifers Good 300-550 lbs. 55.00-65.00; Stock bulls Good 300-500 lbs. 60.00-65.00; one bred heifer at 30.00.  
**PIGS AND SHOATS:** mostly steady prices. By the head 15-30 lbs. 10.00-22.00; 40-60 lbs. 20.00-32.00; By the lb. 120-160 lbs. 32.00-35.00.

**SLAUGHTER STEERS:** Pkg. Choice & Prime 3-4 1065 lbs. 71.75; few Choice 2-4 1100-1250 lbs. 66.10-68.85; few Good 2-4 965-1295 lbs. 61.50-64.00.  
**SLAUGHTER HEIFERS:** Choice 3-4 800-900 lbs. 66.25-66.35; Standard and Good 2-3 800-1200 lbs. 55.50-59.75.  
**COWS:** Utility 2-3 and Commercial 3-4 48.85-54.50; few 54.75-55.25; Cutter 45.25-50.60; couple 51.60-51.85.  
**BULLS:** YG 1-2 1200-2300 lbs. 58.70-65.50.  
**FEEDER CATTLE:** Medium Frame #1 steers several 400-555 lbs. 75.00-84.00, pkg. 765 lbs. 69.50.  
**HOGS 600:** Barrows & Gilts \$1.75 higher. US 1-2 200-240 lbs. 41.50-41.75, few 42.00; US 2-3 230-260 lbs. 40.75-41.50.  
**SOWS:** Steady to 50 cents higher. US 1-3 300-600 lbs. 28.50-29.00, few 29.25-29.50.  
**VEAL AND CALF AUCTION 25:** Few Good & Choice 100-210 lbs. 77.00-88.00; 70-100 lbs. 64.00-77.00.  
**SHEEP AUCTION:** Individual Choice wooled slaughter lambs 95 lbs. 68.50; pair 125 lbs. 60.50.

91.00-96.00; Good 83.00-90.00; Medium 74.00-82.00; Culls 73.00 Down. Steers 600-850 lbs. Choice 70.00-76.00; Good 62.00-69.00; Medium 61.00 Down. Heifers (All Weights) Choice 80.00-84.00; Good 72.00-79.00; Medium 71.00 Down. Bulls Choice 68.00-71.00; Good 64.00-67.00; Medium 63.00 Down. Springing Heifers 1100.00. Pigs, Hd. \$2.00 to 4.00 higher. 20-30 lbs. 10.00-19.00; 40-60 lbs. 20.00-30.00. Shoats by Lb. to 32.00. Slaughter Hogs \$1.50 lower. 210-230 lbs. 38.00-40.00; 240-260 lbs. 39.00-40.25; 180-205 lbs. 29.00-37.50.

2-3 Holsteins 1112-1325 lbs. 63.00-63.50.

Average of LS-214 detailed quotations for Choice 900-1100 lb. steers this week 68.72; Choice 1100-1300 lbs. 68.91. Average weight steers for two days this week 1193 lbs. As compared 1166 lbs. last week. Average weight heifers for two days this week 998 lbs. as compared 1007 lbs. last week.

**HEIFERS:** Load Choice and Prime 3-4 1050 lbs. and load Choice 3 1000 lbs. 68.50. Several loads and part loads Choice and Prime 3-4 975-1025 lbs. 68.00-68.25. Choice 2-4 900-1075 lbs. Closed 66.00-68.00. Mixed Good and Choice 2-3 850-1025 lbs. 65.50-67.00. Good 2-3 60.50-64.50.

**COWS:** Utility and Commercial 2-4 47.00-50.00. Cutter 44.50-48.00. Canner and low Cutter 42.00-45.00.

**BULLS:** 1-2 1400-2100 lbs. 54.00-60.00, individual 1 61.00-62.50.

## Omaha Cattle

December 27, 1979

Closing prices on slaughter steers mostly 1.00 higher, some midweek sales 1.25-1.50 up. Heifers 1.00-1.25 higher. Cows 1.00-1.50 higher and bulls firm.

Three day receipts 7,600; compared 17,300 for four days last week; and 11,300 a year ago.

Trading was generally active on a curtailed supply of slaughter cattle sandwiched around the Christmas holiday. Prices advanced rather sharply early as some interests were in need of cattle for immediate requirements, and the upturn in live prices was supported by an upward spiraling carcass trade. Slaughter under federal inspection was substantially reduced as many plants observed a non-slaughter holiday on Monday as well as on Christmas. The overall finish was attractive with a liberal percentage Choice and a moderate volume Choice and Prime. Best buyer interest still centered on consignments Choice predominantly 3. Slaughter steers made up approximately 56 pct and heifers 26 pct. Cows comprised 15 pct.

**STEERS:** At midweek, load Choice 3 1197 lbs. 70.50, highest locally since June. Several loads Choice and Prime 3-4 and Choice 3 1150-1225 lbs. 69.50-70.00, Load sizable percentage 4 1200 lbs. 69.10. Choice 2-4 1000-1275 lbs. Closed 68.00-69.50. Mixed Good and Choice 2-3 1000-1250 lbs. 67.00-68.25. Good 2-3 64.00-66.50. Good and Choice

## Leesport Auction

December 26, 1979

**CATTLE 206.** Choice 1100-1350 lbs. slaughter steers 68.00-72.00, Good & Choice 66.00-69.00, Good 64.00-67.50, Standard 61.00-65.00, Utility 60.00-63.00. Choice 900 lbs. slaughter heifers 62.00-67.50, Good 58.00-62.00, Standard 54.00-58.00, Utility 47.50-54.00. Utility & Commercial slaughter cows 54.00-57.50, Commercial 52.00-54.50, Cutters 48.50-52.00, Canner & Low Cutter 45.00-50.00, Shells down to 38.00. Choice slaughter bullocks 68.00-74.85, Good 64.00-68.00, Standard 62.00-64.00, Utility 55.00-62.00. Choice 350-750 lbs. feeder steers 58.00-81.00; Good 350-700 lbs. feeder heifers 52.00-70.00.

**CALVES 153.** Supply included 25% farm calves. Prime vealers 110.00-123.00, Choice 95.00-110.00, Good 85.00-95.00, Standard & Good 110-130 lbs. 95.00-110.00, 90-110 lbs. 95.00-110.00, 70-90 lbs. 70.00-90.00, Utility 50-100 lbs. 40.00-70.00. Farm calves, holstein bulls 100-120 lbs. 110.00-125.00; holstein heifers 90-110 lbs. 100.00-135.00.

**HOGS 483.** Barrows & gilts \$2 to \$2.50 higher. US No. 1-2 200-240 lbs. barrows & gilts 42.40-43.85, No. 1-3 180-200

lbs. 41.00-42.50, No. 2-3 240-280 lbs. 39.00-42.00, No. 2-3 280-300 lbs. 30.00-38.00, No. 1-3 160-180 lbs. 35.00-38.00. US No. 1-3 280-350 lbs. sows 28.00-33.00, No. 2-3 350-550 lbs. 26.50-30.00. Boars 24.00-27.50; light weights 25.00-30.00.

**FEEDER PIGS 262.** US No. 1-3 15-30 lbs. 35.00-45.00 cwt., No. 1-3 20-40 lbs. 40.00-60.00, No. 1-3 40-60 lbs. 50.00-61.50, No. 1-3 60-80 lbs. 40.00-52.50 cwt., few Utility 25.00-40.00 per head.

**SHEEP 46.** Choice 60-100 lbs. wooled slaughter lambs 60.00-80.00, Good 45.00-60.00, Utility 45.00-55.00. Slaughter ewes 12.00-25.00.

## Belknap Auction

Dayton, Pa.

December 26, 1979

**CATTLE 100.** Compared with last Wednesday's market, slaughter cows steady. Few Good slaughter steers 61.50-63.25, few Standard 56.00-62.00. Few Choice slaughter heifers 60.25-64.25, few Good at 59.00. Utility & Commercial cows 55.00-59.75, few Commercial No. 4-5 50.00-55.00, Cutters 51.00-56.25, Canner & Low Cutter 44.00-51.00. Few Standard slaughter bullocks 48.00-55.25. Few Yield Grade #1-2 1070-1560 lbs. slaughter bulls 57.00-67.25. Few Medium Frame #1 400-670 lbs. feeder steers 58.00-69.00; few large Frame #1 700-850 lbs. 60.00-63.50; few Medium Frame #1 feeder heifers 350-540 lbs. 55.00-67.50.

**CALVES 732.** Standard & Good 90-110 lbs. vealers 60.00-69.00, 65-85 lbs. 50.00-60.00, Utility 50-80 lbs. 25.00-50.00. Farm calves, holstein bulls 95-135 lbs. 78.00-110.00; few holstein heifers 100-135 lbs. 85.00-107.00.

**HOGS 232.** Barrows & gilts \$2 to \$3 higher. US No. 1-2 210-235 lbs. barrows & gilts 43.75-44.60, No. 1-3 200-240 lbs. 41.75-43.50, No. 2-3 200-250 lbs. 40.75-42.00. Sows \$1 to \$2 higher. US No. 1-3 275-630 lbs. sows 31.00-36.00. Boars 22.50-34.50.

**FEEDER PIGS 249.** US No. 1-3 15-25 lbs. feeder pigs 6.00-14.00 per head, No. 1-3 25-35 lbs. 13.00-17.50, No. 1-3 35-50 lbs. 16.00-27.00 per head.

**SHEEP 3.** Not enough of any one grade to establish a market.

## Belleville Auction

December 26, 1979

**CATTLE 121.** Few High Good to Low Choice slaughter steers 65.85-67.00. Utility & Commercial slaughter cows 50.75-56.00, few to 58.60, Cutters 52.50-

55.50, Canner & Low Cutter 48.50-52.50, Shells down to 43.00. Few Yield Grade #1 980-1400 lbs. slaughter bulls 58.85-62.60.

**CALVES 240.** Few Choice vealers 94.00-105.00, few Good 80.00-90.00, Standard & Good 70-105 lbs. 67.00-74.00, Utility 50-100 lbs. 50.00-65.00. Farm calves, holstein bulls 90-125 lbs. 75.00-132.00; holstein heifers 90-115 lbs. 81.00-122.00.

**HOGS 334.** US No. 1-2 200-240 lbs. barrows & gilts 42.00-43.70, No. 1-3 200-250 lbs. 40.50-42.00. US No. 1-3 300-550 lbs. sows 29.00-35.00. Boars 21.00-29.00.

**FEEDER PIGS 332.** US No. 1-3 20-35 lbs. feeder pigs 16.50-21.00 per head, No. 1-3 35-50 lbs. 18.00-27.50, No. 1-3 75-125 lbs. 30.00-45.50 per head.

**SHEEP 16.** Few Good 80-100 lbs. wooled slaughter lambs 66.00-67.50. Few Slaughter ewes 27.00-38.00.

## Indiana

December 27, 1979

**CATTLE 74.** Few sl. steers Choice YG 60.00-63.50. Utility & Commercial sl. cows 55.00-61.00, Cutters 51.50-56.50, Canner & L. Cutter 43.00-51.50, Shells down to 35.00. Couple Yield Grade #2, 60.00-62.50.

**FEEDER CATTLE:** Few med. frame No. 1 Choice 360-540 lbs. steers 65.00-76.00. Few med. frame No. 1 Good 380-520 lbs. heifers 60.00-67.00.

**CALVES 115.** Vealers, few Choice 103.00-108.00. Good 90.00-105.00, Standard & Good 90-120 lbs. 70.00-90.00 65-85 lbs. 55.00-70.00 70-90 lbs., few Utility 50-85 lbs. 40.00-55.00. Hol. Bulls 95-135 lbs. 90.00-115.00.

**HOGS 94.** US No. 1-2 210-240 lbs. barrows & gilts 43.00-44.00, No. 1-3 200-250 lbs. 42.00-43.00. Few No. 2-3 195-260 lbs. 40.00-42.00. US No. 1-3 300-590 lbs. sows 28.00-32.50.

**FEEDER PIGS 16.** Few US No. 1-3 30-35 lbs. feeder pigs 15.00-17.00 per head.

**SHEEP 8.** 1 small lot Choice 90 lbs. 66.00, 1 small lot Slaughter ewes 23.50.

## Lancaster Feeder Cattle

Fri., December 21, 1979

Feeder Cattle  
 Today 452  
 Last Friday 1043  
 Auction not covered.

## Pa. Auction Summary

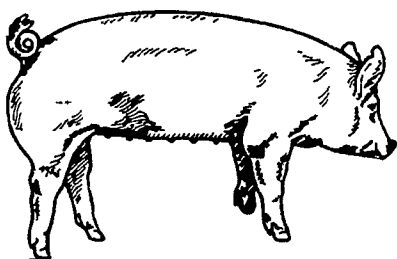
No summary computed due to Christmas holiday.

## VINTAGE SALES STABLES, INC.

### HAY, STRAW & GRAIN SALE

Every Thursday at 12:30 P.M.  
 Located 10 miles East of Lancaster on Rt. 30.

We Need Consignors & Buyers  
 Phone - 717-442-4181  
 Home Phone - 215-458-5060  
 L. Robert Frame - Mgr.



## PENN PACKING BUYING STATION

At Green Dragon Market.  
 1 mile north of Ephrata  
 on North State St.

WILL BE OPEN,  
 MON., DEC. 31 &  
 WED., JAN. 2  
 CLOSED  
 NEW YEAR'S DAY

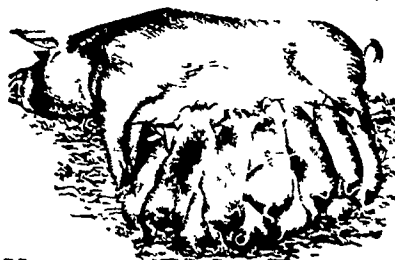
KNOW WHAT YOU ARE GOING TO GET FOR YOUR HOGS BEFORE THEY LEAVE YOUR FARM.  
 SAVE YOUR SELLING COST!

CALL FOR MARKET QUOTES  
 717-733-9648

## NEW HOLLAND SALES STABLES, Inc.

12 Miles East of Lancaster  
 on Route 23, New Holland, Penna.

WEEKLY  
 FEEDER PIG  
 SALE  
 EVERY  
 WEDNESDAY



Sale to Start at 1 P.M.

We Will Receive Your Pigs Anytime  
 From 7 A.M. Wed. Morning

State Graded Until 12 Noon.  
 All pigs inspected by State Approved Veterinarian.  
 State tags available at our office for you to tag pigs at home to save 25 cents tagging charge.  
 Tags delivered if you call 717-354-4341 our office in advance.

Calf Sale To Be Held  
 Every Thursday At 4:30 P.M.

NORMAN KOLB ABE DIFFENBACH  
 717-397-5538 717-393-4464