

Hay Markets

Good's Hay

Leola, Pa.

Wednesday, December 19
A total of 65 loads were moved. Sale will run this week as usual. All prices per ton unless otherwise noted.

16 loads mixed hay 73.00-80.00; 13 loads alfalfa 65.00-85.00, one load at 103.00; 3 loads corn 79.00-92.00; 11 loads straw 56.00-72.00; 2 loads corn fodder 37.00-38.00; 6 loads timothy 72.00-78.00; 1 load broomgrass at 54.00.

New Holland Hay

New Holland Sales Stables

Monday, December 17
115 loads moved. No Monday sale this week. Next week, business as usual. There will be a hog sale Monday. Wednesday sales as usual. All prices per ton unless otherwise noted.

Alfalfa 64.00-110.00; timothy 47.00-71.00; mixed 40.00-92.00; straw 43.00-100.00; corn 83.00-90.00.

Vintage Hay

Clover and Timothy hay 57-81; meadow grass 47; alfalfa 58; and corn fodder 40.

Regional Hay

December 17, 1979

(All hay No. 2 and better, prices paid by dealers at the farm and per ton.)

Hay and straw steady to strong.

Alfalfa 60.00-70.00; Mixed hay 40.00-60.00; Timothy hay 40.00-50.00; Straw 40.00-55.00; Mulch 20.00-25.00.

Green Dragon

Ephrata, Pa.

December 14, 1979

56 Loads Hay and 25 Loads Straw.

Alfalfa 69.00-99.00, individual 112.00; Mixed Hay 41.00-112.00, mostly 45.00-75.00; Timothy hay, few 42.00-67.00; Clover, few 50.00-75.00; Straw 44.00-58.00; Ear Corn, 8 loads 73.00-90.00, individual 98; Corn Fodder, 6 loads 35.00-50.00.

Central U.S. Carlot

December 19, 1979

Compared to Tuesday's 4:30 report: steer beef steady but hardly no test on packer to processor; chain stores showing light to moderate pre-holiday interest. Choice 4 heifer beef steady, otherwise no test. Most processors have this week's needs on hand and are bearish on next week deliveries, however, late interest improving at steady levels. Packers holding firm and showing limited offerings. Sales reported on 46 loads of steer and heifer beef.

STEER BEEF

6 Loads

FOB Omaha Basis

Packer to processor: Choice 3 600-900 lbs. 106.25, including packer to packer, steady.

Choice 4 600-900 lbs. 96.25, steady.

Good 2-3 600-900 lbs. 96.25, (hols. type).

Packer to chain store account:

Choice 3 600-800 lbs. 106.25, no trim or slct.

Choice 3 500-700 lbs. 108.00, trmd. & slctd.

Choice 2 500-700 lbs. 109.00, trmd. & slctd.

FOB Amarillo Basis

Packer to chain store account:

Good 2-3 500-700 lbs. 101.50-102.50, selected.

HEIFER BEEF

10 Loads

FOB Omaha Basis

Packer to processor: Choice 3 500-700 lbs. 105.25, steady.

Choice 4 500-700 lbs. 95.25 early, steady.

Good 2-3 500-700 lbs. 97.00.

PRIMAL BEEF CUTS

4 Loads

FOB Omaha Basis

Choice 3 HINDS (H) 130-210 lbs. chain store acct. & selection 118.25.

FULL PLATES: processor acct. 58.75.

BEEF TRIMMINGS AND BONELESS PROCESSING BEEF

BEEF

11 Loads

FOB Omaha Basis

50 pct chem lean fresh 55.50-57.50, combos.

50 pct chem lean fresh 59.50, boxed.

50 pct chem lean frozen 58.50-59.00, boxed.

75 pct chem lean fresh 112.50, boxed.

Compared to Tuesday's 2:15 report: fresh pork loins unevenly steady except 14-17 lbs. for next week shipment 6.00 higher. Picnics 2.25-4.25 higher. Fresh hams steady-1.00 lower. Sdls bellies 10-12 lbs. steady. Trimmings and boneless picnics steady-2.00 higher. Trading slow; demand light. Sales reported on 44 loads and 7½ loads of trimmings.

FRESH PORK CUTS

LOINS: 14-17 lbs. 76.25-82.00 immediate, unevenly steady; 14-17 lbs. 86.00 next week, 6.00 higher; 14-17 lbs. 89.50, trimmed; 14-17 lbs. 87.00-90.50, clear channel; 17-20 lbs. 70.25-72.00, steady.

PICNICS: 4-8 lbs. 48.25-50.25, 2.25-4.25 higher; 8 & up lbs. 48.25.

SPARERIBS: 83.00, steady.

SKINNED HAMS: 14-17 lbs. 69.00-70.00, steady-1.00 lower; 17-20 lbs. 65.50-68.00, late 65.50, steady.

BELLIES, SDLS: 10-12 lbs. 30.00, steady; 14-16 lbs. 40.00-41.50.

BNLS CT BUTT: 1½-4½ 94.50.

PORK TRIMMINGS BONELESS PROCESSING FORK

(Chemical Lean)

42 pct lean trmgs fresh 27.00, steady; 72 pct bnls pics fresh 73.00-74.00, 1.00-2.00 higher; 86 pct shank meat frzn 71.50.

Lancaster Feeder Cattle

Lancaster, Pa.

Fri., December 14, 1979

Today 1043

Last Friday 837

Last Year 843

TREND: Compared to last Friday, feeder steers firm to 1.00 higher, insufficient volume feeder heifers for a market trend. Supply included 450 in graded sale sold in lots of 10 or more; balance sold mainly in lots of three or less.

FEEDER STEERS

MEDIUM FRAME NUMBER 1: One lot 400 lbs. 89.25, couple lots 630 lbs. 78.00-79.10.

LARGE FRAME NUMBER 1: 940-1040 lbs. 71.25-72.25; one lot 625 lbs. 79.50.

MEDIUM AND LARGE FRAME NUMBER 1: One lot 515 lbs. 620-730 lbs. 78.00-81.00; 825-1010 lbs. 72.00-74.00.

SMALL AND MEDIUM FRAME NUMBER 1: One lot 490 lbs. 80.75.

MEDIUM FRAME NUMBER 1 AND 2: 410-570 lbs. 76.75-81.50; couple lots 650 lbs. 73.10; couple lots 710-780 lbs. 73.25.

LARGE FRAME NUMBER 1 AND 2: 890-940 lbs. 68.10-71.50.

LARGE FRAME NUMBER 2: Couple lots 1055-1105 lbs. Holsteins 60.50-62.75.

FEEDER HEIFERS MEDIUM FRAME NUMBER 1: One lot 485 lbs. 72.50; one lot 440 lbs. 61.00.

MEDIUM FRAME NUMBER 1 AND 2: One lot 325 lbs. 59.75.

Four States Livestock

Wed., December 12, 1979

SLAUGHTER: Fed Steers very active, \$1.00 higher. Choice 66.00-68.75; Good 62.00-65.00; Medium 61.00 Down. Heifers Choice 63.00-64.25; Good 57.00-62.00; Medium 56.00 Down. Cows good run, active and \$3.00 higher. High Yield 53.00-55.00; Average 49.00-52.00; Big Middle 44.00-48.00; Shelly 46.00 Down. Fat Bulls \$3.00 higher. Good 61.00-64.25; Medium 55.00-60.00. Veal Calves \$1.00 to \$4.00 higher. Choice 108.00-116.00; Good 100.00-107.00; Medium 85.00-99.00; Farm Hfrs. to 167.50; Farm Bulls to 120.00; Light & Weak to 72.00 Down. Lambs very active, \$5.00 higher. Choice 65.00-68.50; Good 61.00-64.00; Medium 60.00 Down.

STOCKER: Steers 300-550

Land use for crops, pasture, and forests totals 1,811 million acres — 80 percent of the total U.S. land area of 2,264 million acres.

lbs. strong demand, \$4.00 higher. Choice 92.00-98.00; Good 84.00-91.00; Medium 78.00-83.00; Culls 77.00 Down. Steers 660-850 lbs. Choice 72.00-80.00; Good 65.00-71.00; Medium 64.00 Down. Heifers (All Weights). Dairy Type to 100.00; Choice 65.00-68.50; Good 57.00-64.00; Medium 56.00 Down. Bulls Choice 78.00-82.00; Good 71.00-77.00;

Medium 70.00 Down. Dairy Cows to 1225.00. Springing Heifers to 1300.00. Pigs, Hd. mostly steady. 20-30 lbs 8 00-15.00; 40-60 lbs. 16.00-23.50. Shoats by Lb. to 29.25. Slaughter Hogs \$2.00 higher. 210-230 lbs. 41.25-42.00; 240-260 lbs. 40.75-41.50; 180-205 lbs. 37.00-41.25. Sows 300-550 lbs. 30.00-40.00; Thin Sows 21.00-29.00.

L & M FUR & WOOLEN ENTERPRISE



Quality Electrified Sheepskins & Furs Tannery Direct Dist - Wholesale & Retail Check Our Quality, Price & Services! Mail & Phone Orders Accepted

- Woolen Hosp Pads Natural & All Colors
- Pa Largest Selection of Woollen Products
- Sheepskin Coats at Reasonable Prices
- See Us At Meadowbrook Market in Leola

Dealers Wanted

117 W Summit St., Mohnton, PA 215-777-2465

Hours Mon Fri 9-8 30, Sat 9-5 Wed 9-4 30, Sat 9-5

SPECIAL NOTICE VINTAGE SALES STABLES, INC.

Will have all regular sales except will be CLOSED CHRISTMAS

Merry Christmas

From all of us at Vintage Sales Stables, Inc.

L. Robert & Elaine Frame

CHRISTMAS

At this time of year when our minds are especially occupied with the thoughts of gifts, may we take time to realize that we have the greatest gift of all to share with the world, the message of Life, Peace and Joy, available to all through our Lord Jesus Christ

B & R CATTLE CO.

John Bowman Ron Ranck

RD 1, Marietta, PA

Office Phone: (717) 653-8164

MERRY CHRISTMAS

Filled with a happy holiday glow knowing we have so many good friends! Thanks all!

GREEN DRAGON LIVESTOCK SALES

CURIOUS RED?

SUBSCRIBE TO

"The Red Bloodlines"

Monthly publication featuring Red sires, Red & White Breeders, Shows & Sales and much more.

12 Issues Only \$3.00

ORDER A

Sire Directory

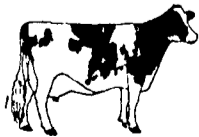
Featuring 49 Red sires with pictures, proofs and pedigrees. Valuable guide in sire selection.

Cost \$1.00



"BRIGHTEN YOUR FUTURE" Red & White Dairy Cattle Association

Box 63L, Crystal Spring, PA 15536 Phone: 814-735-4221



2-9FP

SUPER DOL

THE AMAZING "TIME RELEASE" BUFFER CONTAINING MAGNESIUM FOR RUMINANTS

CALL OR WRITE: **wmb** CORPORATION

960 E. GREEN ST., PASADENA, CA. 91106 • (213) 449-1667
5360 MERLE HAY RD., DES MOINES, IA. 50323 • (515) 282-5415
1.41 FIELDCREST AVE. EDISON, N.J. 08817 • (201) 387-2082