

Lancaster Co. DHIA

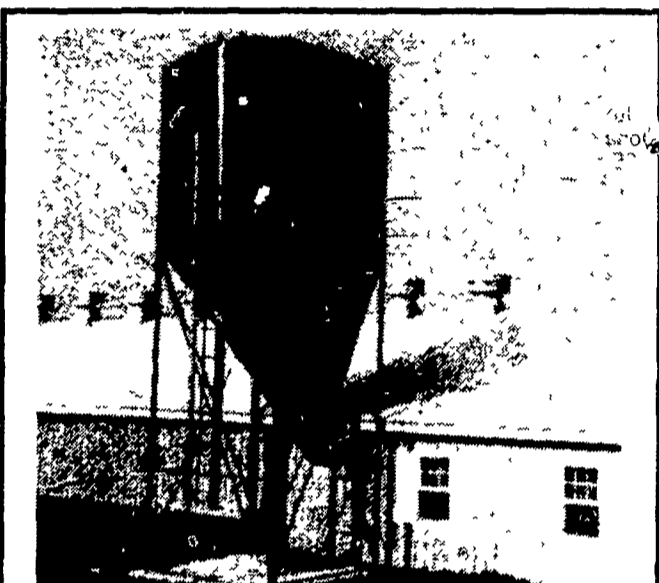
(Continued from Page 117)

Jay L. Ranck	RH	6-3	305	25,825	3.3	859
Taffy Meadow View Farm						
Hazel	RH	4-3	300	22,819	3.8	859
Dawn	RH	5-4	305	19,216	4.1	794
Dancer	RH	3-5	305	22,733	3.4	762
Audrey	RH	8-8	305	22,775	3.2	739
Prince	RH	3-11	283	18,292	3.9	705
Shellenber Bros.						
Sue	RH	8-1	305	23,976	3.6	856
Binnie	RH	6-8	305	23,850	3.6	854
Darla	RH	5-2	305	26,581	3.0	807
Minie	RH	9-0	305	19,019	3.9	751
Leone	RH	6-6	305	23,483	3.2	742
Holly	RH	10-10	305	19,852	3.6	705
Lacy	RH	8-6	301	21,996	3.2	704
Carl L. M...						
Nola	RH	5-1	305	20,901	4.1	854
Panda	RH	3-9	305	20,227	4.1	821
Lucia	RH	9-3	305	20,643	3.6	752
Skylark	RH	3-2	305	18,284	4.0	731
Dotmae	RH	3-2	305	18,395	3.9	710
Earl Smoker						
Patsy	RH	4-4	276	19,358	4.4	853
Aaron B. Lantz						
Patsy	RH	7-2	305	20,874	4.1	852
Eugene Tristle						
74	GrH	7-1	305	18,984	4.5	848
Joseph Eshleman						
Crystal	GrH	8-2	305	22,442	3.8	844
Karl W Herr						
Patsy	R&W	9-5	305	22,388	3.8	844
Ella	R&W	6-4	305	26,956	3.1	842
Jan	R&W	4-4	305	20,422	3.6	738
Robert F. & Joan B Book						
Coleen	RH	5-3	305	22,486	3.7	842
Tiger	RH	5-2	305	25,341	3.1	774
David L. Landis						
Gerry	RH	7-6	305	22,946	3.7	840
Fran	GrH	4-3	305	21,526	3.5	756
Quarryville Presbyterian Home & David Weaver						
219	GrH	5-9	305	21,044	4.0	840
Benuel S Stoltzfus						
Juliet	RH	4-2	305	20,917	4.0	836
Marvin S Nolt						
136	GrH	6-10	305	23,731	3.5	835
Richard N Sauder						
Jane	RH	4-0	305	22,685	3.7	835
Samuel M Martin Jr						
Lou	GrH	6-3	305	21,870	3.8	832
James C Weicksel						
Marine	RH	4-4	305	22,791	3.6	831
Christian Zook						
Sharon	RH	3-1	282	19,436	4.3	831
Vera	RH	6-4	295	22,562	3.6	807
Emma	RH	6-7	267	22,808	3.5	804
Lucky	RH	3-2	277	17,438	4.3	750
Nelson R Habecker						
42	GrH	6-2	305	22,870	3.6	830
Willis M Martin						
Gem	RH	6-3	305	20,381	4.1	826

Gladys	RH					
John F Petersheim						
25	RH	9-3	305	20,045	4.1	826
49	RH	6-10	305	19,351	4.2	808
Long Acres Farm						
53B	GrH	5-2	303	21,766	3.8	825
63	RH	5-4	279	20,332	3.6	739
84	GrH	3-7	305	17,336	4.1	703
J Richard Boll						
173	GrH	5-1	305	23,588	3.5	824
Aaron K Stoltzfus						
Florence	RH	7-2	305	20,322	4.1	824
Donna	RH	5-3	305	21,095	3.6	756
Allan R. Shoemaker						
Boots 2	RH	3-1	305	19,367	4.2	822
Maude	RH	5-1	305	21,606	3.4	744
Bonnie	RH	5-4	305	21,485	3.4	729
Boots	RH	6-0	305	18,861	3.7	702
Robert H Rohrer & Sons						
117	GrH	5-1	301	20,680	4.0	819
116	GrH	6-1	305	21,088	3.7	790
66	GrH	7-1	305	19,345	3.9	745
65	GrH	3-2	305	21,357	3.4	717
Robert W. Ulrich Jr						
311	RH	3-11	305	14,747	5.6	819
Stacy						
767						
Moses N. Good						
Sally	GrH	5-3	305	28,177	2.9	819
Jane	GrH	4-4	305	21,193	3.9	818
Aaggie	RH	7-0	305	19,838	3.7	725
Abram & John Barley						
28	RH	9-6	282	21,526	3.8	817
441	RH	5-2	297	24,674	3.1	761
404	RH	5-3	283	16,146	4.7	751
285	RH	3-4	234	17,594	4.0	711
J Robert Kindig						
Hester	RH	3-0	305	18,604	4.4	816
Maid	RH	3-5	305	19,302	4.1	784
Gerald Martin						
Beth	RH	4-9	305	23,470	3.5	813
Bonnie	RH	4-2	305	21,389	3.5	745
Melvin J Martin						
Vivian	RH	3-11	305	20,474	4.0	813
Colleen	RH	7-0	305	21,807	3.5	766
Paul N Brubaker						
120	RH	7-6	305	20,203	4.0	811
14	RH	5-3	305	23,828	3.1	750
Harry L Troop						
Doris	RH	6-2	305	22,533	3.6	810
Ephraim D Riehl Jr						
Ethel	GrH	4-2	305	21,040	3.8	810
Nelson W Nolt						
56	RH	8-2	305	18,725	4.3	810
J Wilmer Conrad						
Snowbal	RH	3-9	305	22,803	3.5	805
Chochoo	RH	8-3	305	21,690	3.6	773
D Lamar Weaver						
Rita	RH	3-5	305	18,986	4.2	805
John K Peters						
Alma	GrH	4-1	305	19,137	4.2	800
Parke H Ranck						
Pamela	RH	5-1	301	17,471	4.6	800
Virginia	RH	3-2	305	15,430	4.9	754
Albert E Fry						
Dixie	RH	7-1	305	16,998	4.7	800
Russell Adamire Jr						
3 Ins	RH	7-1	305	19,297	4.1	799

Jay C Garber						
37	RH	3-11	305	21,109	3.8	797
Harry H Ranck Jr						
Jane	RH	8-5	305	20,335	3.9	796
Lilly	RH	6-2	305	18,375	4.3	794
Bev	RH	4-0	305	19,178	3.9	755
Weidler Grube						
Beets	RH	5-5	305	21,175	3.8	795
Cora	RH	6-0	305	19,144	4.1	778
Bruce H Hershey						
Beverly	RH	5-6	305	21,216	3.7	794
Walnut Run Farm						
80	RH	4-3	305	20,965	3.8	793
203	GrH	5-4	305	20,284	3.9	783
165 Kel	RH	6-2	305	20,203	3.7	748
193	GrH	5-2	295	18,980	3.7	705
Earl R. Hursh						
Abbey	RH	5-5	305	24,501	3.2	791
Manda	RH	7-2	295	18,982	4.1	773
Maud	GrH	3-2	305	19,629	3.7	728
Mitzie	RH	5-2	305	22,367	3.2	722
J Wade Groff						
Joy	RH	6-5	305	17,531	4.5	791
Willis S Nolt						
59	RH	7-2	305	23,798	3.3	790
James D. Shertzer						
Fury	RH	3-4	305	16,140	4.9	790
J Earl Horst						
Ideal	RH	5-0	302	22,585	3.5	789
Rosey	RH	3-9	305	20,482	3.8	774
Hellen	RH	6-4	305	19,790	3.6	721
Lady	RH	3-10	305	21,316	3.4	718

(Turn to Page 119)



CUSTOM MADE FEED BINS

- Made of 14 Gauge Steel
- Longer Taper for Easier Flow
- All welded seams which make it water proof and rodent proof
- Can be installed inside or outside building
- Most installations can be made without auger.

WILL DELIVER AND INSTALL ANYWHERE

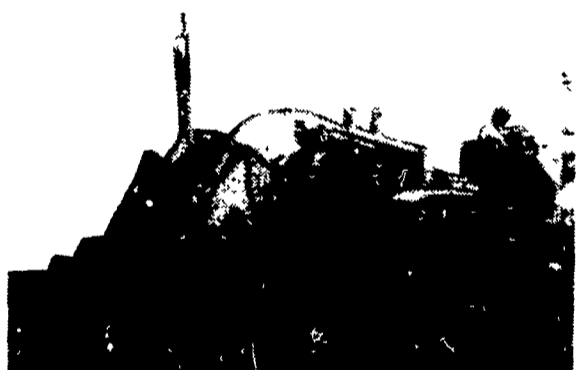
FOR FREE ESTIMATE CALL

STOLTZFUS WELDING

717-345-4854

We Sell, Service & Install
Bucket Elevators, Grain Augers, M-C Grain Dryers,
Distributors, Pipes & Accessories.

DRAINAGE PROBLEMS?



COCALICO EQUIPMENT HAS THE TWO MACHINES TO HANDLE YOUR DRAINAGE PROBLEMS.

★ Both Machines Equipped with Laser Beam Grade Control

Drainage Pays High Returns

Investment	Typical Annual Return
Land Drainage	21-46%
Farm Buildings	3-23%
Farm Land	11%
Stocks	7.4%
Bonds	6.1%

COMPARE

Even with the conservative figures shown here, it's obvious that land drainage should top farmers' lists of investment priorities.

★ We Stock Heavy Grade Tubing which Exceeds SCS Specifications. In sizes 4", 6", 8", 10" and 12".

★ Also Pipe And Fittings For Tile Outlet Terraces.



COCALICO EQUIPMENT CO.

DRAINAGE & EXCAVATING

RD #3, DENVER, PA 17517

PH: 215-267-3808

IF YOU CAN FIND AN ENGINE THAT USES LESS FUEL THAN A DEUTZ, BUY IT.



Air-cooling lets a Deutz engine warm up faster and operate at a more efficient combustion temperature. There are less exhaust emissions and more power on less fuel! Users report savings of 20 to 40% over water-cooled diesels. And 100% direct air-cooling eliminates the major source of down time — the water-cooling system. No radiator. No water pump. No hoses. No cavitation. No freeze ups. Deutz air cooled diesels — 5 to 500 bhp.



- We stock rebuilt: starters, generators, injectors, for Deutz
- We have complete road service since 1955
- We supply free application engineering
- We have facilities for any mechanical fabrication required to apply new Deutz diesels.

Stauffer Diesel Inc.

312 W. Main St. New Holland, PA
Ph: 717-354-4181
Retail, Wholesale & O.E.M. Sales