

## New Holland Dairy

New Holland, Pa.  
 Wednesday, December 12  
 Reported receipts of 93 cows, 53 heifers, and 4 bulls. Market steady with last week's market.  
 Load of Pa. fresh cows, 1335.00-1750.00, Load of Pa. fresh cows, 1000.00-1300.00; Load of N.Y. fresh cows, 1375.00-1700.00, springers 1300.00-1900.00; 36 Load of all stages cows, 470.00-1175.00. Locally consigned cows, 650.00-1425.00; Springing heifers, 850.00-1325.00; Open heifers, 260.00-660.00; Graded bulls, 350.00-530.00.

## Western Maryland Auction

December 11, 1979  
**BUTCHER CATTLE:** Fat Steers Good & Low Choice \$63.00-67.00, Standard 58.00-63.00, Heifers, Top Choice 64.00-67.50, Cows Large Run, Active! 3.00-4.00 higher! Good Cows, 53.00-55.00 Few to 57.50, Standard & Utility 49.00-53.00, Cannors 46.00-49.00, Shelly 47.00 Down, Bulls Few Offered Medium to 56.50.  
**BUTCHER HOGS:** Good run 1.00 higher! Top Hogs 40.85, Bulk 200-225 lbs. 40.25-40.60, 230-260 lbs. 38.25-39.75, 170-190 lbs. 34.50-35.50, 300-400 lbs. 33.00-35.50, Sows 300-600 lbs. 27.50-35.00, 200-300

lbs. 22.00-28.50, Boars 400-650 lbs. 22.75-23.85.  
**VEAL CALVES:** Mostly light calves offered, Standard 90.00-100.00, Light Calves 70.00-78.00, Weak & Rough 70.00 Down.  
**CALVES RETURNED TO FARM:** Holstein Heifers 85-110 lb. 95.00-145.00, Holstein Bulls 90-115 lbs. 78.00-85.00.  
**STOCK CATTLE:** Large Run! Prices steady, Stock Steers 300-600 lb. 65.00-85.00, 600-800 lb. 60.00-72.00, Stock Heifers 350-500 lb. 65.00-75.00, Holsteins 350-600 lb. 80.00-90.00, Stock Bulls 300-500 lb. 60.00-77.00.  
**PIGS AND SHOATS:** Large Run! Mostly steady prices, by the head 15-30 lb. 10.00-20.00, 30-50 lb. 18.00-

26.00, by the lb. 100-130 lb. 28.00-35.00, Stock Boars by the lb. 200-300 lb. 22.00-26.00.

## Belleville Auction

December 12, 1979  
 Market reported cows & hogs higher.  
**DAIRY COWS:** 400.00-1580.00 per head.  
**STEERS:** Good to Choice 57.00-64.75; Standard to Good 53.35-57.50.  
**FEEDERSTEERS:** Standard to Good a few 58.00-83.50.  
**HORSES:** 305.00-650.00 per head.  
**BULLS:** 50.35-64.75.  
**COWS:** Utility & Commercial 51.50-53.75, a couple 55.50; Utility 47.50-51.00; Cutters Down to 42.00.  
**CALVES:** High to Choice 110.00-123.00; Good to Choice 98.00-110.00; Standard to Good 30.00-82.00; Holstein Bulls 120.00-142.00, a couple 150.00.  
**HOGS:** 35.50-44.75.  
**FEEDER PIGS:** 15-25 lbs. 9.50-12.50 per head, 25-40 lbs. 13.00-31.50 per head.  
**SOWS:** 25.50-36.25.  
**BOARS:** 19.25-22.00.  
**LAMBS:** 59.00-64.00.  
**SHEEP:** Ewes 22.00-32.50.

## Pa. Auction Summary

December 14, 1979

14 Auctions  
**CATTLE** 4863 head, compared with 5383 head last week, and 4731 head a year ago. Compared with last week's market, slaughter steers & bulls steady to \$1.00 higher. Sl. heifers steady to 2.00 higher. Sl. cows \$1.00-4.00 higher, most advance latter part of week; few High Choice & Prime YG, sl. steers 71.00-73.00; Choice YG 66.00-73.00; Good 61.00-67.50; Standard 56.00-63.00. Choice YG, sl. heifers 61.00-67.00; Good 57.00-65.00; few Standard 52.00-60.00. Utility & Commercial sl. cows 46.50-56.00, Cutters 44.00-52.00; Canner & L. Cutter 39.00-48.00, Shells down to 31.00. Few Choice sl. bullocks 66.00-71.00, few Good 60.00-66.00. Yield Grade #1, 1100-2000 lbs. 59.00-68.00, few Yield Grade #2, 800-1700 lbs. 50.00-61.00.  
**FEEDER CATTLE:** Med. Frame No. 1 400-700 lbs. steers 65.00-78.00, few to 86.00; 800-1050 lbs., few Large Frame No. 2 54.25-61.50, Med. No. 1 400-700 lbs., 58.00-70.00.  
**CALVES** 3659 head, compared with 3950 head last week, and 3648 head a year ago. Vealers grading choice & prime 2.00-3.00 higher. Standard and Good

steady to 5.00 lower. Prime vealers 117.00-128.00, Choice 100.00-117.00, Good 80.00-100.00. Standard & Good 90-110 lbs. 65.00-85.00, 70-90 lbs. 55.00-75.00.

**FARM CALVES:** Hol. Bulls 90-125 lbs. 90.00-135.00. Hol. Heifers 90-135 lbs. 95.00-172.50.

**HOGS** 7471 head compared with 8260 head last week, and 6411 head a year ago. Barrows and gilts 50 cents to 1.25 higher. US No. 1-2 200-240 lbs. barrows & gilts 43.00-44.50, few down to 42.00, No. 1-3 195-250 lbs. 41.00-43.50, few No. 2-3 190-270 lbs. 38.00-42.00, few No. 1-3 140-180 lbs. 33.00-41.00. **SOWS** steady to 2.00 higher. US No. 1-3 300-600 lbs. sows 27.00-35.00, No. 2-3 400-700 lbs. 22.00-29.00. **BOARS** 21.00-30.00.

**FEEDER PIGS** 1665 head, compared with 3010 head last week, and 1626 head a year ago. US No. 1-3 20-35 lbs. feeder pigs 8.00-16.50 per head, No. 1-3 35-50 lbs. 15.00-27.00, few Utility 10-40 lbs. 5.00-15.00 per head.

**GRADED FEEDER PIGS** 4082. **ALL SALES CWT.** Compared with 3013 head last week, and 2381 head a year ago. Feeder pigs 1.00 to 8.00 higher. US No. 1-2 25-40 lbs. 60.00-84.00 few down to 50.00, 40-50 lbs. 55.00-75.00, 50-60 lbs. 50.00-69.00; 60-80 lbs. 44.00-58.00. US. No. 2-3 30-40 lbs. 60.00-82.00, 40-60 lbs. 42.00-63.00, 60-95 lbs. 35.00-46.00.

**SHEEP** 430 head, compared with 631 head last week, and 399 head a year ago. Woolled sl. lambs 1.00-3.00 higher, Choice 65-110 lbs. 66.00-72.00, Good 50-90 lbs. 53.00-66.00. Slaughter ewes 12.00-30.00.



## NOTICE NOW BUYING

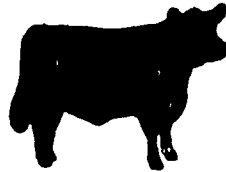


## WET EAR CORN OR SHELLED CORN DELIVERED TO THE DRYER

Farmers take advantage of our grain exchange program. We offer a limited amount of storage to be used only by customers wanting grain used in your feed.

Call us for our up-to-date prices or for any additional information.

**KEYSTONE MILLS**  
 R.D. #3, Ephrata, Pa. 17522  
 717-738-1088 or 717-354-4616



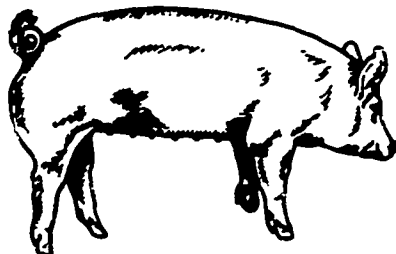
## PENN PACKING BUYING STATION

At Green Dragon Market.  
 1 mile north of Ephrata  
 on North State St.

**WILL BE OPEN,  
 DEC. 24 & 26  
 ALSO DEC. 31 & JAN. 2  
 CLOSED CHRISTMAS  
 and  
 NEW YEAR'S DAY**

**KNOW WHAT YOU ARE GOING TO GET FOR YOUR HOGS BEFORE THEY LEAVE YOUR FARM. SAVE YOUR SELLING COST!**

**CALL FOR MARKET QUOTES  
 717-733-9648**



**I'M NOT LION...**

**The Classified Livestock Section Has Beastly Selections!**

## LEESPORT MARKET & AUCTION, INC.

North end of Leesport Turn East off Route 61  
 "WHERE FRIENDS MEET"

**BERKS COUNTY'S ONLY WEEKLY CATTLE & SWINE AUCTION— WEDNESDAY AT 1 P.M.**



**FARMER'S MARKET Every Wednesday, 12 NOON TO 9 P.M.**



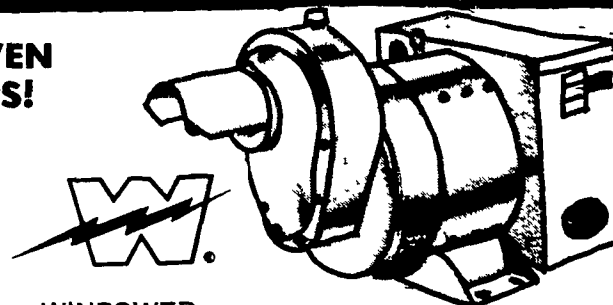
Garden Fresh Fruits & Vegetables - Bakery Fresh Cakes, Pies and Buns - Butcher Fresh Meats & Cheese - Sporting Goods - Clothing - Furniture - Jewelry - Used Items & Collectibles.

PHONE: 215-926-1307

LEROY WEIST & JOHN WEIST, MGRS.

## TRACTOR DRIVEN ALTERNATORS!

Protect your farm against costly power failure. Buy or lease a Winpower Alternator. PHONE OR WRITE



Please send me additional information  
 Name \_\_\_\_\_  
 Address \_\_\_\_\_  
 City \_\_\_\_\_ Zip \_\_\_\_\_  
 Phone \_\_\_\_\_

**WINPOWER CORPORATION**  
 Distributed by:

**JAY RICHWINE**  
 528 Hogestown Rd.  
 Mechanicsburg, PA 17236  
 717-766-4382

**MARVIN HORST**

1950 S. 5th Ave.  
 Lebanon, PA 17042  
 717-272-0871

**WAYNE OLVER**  
 Damascus, PA 18415  
 717-224-4169