

**Hay Markets****Green Dragon**

Ephrata, Pa.

November 30, 1979

Prices per ton:

52 loads hay and 19 loads straw.

Alfalfa 63.00-100.00, one 106.00, few down to 47.00; Mixed hay 45.00-79.00, few 99.00; Timothy hay, few 44.00-55.00; Clover, few 56.00-75.00; Straw 52.00-74.00; Ear Corn, 11 loads 68.00-77.00, one 96.00; Corn Fodder, one lot 60.00.

**Regional Hay**

December 3, 1979

(All hay No. 2 and better, prices paid by the dealer at the farm and per ton.)

Hay & Straw fully steady. Alfalfa 60.00-70.00; Mixed hay 40.00-60.00; Timothy hay 40.00-50.00; Straw 40.00-60.00; Mulch 15.00-25.00.

**Good's Hay**

Leola, Pa.

Wednesday, December 5

Total 99 loads. All prices per ton, unless otherwise noted.

Alfalfa 78-100; Mixed Hay 50-111; Straw 58-78; Corn Fodder 36-51; New Corn 74-83; Clover 78; Timothy 55-84.

**New Holland Hay**

New Holland Sales Stables

Monday, December 3

Total 90 loads. All prices per ton unless otherwise noted.

Alfalfa 53-116; Mixed Hay 40-90; Timothy 55-94; Straw 64-82; Corn 65-93.

**New Holland Horse**Monday, December 3  
New Holland Sales Stables

Reported receipts of 448 head of horses, mules, and ponies. Market steady than last week's market.

Local riding & driving saddlebred horses, 575-1175; better horses, 450-700; local driving horses, 275-1175; riding horses, 275-425; lightweight killers, 250-400; heavyweight killers, 450-575; mares, 25-65; colts, 10-30; geldings, 25-60; larger ponies, 100-200.

**Central US Carlot**

December 5, 1979

Compared to Tuesday's 4:30 report: Steer & heifer beef mostly steady. Demand and trading light with packers bullish, while most buyers continue to take a wait & see attitude. Most breakers have adequate inventories on hand in face of slow movement of cuts. Chain stores showing firm to moderate interest. Sales reported on 53 loads of steer and heifer beef.

**STEER BEEF**

27 Loads

FOB Omaha Basis

Choice 3 700-900 lbs. 104.50 pckr/pckr steady.

Choice 3 600-800 lbs. 103.25. Choice 3 500-700 lbs. 104.00-105.25 chain store slctd.

Choice 2 500-700 lbs. 104.50-106.25 chain store slctd.

Choice 4 600-900 lbs. 90.25 steady.

Good 2-3 600-900 lbs. 97.00. FOB Amarillo Basis

Choice 3 500-700 lbs. 102.25 including few steady pckr/pckr &amp; chain store account.

Choice 4 500-700 lbs. 90.25 steady.

Cow beef 50-2.00 lower.

**COW BEEF**

14 Loads

FOB Omaha Basis

Utility 450&amp;up lbs. 80.00 west 1.00 lower (Brkg)3-4.

Utility 400&amp;up lbs. 75.25 1.00-2.00 lower (Brkg)2-3 Chicago Area.

Canner&amp;Cutter 350&amp;up 90.25-93.00 Midwest.

FOB Amarillo Basis

Utility 450&amp;up lbs. 80.00-80.50 west .50-1.00 lower (Brkg)3-4.

Utility 400&amp;up lbs. 84.00 west 1.00 lower (Brkg)2-3.

PRIMAL BEEF CUTS

5 Loads

FOB Omaha Basis

HINDS (H) 120-170 lbs. 110.25-110.75.

FORES 130-210 lbs. 35.50 chain store slctd

ARM CHUCKS 75-120 lbs. 85.25.

BONELESS PROCESSING BEEF/TRIMMINGS

24 Loads

FOB Omaha Basis

50 pct chem lean fresh 58.25 steady.

Compared to Tuesday's 2:15 report: fresh pork loins 50-2.50 higher. Picnics orally steuv. Boston Butts 4-8 lbs. 1.50 higher. Skinned hams steady 1.50 lower. Sdls bellies 1.50-2.00 lower. Frozen 72 pct trmgs and fresh bnlcs steady 1.00 lower. Trade moderamk demand qugate-good. Sale reported on 149 loads and 15 loads of trimmings and frozen variety meats.

FRESH PORK CUTS

LOINS: 14/Dn lbs. 76.00; 14-17 lbs. 75.00-78.00 gml 50-2.50 higher; 14-17 lbs. 79 50-80.50

clear channel; 14-17 lbs. 83.50 special trim; 20&amp;up lbs. 52.25 steady.

BOSTON BUTTS: 4-8 lbs. 64.50, 1.50 higher.

PICNICS: 4-8 lbs. 48.00-48.50 grnly steady; 8&amp;up lbs. 46.25-46.75 grnly steady.

SKINNED HAMS: 14-17 lbs. 96.00 steady; 17-20 lbs. 83.00-88.00, late 88.00 late trade stdy; 20-26 lbs. 76.50-77.50, 1.50 lower; 26&amp;up lbs. 56.00-58.50 50-1.50 lower

BELLIES, SDLS: 10-12 lbs. 28.00-28.50; 12-14 lbs. 38.50-40.25, late 40.25 1.50 lower; 14-16 38.50-40.25, late 40.25 2.00 lower.

FROZEN VARIETY MEATS: Feet, toes on 13.00.

PORK TRIMMINGS/BONELESS PROCESSING PORK (chemical lean): 42 pct lean trmgs fresh 29.00-30.00; 72 pct lean trmgs fresh 63.00; 72 pct lean trmgs frzn 64.00 1.00 lower; 72 pct bnlcs fresh 69.50-70.00 grnly steady; Skinned jowls frozen 21.00.

**East Coast Carlot**

December 5, 1979

Compared to Tuesday's close: limited sales Prime special fed veal generally steady. Good and Choice boning veal generally steady. Lamb not enough sales reported to establish trends. Boneless beef 85 chem lean compared to last week's bulk 6.00-8.00 lower.

**VEAL CARCASS**

HIDE ON

Prime (Special fed) 180-240 lbs. ltd. 20000 generally steady.

**BONING TYPE**

Good &amp; Choice

Northeastern Suppliers 65-75 lbs. 10,800 few 11100 all generally steady; 55-64 lbs. 10600, few 10900; 45-54 lbs. 10400, few 10700; 35-44 lbs. 10200, few 10500; 34 lbs. down 10000, few 10300.

Inshipped 70-80 lbs. ltd. 11200 all generally steady; 60-70 lbs. ltd. 11000; 50-60 lbs. ltd. 10900; 40-50 lbs. ltd. 10600; 30-40 lbs. ltd. 10400.

**LAMB CARCASS**

Choice &amp; Prime 3-4

1 1/2 Loads

55 lbs. down 12800 part load; 60 lbs. down 12800 part load; 55-65 lbs. few 12600.

**L & M FUR & WOOLEN ENTERPRISE**

Quality Electrified Sheepskins & Furs  
Tannery Direct Dist - Wholesale & Retail  
Check Our Quality, Price & Services!  
Mail & Phone Orders Accepted

- Woolen Hosp Pads - Natural & All Colors
- Pa Largest Selection of Woolen Products
- Sheepskin Coats at Reasonable Prices
- See Us At Meadowbrook Market in Leola

**Dealers Wanted**117 W Summit St., Mohnton, PA  
215-777-2465Hours Mon - Fri 9-8 30, Sat 9-5  
Wed 9-4 30, Sat 9-5**BONELESS BEEF**

6 1/2 Loads

Compared last week's bulk 1/2 90 pct. chem lean, fresh 13900 part load immed ship; 5 1/2 85 pct chem lean, fresh 12700, 6.00-8.00 12800 pt ld lower; 1/2 75 pct chem lean, fresh 10700 part load

**CURED AND PROCESSED MEATS**

8 Loads

4 Skinned Hams 16-19 lbs. 10200 steady; 2 Semi Bnlcs Hams 14-17 lbs. 11900 steady; 1 Boneless Hams 13-17 lbs 14900 steady; 1 Franks 70 Beef, 30 Pork 1 lb. pack 8300 weak.

**Lebanon Valley Auction**

Fredericksburg, Pa.

December 4, 1979

CATTLE 216. Compared with last Tuesday's market, slaughter cows mostly weak to \$1.25 lower. Few Low to Average Choice No. 2-4 1000-1250 lbs. slaughter steers 65.35-67.85, Good 64.00-66 75, few Standard 60.00-63.50. Few Good & Choice slaughter heifers 64.00-65.50. Utility & Commercial slaughter cows 46.85-50.50, couple 51.85, Cutters 47.50-50.50, Canner & Low Cutter 43.00-46.50, Shells down to 40.75. Couple Good slaughter bullocks 62.85 and 63.00. Few Yield Grade #1 1800-2085 lbs. slaughter bulls 65.60-68.00. Few Large Frame #1 400-600 lbs. feeder heifers 60.50-75.50.

CALVES 245. Vealers about steady. Couple Prime vealers 120.00 and 121.00, Choice 98.00-112.00, one at 118.00, few Good 85.00-95.00, Standard & Good 90-100 lbs. 73.00-77.50, 70-85 lbs. 66.00-

**B & R CATTLE CO.**

RD1, Marietta, PA

17547

Office Phone:  
(717) 653-8164Specializing in  
Stockers & Feeders

JOHN BOWMAN

Ph: (717) 653-5728

RON RANCK

Ph: (717) 656-9849

74.00. Farm calves \$5 to \$15 lower. Holstein bulls 90-120 lbs. 85.00-125.00; holstein heifers 90-130 lbs. 97.50-160.00.

HOGS 402. Barrows & gilts \$2.75 to \$3.25 higher. US No. 1-2 200-240 lbs. barrows & gilts 42.60-43.10, one at 43.50, No. 1-3 200-245 lbs. 41.75-42.85, No. 2-3 250-280 lbs. 39.25-40.50. US No. 1-3 275-550 lbs. sows 28.00-32.50, No. 2-3 300-550 lbs. 24.00-28.00. Few Boars 23.00-27.00.

FEEDER PIGS 104. US No. 1-3 18-22 lbs. feeder pigs 50 0-52.50 cwt., No. 1-3 40-60 lbs. 40.00-42.50 cwt.

SHEEP 6. Few Choice 75-95 lbs. wooled slaughter lambs 64.00-71.00. Couple Slaughter ewes 30.00.

BULLS: 1200 to 2228 lbs 64.00 to 70.75; 900 to 1200 lb 56.50 to 63.00.

COWS: High Choice to Prime 52.50 to 56.10; Good 50.00 to 52.50; Utility 48.00 to 50.00; Cutters 44.00 to 48.00; Canners Down to 38.00.

CALVES: High Choice 110.00 to 120.00; Good to Choice 90.00 to 110.00; Standard to Good 70.00 to 90.00.

Farm Calves: Hol. Heifers 150.00 to 187.50.

Farm Calves: Hol. Bulls 110.00 to 131.00.

HOGS: 200 to 240 41.50 to 42.75; 190 to 300 38.00 to 41 50

SOVS: 32.00 to 38.50.

BOARS: 22.50 to 28.50.

Lambs: 60.00 to 66.00.

SHEEP: 20.00 to 36.00.

**G&M Livestock**

Duncansville, Pa.

December 3, 1979

Market report higher.

Dairy Heifers 600 to 800 lbs. 82.00 to 89.00.

STEERS: High Choice and Prime 68.00 to 70.00; Good to Choice 64.00 to 68.00; Standard to Good 58.00 to 64.00.

HEIFERS: High Choice and Prime 63.50 to 65.60; Good to Choice 58.00 to 63.00; Standard 52.00 to 58.00.

Feeder Pigs: 20 to 35 lbs. - 12.00 to 18.00.

Feeder Pigs: 35 to 50 lbs. - 22.00 to 36.00.

FEEDER STEERS: Good to Choice 300 to 500 lbs., 70.00 to 87.00; 500 to 800 lbs. 60.00 to 72.50.

**LEBANON VALLEY LIVESTOCK MARKET, INC.**

1 mile East of  
Fredericksburg  
along Route 22  
**PHONE:**  
**JONESTOWN**  
**865-2881**

Sale every Tuesday at  
1:30 P.M. starting with  
feeder cattle and pigs.  
Also Hay Sale every  
Tuesday at 12:30.

**SPECIAL NOTICE HAY, STRAW & EAR CORN SALE AT DAVID H. GOOD'S FARM MACHINERY SALE**

EVERY WED. AT 12 NOON

ON NORTH MAPLE AVE., LEOLA, PA.

Home Phone 717-656-8911

Bus. phone Wed. Only 717-656-9558

**OPEN HERDBOOK****ATTENTION GRADE DAIRYMEN**

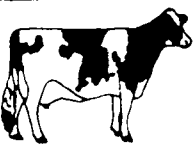
The Red & White Dairy Cattle Association accepts grade Red & Whites, Black & Whites and Colored cattle in our grade-up program. This is a complete program including permanent identification, classification and breed promotion. Over 700 members and 17,500 head registered.

Free information on request - Write Or Call Today



"BRIGHTEN YOUR FUTURE"

Red &amp; White Dairy Cattle Association

Box 63L, Crystal Spring, PA 15536  
Phone 814-735-4221

2-7FC

**SUPER DOL**

THE AMAZING "TIME RELEASE" BUFFER  
CONTAINING MAGNESIUM  
FOR RUMINANTS

CALL OR WRITE: **wmb** CORPORATION

960 E. GREEN ST., PASADENA, CA. 91106 • (213) 449-1667  
5360 MERLE HAY RD., DES MOINES, IA. 50323 • (515) 282-5415  
141 FIELDCREST AVE., EDISON, N.J. 08817 • (201) 387-2082