

## Red Rose DHIA

(Continued from Page 1)

The milk figure was up slightly, the butterfat output down one pound from last year.

These figures can be compared with the state average of 14,669 pounds milk and 550 pounds fat.

In another recognition, this one for outstanding service, Moses Martin, Ephrata was honored for his 20 years of service as a tester for the Lancaster County DHIA.

Association President Robert Kindig, Conestoga, told members that the fee increase instituted in April was generally well received by members.

He said the DHIA lost only one member as a result of the fee increase but gained 40 new members during that time.

Kindig said two cents of the increase went to operating costs and the rest went to the testers.

He also told members there would be new definitions of registered and grade herds and of mixed breed herds.

If a herd has less than 90 percent of its cows in a single breed, it will be classified mixed breeds, he said.

The same holds true for registered herds. A herd with more than 90 percent registered animals will be considered a registered herd for DHIA purposes. With fewer than 90 percent

registered, it will be a mixed grade and registered herd.

The change was made to avoid confusion resulting when only one grade cow was in an otherwise all-registered herd.

Also, the DHIA changed its award certificate program for butterfat output.

Certificates were given to herds that averaged at least 10 percent above the county production average. For this year that would be about 615 pounds fat.

Under the old system all herds with output of 550 pounds or better were recognized. But with increasing improvement in production, too many farmers were being recognized, the committee said.

Penn State Dairy Specialist Dexter Putnam told farmers the new Shook factor system would go into effect January 1, 1980 on DHIA reports.

This system will smooth out the lactation curve for cows on test.

Putnam also told farmers a new somatic cell machine has been installed at Penn State.

He said the machine should come into service in January or February. It will allow many farmers on the waiting list to get the somatic cell service and should provide openings for more farmers.

The somatic cell count

provides farmers with a picture of the udder health of each individual cow.

The report can be used to determine whether an udder is infected or whether cows are suffering because of equipment malfunction.

Lancaster County Ag Agent Glen Shurk told farmers herds on DHIA were averaging 3237 pounds more milk per year than herds not on test.

While he admitted the entire amount was not due to DHIA, he said the DHIA

reports definitely help farmers tell what a particular cow is doing.

"We're going away from individual cow care with high moisture feed and free stall housing," he said. "But still the herd averages are going up."

He advised farmers to keep close tabs on their cash flow and expenses.

He pointed to the return over feed cost as one of the most important numbers on the DHIA sheet.

Shurk said the average

farmer spent \$1 on feed for \$2.60 worth of milk.

Boosting return over feed cost is the best way to improve cash flow with a minimum of cost, he concluded.

New director for the Red Rose DHIA is Jay E. Landis, Lancaster.

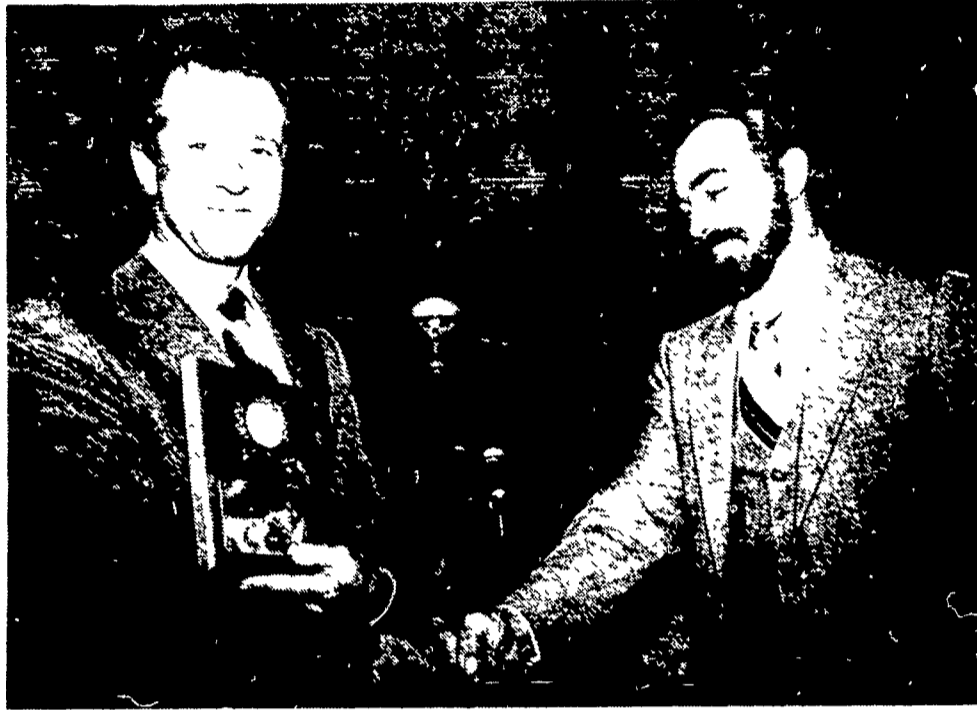
Re-elected as directors are Paul Sauder, Lancaster; Clyde W. Martin, R 1 East Earl; and J. Ray Ranck, R 1 Paradise.

The treasurer's report showed the DHIA operating

with nearly \$5000 surplus for the year. But the surplus figure was within about one percent of the total operating revenue of \$442,000.

The executive committee also told members it had placed \$20,000 in money market notes in order to take advantage of the 12 percent interest it could get.

Previously the DHIA had its reserve assets in a certificate of deposit.



Harold G. Shelly, left, is congratulated by Red Rose DHIA President Robert Kindig for having the top Ayrshire herd in the county.



Richard G. Wenger, left, had the top Brown Swiss herd in Lancaster in 1979. He receives his plaque from Red Rose DHIA President Robert Kindig.



K.D. and Else Linde had the top Guernsey herd in Lancaster County. The award was presented by Red Rose DHIA President Robert Kindig, right.

## BUTTER EGGS



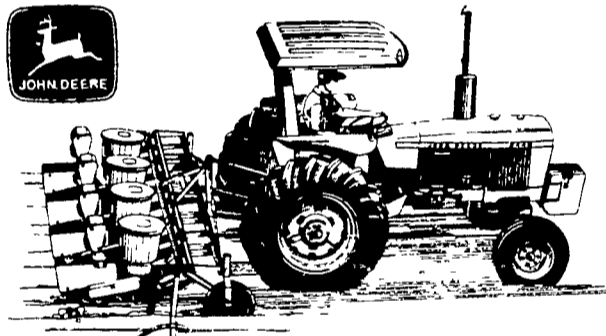
GARBER OIL CO.



Fuel Chief HEATING OIL

& OIL HEATING EQUIPMENT  
AIR CONDITIONING  
MOUNT JOY, PA  
Ph 653-1821

## John Deere 60-hp 2440



### Plow, plant, and cultivate with this tractor

This tractor, and others in the 40- to 80-hp John Deere lineup, deliver a wide range of power to handle all types of fieldwork. And with the emphasis these days on stretching fuel, these compact mighty tractors become a doubly practical choice.

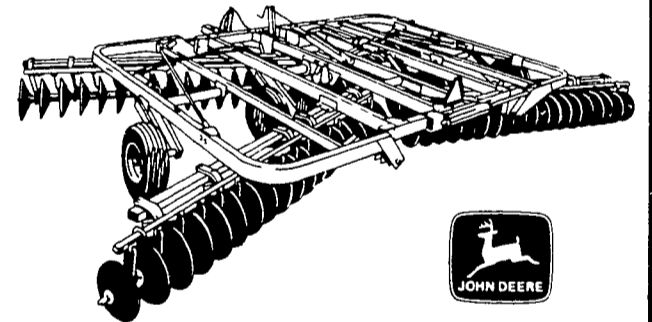
Each of these tractors is powered by a John Deere-built diesel (standard) with exceptional lugging ability for tillage work. And these engines, in spite of their power, are not fuel-hungry. Teamed with the John Deere constant-mesh transmission, they enable you to shift up and throttle back on lighter-load jobs such as hoeing and cultivating.

All these John Deere Tractors also come equipped to handle your drawn, 3-point, and PTO-driven tools.

Come in and inspect our sensibly sized, sensibly priced lineup of John Deere 40-, 50-, 60-, 70-, and 80-hp tractors

## MAKE THE EASY ADJUSTMENT TO LEVEL DISKING

Choose a new 200 Series Disk in sizes from about 11½ to 25½ ft.



New Level-Action™ Disks feature a simple crank that lets you fine-tune fore/aft leveling without a wrench. Turn the crank clockwise to reduce a center valley; counterclockwise to reduce a center ridge.

Four lips on bearing seals block out grit and dust. There's a 2-year warranty on these new Dura-Flex™ bearings. New combination scrapers adjust for abrasive or sticky soils.

The single-section 215 Disk is available from 11 feet 5 inches to 15 feet 8 inches; the 2- or 3-section 235 Disk from 17 feet 1 inch to 25 feet 7 inches.

**WAIVER OF FINANCE CHARGES TO MARCH 1, 1980 ON NEW & USED JOHN DEERE TRACTORS & IMPLEMENTS FINANCE JDFP**

LANDIS BROS. INC.  
Lancaster, PA  
717-291-1046

ADAMSTOWN EQUIPMENT INC.  
Mohnton RD2, PA 19540  
(near Adamstown)  
215-484-4391

PIKEVILLE EQUIPMENT INC.  
Oyster Dale Road  
Oley RD2 PA  
215-987-6277

NEUHAUS'ES, INC.  
RD2, York, PA  
I-83 Loganville Ext 3  
717-428-1953 or  
235-1306

SHOTZBERGER'S EQUIPMENT  
Elm, PA  
717-665-2141

A.B.C. GROFF INC.  
New Holland, PA  
717-354-4191

ROBERT E. LITTLE INC.  
Zieglerville, PA  
215-287-9643

STANLEY A. KLOPP INC.  
Bernville, PA  
215-488-1510

KERMIT K. KISTLER, INC.  
Lynnport, PA  
215-298-3270

M.S. YEARSLEY & SONS  
West Chester, PA  
215-696-2990

AGWAY, INC.  
Chapman Equipment Center  
Chapman, PA  
215-398-2553

I.G.'s AG SALES  
Silverdale, PA 18962  
215-257-5136