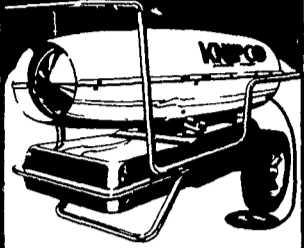


Livestock market and auction news

Hot item.
KNIPCO
portable heaters.



Efficient, economical and warm. Knipco portable heaters deliver instant heat for most unheated work areas. All models use low-cost kerosene or #1 fuel oil. Just plug into any standard grounded electrical outlet for instant heat.

For a free demonstration, see your Knipco dealer today.

FARMERSVILLE EQUIPMENT, INC.

RD #4
Ephrata, PA

Leesport Auction

Leesport, Pa.
November 23, 1979

CATTLE 231. Supply included 69 feeder cattle. Compared with last Wednesday's market, slaughter cows 50 cents-\$1.75 higher. Low to Average Choice 950-1350 lbs. slaughter steers 66.75-70.75, individual at 71.25, Good 64.00-66.50, few Standard 61.50-63.75. Few Choice slaughter heifers 64.60-67.00, few Good 60.00-60.75. Utility and Commercial slaughter cows 48.50-53.85, few to 55.10, Cutters 48.35-53.35, Canner and Low Cutters 45.50-47.50,

Shells down to 38.00. Few Choice slaughter bullocks 69.50-75.00, few Good 69.00-72.00. Yield Grade No. 1, 1150-1725 lbs. slaughter bulls 55.00-65.50. Few Large Frame #1, 420-540 lbs. feeder steers 80.00-85.00, few Medium #2, 400-500 lbs. 68.00-75.00. Few Large Frame #1, 600-800 lbs. feeder bulls 60.00-75.00.

CALVES 141. Few Choice vealers 96.00-115.00, Good 86.00-102.00, Standard and Good 90-100 lbs. 70.00-85.00, 70-85 lbs. 60.00-70.00. Farm Calves: Holstein bulls 90-120 lbs. 90.00-127.50; Holstein heifers (few) 100-140 lbs. 100.00-142.50.

HOGS 443. Barrows and

gilts 50 cents -\$2 lower. US No. 1-2 200-240 lbs. barrows and gilts 41.00-41.35, couple lots to 42.25, No. 1-3 190-250 lbs. 39.50-41.25, few lots No. 2-3 240-260 lbs. 37.25-28.00. US No. 1-3 275-550 lbs. sows 28.00-31.25, No. 2-3 300-600 lbs. 24.00-27.50. Board 27.00-31.50.

FEEDER PIGS 315. US No. 1-3 25-40 lbs. feeder pigs 51.00-57.00 per hundredweight, No. 1-2 40-60 lbs. 40.00-50.00 per hundredweight.

SHEEP 29. Choice 60-85 lbs. woolled slaughter lambs 62.00-66.00. Slaughter ewes 22.50-29.00, few to 35.00.

100 lbs. 79.00-83.00, 70-85 lbs. 74.00-80.00.

FARM CALVES: Hol. Bulls 90-120 lbs. 81.00-127.00; Hol. Heifers 85-150 lbs. 100.00-140.00, couple 155.00.

HOGS 134. No. 1-3 210-250 lbs. 39.00-40.10; No. 2-3 250-290 lbs. 35.10-38.75. **SOWS** US No. 1-3 300-500 lbs. sows 29.00-33.25, few No. 2-3 300-700 lbs. 24.75-27.75. Few **BOARS** 22.75-30.50.

FEEDER PIGS 85. Few US No. 1-3 20-25 lbs. feeder pigs 10.00-14.00 per head, No. 1-3 45-55 lbs. 19.50-21.00.

SHEEP 26. Woolled sl. lambs one lot Choice 85 lbs. 60.25, couple to 61.00.

Monday, 66.50-67.50 Wednesday.

SLAUGHTER HEIFERS: Mixed Choice and Prime 3-4 900-1100 lbs. 67.00-67.25, 3 loads 67.50 Monday; 66.00-66.25 Wednesday. Choice 2-4 900-1100 lbs. 66.00-67.00 Monday; 64.75-65.75 Wednesday. Mixed Good and Choice 2-3 800-1000 lbs. 65.00-66.00 Monday; 63.50-64.75 Wednesday.

COWS: Cutter & Utility, few Commercial 1-3 47.50-49.00, few 50.50 Monday; 46.50-59.00, Few 49.50 Wednesday; 48.00-50.00, few 50.50 Thursday.

Peoria Cattle

November 29, 1979

CATTLE: Receipts This Week: 6100; Last Week: 3000; Year Ago: 6600.

Compared with last week's close slaughter steers 2.00-2.50 lower. Slaughter heifers 1.50-3.00 lower. Cows firm to 1.00 higher. Bulls steady. Receipts about 60 percent slaughter steers, 35 percent slaughter heifers balance mostly cows. Increased receipts this week. Coupled with a lower dressed trade and absence of commodity buyers contributed to this week's sharp decline.

SLAUGHTER STEERS: Choice & Prime 3-4 1100-1250 lbs. 67.50-69.00, part load 69.00; Wednesday 66.00-66.50; several loads mostly 4's 64.00-65.00; Choice 2-4 1000-1200 lbs. 67.00-68.00; late 65.50-66.50; near three loads 67.00; 1200-1275 lbs. 65.00-65.50; mixed Good and Choice 2-4 900-1300 lbs. 64.50-65.50; Good 2-3 60.00-64.50.

SLAUGHTER HEIFERS: Choice & Prime 3-4 900-1125 lbs. 67.00-67.25, load 67.50; closing 64.00-65.00; few 65.25, load 65.50; few loads 4-5 61.50-64.00; mixed Good and Choice 2-4 850-1150 lbs. 62.00-63.00; Good 2-3 58.00-62.00.

COWS: Utility and Commercial 1-3 45.00-49.50, few 50.00-51.00; Cutter 1-2 41.00-46.00; Canner 38.00-41.00.

BULLS: Yield Grade 1-2 1100-1700 lbs. 54.00-58.50.

Chambersburg Auction

November 29, 1979

CATTLE 307. Compared with two weeks ago market, slaughter steers few low Choice 65.00-67.50; Good 63.50-66.50; few Standard 56.50-63.50; few Utility 51.50-55.00. Few Choice sl. heifers 60.75-66.00; Good 58.50-64.00; few Standard 55.00-58.00. Utility & Commercial sl. cows 48.75-53.75, couple 56.75. Cutters 49.00-53.25; Canner & L. Cutter 46.00-48.50, Shells down to 43.00. Bulls Yield Grade #1, 1050-1800 lbs. 60.00-63.50, one at 66.00.

FEEDER CATTLE: Few Medium Frame #2 350-550 lbs. heifers 65.00-68.50.

CALVES 480. Few Prime vealers 116.00-123.00, Choice 103.00-114.00; Good 92.00-105.00; Standard & Good 90-

Joliet Cattle

November 29, 1979

CATTLE: Friday through Wednesday's salable receipts 5,400; 4 days last week 3,536; same period a year ago 6,735. Slaughter steers ended the week steady to 50 lower than Wednesday of last week. Heifers ended the week 50 to 1.00 lower than Wednesday of last week. Cows ended the week 1.00-2.00 higher.

SLAUGHTER STEERS: Mixed high Choice and Prime 3-4 1150-1350 lbs. 69.50-70.00 Monday; 68.75-69.00 Wednesday; mostly YG 4, few 5, 1170-1350 lbs. 66.25-67.00, 1 load 4-5 1531 lbs. 61.00 Wednesday. Choice 2-4 1000-1300 lbs. 68.00-69.25 Monday; 67.50-68.75 Wednesday. Mixed Good and Choice 2-3 1000-1250 lbs. 67.00-68.00.

VINTAGE SALES STABLES INC. LIVESTOCK TRANSPORTATION

New equipment to serve you.

2 Possum belly trailers.

Local & Long distance.

Contact:

L. Robert Frame, manager

Call day or evenings:

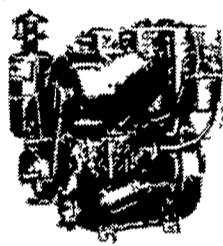
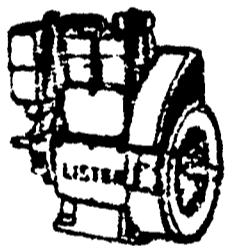
717-442-4181 Office or

215-458-5060 Home

SMUCKER'S SALES & SERVICE

RD #2, BOX 21
NEW HOLLAND, PA 17557

DISTRIBUTOR FOR:
LISTER, PERKINS & SLANZI DIESELS



• Good used diesel engines

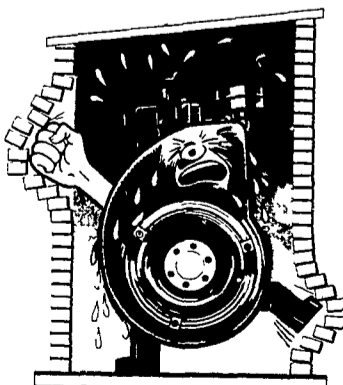
• New Sputnik wheels and parts

We mount diesels on balers, crimpers, cornpickers, etc.

Install a blower fan for better diesel & refrigeration cooling. Longer life on diesel.



LET ME BREATHE!



For lower cost per hour power, rely on



FOR PROMPT SERVICE CALL
717-354-4158 OR IF NO ANSWER
CALL 717-354-4374.

HARVEY Z. MARTIN HAY AND STRAW SALE

WILL BE DISCONTINUED UNTIL FURTHER NOTICE

HOWEVER, WE WILL STILL BUY HAY & STRAW PRIVATELY AND ON ORDERS.

For More Information

Phone: 215-445-5303

ADS
ASSOCIATION OF
DIESEL SPECIALISTS

MILLER DIESEL INC.

6030 Jonestown Rd.
Harrisburg, Pa. 17112
717-545-5931
Interstate 81 Exit 26

Diesel fuel injection and turbocharger specialists.

Locally owned and operated with over 22 years in business.

Authorized Sales & Service For:

- American Bosch
- Robert Bosch
- Roosa Master
- Airesearch
- CAV
- Simms
- RotoMaster

We Also Service:

- IHC • Caterpillar • Cummins
- General Motors injectors • Allis Chalmers
- Blowers, governors etc. • Bacharach Tools

Daily shipments by UPS, Parcel Post, or our representative who is in area regularly.