

Lancaster County DHIA Monthly Report

October 1979

A Registered Holstein cow owned by Titus B. Stoner, 3207 Bowman Road, Lancaster, completed the highest 305 day lactation. Tulip produced 28,707 lbs of milk, 1,194 lbs of butterfat with a 4.2% test. Second high lactation was completed by a Registered Holstein cow owned by Paul D. Welk, R #1, Peach Bottom. Delight produced 23,705 lbs of milk, 1,003 lbs of butterfat with a 4.2% test in 305 days.

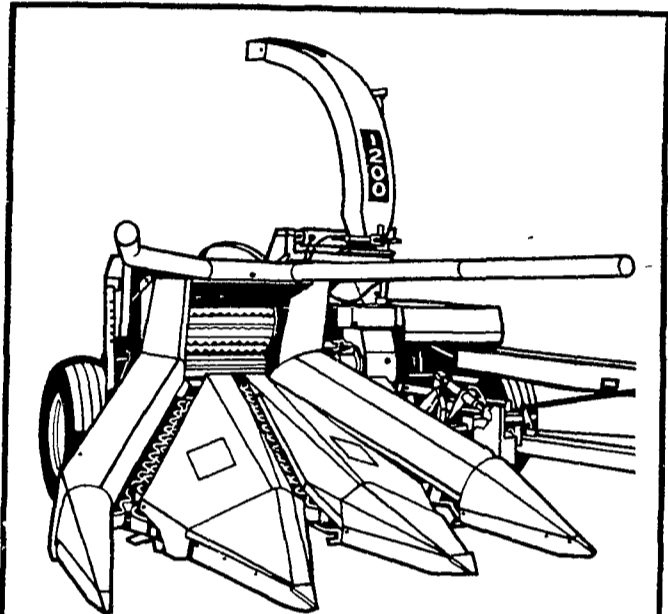
The herd of Nelson H. Wenger, R #5, Manheim, had the highest daily butterfat average. This herd of 44 Registered Holstein cows averaged 50.2 lbs of milk, 2.13 lbs of butterfat with a 4.2% test. The herd of Hiram S. Aungst, R #1, Elizabethtown, placed second. This herd of 49 Registered & Grade Holstein cows averaged 54.9 lbs of milk, 2.12 lbs of butterfat with a 3.9% test.

FIRST 305 DAYS OF LACTATION WITH 700 OR MORE LBS OF BUTTERFAT

OWNER NAME OR NUMBER	BREED	AGE	DAYS IN MILK	LBS MILK	% FAT	LBS FAT
Titus B. Stoner						
Tulip	RH	5.4	305	18,707	4.2	1194
Sis	RH	4.5	305	23,445	3.8	902
Sharon	RH	7.1	305	20,041	4.0	793
Content	RH	4.4	305	14,577	4.9	720
Paul D. Welk						
Delight	RH	9.0	305	23,705	4.2	1003
Lucifer	RH	4.1	305	22,466	3.8	855
J. Wade Groff						
Dora	RH	6.8	305	24,226	4.1	1000
Paul S. Horning						
Echo	RH	8.10	305	26,158	3.8	982
Elam J. Stoltzfus						
Candy	RH	6.1	305	25,629	3.7	954
Ivan S. Stoltzfus						
Dennie	RH	5.8	305	22,639	4.2	952
Paul E. Martin						
Mindy	RH	7.4	305	21,172	4.4	939
Lorie	RH	6.3	305	24,113	3.8	925
Earl S. Weaver						
Jo Jo	RH	7.4	305	28,121	3.3	933
Kookie	GrH	3.4	305	20,205	3.9	782
Brenda	GrH	4.2	305	22,817	3.4	771
Renee	RH	4.11	301	19,128	3.9	745
Alicia	RH	4.2	266	18,540	3.8	704
J. Mowery Frey Jr						
Miranda	RH	3.3	305	22,214	4.1	918
Melody	RH	5.2	305	22,877	3.9	885
Springarden Farm						
Pat	RH	5.2	305	15,926	3.5	916
Darlene	RH	3.10	305	22,712	3.3	752
John M. Harnish						
Peg	RH	4.7	305	25,369	3.6	905
Kelly	RH	5.0	305	24,217	3.5	842
Malinda	RH	3.8	305	24,641	3.2	823
Katrina	RH	4.1	305	21,578	3.8	819
John M. Harnish						
Rowena	RH	5.11	305	21,370	3.7	791
Melissa	RH	10.0	305	22,034	3.5	782
Ethel	RH	5.11	305	22,059	3.3	718
Vicky	RH	4.4	305	19,563	3.6	707
Ken & Joanne Hershey						
Louise	RH	10.7	305	19,032	4.7	901
Susie	GrH	4.8	277	17,558	4.1	725
Rhelda	GrH	7.3	305	20,833	3.5	721
Ellis D. Kreider						
Saphire	RH	4.4	305	20,778	4.3	900
113	GrH	4.4	305	22,308	3.5	783
66	GrH	9.0	305	19,862	3.8	745
David L. Landis						
Hnretta	RH	6.3	305	20,362	4.4	900
John P. Lapp						
Janet	RH	5.5	305	22,598	4.0	898
Lois	RH	9.0	305	24,014	3.7	894
Marvin Reiff						
61 Luan	RH	6.11	305	22,426	4.0	898
15 Hann	GrH	7.8	305	21,489	3.5	746
39 Conn	GrH	7.8	296	19,119	3.7	700
Melvin R. Eby						
Winnie	RH	5.0	305	23,484	3.8	896
John S. Zimmerman						
27	RH	7.3	305	19,497	4.6	894
2	GrH	4.2	305	24,076	3.2	774
43	GrH	4.8	305	19,925	3.7	742
James G. Kreider & Son						
31	RH	7.1	305	22,497	4.0	891
153	RH	4.3	305	23,133	3.7	860
98	RH	5.7	305	16,170	4.4	715
Naaman W. Stoltzfus						
Jammy	RH	11.2	305	23,990	3.7	890
Henry U. Stoltzfus						
Penny	GrH	8.1	305	21,977	4.0	889
Sunny Craft Farm						
Sally	RH	8.3	305	20,896	4.3	889
Rachel	RH	4.5	305	20,329	3.7	751
Edgefield Farms						
Bess	RH	5.4	302	23,053	3.8	885
Lori	RH	6.10	305	19,921	3.8	758
Ona	RH	3.7	305	19,746	3.8	758
Faith	RH	5.9	294	21,330	3.4	733

Robert L. Gruber						
63 Dane	RH	5.11	305	24,846	3.6	883
92	GrH	6.2	305	18,740	4.3	800
Carl L. Martin						
Dix O	RH	6.5	305	21,440	4.1	883
Dino	RH	4.1	301	17,956	4.5	805
Adam & Jerene Zimmerman						
Kate	GrH	4.0	291	23,644	3.7	880
Fanny	RH	6.1	282	22,635	3.4	766
LeRoy M. Oberholtzer						
Paula	RH	4.10	305	20,995	4.2	879
John Omar Stoltzfus						
Beck	RH	8.9	305	22,974	3.8	875
Raymond & Louise Witmer						
Angel	RG	4.1	305	17,668	4.9	871
Nibbs	RG	15.1	305	16,996	4.3	725
Isaac S. Beiler						
Martha	RH	6.2	305	22,397	3.9	870
Maurice F. Welk						
Lynn	RH	6.3	305	24,947	3.5	867
Iris 2	RH	6.0	305	23,364	3.4	795
Emerald	RH	4.2	305	19,121	3.9	742
Nathan E. Stoltzfus						
Thrill	RH	4.7	305	18,805	4.6	866
Opal	RH	5.6	305	18,521	4.5	834
Jolly	RH	8.4	305	18,519	4.3	788
Jonas O. Sensenig						
19	GrH	6.9	305	20,840	4.1	864
44	GrH	6.0	305	18,701	3.8	708
Brubacher & Martin						
4	RH	5.5	305	24,159	3.6	863
91	RH	3.7	305	16,789	4.3	728
Abraham S. King						
Jenny	RH	7.1	301	20,771	4.2	863
Emma	RH	3.9	305	19,877	4.1	811
Neff Brothers						
Fern	RH	5.11	305	24,040	3.6	862
Long Acres Farm						
48R	GrH	4.8	305	22,226	3.9	860
87	GrH	0.0	305	19,222	4.2	808
56	RH	6.2	305	20,224	3.9	792
Hiram S. Aungst						
Alice	RH	5.9	305	25,624	3.4	859
Dory	RH	4.5	305	23,751	3.5	825
Daffy	RH	3.4	305	20,667	3.8	791
Ellie	RH	1.4	305	22,758	3.3	760
Honey	RH	3.5	305	19,853	3.7	738
Samuel E. Beiler						
Della	RH	8.11	305	20,485	4.2	855
Alma	RH	6.5	305	23,112	3.5	811
Allan R. Shoemaker						
Angela	RH	7.0	22,920	3.7	854	
Sandra	RH	7.9	305	23,788	3.5	823
J. M. Stoltzfus						
Henket	RH	5.3	305	23,844	3.6	852
Jay C. Garber						
136	RH	5.6	305	20,945	4.1	852
33	RH	3.4	305	18,903	4.3	820
14	RH	4.2	305	22,213	3.4	763
126	RH	3.7	305	17,734	4.1	731
J. Robert Kindig						
Tammy	RH	8.5	305	20,357	4.2	852
Milicnt	RH	4.10	305	18,540	4.3	797
Gerald Martin						
Charlen	RH	6.8	305	21,333	4.0	851
Ben S. Stoltzfus						
Royal	RH	5.5	305	19,194	4.4	844
Gail	RH	6.11	305	21,947	3.7	817
Jean	RH	8.2	305	18,818	3.9	739
Earl R. Martin						
1	GrH	5.1	305	21,860	3.9	843
26	GrH	5.1	305	16,572	4.4	725
Samuel I. Esh						
Nellie	RH	6.8	305	24,376	3.5	842
Thomas C. Lapp						
Hilda	RH	7.1	305	20,578	4.1	841
Ru Be Mar Farms						
4	RH	10.6	285	20,923	4.0	840

(Turn to Page 40)



Conquer big crops

The heavy-duty Gehl 1200 forage harvester handles tractors up to 225 hp. Nine tungsten-carbide faced knives deliver 9,000 cuts per minute at 1,000 rpm. Lets you power through the heavy crops with time to spare. Two-row corn attachment, windrow pickup and snapper head available. Stop in and look at the conqueror today.



PEOPLE'S SALES & SERVICE

Oakland Mills, PA
717-463-2735

N.G. HERSHEY & SON

Manheim, PA
717-665-2271

A. L. HERR & BRO.

Quarryville, PA
717-786-3521

S. JOHNSON HURFF

Pole Tavern
Monroeville, NJ
609-358-2565 or
609-769-2565

STOFFER BROS. INC.

Chambersburg, PA
717-263-8424

ARNETT'S GARAGE

Rt 9 Box 125
Hagerstown, MD
301-733-0515

NEVIN N. MYER & SONS, INC.

Chester Springs, PA
215-827-7414

UMBERGER'S MILL

Rt 4 Lebanon, PA
(Fontana)
717-867-5161

ZOOK'S FARM STORE

Honey Brook, PA

BINKLEY & HURST BROS.

133 Rothsville Station Road
Lititz, PA
717-626-4705

AGWAY, INC.

Chapman Equip. Center
Chapman, PA
215-398-2553

KING'S TOWN TRACTOR CO., INC.

Rt. 213 South
Chestertown, MD
301-778-1640

CHAS. J. MCCOMSEY & SONS

Hickory Hill, PA
215-932-2615

WERTZ GARAGE

Lineboro, MD
301-374-2672

LEBANON VALLEY IMPLEMENT CO., INC.

Richland, PA
717-866-7518

CLAIR J. MYERS

Lake Road R1
Thomasville, PA
717-259-0453

COLUMBIA CROSS ROADS EQUIP.

RD 2 Box 62
Columbia Cross Roads, PA
717-297-3873
717-297-2991

PETERMAN FARM EQUIPMENT, INC.

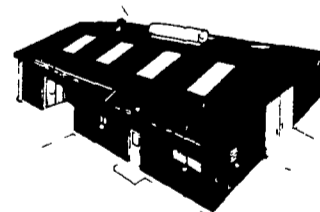
225 York Rd.
Carlisle, PA
717-249-5338



VERNON MYERS, INC.

STEEL BUILDINGS & GRAIN STORAGE

R.D. 4 - Box 845
Lebanon, Pa. 17042
Phone: (717) 867-4139

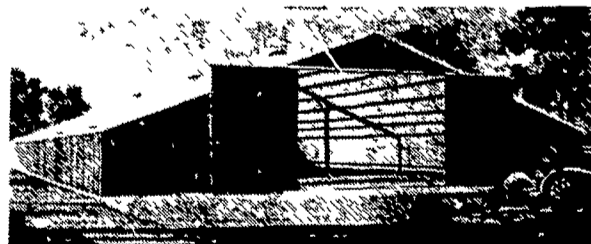


QUALITY

your best reason for wanting mfs "Stor-Age"

So strong, just 1/4 of the roof sheets support over 2,000 Lbs.!

The finest quality in engineering, materials, and workmanship have made "Stor-age", the first new bin in twenty years, the most wanted bin for grain drying and storage in the world today. Compare "Stor-age" feature for feature with any other bin on the market — you'll be convinced that it's the big dollar value in grain bins.



QUONSET

Look what's happened to the but!

COMMERCIAL and AGRICULTURAL BUILDINGS
We Offer Complete Erection On Any Size Or Style Building.

Mail Coupon Today!

- SEND STEEL BUILDINGS LITERATURE
-