

State equipment dealers share direct line to Washington

WASHINGTON, D.C. — Lynn Daft of the President's Domestic Policy Staff was the featured participant in a special telephone conference-call hook-up with some 600 Pennsylvania farm equipment dealers, meeting at the Seven Springs Resort in Champion.

The program, called Washington on the Line, took place Thursday.

Chester Heim, Pennsylvania Deputy Secretary of Agriculture moderated

the question and answer dialogue at the meeting site.

Discussion focused on major issues affecting the U.S. farm economy in general, and Pennsylvania farmers and equipment dealers in particular — fuel allocation, expansion of foreign agricultural markets and regulations in the trucking business — to name a few topics.

Leading spokesmen for the equipment dealers placed questions directly to Daft in

Washington; and special telephone equipment enabled everyone in attendance to listen freely to the discussion.

The program was sponsored by the Pennsylvania Farm and Power Equipment Association and the Agriculture Council of America (ACA), a communications group supported by farmers and agribusiness interests throughout the United States.

The approach of Washington on the Line is to link groups meeting all across the country with top decision-makers for a live question and answer dialogue — to bring national leaders in Washington closer to the people affected by their decisions.

ACA has conducted the program several times over the last year; this is the first time in Pennsylvania.

"I look forward to hearing the questions and com-

ments," commented Daft, the Associate Director for Agriculture of the Domestic Policy Staff.

"Those of us in

Washington can always benefit from this type of two-way communication with the people affected by the decisions made here."



NEED MORE ROOM? Read The Classified Real Estate Ads

COME ON YOU GUYS... MOVE OVER!

SAVE \$\$\$

Ask Us For Repowering

REPOWER WITH VM DIESEL

SAVE \$\$\$

Ask Us For Repowering

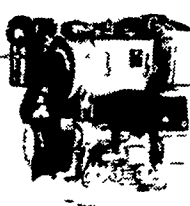
Harvesters, Haybines, Tractors, Compickers, Balers, Hydraulic Systems, Corn Binders, Choppers



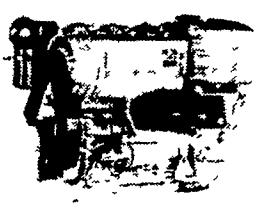
1050 SU SERIES



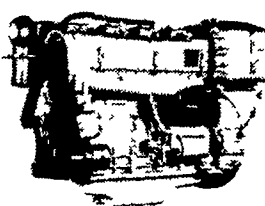
2800 R.P.M.
22 SAE HP
20 DIN HP



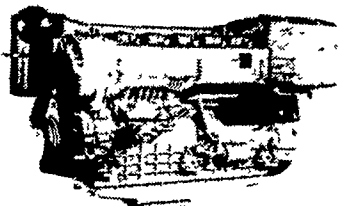
2800 R.P.M.
44 SAE HP
40 DIN HP



2800 R.P.M.
66 SAE HP
60 DIN HP



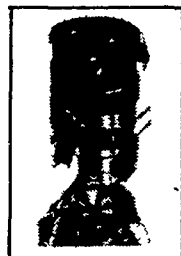
2800 R.P.M.
88 SAE HP
80 DIN HP



2800 R.P.M.
132 SAE HP
120 DIN HP

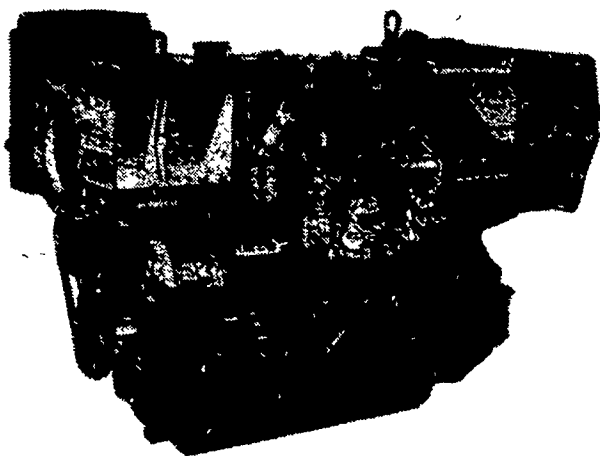
THE NEW AND REVOLUTIONARY FAMILY OF ENGINES

All New HR Series

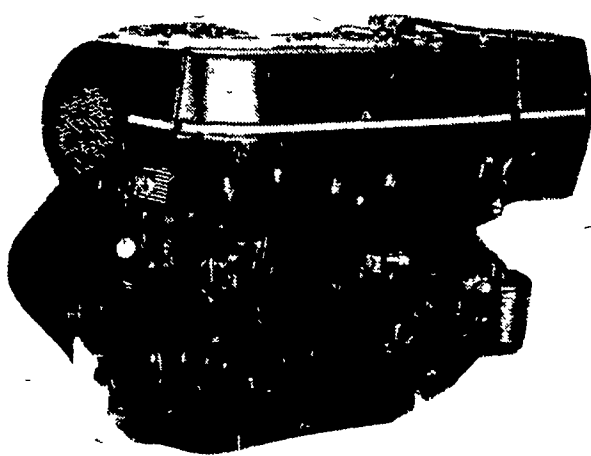


Oil Cooled Jacket

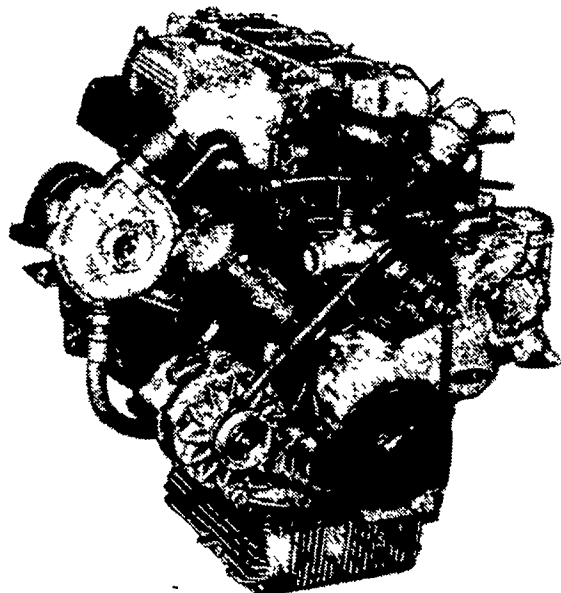
OIL COOLED



AIR COOLED



WATER COOLED



General Features:

- Integrally cast cylinders with inserted and removable wet type cylinder liners
 - Light hypereutectic alloy pistons
 - Extra-resistant steel connecting rods alloyed with special alloy head bearings
 - Surface hardened steel crankshaft
 - Drop-forged, casehardened and tempered steel camshaft
 - Anti-friction cast-iron tappets alloyed
 - Cast-iron tunnel type crankcase
 - Rotatory injection pump with mechanical governor
 - Force-feed lubrication with built-in circuit and lobe type pump
 - Diaphragm pump feed
 - Oil and fuel filters with integral type element.
- Special structure and patented engine with consequent increases in performance and easier operation with low weight/output ratio low smoke emissions.
- Engine based on a design "modulus" formula which allows a maximum parts standardization and interchangeability.

Ask For Horsepower Ranges Of Above
THE "RIGHT FROM THE START" DIESEL ENGINE LINE
FOR FAULTLESS PERFORMANCE

USED DIESELS

- (5) SR 2 Lister
- (1) DVA 1500 Sianzi
- F6L - 912 Deutz
- (1) Cylinder Deutz
- (2) SR 3 Lister
- DVA 2200 Sianzi

QUEEN ROAD REFRIGERATION

Box 67, Intercourse, PA 17534
Phone: John D. Weaver - 717-768-9006 or 768-7111
or Answering Service - 717-354-4374

24 HOUR SERVICE