

## Ziegler elected MCMP District 14 director

**BY DEBRA STRICKLER**  
LEOLA — In the past two years over 50 dairy farmers in the Lancaster, Lebanon, Berks, and Dauphin Counties have joined the Maryland Cooperative Milk Producers.

As a result, the first annual district 14 meeting was held Wednesday evening, November 7, at the Leola Family Restaurant.

The primary purpose of this meeting was to elect a director for the new district to begin serving immediately. It was also an opportunity for the MCMP officers and management team to acquaint members with the Cooperative and the status of the Holly Manufacturing Plant.

Herbert W. Wessel, Jr., president of the directors, presided over the evening's meeting.

Boyd M. Cook, assistant

manager and secretary for the organization used a slide presentation to acquaint members with the regional plants and Baltimore facilities.

In the President's report, Wessel reported that after tonight there will be 12 Maryland directors, six Pennsylvania directors and one director from West Virginia. He predicts that this ratio will continue to change as more producers join the Cooperative in various regions.

Wessel assured those in attendance that the 19 directors are all working dairy farmers and they work hard as a part of the board. The essential job of the board is to "make the decisions for the good of all producers," Wessel noted.

He also encouraged members to recruit new cooperative members in the district.

After the President's remarks the important election of the evening was held.

As is required in the by-laws, the group nominated two directors.

After the election, it was announced that Victor Ziegler of R2 Myerstown would represent District 14 of the MCMP for the next three years.

In his first remarks as a

new director, Victor noted that a "co-op is only as good as its members." "There is no problem we can't solve in unity," he added. He encouraged members to notify him of any concerns they may have. He is as close as the telephone.

Optimism was in the air as Ralph Strock, business manager predicted that the general outlook for dairy farmers for the last quarter of 1979 and the first quarter of 1980 would be favorable.

Stock reported on the status of the Holly Plant in Carlisle, Pa.

The board of directors has decided that, instead of recovering the loss from the April fire, it will make maximum use of the investment credit now available to cooperatives and delay the payment of 1969 revolving funds.

In examining the present operation of Holly, Stock said, "The plant has successfully produced dry whole milk in sufficient quantity to assure our customers that 'Holly is back'."

"And, although a number of changes are still needed to enable the plant to meet all the contract specifications, we are confident that the members own one of the finest, most efficient butter/powder plants in the country."

He described the plant for the 80's - energy and labor efficient.

Tom Moore, district fieldman, encouraged the producers to be aware of the new antibiotic test that will be used after July 1, 1980. This test is ten times as sensitive as the present test. He wants the farmer to be sure and follow label directions on antibiotics.

Monetary incentives are given to those producers with low bacteria counts. Moore would like to see better housekeeping in some milk houses.

At the conclusion of the evening, Herbert Wessel announced that the 51st member of the 14th MCMP District had joined that day. It was assured that by next year even more members will be added to the District.



Ziegler, left, was elected the first director of the Maryland Cooperative's Milk Producers 14th district. Ziegler milks 300 Holsteins on his Myerstown farm. Pictured here is his wife Grace and their one son, Lynn.

## Local farm buys top Guernsey

LOUISVILLE, Ky. - The Grand Champion of the Guernsey National Junior Show commanded the top price, \$7500, at the Guernsey sale held in conjunction with the North American International Livestock Exposition, being held November 3 to 17 in Louisville.

The three-year-old cow, Rankin Farms Golden Brown, was consigned by Dee Dee Rankin of Atlanta, Illinois. Purchaser was A Grandview Farm, Middletown.

Second highest sale price was \$6,400, paid for Spring Walk Hornets Valeeta, a three-year-old cow consigned by Floyd Wachte of Big Prairie, Ohio.

The only bull in the sale, Chedco Vertas Fayvor, was sold for \$4,000 to the

Canadian Young Sire Committee, a group representing the three artificial breeding associations in Ontario. Murray L. Reissner, secretary of the committee, said that they had come to Louisville to bid on that one calf and to see the National Guernsey Show.

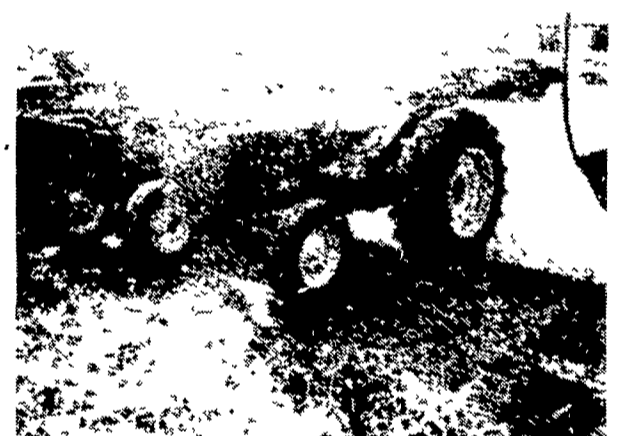
Thirty-one head were sold at a total price of \$86,675. The average price for the sale was \$2,802. The Guernsey Sale was the 54th renewal of an event which began in 1926.

It is the country's oldest continuous consignment sale, managed by the same firm. John B. Merryman, of the Merryman Company, Sparks, Md., said that the show has a history of having top quality stock consigned to the auction.

# Fall Sale



**USED TRACTOR**  
John Deere 1020 w/47 Loader . . . . \$5,950



**USED TRACTOR**  
John Deere 1520 Diesel,  
(Completely Overhauled. . . . .) \$5,850

### USED TRACTORS

Oliver 1800 Diesel \$4,850.00  
IHC Super C, fast hitch w/2 bottom plow 1,675.00

### USED SPREADERS

JD 40 w/hydraulic end gate \$1,050.00  
NI 150 bushel PTO 650.00

### USED HARVESTER SPECIALS

NH 880 2-row narrow row head \$3,650.00  
NH 717 w/1-row head 2,195.00  
NH 717 1,175.00  
Fox 1000 RPM PTO w/2-row corn hd & Pk up attach 1,495.00  
MF 620 w/2 row and pickup 2,450.00

### USED BALER SPECIALS

JD 24T w/#2 Thrower \$1,550.00  
New Holland 67 775.00  
John Deere 14T 750.00  
John Deere 14T w/ejector 450.00

### USED HAYBINES

NH 1495 Self-Propelled 12' w/partial cab, real sharp \$14,750.00  
NH 469 2,550.00  
New Holland 479, as is 2,150.00  
Hesston 320 9' 1,850.00  
Gehl 770, 7 ft 1,975.00

### USED GRAIN DRILLS

Co-op 15x7 Fert Grain Drill w/grass seed attach \$750.00  
John Deere 15x7 FBB Drill 550.00

### USED PLANTER SPECIALS

Tag 11650 John Deere 1250 - 6 Row Plateless \$2,350.00  
1229 Ford 4 Row 775.00  
Tag 11934 JD 494 1,275.00

### USED TILLAGE SPECIALS

MF 620 12' Disc Harrow \$2,950.00  
Ford 4x18" auto reset plow 2,200.00  
Ford 4-16" Plow 950.00  
JD KBA 32x18 Wheel Carrier Disc 875.00

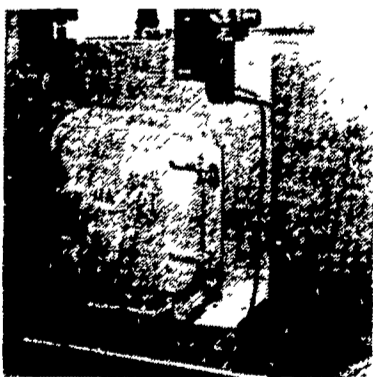
### USED COMBINE SPECIALS

Cockshutt 427 w/Power Steering & 10' Platform \$1,450.00  
JD 55 Corn Soybean Special 12' head 9,700.00  
JD 55 Diesel w/cab, 12' platform 7,500.00

### MISCELLANEOUS

John Deere #18 1-row Corn Picker \$950.00  
New Set 18 4x30 Snap on Duals w/New Goodyear 6 Ply Tires 1,050.00  
JD 321 42' Elevator 1,175.00  
Used NH #8 Crop carrier 1150.00  
Grove Gear w/tires 8 ply 375.00

## THE MASCOT™ WOOD FIRED HOT WATER BOILER



- FEATURES**
- FIRE BRICK LINED
  - 12 GALLON WATER CAPACITY
  - DESIGNED TO HEAT THE AVERAGE SIZE HOME
  - 24 VOLT AUTOMATIC DRAFT CONTROL
  - ONE QUARTER INCH BOILER PLATE STEEL CONSTRUCTION
  - CAST IRON DOOR AND FRAME

INSURE YOURSELF NOW AGAINST POWER FAILURE, FUEL SHORTAGES AND HIGH HEATING BILLS WITH A MASCOT.

**IN STOCK FOR IMMEDIATE SALE**

★ IN STOCK; Chimney Brushes, Ceiling Registers, Insulated Chimney and a wide variety of Woodburning Stoves.

## Bowman's Stove Shop

R D 3, Napperville Road Tues, Wed Sat 9-5  
Ephrata, PA 17522 Thurs, Fri 9-9  
Follow the signs from the Monday - Appointment Only  
Light at Hinkletown

717-733-4973

Financing Available



## Evergreen Tractor Co. Inc.

30 EVERGREEN RD., LEBANON, PA 17042,  
PHONE (717) 272-4641

AUTHORIZED  
SPECIALTY NEW HOLLAND  
PARTS and SERVICE