

Livestock market and auction news

Dewart Auction

Dewart, Pa.
October 29, 1979

CATTLE 247. Compared with last Monday's market, slaughter steers about steady. Slaughter cows uneven, about steady. Choice 2-4, 950-1150 lbs. slaughter steers 64.50-66.25, individual at 67.25. Good (few) 62.60-64.00, Standard 57.25-62.25. Few Choice slaughter heifers 58.00-63.25, few Standard and Good 55.00-60.50. Utility and Commercial slaughter cows 46.75-50.35, couple to 51.25, Cutters 47.00-49.85, Canner and Low Cutters 43.00-47.50, Shells down to 40.50. Few Yield Grade No. 1, 1150-1575 lbs. slaughter bulls 59.75-62.00. Large Frame #1, 550-800 lbs. feeder steers 60.00-67.00. Few Large Frame #1, 500-650 lbs. feeder heifers 64.00-69.00. Few Medium Frame #1, 400-600 lbs. feeder bulls 60.00-64.50.

CALVES 166. Vealers

about steady. Individual Prime vealer at 118.00, Choice 104.00-112.00, few Good 96.00-102.00, 75-100 lbs. Standard and Good 86.00-96.00. Farm Calves: Holstein bulls 90-125 lbs. 100.00-131.00; few Holstein heifers 90-130 lbs. 140.00-160.00.

HOGS 580. Barrows and gilts 50 cents-\$1.25 lower. US No. 1-2 200-240 lbs. barrows and gilts 35.80-36.10; couple lots to 36.80, No. 1-3 200-250 lbs. 35.00-35.90, No. 2-3 250-280 lbs. 33.00-34.00, No. 1-3 130-175 lbs. 30.00-32.00. US No. 1-3 300-550 lbs. sows 24.00-28.50. Boars 22.50-27.00.

FEEDER PIGS 272. US No. 1-3 15-20 lbs. feeder pigs 9.50-10.00 per head, No. 1-3 25-45 lbs. 12.00-18.00 per head, No. 1-3 50-60 lbs. 26.00-31.00 per head.

SHEEP 20. Choice 80-110 lbs. woolled slaughter lambs 60.00-68.00. Few Slaughter ewes 10.00-18.00.

Middleburg Auction

October 30, 1979

CATTLE 246. Compared with last Tuesday's market, slaughter steers 50 cents to \$1 lower. Slaughter cows 25 cents to \$1.50 lower. Choice No. 2-4 1000-1250 lbs. slaughter steers 64.35-67.25, Good 62.50-64.50, Standard 58.50-62.00, few Utility 55.50-57.00. Few Choice slaughter heifers 62.35-65.50, few Good 61.00-62.10. Utility & Commercial slaughter cows 45.50-49.25, Cutters 45.00-48.50, Canner & Low Cutter 41.75-44.75, Shells down to 40.00. Yield Grade #1 1200-1650 lbs. slaughter bulls 54.35-62.10. Large Frame #1 400-650 lbs. feeder steers 66.00-79.00, couple to 82.00; large frame #2 550-800 lbs. 58.00-65.00.

CALVES 142. Vealers about steady. One Prime vealer at 119.50, Choice 102.00-112.00, few Good 94.00-100.00, Standard & Good 70-105 lbs. 85.00-93.00, Utility 50-

100 lbs. 65.00-80.00. Farm calves, holstein bulls 90-125 lbs. 92.00-130.00; few holstein heifers 90-160 lbs. 120.00-202.00.

HOGS 562. (Monday, October 29, 1979) (86 head Tuesday, October 30, 1979). Barrows & gilts steady to weak. US No. 1-2 200-230 lbs. barrows & gilts 35.75-36.35, No. 1-3 190-260 lbs. 35.00-36.00, No. 2-3 200-270 lbs. 34.00-35.00. US No. 1-3 300-400 lbs. sows 28.00-30.00, No. 2-3 350-600 lbs. 23.50-25.75.

FEEDER PIGS 630. US No. 1-3 20-35 lbs. feeder pigs 9.00-15.00 per head, No. 1-3 35-50 lbs. 14.00-24.00, No. 1-3 50-60 lbs. 24.00-27.50 per head.

SHEEP 5. Couple Choice 100 lbs. woolled slaughter lambs 58.00.

Chambersburg Auction

November 1, 1979

CATTLE 259. Compared with last Thursday market, Sl. cows steady to 75 cents higher. Few Choice 63.35-68.75; few Standard 58.00-62.00; few Utility 55.00-56.00. Sl. heifers few Good 57.75-60.50; few Standard 53.50-

57.00. Utility & Commercial sl. cows 47.00-52.50, couple 54.50. Cutters 47.75-53.25; Canner & L. Cutter 44.00-48.50, Shells down to 40.25. Sl. bullocks few Good & Choice 58.00-64.75. Bulls Yield Grade #1, 1200-1800 lbs. 54.0-62.50, couple to 68.00.

FEEDER CATTLE: Medium frame No. 1 Choice 550-800 lbs. steers & bulls 56.50-66.50.

CALVES: 495. Vealers uneven, mostly steady to \$6 lower. Couple Prime vealers 118.50 & 119.00, Choice 103.00-116.00; Good 90.00-105.00. Standard & Good 90-100 lbs. 87.00-91.00, 70-85 lbs. 84.00-88.00. Utility 50-100 lbs. 65.00-80.00.

FARM CALVES: Hol. Bulls 90-125 lbs. 89.00-125.00, few to 132.00. Hol. Heifers 90-150 lbs. 155.00-190.00.

HOGS 77. Barrows and gilts #1 higher. 1 lot No. 2-3 280 lbs. 32.00, few No. 1-3 210-240 lbs. 34.85-35.10. **SOWS** US No. 1-3 275-500 lbs. sows 26.50-30.00. **BOARS** 23.75-26.00.

FEEDER PIGS 100. US No. 1-3 20-35 lbs. feeder pigs 9.50-14.00 per head, No. 1-3 40-60 lbs. 15.00-20.50.

SHEEP 43. Woolled sl. lambs Choice 70-100 lbs. 57.25-62.00. Slaughter ewes 24.50-38.50.

Thomasville Auction

October 31, 1979

CATTLE 86. Choice sl. steers 65.00-68.75; medium-good 59.00-63.00; holstein steers good 54.50-56.75; medium-good sl. heifers 47.00-61.25; good sl. cows 47.00-49.50, utility 43.00-45.00, canners and cutters 39.00-42.00. Good bulls 57.60-67.25. Calves 67. Choice vealers 100.00-110.00; standard 70-85 lbs. 75.00-90.00; holsteins bull calves, 95-115 lbs. 93.00-111.00; holstein heifers 90-120 lbs. 164.00-175.00. Hogs 113. private treaty 200-230 lbs. 35.00; butcher sows 23.50-26.00; heavy boars 22.00-24.00; feeder pigs 14.00-18.00 per head.



BUTLER CLEAR SPAN BUILDING



FARMSTED I

FREE ACCESSORY ALLOWANCE NOW ON ALL BUTLER BUILDINGS

30'x50'x11'

LESS THAN \$4000*

FARMSTED I GALV. ROOF & WALLS 16'x10' Double Slide Door

40'x50'x14'

LESS THAN \$5000*

FARMSTED I GALV. ROOF & WALLS 20'x13' Double Slide Door

50'x50'x16'

LESS THAN \$7000*

FARMSTED I GALV. ROOF & WALLS 24'x15'7" Double Slide Door

60'x50'x16'

LESS THAN \$8500*

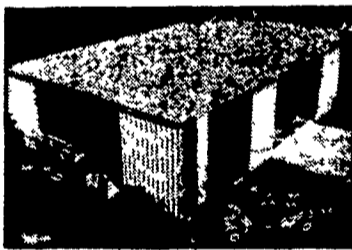
FARMSTED I GALV. ROOF & WALLS 30'x15'3" Double Slide Door

*ALL BUILDINGS F.O.B. ANNVILLE, PA.
*(Buildings not equipped as shown)

*VARIOUS SIZES HEIGHT & WIDTH AVAILABLE

...Special Grain Storage Buildings Available
Prices Based On Independent Survey of Agri Builders
Price Could Vary With Each Agri Builder

"FREE ACCESSORY ALLOWANCE TO END NOV. 9"



FARMSTED II AND



AG-MASTER 2:12

For more info. on buildings advertised by our A/B's, please mail to:

P.E. HESS, BUTLER MFG. CO
Box 337, Oxford, PA 19363

Name _____
Address _____
City _____
State _____ Zip _____
Phone _____ (include area code) LF

CALL YOUR BUTLER AGRI-BUILDER TODAY

Beatty & Nelson Contractor	717 677 9310	O. A. Newton & Son Co.	302 337 8211
C & M Sales Inc.	717 253 161	Royer's Farm Service	717 832 3201
A. E. Engel Inc.	609 983 4404	D. F. Smith Inc.	717 436 2151
Knorrville Construction	414 326 4188	Glenn M. Stahlman	301 777 0582
Kaffler Sales & Service	914 438 1180	Top Enterprises Inc.	215 929 2553
Greenside Contracting	301 472 2161	Tempo Parts Co. Inc.	301 778 4454
Orville Mack	315 759 1331	Tri County Agri Systems	609 467 3174
Leroy F. Myers Inc.	301 582 1552	Tri State Marine Dist. Inc.	301 867 1447
Al Maurer	17 864 1145	Wilder Construction	717 392 8280
W. R. Mandy Contractor	4 24 12804	Yans, et al. Concrete Service	717 962 2864

MINERAL SUPPLEMENTS

who needs them? You do!

Quality roughage alone can provide much of the protein and energy needed for milk production. But since roughages may lack both balance and quantity of minerals necessary for maximum milk production, bone and muscle development, and the most efficient utilization of other nutrients—many dairymen need a mineral supplement program.

How can you tell if you need a mineral supplement program?

Let us make a free analysis of your forage crops. We'll give you a report on the nutrient value of your hay, silage, or other roughages, along with recommendations for any supplements—if necessary. We won't try to sell you anything you don't need!

Our three mineral mixes—Beacon Phos-Min, Beacon Mineral Ade and Beacon Cal-Min—are formulated by highly respected dairy nutrition specialists. The supplement they recommend will contain the necessary minerals to make up deficiencies or imbalance in your roughages and to achieve the proper calcium-phosphorus ratio in your total feeding program.

You can rest assured that you aren't paying extra for exotic ingredients, high transportation cost, and expensive promotion and sales cost.

With BEACON, you get more mineral units per dollar invested.

Mineral supplements, formulated especially for the cow at reasonable cost, are part of what we call "No nonsense feeding".



York, PA
Phone 717-843-9033

Beacon Milling Company, Inc.

We're employee owned. That's why we shine.

Available At Beacon Dealers