

Norlebc Chapter receives National Safety Award

KANSAS CITY, Mo., — In recognition of their continuing promotion of safety awareness, 119 chapters of the Future Farmers of America (FFA) will receive outstanding achievement awards as a part of the National FFA Chapter Safety Award Program.

Sponsored jointly by the Farm and Industrial Equipment Institute (FIEI) of Chicago and Dow Chemical U.S.A. of Midland, Michigan, through the National FFA Foundation, the awards will be presented on Wednesday, November 7, at the 1979 National FFA Convention in Kansas City, Missouri.

The top 20 FFA chapters will be presented "Gold Emblem" safety awards, the highest award in the program. "Silver Emblem" awards will be presented to another 37 chapters, and 62 chapters will receive the "Bronze Emblem" award.

The Clear Spring Chapter, Clear Spring, Maryland will be receiving the gold emblem for their Chapter safety program.

In Pennsylvania the Northern Lebanon County Chapter, Fredericksburg, has earned the silver emblem. Two Pennsylvania chapters, Curwensville, and Headwaters Chapter, Ulysses will be receiving the bronze emblems.

Maryland herd classifies cows

RISING SUN, Md. — The Knutson Brothers Lovdal Farms herd of Registered Holstein dairy cattle recently were evaluated for functional conformation.

The work was completed by a Holstein classifier dispatched from the breed's headquarters in Vermont. Holstein breeders use this official service of the breed to improve their herds, build pedigree performance and enhance the market value of their animals. Over 6,000 progressive Holstein dairymen throughout the U.S. are enrolled in classification with the resulting information summarized by sire to give dairymen a "consumer report" on the transmitting profile of a bull.

Individual animals are evaluated and receive a rating of Excellent, Very Good, Good Plus, Good, Fair or Poor. Lovdal Farms herd is made up of 4 Excellents, 26 Very Goods, and 31 Good Pluses.

Holstein classification is a companion effort in herd improvement with a monthly check for milk yield offered by the national dairy herd improvement association. Collectively, these performance ranking efforts are responsible for elevating the American Holstein into world prominence.

A broze emblem has also been awarded to the Damascus, Maryland Chapter.

In New Jersey, the Warren Hills Regional Chapter has received a silver medal with the North Hunterdon Chapter, Annandale, receiving a bronze emblem.

The chapters recognized this year participated in a wide range of safety activities including: farm and home safety surveys, auto and farm equipment safety inspections, promotion and sale of slow moving vehicle signs, safe corn harvest campaigns, establishments of rural fire districts, programs to illustrate safety procedures in the use of farm chemicals and many other farm and home safety projects.

The FFA Chapter Safety Award is one of three awards recognizing chapter participation in activities of national significance. It is designed to increase awareness of safety practices through classroom instruction and educational activities. Each year accidents on the farm and in the home exact a tragic toll of death, destruction, and mutilation among rural and urban families. The FFA Safety Program is designed to make students aware of the causes of accidents and how they can be prevented.

Ressler brothers

(Continued from Page 45)

they plan to build a crowd gate of their own.

"I'd like to be able to say things will be going smoothly by the beginning of next year," Ray says.

The brothers estimate milking time at two hours when everything is flowing right.

This is quite a hunk off the three hours to three hours and a quarter they now spend.

The walls of the parlor are lined with Kemlite glass board. There are three inches of wall insulation and six inches for the ceiling.

A 20 foot in-line cooler will drop the milk temperature by 25 degrees between the cow and the bulk tank.

The only cost for cooling will be the original cost of the unit.

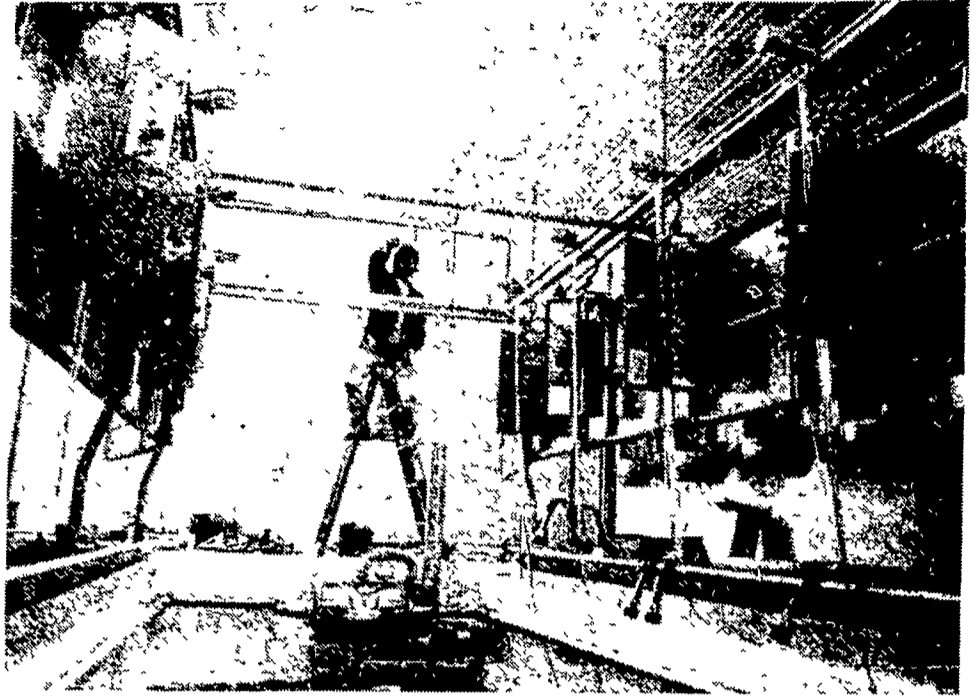
Milk will be held in a new 2000 gallon Girton bulk tank for pickup every other day. Milk is shipped to Eastern.

A separate 30-gallon water heater will be used to provide wash water. The extra gas water heater will assure uniform water temperature.

A Mikro-Spray unit will add detergent at a predetermined rate for washing.

The Ressler will have a small office area to one side of the bulk tank room.

To the other side of the



Workman puts the finishing touches on the double-six milking parlor. All units are equipped with automatic detachers.

milking parlor is a 16 stall treatment area. It can be used to hold sick cows or for breeding.

The treatment center is designed so it can be washed down to a sump at the center of the area.

Outside, and beyond the cow treatment area, will be a separate block building for heifers. It will be open toward the warm side.

The building is designed at 40 by 80 feet, although the Ressler are not sure exactly how many cows it will hold.

"We'll start calves there and take them to another building after about six months," Lee Ressler figures.

The existing dairy barn

will be converted to box stalls, the brothers say.

"It has been busy all summer long," Ray says. With the 215 acres they own plus another 50 rented, plus the cows, plus the construction, it has been a hectic period.

"I think I'll appreciate that parlor the most," Ray says.

He is looking forward to the end of shifts in the barn, he says.

The brothers expect to have one man run all 12 units. Present plans call for one of them to do all milking for a week and the other to

take the chores the following week.

Chores will be a bit easier, too, thanks to things like the clean-in-place washers, the automatic detachers, and even the ease of feeding their mechanized total mixed ration program.

The Ressler, and some of the firms which helped them take their "one big step" are staging an open house at the farm on November 10 from 9 until 3.

It might be a good time to stop by and offer them some tips on getting their cows used to all that newly built comfort.



**RIDE 'EM
COWBOY!**
WE'LL SET UP
A DEMONSTRATION



Take time off from that hard, sweaty hand labor and see how the compact Bobcat loader can do it easier, and save you money. Six model series from 500 to 3700 pound rated operating capacity. 4-wheel drive for full-circle maneuverability. Variety of attachment options. Exclusive Bob-Tach system for fast attachment change. It's some kind of animal! Give a Bobcat a ride, just name the time and place.

**WE ALSO HAVE SOME
GOOD USED BOBCATS**

Leiser's

SALES SERVICE & RENTALS

3608 Nazareth Pike
Bethlehem, PA 18017
Phone 215-691-3070

Rt 100 Macungie, PA
Phone 215-966-5353

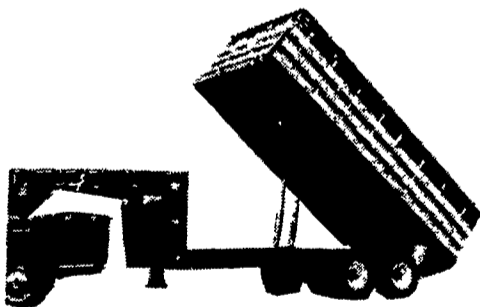


TRI-STAR Trailers...

More Hauling Capacity for Less Money

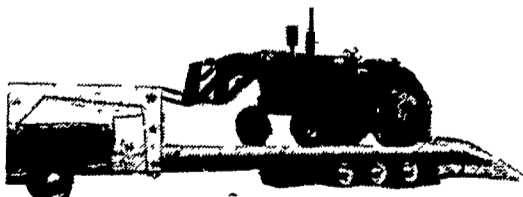
GRAIN

- Original taper-formed Goose-neck design — patented
- High Flotation Tires—10 ply, 12 x 16.5 (Go where others won't)
- 20-ton Twin Telescoping Hydraulic Cylinders (Guaranteed to raise and dump any grain load)
- 18" rear clearance when trailer is fully raised
- Bear Trap Hitch®—Lavorsaving, one man hookup



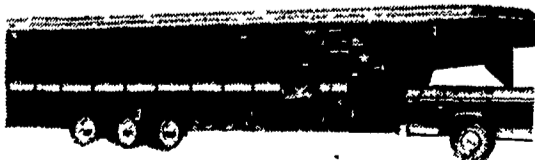
FLATBED

- Rugged 60" Steel Frame
- Original taper-formed Goose-neck design
- Lengths from 16' to 30'
- Tongue and groove pressure treated flooring



LIVESTOCK

- Rugged Steel Frame
- Steel Front and Top
- Heavy Duty, Slipper-Spoon Suspension
- 8 ft. wide hauling capacity
- Removable side and front panels for Extra ventilation



See your area Tri-Star Trailer Dealer Today
Go Tri-Star — You'll Go STRONGER

KAUFFMAN AGRI TRAILER SALES
Box 655 RD 1
Elizabethtown, PA 17022
717-367-3550

