

## Adams farmers discuss high food prices

GETTYSBURG — The Mason Dixon Advisory Council of the Adams County Farmers' Association at their October meeting discussed reasons why consumers complain about the high food prices. According to John Roth, discussion leader, labor for processing and distributing farm foods costs 32 cents of every dollar spent in food stores and restaurants.

Roth said that according to USDA these labor costs have been increasing over 10 per cent every year since 1973 and have been the major factor behind food price increases. USDA also says

sluggish productivity which has not grown fast enough to offset sharp gains in wages is why labor costs have risen.

Between 1973 and 1978 wages for employees in all segments of food marketing increased at average annual rate of 8.4 per cent while rate of increase for employees in other industries was 7.6 per cent.

Meanwhile productivity in the food industry has grown very slowly since the 1970's. In fact in the food stores productivity actually decreased six per cent during this period.

Reasons for slowdown are environmental safety rules which have directed capital away from labor saving investments.

Roth added there are work rules designed to protect jobs and maintain number of working hours which have hindered adoption of labor saving innovations.

Then too, steady increases in employment and hours of work have not been offset by greater sales at retail food stores.

Government regulations and abundance of money more than any other factors cause high retail food costs.

## Eastern Pa. livestock sale slated for Allentown

ALLENTOWN - Members from Bucks, Carbon, Lehigh, Montgomery, Northampton and Schuylkill County 4-H Clubs will offer market steers and lambs for auction at 10 a.m., Saturday, November 10, at Agriculture Hall, Allentown Fairgrounds. This public sale, and the show which will precede it on Friday, (November 9), will comprise the 39th Eastern Pennsylvania 4-H Beef and Lamb Show and Sale.

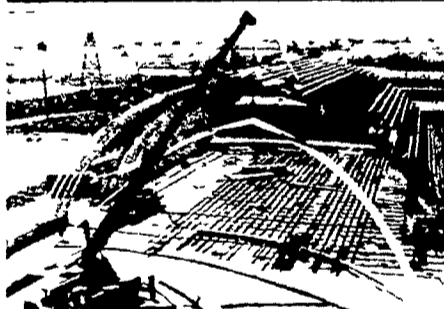
Approximately 40 lambs and 60 steers were shown and sold in this even last year. Animal numbers this year should be about the same. For most of the 4-H'ers participating, this will be the final activity related

to their 1979 steer and lamb projects.

The public is invited to share the excitement of the judging and selling of quality animals presented by well-motivated young people. Ralph Zettlemoyer will be the auctioneer.

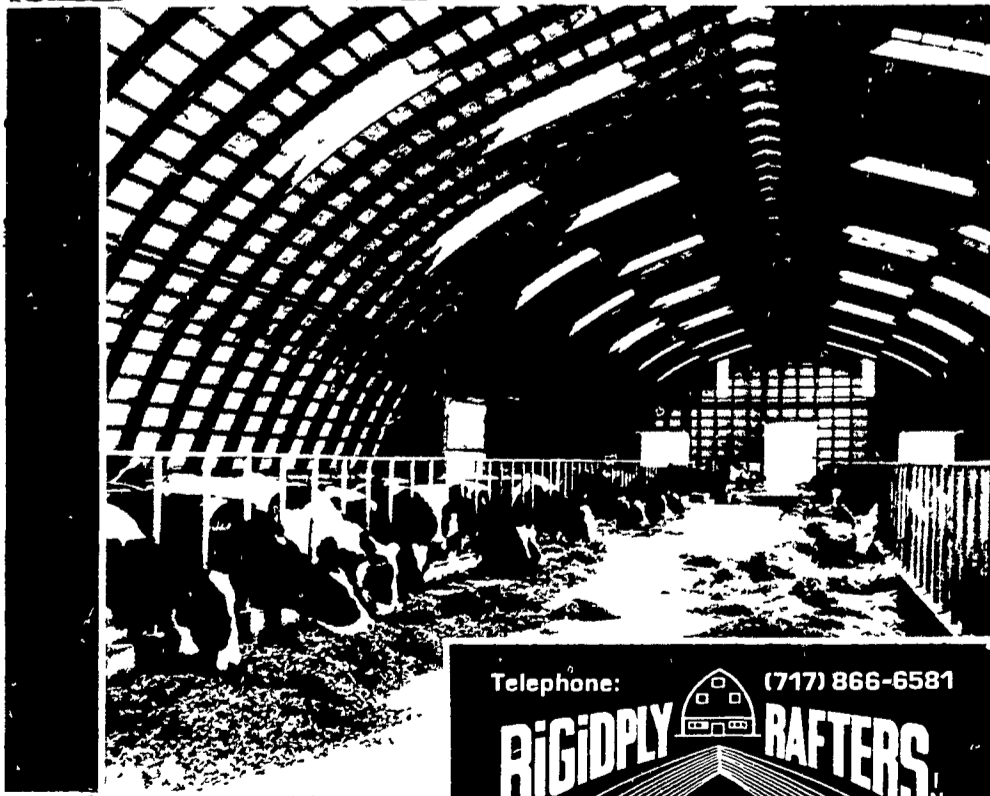
Potential buyers should register Saturday morning, prior to the sale, at the sale office in the southeast corner of Agriculture Hall. Keep in mind that a steer may yield from 400 to 500 pounds of usable meat cuts and a lamb from 40 to 50 pounds. If you're interested in beef, you may want to share a steer with another buyer. Arrangements can be made at the sale to transport and process the animal(s)

purchased. This is an opportunity to buy quality meat and to support the 4-H Livestock Program, a positive force in youth development.



### Laminated Rafters:

The First Choice for Economical Space True Flexibility and Total Satisfaction...



Telephone: (717) 866-6581

**RIGIDPLY RAFTERS**  
MANUFACTURERS of LAMINATED RAFTERS and WOOD ROOF TRUSSES

RICHLAND RD1, Pennsylvania 17087  
OAKLAND RD2, Maryland 21550



## Manheim FFA Chapter thanks fair supporters

MANHEIM — The Manheim Central FFA Chapter would like to recognize those companies and individuals who supported the greased pig contest and 4-H — FFA livestock show and sale held in conjunction with the Manheim Farm Show. All of these people made the week successful.

Buyers and supporters included: Hatfield Packing; Walter Dunlap and Sons, Inc.; Penn Packing; White Oak Mill; Dutch Valley Farms; McCoy Cattle Co.;

Bomberger's Store; Penway Construction; J.M. Hooper, Inc.; McCracken Feed Mill; Jay Witman, Auct.; Hershey Meats; Lancaster Co. Farm Diner; Stonebridge Farms; Abe Hess, Sholtzberger's Farm Equipment, Elmer Murry, Auctioneer; W.E. Kreider, Inc.; J.H. Brubaker, Inc.; Elam Ginder; Groff's Home Dressed Meats; Baum's Bologna; Stiegel Builders; G & G Feed and Supply; John Hooper; Heistand Brothers, Inc.; Vigortone Minerals; Erway's Poultry Service;

Stauffer's Corn Meal; E.E. Shenk and Sons; Walter Heistand; Penndale Farms; and Messick Farm Equipment.



# CASE WILL WAIVE ALL FINANCE CHARGES

through March 1, 1980 on any tractor listed below and purchased from us between October 1, 1979 and December 28, 1979.

**NEW CASE LOW-PROFILE MODELS**  
885, 990, 995, 1210 and 1410

**NEW CASE 2-WHEEL DRIVE MODELS**  
2090, 2290, 2390 and 2590

**ALL USED 4-WHEEL DRIVE TRACTORS,**  
any make, any model (except Case 4490, 4690 and 4890).

**YOU PAY NO FINANCE CHARGES** (if you finance through Case Credit Corp.) until March 1, 1980. The sooner you buy, the more you save

**YOU SAVE ON A TRACTOR, TOO.** Our selection of qualifying tractor models is at its best right now and we're eager to deal high.

### DOING SOMETHING ABOUT IT.



**DEPENDABLE MOTOR CO.**  
East Main Street  
Honey Brook, PA  
(215) 273-3131

**NEVIN N. MYER & SONS, INC.**  
RD1, Chester Springs, PA  
(215) 827-7414

**E. W. BILEWICZ EQUIP., INC.**  
Elmer Rd., Richwood, NJ  
(609) 881-2692

**STOUFFER BROS., INC.**  
1066 Lincoln Way West  
Chambersburg, PA  
(717) 263-8424

**BAER'S GARAGE INC.**  
2407 Marsh Pike  
Hagerstown, MD  
(301) 733-8226

**C. & P. FULTZ EQUIP.**  
RD 1,  
Spring Mills, PA  
(814) 422-8805

**C. H. WALTZ SONS, INC.**  
RD1, Cogan Station, PA  
(717) 435-2921

**BINKLEY & HURST BROS.**  
133 Rothsville Station Rd  
Lititz, PA  
(717) 626-4705

**EDWARDS FARM EQUIP.**  
291 West Moorestown Road  
(Rt 512 Clearfield)  
Nazareth, PA  
(215) 759-0240

**PEOPLES SALES & SERVICE**  
Oakland Mills, PA  
(717) 463-2735

**A. L. HERR & BRO.**  
312 Park Ave  
Quarryville, PA  
(717) 786-3521

**PONIATOWSKI BROS. EQUIP.**  
Rt 31 at Church St  
Flemington, NJ  
(201) 782-3514

**CLAIR J. MYERS**  
Lake Road R1  
Thomasville, PA  
(717) 259-0453

**PAUL SHOYER'S, INC.**  
35 East Willow St  
Carlisle, PA  
(717) 243-2686

**ZIMMERMAN'S FARM SERVICE**  
Bethel, PA  
(717) 933-4114