

Md. dairy cooperative to hold district meeting

CHAMBERSBURG, Pa. - Area members of the Maryland Cooperative Milk Producers will have a chance to exercise their voting powers at the District Eight Annual Membership Meeting Tuesday, Oct. 30, at the Lighthouse Restaurant at 7 p.m.

The 57 member-producers will nominate a director to be ratified by the total membership at the cooperative's annual meeting in March, for a three-year term from March 1980 - February 1983. M. Dice

Statler, the current director, has stated that he will not stand for re-election to the board.

"I will not be running for re-election, but since Maryland Cooperative Milk Producers has such a vital impact upon individual dairy farms as well as the state's total agriculture industry, it is important for the members to select an individual with the ability to guide a multimillion dollar business," Statler said. "I encourage members to contact worthy nominees, so

that the best person can be selected for the responsibility of representing them on the board."

The cooperative's by-laws require that there be at least two nominees in a director election unless the membership in a particular district waives that requirement.

The program, to be kicked off with a dinner, will consist of reports to members on national and local milk production, sales and price trends, and the current status of the Holly Milk

Plant in Carlisle, Pa. In addition, members will review the financial condition of the cooperative, including its operating divisions.

District Eight includes Franklin and Fulton Counties in Pennsylvania. Field representatives for the area are Pete DeBaugh of Boonsboro, Md. and Jay Waybright of Littlestown, Pa.

Ralph L. Strook, business manager of the cooperative, said, "The Annual District Membership Meetings are

extremely important as an information source for members and all are urged to attend."

Maryland Cooperative Milk Producers, Inc., the

largest Maryland-based dairy cooperative, represents more than 1,000 dairy farmers in Maryland, Pennsylvania, Delaware, Virginia and West Virginia.

Start sows early on full feeding

LIBERTYVILLE, IL - Full feeding of sows starting 10 days prior to farrowing will give the benefits of a high fat ration without the problems of handling fat and of poor flowability.

In studies at Allied Mills' Wayne Research and Development Center over the past year, Manager James Hedges also noted full feeding of sows will reduce MMA problems.

The additional energy derived from full feeding will allow the sow enough energy to farrow normally and give excellent milk production, he explained.

In the studies, two sow groups were used - a fat supplemented group and a control group maintained on a full feeding program used for many years. All sows were full fed prior to farrowing and through lactation. The supplemental fat was fed starting seven days prior to farrowing and for one week past farrowing.

The pig survival rate to weaning was the same for both groups.

Hedges said the high fat rations basically increase the energy level to the sow prior to farrowing. This was accomplished in the control group by full feeding (where feed was before the sow at

all times) starting 10 days prior to farrowing.

In this study, the full feeding program resulted in an improvement in pig survival of 8.2% over restricted feeding. Total litter weaning weight also was improved.

After farrowing, Hedges recommends the sow continue to be full fed. A good producing sow can give 18-20 lb. of milk daily so her nutrient requirements during this period are quite high, he added.

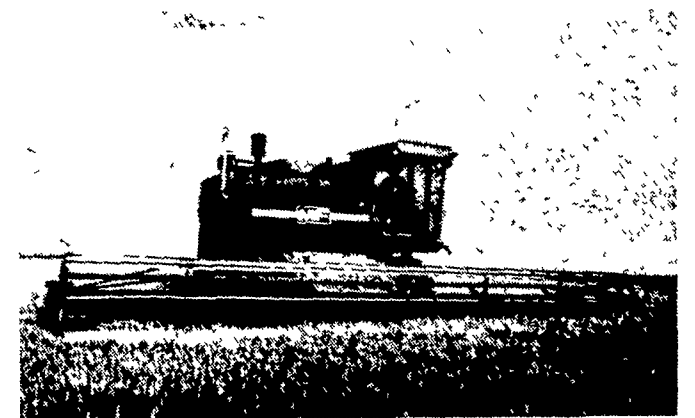
Hedges also pointed out that the pig will have available a more uniform milk supply if the sow is full fed. Many producers currently feed the sow in the morning and at night.

This results in high milk production immediately after the feeding and reduced milk production between feedings, Hedges explained. The pigs then over-consume at times and do not receive adequate milk intake at other times, he noted.

This uneven milk supply predisposes pigs to scours, Hedges said.

"Many producers confuse this so-called milk scours as being too much milk production," he added. "The problem is not too much milk but uneven milk supply."

WHAT'S NEW



30-foot MF Combine Table

30-FOOT M COMBINE TABLE

Massey-Ferguson has introduced a 30-foot Quick-Attach rigid combine table to complement the high productive capacity of the top-of-the-line MF760 combine.

The new 30-foot tables feature 22-inch augers with 10-inch slip clutches. Enlarged spacing between knife and table auger provides smoother and more even feeding. This up-front design feature produces maximum capacity advantage from the 30-foot table in combination with the MF760 combine.

The new table comes equipped with electrically controlled hydrostatic, variable-speed reel drive plus hydraulic table and reel lifts.

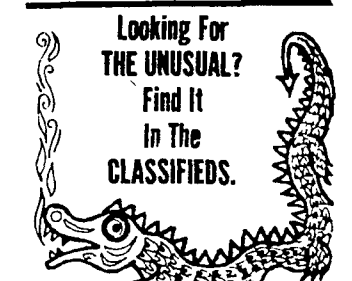
The standard 30-foot reel has five bats, convertible to four or six. An extra row of

six-inch bats can be added to make 12-inch bats for milo.

MF's "U-II" pick-up reel is also available to top off the 30-foot table. This combination heightens operator visibility on crop and cutterbar.

The strong, lightweight "U-II" features flip-over design to reduce wrapping on the ends and at the spider bat joints. "U-II" reels have five bats with #6 wire tines and six-inch spacing for pick-up efficiency and minimum shattering.

Looking For THE UNUSUAL? Find It In The CLASSIFIEDS.



THE SYSTEMS PEOPLE

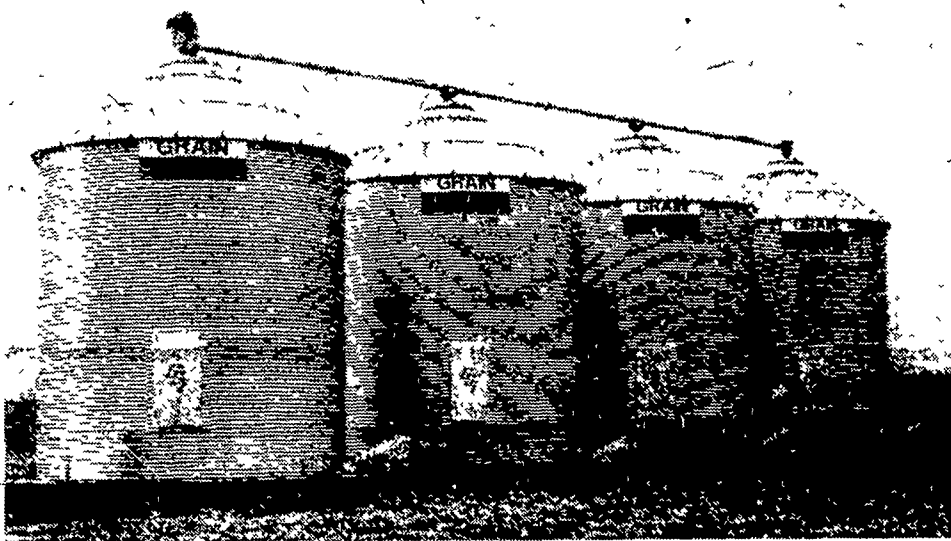
THE MOST VERSATILE GRAIN DRYING, CONVEYING & STORAGE

OCTOBER INVENTORY CLEARANCE SALE ON GRAIN EQUIPMENT

★ Bins In Stock At Old Prices - Capacity 3000 bushel to 10,000 bushel
Other Sizes Available for Prompt Delivery



A GSI ON-FARM STORAGE SYSTEM



FEATURING:

- All galvanized steel with G-90 galvanized coating, including galvanized doors.
- Our steel is A446 Quality or a minimum yield of 40,000 pounds per square inch.
- Walk around steps on top of roof.
- Equipped with safety rings.
- No welding anywhere on roof, prevents rust.
- Slotted holes to raise & lower roof for air movement for drying

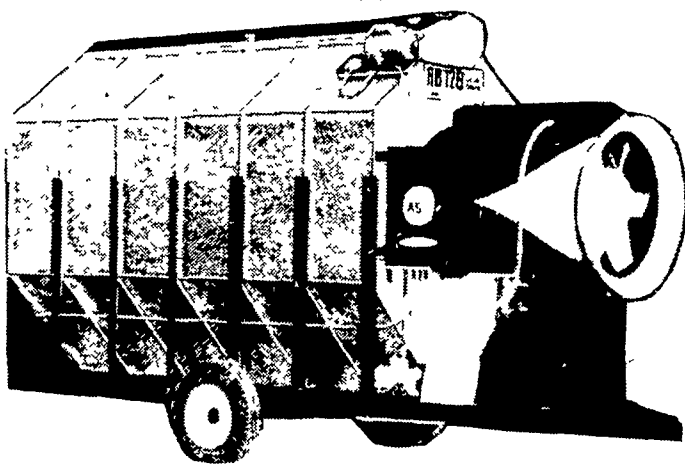


FARM FAN DRYERS

YOU WILL BE SURPRISED WITH THE ECONOMICS OF A FARM FAN DRYER

★ Automatic Batch

- Economical To Buy
- Economical To Operate
- Economical To Maintain

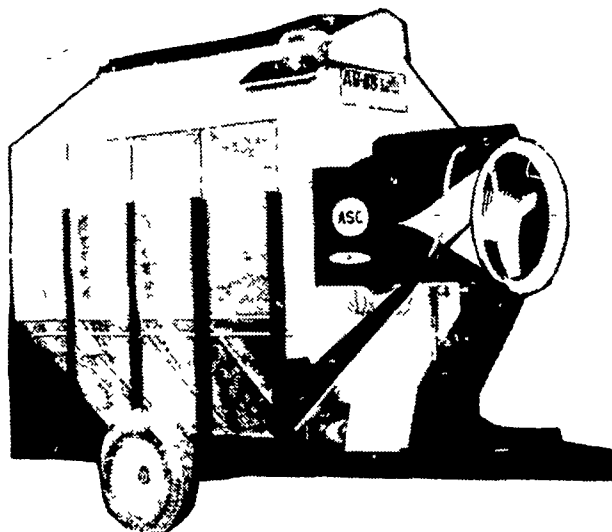


MODEL AB-12B

"Temper Dries" to 310 bu. per hr. or 6200 bu. per day - full heat, 5 points

★ USED DRYER SPECIALS ★

- 1 - PTO Dryer
- 1 - Farm Fan AB12 - 3 phase



MODEL AB-8B

"Temper Dries" to 210 bu. per hr. or 4200 bu. per day - full heat, 5 points

WE STOCK

- | | | | |
|--------------------|-------------------|----------------------|---------------------------|
| • GRAIN BINS | • U-TROUGH AUGERS | • GRAIN SCATTERS | • MOISTURE TESTER |
| • FEED BINS | • FLEX AUGERS | • CHANNEL LOCK FLOOR | • MOTORS, BELTS & PULLEYS |
| • PORTABLE AUGERS | • AUGER FEEDERS | • BIN SWEEPS | • GRAIN CLEANERS |
| • VERTICAL AUGERS | • GRAIN DRYER | • PIPE SPOUTING | • IN BIN STIRRING SYSTEMS |
| • TRANSPORT AUGERS | • AERATION FANS | | |

★ FULL LINE PARTS DEPARTMENT ★ WE SELL, SERVICE AND INSTALL

EMHERR EQUIPMENT, INC.

RD3, Sprecher Road
Willow Street, PA
Lancaster Co.
717-464-3321