

WHAT'S NEW

John Deere 40-80 hp. tractors

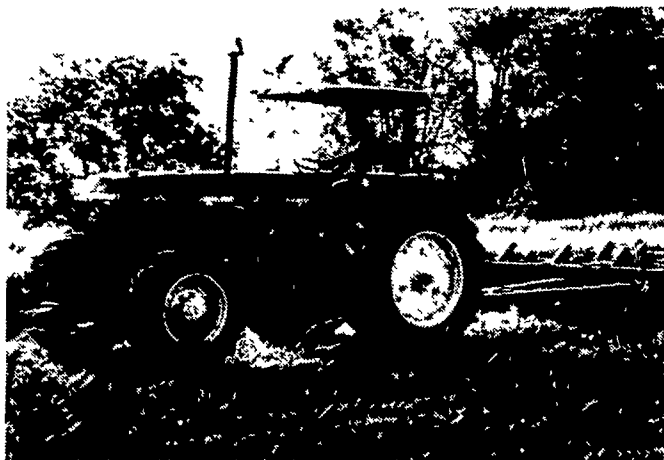
John Deere has upgraded its entire line of 40- to 80-hp tractors, adding one new model and making improvements which increase performance, reliability, and operator comfort and convenience for the four models currently in the line.

The new model is the 80-hp 2940 (factory-observed horsepower at the PTO at 2500 engine rpm), which replaces the 2840.

Improvements in the entire line include:

Optional mechanical front-wheel drive, the first ever offered on John Deere Tractors in this horsepower category, available on the 2940 as well as the 40-hp 2040 and 50-hp 2240. In soft fields, mud or snow, tractors equipped with this option will gain pulling power which rivals 2-wheel-drive tractors with up to 20 percent more rated horsepower. Integrated design of the front-wheel-drive components provides good front-axle clearance while reducing the need for front and rear weighting to maintain balanced weight distribution. The front-wheel drive can be engaged or disengaged on the go, and is equipped with a limited-slip front differential that engages and disengages automatically as needed.

A wide choice of transmission options permits tailoring these tractors for virtually any operation performed by tractors in this power category. The 2940 is available with a new top-shaft-synchronized (TSS) transmission package with Hi-Lo shift providing 16 forward and 8 reverse speeds as standard equipment. On the 2040 and 2240, an 8-speed TSS transmission



is packaged with the optional mechanical front-wheel drive; standard equipment on these and the 60-hp 2440 and 70-hp 2640 is an 8-speed collar-shift transmission which (except on the 2040) can be equipped with hydraulic Hi-Lo shift. Finally, a hydraulic direction reverser is available for the 2240, 2440, and 2640.

Models are powered by 3-, 4-, or 6-cylinder diesel engines with such field-proved features as direct fuel injection, wet-sleeve cylinder liners, bypass cooling, and pressure lubrication of all vital parts. Additionally, these engines have been improved with beefed-up oil pumps, improved lubrication of critical bearings, and specially coated piston rings to improve service life.

The improvements have given the engines and power trains sufficient increased reliability that John Deere now warrants the engine pan, block, head, timing cover, rocker arm cover, and all parts within, and the clutch housings, transmission case, final drive housings, and all parts enclosed within, as well as internal components of mechanical front-wheel

drive. Warranty is provided to the original purchaser for two years or 1500 hours, whichever comes first, from date of delivery, in addition to the regular John Deere agricultural equipment warranty.

Three-point hitch rockshaft capacity has been increased by more than 20 percent on the 2440 and 2640, and both now have longer and 50 percent stronger telescoping draft links.

Operators of these John Deere 40- to 80-hp tractors will sit in a new seat adjustable for individual height, weight, and reach. The seat is tilted back 5 degrees for a more stable ride. It's standard on all models except orchard/vineyard tractors.

Instruments which monitor engine rpm, water temperature, handbrake setting, alternator, engine oil filter, speed, hours, engine air cleaner, fuel level, and front-wheel drive setting are mounted in one central display. Backlighted gauges are easy to read, day or night, in the instrument panel which is isolation-mounted to prolong instrument life.

Models will be available at John Deere dealership this Fall.



Powerlift front-end loader
Position your tractor between the Powerlift support arms, couple the hydraulic hose lines and you're ready to lift, load or level. The new Powerlift loader with quick-mount hitch and built-in support stands mounts effortlessly in minutes. Dismounting is just as easy.

Manufactured by Ag-Tech Industries, New Holland, PA, this new loader is designed for use with Ford, Kubota and most other small tractors. Built for years of trouble-free service, Powerlift heavy-duty construction provides maximum strength with less weight. Box-type members are constructed for minimum deflection under tension and compression. Hydrotouch dual-valve system gives complete control of elevation and bucket tilt.

The new Powerlift loader is available in two sizes; the Model 655 for 2WD tractors and the Model 720 for 4WD units. For more information, contact Ag-Tech Industries, 325 West Main Street, New Holland, PA 17557.

Vertical Nurse Tank
Snyder Industries announces the addition of a 1,650-gallon tank to their vertical nurse/storage tank line. The tank can double as a portable nurse tank and gives greater on-site capacity of liquids for larger operations to help reduce additional re-fill trips.

The 1,650 vertical nurse/storage tank is manufactured with a high density, polyolefin, crosslinked material which makes the tank resistant to cracking, chemicals and corrosion. And each tank is made with rotational molding process which gives

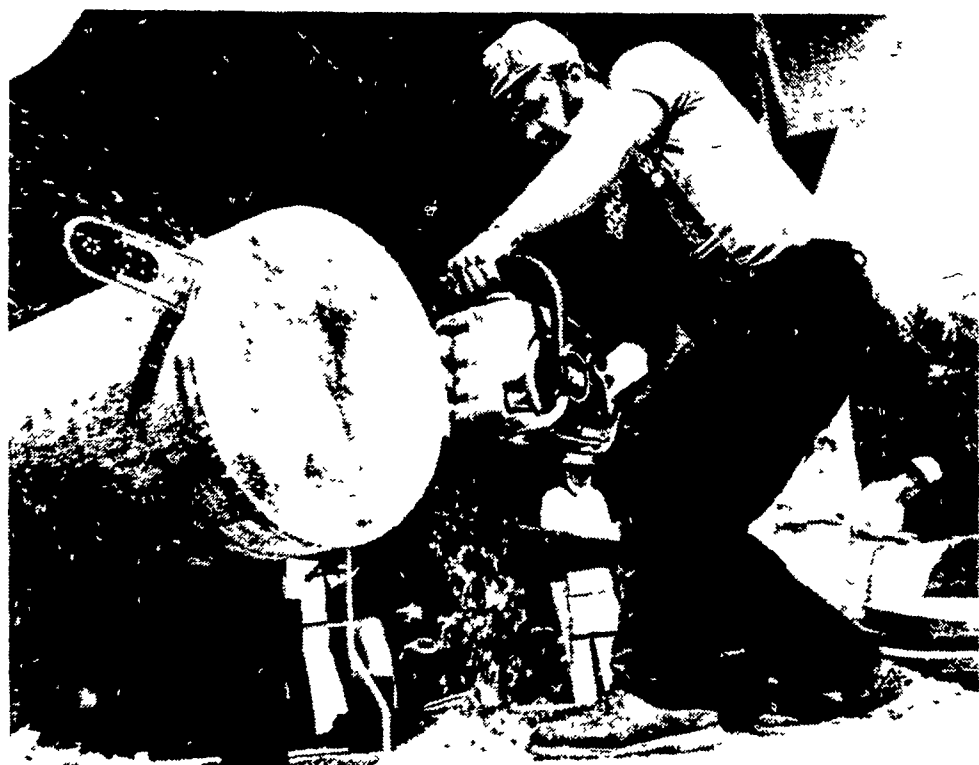
added strength and durability.

A special green translucent tinting and ultra-violet inhibitor help protect the tank and its contents from the sun's damaging rays.

A unique feature on the 1,650 vertical nurse/storage tank is the inverted tie-down lugs. Chain or heavy cable can be easily attached with a special bracket to add extra stability for mounting on truck or trailer.

xxx

If you dislike the odor of fresh paint, you can eliminate it. Just add two teaspoons of vanilla extract per quart of paint, or put a tablespoon of ammonia in a large pan of water and leave it in the room overnight. Even a pail of plain water, left overnight, will reduce paint odors.



Roy Booth of LaGrande, Ore., retains the title of world chain saw cutting champ for the second year.

Chain saw champ clinches title

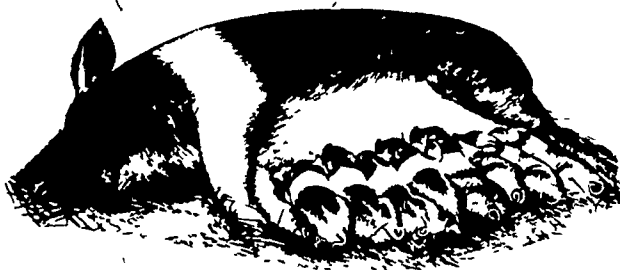
CHARLOTTE, N.C.—Scoring a perfect 10 points in speed-cutting, the last of six events, Roy Booth Sr., 46, LaGrande, Ore., wins his second straight world chain saw cutting championship in the Homelite Tournament of Kings two-day competition. The six-foot, 213-pound Booth defeated Dave Geer, Libson, Conn., 49 to 41, to

earn \$2,500, a record for a chain saw cutting event. Geer, oldest competitor at 54, received \$1,000. Tom Bildeaux, 44, Silver Bay, Minn., edged the surviving international competitor, Bren Canfell, 43, North Rockhampton, Queensland, Australia, 37 to 36, to win the \$500 third-place prize. Nine loggers, including four from outside the United States,

were eliminated in the first round. Other finalists included Jim Taylor, 33, Redding, Calif., 33 points; Ron Johnson, 23, Jewett City, Conn., 32; Hugh Adams, 43, Kalispell, Mont., 30; Alex Bildeaux, 38, Isabella, Minn., 28; Harry Boedecker, 42, Zanesville, Ohio, 26, and Dave Neiger, 40, Luther, Mich., 18.

Nutrena SHOAT-40 MCM

whole-herd
PERFORMANCE
from one
concentrate



Minimum variation. The Shoat-40 MCM formula is changed only when research shows improved performance, or equal performance at lower cost.

Performance Packs - Nutrena TOP HOG Pack, Tasty Mix, Sow-RX Pack, Pig MVP, Sow MVP and Start-N-Go - let you provide "specialized nutrition" while using

Shoat-40 MCM as your only main concentrate.

"Single concentrate" convenience, economy. Purchase, handle and store just one main concentrate.

Use your grain — grain makes up over 80% of your sow rations, 85% of birth-to-market rations on the average.

Non-medicated. You medicate to fit needs



York, PA
Phone 717-843-9033

**Beacon Milling
Company, Inc.**

We're employee owned. That's why we shine.

Available At Beacon Dealers



Nutrena Feeds