

Berks County DHIA Monthly Report

SEPTEMBER 1979

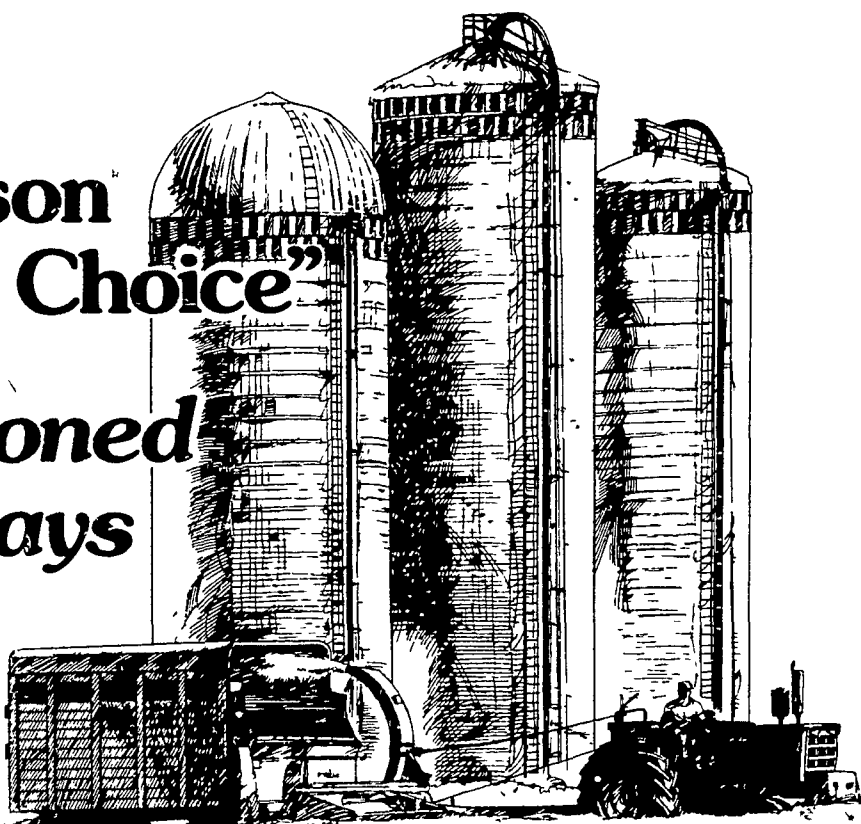
Andrew D Stoltzfus' cow Dianne made 1,021 pounds butterfat to top the county DHIA list for September. Close behind was Bobbi, owned by Kenneth L Stutzman, who produced 1,018 pounds fat for the same period. Top milk producer in the 305 day test was Mark A Wolfskill's Pat which produced 26,960 pounds milk. She made 942 pounds fat. These and other herd records for the month are as listed.

OWNER	BREED	NO. COWS	& DAYS IN MILK	LBS MILK	& FAT	LBS. FAT
Charles Plushanski	B3	98	93	1	57	2.25
A D Stoltzfus	B3	104	91	0	53	2.08
Ch & T Kissling	B3	48	2	89	53	1.90
Junge Farms	B3	38	9	83	1	1.82
E D Leatherman	B3	68	0	95	5	1.81
H G Heck	B3	72	5	90	2	1.77
C B Kulp	B3	67	2	92	6	1.77
N Z Nolt	B3	39	1	88	2	1.77
K L Stutzman	B3	39	5	91	4	1.76
R W Haag	G3	41	6	89	0	1.75
R E Bicksler	B3	42	0	82	9	1.75
K E Hertzog	B3	45	4	83	0	1.75
G E Seidel	B3	27	2	90	9	1.74
Glen High	B3	59	1	77	2	1.73
Nevin E Mast	B3	45	0	93	1	1.71
Linden Loch Holst	B3	44	5	88	5	1.70
John F Snyder	B3	49	7	93	5	1.69
G E Seidel	B3	22	5	88	5	1.69
D Burkholder	G3	91	5	90	0	1.69
M Brubaker	B3	60	0	88	0	1.68
J H Myer	B3	42	6	87	2	1.66
L G Stoltzfus	B3	77	7	88	5	1.64
E C Hoffman	B3	51	1	89	8	1.64
S J Janos	B3	32	7	93	3	1.64
E K Siegfried	B3	61	2	89	6	1.63
J G Stutzman	B3	46	7	92	8	1.63
R C Dreisbach	B3	4	6	85	2	1.63

Lancaster Farming, Saturday, October 27, 1979-117

Roy Hoppes	B3	34	5	87	9	45	3	6	1	63
M A Wolfskill	B3	77	2	90	0	49	2	3	3	162
B L Burkholder	B3	46	0	82	4	44	2	3	6	161
Zahncroft Farm	B3	46	6	93	4	52	6	3	0	160
Mat Mar Farms Inc	B3	86	0	89	5	42	7	3	7	160
R K Dietrich	B3	78	7	88	6	44	6	3	6	160
D & D Martin	B3	34	4	93	4	42	1	3	8	159
M A Wolfskill	B3	74	9	88	6	49	7	3	2	158
W C Adams	B3	76	0	82	9	40	5	3	9	158
Ontelynn Acres	B3	93	9	90	4	41	5	3	8	157
S E Wagner	B3	27	4	92	8	44	0	3	6	157
Show Top Farms	B3	123	0	94	9	45	5	3	4	156
Way Har Farms	B3	97	7	84	8	45	0	3	5	156
Robert Sittler	B3	36	3	90	1	43	5	3	6	156
Herb Top Farms	B3	27	7	89	4	39	3	3	9	155
F M Browns Sons	B3	89	3	85	2	49	9	3	1	155
P & T Werley Jr	B3	105	1	86	7	44	6	3	5	155
C E Hollenbach	B3	49	3	89	0	35	8	4	3	154
Swatara Dairy Farm	B3	82	3	82	1	37	9	4	1	154
Raymond A Seidel	B3	39	5	93	4	41	4	3	7	154
Jaimore Farm	B3	54	9	86	5	41	5	3	7	153
R B Burkholder	B3	39	3	85	4	43	9	3	5	153
W G Howerter	B3	82	9	85	4	43	7	3	5	152
RR Troutman & Sons	B3	102	0	82	6	43	9	3	5	152
BRB Farm	B3	46	5	86	8	40	6	3	7	152
Blue Mtn Academy	B3	119	6	90	4	39	8	3	8	152
Charles W Lamm	B3	91	1	91	0	44	3	3	4	151
H & G Schuler	B3	43	7	84	4	40	2	3	8	151
Calvin Zerbe	B3	34	0	94	0	45	1	3	3	151
Wilmer Dreibelbis	B3	49	0	81	4	40	7	3	7	150
John H Stump	B3	53	2	93	1	43	9	3	4	150

Madison "System of Choice" Old-Fashioned Value Days



Sept. 24 to Nov. 9, 1979

With Madison structures old-fashioned value is still possible. The Madison System of Choice gives you more for your money everyday - puts you into a modern versatile feed processing system for up to \$30,000* less than you might expect.

But right now it's an even better value because we're offering early-order discounts and valuable family gifts with all 1980 Madison structures. Madison* silos for corn silage, Madison Nutri-Matics* for haylage and Madison Grain-O-Matics* for high-moisture grain.

Save hundreds of dollars!

Order any 1980 Madison structure between September 24 and November 9, 1979 for Fall or Winter delivery and get a special early-order discount. It will save you hundreds of dollars, even thousands on the largest Nutri-Matic.

*Compared with glass fused to steel structures of similar capacity.

Making things better for you.



Lancaster, PA
L. H. BRUBAKER
717-397-5179

Ephrata, PA
TOM ZARTMAN
215-267-6814

Silverdale, PA
I. G. AG SALES
215-257-5135

Forksville, PA
JOHN BROWN
717-924-3492

New Providence, PA
DON R. NISSLEY
717-786-7654

Pitman, PA
CLIFF ERB
717-648-3092

Myerstown, PA
SWOPE & BASHORE
717-933-4138

Littlestown, PA
ATLEE REBERT
717-359-5863

Mt. Joy, PA
GALEN KOPP
717-653-1567

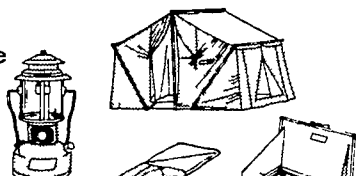
Pottstown, PA
LEINBACH
CONSTRUCTION CO.
215-327-0310

Chambersburg, PA
VALLEY FARM
AUTOMATION
717-264-3814

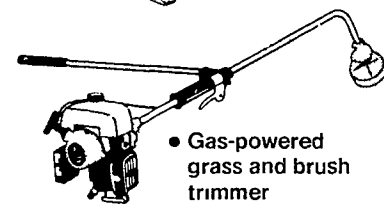
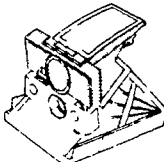
PLUS a valuable family gift!

Choose one of these valuable family gifts if financing for your 1980 Madison structure is approved by November 9, 1979, and we can install the footing before winter sets in. Offer strictly limited to footings installed this Fall! No exceptions.

• Coleman 5-piece camping outfit



• Polaroid SX-70 land camera with Sonar



• Gas-powered grass and brush trimmer

HURRY!

Madison Old-Fashioned Value Days end Nov 9 1979. Call us now!

Milford, DE
BENNETT MACHINE
302-422-4837

Galena, MD
DUDLEY CHANCE
301-928-3834

Monroeville, NJ
HAROLD HURFF
609-358-2565

Frederick, MD
GLADHILL TRACTOR
301-663-6060

Sussex, NJ
WILLIAM SYTSEMA
201-875-5449

Mt. Sidney, VA
BLUE RIDGE
AGRI SERVICE
703-248-1196

Elmer, NJ
GEORGE COLEMAN
609-358-8528

Belvidere, NJ
G. H. BUCHMAN
201-475-2185

Rising Sun, MD
CECIL DAIRY SERVICE
301-758-6923

Ask Us About Our Convenient Leasing Terms

Dealer Inquiries Welcome
717-569-8130

(Turn to Page 118)

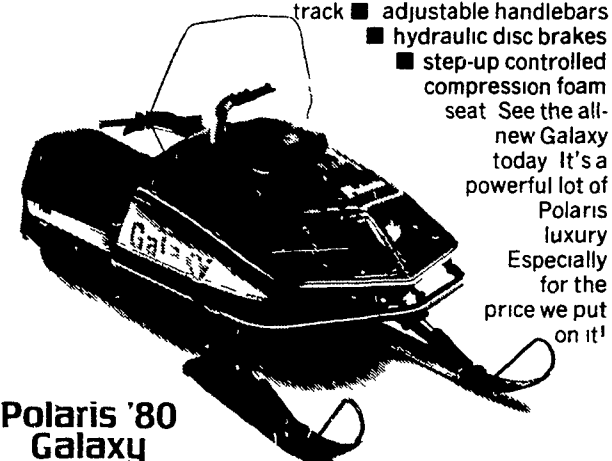
Polaris

QUALITY SNOWMOBILES

This is the one for the two of you.

The new Polaris Galaxy seats two very comfortably. And takes you where you wanna go - - - - - quickly. Features include:

- Choice of 333cc or 432cc twin-cylinder fan-cooled engine
- extra long suspension and track
- adjustable handlebars
- hydraulic disc brakes
- step-up controlled compression foam seat



Polaris '80 Galaxy

FARMERSVILLE EQUIPMENT INC.

RD 4, EPHRATA, PA 717-354-4271
Hours: Mon., Tues., Wed., Fri. - 7:30 to 5:30
Thurs. till 9:00, Saturday till 3:00