

Livestock market and auction news

East Coast Carlot

October 17, 1979

Compared to Monday's close: limited sales prime special fed veal generally steady. Good and Choice boning veal generally steady. Lamb 55 lbs. down generally steady. Boneless beef 90 chem lean weak in limited sales compared to last week's bulk.

VEAL CARCASS

HIDE ON

Prime (Special Fed): 180-240 lbs. 170.00-173.00, generally steady.

BONING TYPE

HIDE ON

Good & Choice

Northeastern Suppliers: 65-75 lbs. 132.00-136.00, bulk 134.00, all mostly steady; 55-64 lbs. 130.00-134.00, bulk 132.00; 45-54 lbs. 128.00-132.00, bulk 130.00; 35-44 lbs. 126.00-130.00, bulk 128.00; 34 lbs. down 124.00-128.00, bulk 126.00.

Inshipped: 70-80 lbs. LTD 139.00, all generally steady; 60-70 lbs. LTD 137.00; 50-60 lbs. LTD 135.00; 40-50 lbs. LTD 133.00; 30-40 lbs. LTD 131.00.

LAMB CARCASS

Choice & Prime 3-4

2 Loads

55 lbs. down 125.00, part loads.

BONELESS BEEF

2 Loads

90 pct chem lean, fresh 134.00.

CURED AND PROCESSED MEATS

2 Loads

Skinned Hams: 16-19 lbs. 78.50-79.00, inc. gen. steady, part loads.

Four States Livestock

Four States Livestock Sales, Inc.

Wed., October 10, 1979

SLAUGHTER: Fed Steers & Heifers No Choice offered. Good Dairy Type to 61.00; Medium to 58.00. Heifers - Good 56.00-58.00; Medium 55.00 Down. Cows - large run. \$2.00 higher. High Yield 52.00-56.00; Average 47.00-51.00; Big Middle 43.00-46.00; Shelly 46.00 Down. Fat Bulls \$2.00 lower. Good 61.00-64.00; Medium 56.00-60.00. Veal Calves mostly steady prices. Choice 104.00-108.50; Good 95.00-103.00; Medium 85.00-

94.00; Farm Hfrs. to 147.50; Farm Bulls to 109.50; Light & Weak 81.00 Down. Sows 300-650 lbs. 25.00-31.00.

STOCKER: 300-550 lbs.

\$2.00-3.00 lower. Few 4-H type steers 98.00-136.00; Choice 87.00-95.00; Good 78.00-86.00; Medium 71.00-76.00; Culls 70.00 Down. Steers 600-850 lbs. Choice 74.00-78.00; Good 69.00-73.00; Medium 68.00 Down. Heifers (All Weights) Choice 77.00-84.00; Good 69.00-76.00; Medium 68.00 Down. Bulls Choice 80.00-86.00; Good 72.00-79.00; Medium 71.00 Down. Springing Heifers to 775.00. Pigs, Hd. \$1.00 lower. 20-30 lbs. 7.00-13.00; 40-60 lbs. 14.00-19.00. Shoats by Lb. to 31.00. Slaughter Hogs 50 cents to 1.00 lower. One lot at 36.75; 200-230 lbs. 34.75-35.85; 240-260 lbs. 35.00-35.50; 180-195 lbs. 33.00-34.50.

Joliet Cattle

Joliet, Illinois

October 18, 1979

CATTLE: Friday through Wednesday's salable receipts 4,100; 5 days last week 4,965; same period a

year ago 6,426. Trading slow for the week. Slaughter steers closed the week 2.00-3.00 lower, instances 3.50 lower than Wednesday of last week. Slaughter heifers ended the week mostly 1.50 to 2.00 lower. Cows closed the week 1.00 to instances 2.00 lower.

SLAUGHTER STEERS: Mixed high choice and prime 3-4 1150-1300 67.00-67.50, 1 load 67.75 Monday; 65.50-65.75; 4 loads 66.00 Wednesday. Choice 2-4 1050-1300 65.00-67.00 Monday; 64.00-65.50 Wednesday. Mixed Good and Choice 2-3 1000-1250 64.00-65.00 Monday; 63.00-64.00 Wednesday.

SLAUGHTER HEIFERS: Mixed Choice and Prime 3-4 900-1100 65.75-66.00; 1 load 66.25 Monday; 64.75-65.00; 1 load 65.50 Wednesday. Choice 2-4 900-1200 64.00-65.50 Monday; 63.50-64.75 Wednesday. Mixed Good and Choice 2-3 800-1000 62.50-64.00 Monday; 62.00-63.50 Wednesday.

COWS: Cutter & Utility, few commercial, 1-2 47.00-50.00, few 52.00 Monday 46.00-49.00 Wednesday. Utility & commercial 3-4 44.00-47.00 Monday.

St. Louis Cattle

October 18, 1979

Receipts this week 5,200
Week ago 4,800
Year ago 6,200

Compared last week's close, slaughter steers 2.00-3.50 lower, most decline on choice and mixed choice and prime. Slaughter heifers 1.50-2.00 lower. Cows 3.00-4.00 lower. Bulls steady. Slaughter supply fully 50 percent steers, near 30 percent heifers and 15 percent cows.

Declines late last week and early this week in wholesale beef prices appeared to be the major bearish factor contributing to the price downturns for most slaughter classes.

SLAUGHTER STEERS: Mixed choice and prime 2-4 1050-1300 lbs. 65.00-66.50, mostly 65.00 after Monday; mixed choice and prime 3-4 1125-1200 lbs. Monday 65.50-66.00, with load 1325 lb. 3-4, few 5's 65.00. Few part loads comparable grade 1000-1100 lb. 4's 63.00-63.50 Tuesday. Scattered loads and lots

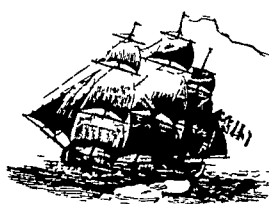


THE OLD FARMER'S ALMANAC

OCT. 22-28, 1979

Helter-skelter, look for shelter.

Apple cider at its best now The charge of the Light Brigade took place this week in 1854 (Oct 25) First quarter of the moon Oct 28 Average length of days for the week, 10 hours, 35 minutes Mainland China admitted to U N Oct 25, 1971 Better a full barn than a full bed.



Ask the Old Farmer: Could you explain the following old saying "Hurry back, the latch string is always out" K T, Alexandria, La

Anciently, and in this country particularly, door-latches were on the inside of the door and were lifted by pulling on a string that passed through a hole in the door to the outside. When the occupants did not want company, they pulled the string in, but when company was welcome, the string was left hanging out

Home Hints: To cure insomnia, swallow 1 teaspoon of lemon juice at bedtime

OLD FARMER'S WEATHER FORECASTS

New England: Rain, heavy inland, to start, sunny and very warm mid-week until week's end

Greater New York-New Jersey: Rainy and warm through mid-week, then clearing, very warm, by week's end

Middle Atlantic Coastal: Week begins with heavy rains, then clear and very warm mid-week, intermittent rains, cooler, by weekend

Piedmont & Southeast Coastal: Mild, with heavy rains west, to start, clear and pleasant mid-week through weekend

(All Rights Reserved Yankee Inc., Dublin N H 03444)

choice 2-3 1075-1150 lbs. 66.25-66.50 Monday, bulk choice 2-4 950-1250 lbs. 64.00-66.00, late 64.00-65.00. Mixed good and choice 2-3 900-1200 lbs. 63.00-65.00, late 63.00-64.00. Good 2-3 900-1100 lbs. 60.50-63.00. Few lots standard and good 2-3 1150-1250 lb. Holsteins 60.00-60.50. Couple lots standard 2-3 1200-1500 lb. Holsteins 56.50-58.50.

SLAUGHTER HEIFERS: Mixed choice and prime 2-4 900-1050 lbs. 63.50-64.50. Choice 2-4 800-1050 lbs. 62.50-64.50, late 62.50-63.50. Mixed good and choice 700-900 lbs. 61.00-63.00. Good 2-3 700-950 lbs. 59.00-61.50.

COWS: Late utility and commercial 2-4 44.00-47.00. Boning utility 1-2 47.00-49.00. Cutter 1-2 44.00-47.00. Canner and low cutter 1-2 41.00-44.00.

BULLS: Yield grade 1-2 1050-1700 lbs. 57.00-62.00, individual yield grade 1 1800 lbs. 63.00.

FEEDERS: (Including around 2000 at the regular Thursday auction.) Feeder steers unevenly 2.00-5.00 lower. Feeder heifers weak to 3.00 lower. Receipts mainly medium frame no. 1 muscling 350-700 lb. steers and heifers.

FEEDER STEERS: Medium frame no. 1 muscling small lot 245 lbs.

39.25, 325-400 lbs. 84.50-89.00, 400-500 lbs. 79.50-87.75, 500-600 lbs. 76.75-86.50, 600-700 lbs. 74.50-80.75, fleshy 825-1050 lbs. 64.50-69.00.

FEEDER HEIFERS: Medium frame no. 1 muscling 300-400 lbs. 74.00-83.25, 400-500 lbs. 70.00-77.00, 500-600 lbs. 66.75-74.25, 600-650 lbs. 63.50-69.50.

STOCK COWS: Small lot medium-aged 820 lbs. 60.75.

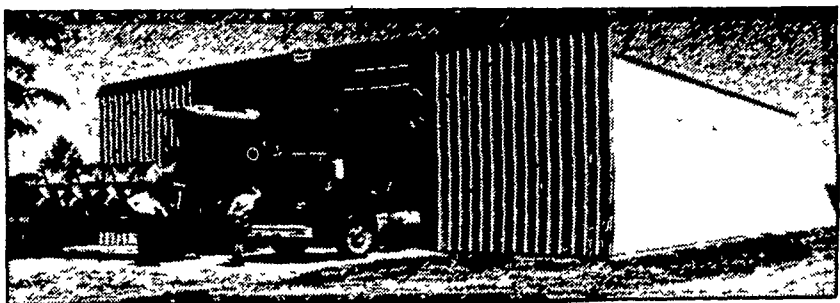
New Holland Horse

Monday, October 15 New Holland Sales Stables

Reported receipts of 321 head of horses, mules, and ponies. Market steady with last week's market.

Tennessee Saddlebred driving horses, 750-1300; Tennessee Saddlebred driving horses, 450-1500; Local driving horses, 275-1035; load of riding horses, 250-425; better horses, 475-625; one pair of 3-yr old mules 2450; lightweight, 250-400 heavywieght, 450-550; mare ponies, 20-60; colts, 10-20; geldings, 20-50; larger ponies, 100-175.

BUTLER CLEAR SPAN BUILDING



FARMSTED I

FREE ACCESSORY ALLOWANCE NOW ON ALL BUTLER BUILDINGS

30'x50'x11'

LESS THAN \$4000*

FARMSTED I GALV ROOF & WALLS 16'x10' Double Slide Door

40'x50'x14'

LESS THAN \$5000*

FARMSTED I GALV ROOF & WALLS 20'x13' Double Slide Door

50'x50'x16'

LESS THAN \$7000*

FARMSTED I GALV. ROOF & WALLS 24'x15'7" Double Slide Door

60'x50'x16'

LESS THAN \$8500*

FARMSTED I GALV ROOF & WALLS 30'x15'3" Double Slide Door

*ALL BUILDINGS F.O.B. ANNVILLE, PA. (Buildings not equipped as shown)

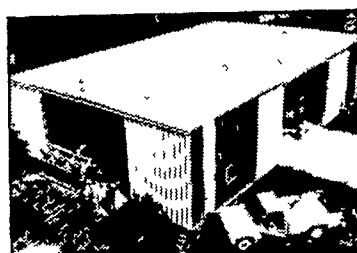
*VARIOUS SIZES HEIGHT & WIDTH AVAILABLE

... Special Grain Storage Buildings Available

Prices Based On Independant Survey of Agri-Builders Price Could Vary With Each Agri-Builders

CALL YOUR BUTLER AGRI-BUILDER TODAY

Beatty & Nelson Contractor	717-677-9310	O A Newton & Son Co	302-337-8211
C & M Sales Inc	717-253-1612	Royer's Farm Service	717-837-3201
A E Engel, Inc	609-983-4404	D E Smith Inc	717-436-2151
Knoxville Construction	814-326-4188	Glenn M Stahlman	301-777-0582
Katterlin Sales & Service	814-438-3180	Tap Enterprises Inc	215-929-2553
Greenside Contracting	301-472-9161	Temco Parts Co Inc	301-778-4454
Orville Mack	215-759-1331	Tri County Agri-Systems	609-467-3174
Leroy E Myers Inc	301-582-1552	Tri State Marine Dist Inc	301-867-1447
Al Maurer	717-864-3135	Walter J Construction	717-392-8280
W R Moody Contractor	412-872-6804	Glossner's Concrete Service	717-962-2564



FARMSTED II AND



AG-MASTER 2:12

For more info. on buildings advertised by our A/B's, please mail to:

P.E. HESS, BUTLER MFG. CO. Box 337, Oxford, PA 19363

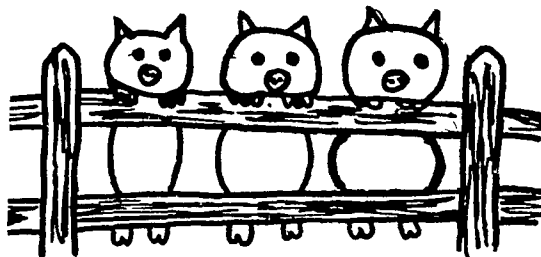
Name _____
Address _____
City _____
State _____ Zip _____
Phone _____ (include area code) LF

SOYBEAN ROASTING ON YOUR FARM

DON'T WASTE IT — ROAST IT

This little piggy went to market,
This little piggy stayed home,
This little piggy had...

ROASTED SOYBEANS



Make higher profits from all grains, roasting improves TDN, destroys molds and retards toxins and removes moisture.

CUSTOM GRAIN ROASTING DONE IN PA. AND SURROUNDING STATES

DALE L. SCHNUPP

RD 6, Lebanon, Pa. 17042 Ph: 717-865-6611

ALLEN SUMMERS

RD #2, Box 67, Rising Sun, MD 21911
Phone: 301-658-6103

