

Now is the time

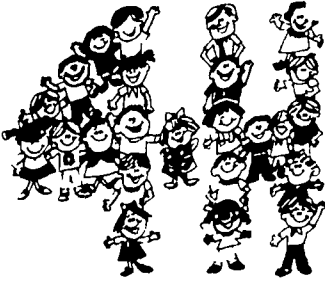
(Continued from Page 10)

the local veterinarian is the best method of learning of the exact infection. Body lice are very common and before the hair coats gets much heavier, animals should be dipped, sprayed, or dusted. Parasites are hard on animals and hard on bank accounts.

TO BEWARE OF CORN PICKERS

The corn harvesting season presents a time when farm accidents have happened in the past. In most cases it is not the fault of the machine that causes the trouble, it is the operator. Too many of us do not follow the manufacturer's directions and try to adjust or clean the picker when in operation. This is a definite

"NO-NO" if there ever was one. There are too many farmers who have learned the wrong way. Never take the chance of trying to clean a plugged corn picker or harvester when in operation. Yes, I know you know exactly how to do it when running the machine - but you may not always get away with it. Do be careful.



WASHINGTON, D.C. — Foreign investors hold an interest in about 4 million acres of U.S. agricultural land, according to a preliminary data examined by the U.S. Department of Agriculture and announced here today by Secretary of Agriculture Bob Bergland. The review indicates foreign owners hold less than one-half of one percent of all private U.S. agricultural land. The estimate is based on a preliminary review of 4,500 reports filed as of September 1 by foreign investors under the Agricultural Foreign Investment Disclosure Act of 1978. Secretary Bergland said distribution patterns indicate that foreign ownership is heavily concentrated in the South and West, although foreign agricultural land holdings were reported in all 50 states. Georgia, South Carolina, and Tennessee

account for 27 percent of all foreign-owned acreage, he said.

From the data examined so far, investors from the United Kingdom, Luxembourg, West Germany and Canada hold 72 percent of all foreign-owned land reported.

As of Sept. 1, over 5,000 reporting forms had been received in Washington, D.C. Of these, 3,000 reports, accounting for 2,687,828 acres, were analyzed by Department's Economics, Statistics, and Cooperatives Service. The other reports are still being processed.

Under the law, foreign owners of U.S. agricultural land as of February 1, 1979, were required to file a report with the Department by August 1. Those who acquired or disposed of U.S. agricultural land after Feb. 1 are required to file within 90 days.

They must file with the Agricultural Stabilization and Conservation Service office serving the county where the land is located.

Failure to report, or filing late or misleading reports, can result in penalties of up to 25 percent of the fair market value of the owner's interest in the agricultural land.

All foreign individuals, governments, or legal entities created under the laws of, or having their principal place of business in, a foreign country are required to file. In addition, all U.S. legal entities in which foreigners hold 5 percent or more interest are required to report their agricultural land holdings.

The law defines agricultural land as all land used for agricultural, forestry, or timber production. This includes land in agricultural use when purchased as well as land later converted to agricultural use. Tracts smaller than one acre, which produce less than \$1,000 worth of gross agricultural sales a year, are exempt from the reporting requirement.

EASY

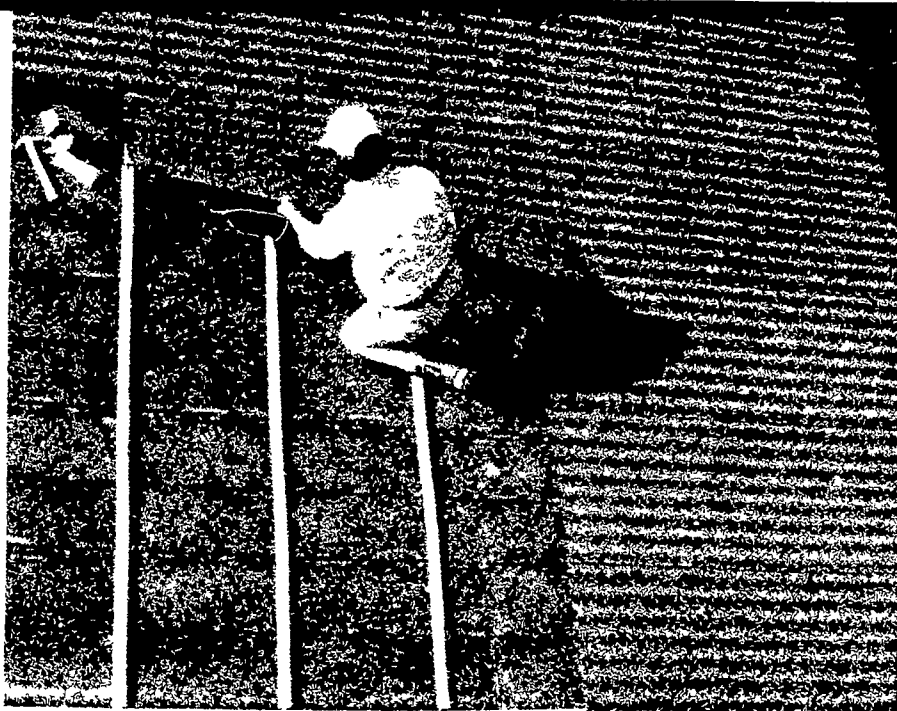
That's how it is to roof with Onduline.

Easy to work with Easy to cut and figure. Easy to install

That's why more and more farmers are roofing with this revolutionary new discovery Onduline is a corrugated fibrous material impregnated with asphalt for strength and durability. Yet unlike traditional asphalt roofing, Onduline is lightweight, easy to handle and flake-proof. And unlike aluminum and steel, Onduline doesn't rust, corrode or oxidize. Best of all, Onduline comes with a 25-year warranty against leaks *

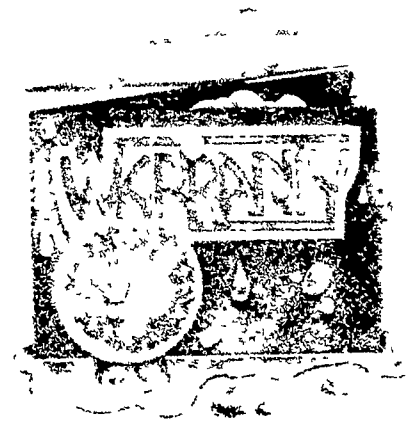


The roofing you've been waiting for. But now that it's here, could you put it up yourself? Easy. As easy as putting Onduline Supersheet™ right over the old roof, using either nails or screw fasteners - whichever you prefer. For new roofs, it's as easy as a good set of instructions, a saw, and a hammer or power screwdriver. The 6'7" sheet length is convenient to work with, and no decking is necessary.

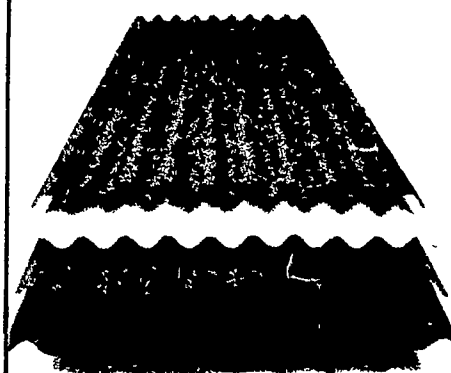


Onduline comes in four maintenance-free baked on colors (including silver to blend with your existing buildings). Ask your building supply or farmers co-op. And if you don't have time to do it yourself, ask your contractor. Either way, you'll find Onduline comes with a price and a performance that's easy to take.

Supersheet Specs: Length of sheet 6'7" Width 46 1/4" Material thickness 1/8" Overall profile 1 5/16" Smooth painted sheets weigh 18 lbs each and are packed 150 per pallet. Granulated sheets weigh 24 lbs each and are packed 100 per pallet.



*The terms of this 25-year warranty are in the application form available from all authorized Onduline dealers.



Onduline

"When the nail goes in, the warranty goes on."

The terms of this 25-year warranty are in the application form available from all authorized Onduline dealers.

Onduline is available at all 17 locations of The Lumber Yard

The Lumber Yard
215 S Phila Blvd
Aberdeen, Md 21001
2069 28th St, S W
Allentown Pa 18103
722 Bel Air Road
Bel Air Md 21014
428 E North St
Carlisle, Pa 17013
Wayne Avenue
Chambersburg, Pa 17201

27 N Stratton St
Gettysburg Pa 17325
316 Juniper Lane
Hanover Pa 17331
2810 Paxton St
Harrisburg, Pa 17111
Wilson Blvd & Pope Ave
Hagerstown Md 21740
265 W Chocolate Ave
Hershey, Pa 17033
1236 E Main St
Annville, Pa 17003

1411 N Queen St
Martinsburg, W Va 25401
Box 156
Stewartstown, Pa 17363
Park & Madison Sts
Waynesboro, Pa 17268
1021 State St
Lemoyne, Pa 17043
Gillespie Drive
York, Pa 17404
Stefko Blvd & Pembroke Rd
Bethlehem, Pa 18000

Here's how much land foreign investors hold

Lancaster Co. livestock judging takes honors

LANCASTER - Congratulations to the Farm

Calendar

(Continued from Page 10)

meeting, 6:30 p.m., at the Historic Strasburg Restaurant.

Adams County Holstein Dairy Banquet, 7 p.m. at the McSherrystown Fire Hall.

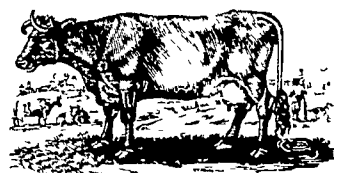
Thursday, October 26
Lancaster County Conservation District, 1 p.m., at the Cloister Restaurant, Main Street, Ephrata.

Friday, October 27
Duck season opens in Lake Erie zone. Statewide opening not until October 31.

Lancaster County 4-H Livestock Judging Team, which is also the State team, for placing second out of 17 teams recently at the Eastern National Livestock contest in Timonium, Maryland, and for placing fifth at the Virginia State Fair in Richmond.

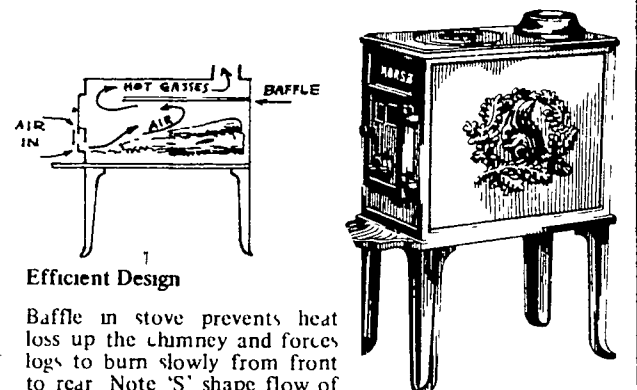
Members consisted of Deborah Greider, Columbia; Barbara Herr, Narvon; Wayne Hess, Conestoga and Mary Longenecker, Lititz.

Best wishes go with them as they compete in their next contest on November 7 at the Pennsylvania Livestock Exposition.



FOR WARMTH OF BODY & SPIRIT...

morsø



Efficient Design

Baffle in stove prevents heat loss up the chimney and forces logs to burn slowly from front to rear. Note 'S' shape flow of heat and gases.

Most Models in Stock for Immediate Delivery

Bowman's Stove Shop

R.D. 3, Napierville Road
Ephrata, PA 17522

Follow the signs from the light at Hinkletown

Tues., Wed. Sat. 9 - 5
Thurs., Fri. 9 - 9

Monday - Appointment Only



717-733-4973
Financing Available

