

Metal building does double duty on farm

As the American farmer tools up for the 1980's, he faces many of the tough financial problems encountered by the urban businessman. One of them could be deciding on a replacement for that old, weathered barn which has seen its better days.

If he's like many other farmers today, he will replace the traditional wooden structure with a metal building. These metal structures are not new to American agriculture.

Throughout the farmlands, hundreds of metal grain bins, storage sheds

and other structures dot the landscape.

The technology of metal building systems has advanced to where metal buildings can be adapted to many other uses. As his seasonal needs change, the farmer can easily use a metal building for storing grain and equipment.

The durability and security offered by metal buildings makes them worthwhile investments for housing tractors, combines and other pieces of expensive equipment.

Time and money saved
Time is money, and

nowhere is this more true than on the farm, especially during planting and harvesting. So it is not surprising that many farmers find room in metal buildings to set up a machine shop for equipment maintenance and repairs.

The concept of a dual-purpose farm building is an increasingly popular one. Rapid construction and design flexibility enable the farmer to find the most value for his dollar in a metal building.

Typical of these structures is a 7,560 sq. ft. metal building that went up in

seven days near Nevada, Iowa. With its 16' sidewalls, the unit has a 63,000 bushel grain storage capacity.

When doing double duty, the building can be set up to store 25,000 bushels with room for a 60' x 70' shop area.

The building owner designed the machine shop in the front section of the building, with a wall divider between front and back. Also in the front is an 11' x 11' office and small lavatory.

The entire front section is heated, and the ceiling is lined with 3" fiberglass insulation and 6" fiberglass

batts behind the liner.

Translucent panels along each sidewall provide lighting during daylight hours.

Floor is reinforced

The entire building is set on a 6" thick reinforced concrete floor. Frost footings around the building are 42" high and 8" thick.

Not only is the building secure from rain and snow, it is also bird and rodent-proof. It will hold up very well against fire and strong winds.

Not to be overlooked are the clear spans possible with metal buildings. Access doors as large as 40' wide and 15' high are common.

The Nevada, Iowa building has a front and side overhead door. Both can be blocked with temporary bulkheads when the area is used for grain storage.

The side of the building has a 24' x 14' double sided door through which grain is augered.

Another side door, 18' x 14' and a 24' x 16' front door provide plenty of room for

moving the biggest machinery into the building. Components pre-assembled Speed of construction, lower initial cost and reduced maintenance have made metal building systems a viable alternative to conventional farm buildings.

Meat building manufacturers provide pre-cut, pre-punched and pre-assembled components and systems that can be erected in about two-thirds the time required to construct ordinary buildings.

For further information on metal building systems, write to the Metal Building Manufacturers Association, 1230 Keith Building, Cleveland, OH 44155.

xxx

Should a recipe call for hot milk, remember this does not mean that milk needs boiling. It means simmering temperature (185°F.) which is easy to note by small bubbles forming around the edges of the pan.

Lapps host

(Continued from Page 144)

One of the primary purposes of this nine-week trip was to see the world plowing championships held this year in Ireland, Caroline's native country. Winter enters plowing contests in New Zealand, but says the best he has done was third in the New Zealand finals three years ago. Nevertheless, he explains, "It's nearly always the same blokes in the contest, so we know them."

They spend nearly a month in Ireland, visiting Caroline's relatives, but encountered no individual difficulties despite the tensions of that country. They also visited England, and Wales and in this country visited a relative in New Jersey before coming to the Lapps. From Penn-

sylvania they will travel to Canada, again to stay with friends.

When the Winters return to New Zealand, it will be summer and time to plunge into their sheep shearing. But with their homestead being well-cared for Winter said, "Everyone should travel like this." They have been blessed with friends and relatives who have enabled them to really get to know life in the areas they visited.

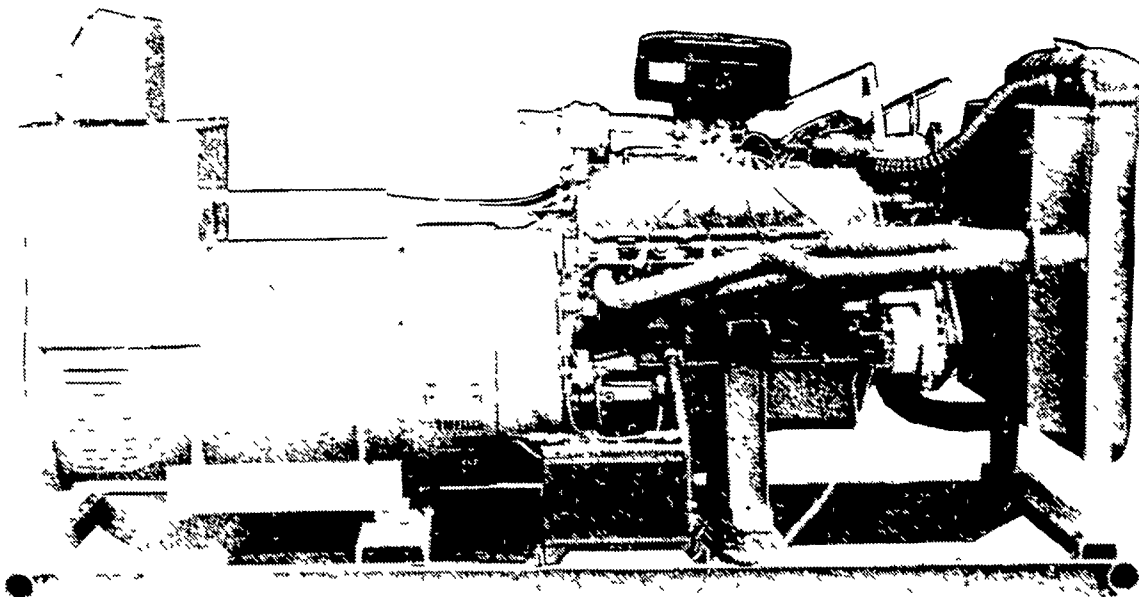
For the Lapp family, it was an opportunity to return the hospitality extended to David many years ago by 13 New Zealand families who let him be a part of their way of life for six months. The visit helped cement a bond between two families half a world apart.

INTRODUCING... A New Concept In AUTOMATIC GENERATORS MAXI-POWER NOW HAS GENERATORS THAT ARE WOUND SINGLE PHASE FOR HARD STARTING MOTORS



IDEAL
FOR:

CHICKEN, HOG or VEAL OPERATIONS



WHAT ARE THE ADVANTAGES?

- ★ Put all your winding to work for you
- ★ 50% more single phase motor starting ability
- ★ Built in voltage - frequency built up characteristics
- ★ Generator is always balanced
- ★ Inherent voltage regulation
- ★ Voltage regulator is maintenance free compared to solid state regulators
- ★ Will start 1 hp per kw class F motors
- ★ Frequency is always balanced versus 3 phase units used on single phase, with no problem on solid state dimmers, etc.

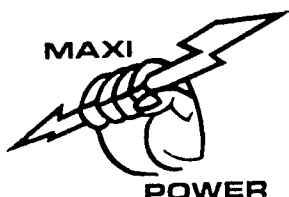
— THE ORIGINATOR OF AGRICULTURE SWITCH GEAR —

MAXI-POWER GENERATORS

330 FONDERWHITE ROAD, LEBANON, PA 17042
LEONARD MARTIN CO. 717-274-1483

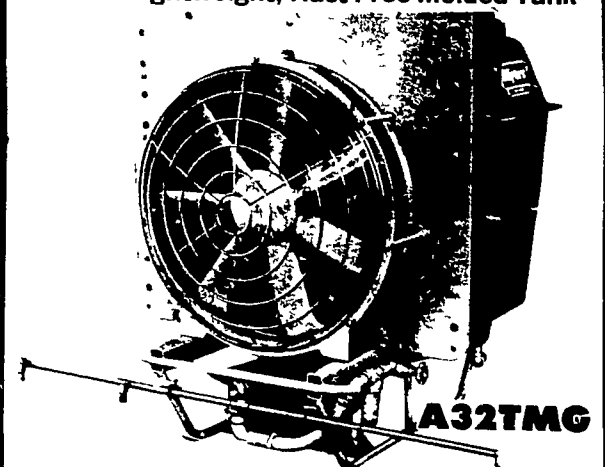
Radio Dispatched Trucks

24 Hour Service



Myers MITY-MIST ORCHARDS • ROW CROPS TURF • VINEYARDS

... with Lightweight, Rust Free Molded Tank



- Compact, 3 point Hitch PTO Air Sprayer.
- Multi-purpose chemical applicator for Parks, Golf Courses, General Farming, Orchards and Vineyards.
- Multi-use Design Cuts Cost in half.
- Big Piston Pump offers Full Range from 20 to 500 P.S.I. and 12 GPM.

Lancaster County's Only Dealer
Specializing In Sprayer Sales & Service

LESTER A. SINGER

Ronks, PA

Ph: (717) 687-6712

Evenings & Saturdays - 717-687-7116