

Livestock market and auction news

Joliet Cattle

Joliet, Illinois
October 11, 1979

CATTLE: Friday through Wednesday's salable receipts 5,000; 5 days last week 4,424; same period a year ago 5,646. Trading slow on Monday; turning active early Wednesday; closing slow on Wednesday. Mixed high choice and prime steers

closed the week 1.00 lower than Wednesday of last week. Good to average choice steers closed the week 1.00-1.50 lower than Wednesday of last week. Slaughter heifers closed the week 50 to 1.00 lower. Cows steady to firm.

SLAUGHTER STEERS: Mixed high choice and prime 3-4 1100-1300 lbs. 67.75-68.25 Monday; 68.50; 2 loads 69.00; 2 loads 69.25; 1 load predominately 4-5 1336 lbs. 68.00 Wednesday. Choice 2-4 1000-1300 lbs. 66.50-57.75 Monday; 67.00-68.00, few late

sales 66.50 Wednesday. Mixed good and choice 2-3 1000-1250 lbs. 65.50-66.50 Monday; 66.00-67.00 Wednesday.

SLAUGHTER HEIFERS: Mixed choice and prime 3-4 950-1100 lbs. 66.00-66.25 Monday; 66.50-66.75 Wednesday. Choice 2-4 900-1050 64.00-66.00 Monday; 65.00-66.50 Wednesday. Mixed good and choice 2-3 800-1000 lbs. 63.00-64.50 Monday; 63.50-65.00 Wednesday.

COWS: Cutter & utility, few commercial, 1-2 49.00-51.50; utility & commercial 3-5 45.00-49.00.

Shenandoah Valley Livestock

Harrisonburg, Va.
October 6, 1979

STOCKER, FEEDER, AND SLAUGHTER CATTLE: Good Light Steer Calves 98.00 to 102.50; Medium 93.00 to 98.00; Plain 88.00 and down; Good Heavy

Steers 83.00 to 88.50; Medium 78.00 to 83.00; Plain 73.00 and down; Holstein Steers 44.00 to 63.50; Good Light Heifer Calves 72.00 to 77.00; Medium 67.00 to 72.00; Plain 62.00 and down; Good Heavy Heifers 67.00 to 71.00; Calves 62.00 to 67.00; Plain 57.00 and down; Slaughter Cows 47.50 to 56.75; Utilities

41.00 to 47.25; Cannors & Cutters 40.00 and down; Milk & Stock Cows 775.00 and down; Stock Bulls 52.00 to 68.00; Slaughter Bulls 58.75 to 64.00.

CALVES: Veal Calves 101.00 and down; Baby Calves 117.50 and down.

SHEEP & LAMBS: Choice Blue O 61.75; Good Red O 57.75; Feeder Lambs 69.00 to 71.50; Slaughter Ewes 22.50 and down; Stock Ewes 46.00 and down.

HOGS: Top 35.00; Medium 32.75; Sows 25.00 to 30.00.

Charolais feeder calf sale slated

BELLEVILLE - Approximately 100 head of Charolais feeder calves will be sold at 7p.m. on Thursday, October 18 at the Belleville Livestock Market. The sale will be sponsored the Pennsylvania Charolais Association with many top herds represented.

All animals have been graded by Cliff Orley of Lebanon, RA. The auctioneer will be Mark Gluck.

For further information contact Ray Bratton, 717-899-6282.

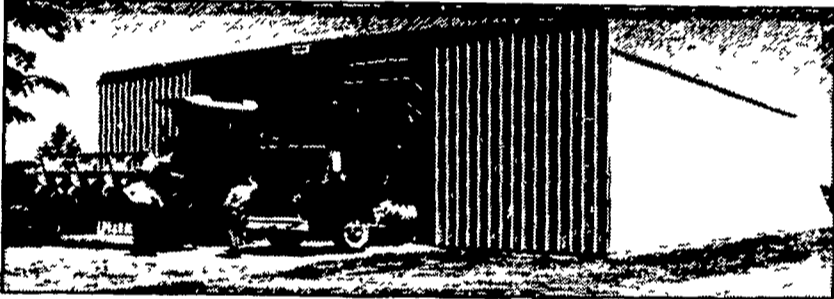
POWERFUL!
Kubota mid range diesel tractors give you maximum pull, push, and lift

KUBOTA FARMERSVILLE EQUIPMENT INC.
RD4 EPHRATA, PA
717-354-4271

HARVEY Z. MARTIN HAY AND STRAW SALE
WILL BE DISCONTINUED UNTIL FURTHER NOTICE. HOWEVER, WE WILL STILL BUY HAY & STRAW PRIVATELY AND ON ORDERS.
For More Information
Phone: 215-445-5303

Vintage Sales Stables, Inc.
SPECIAL STOCKER AND FEEDER SALE
FRIDAY EVENING, OCT. 26
at 7:00 P.M.
VINTAGE SALES STABLES, INC.
10 miles East of Lancaster on Rt. 30, Box 100, Paradise, PA
400 to 600 Head, all breed and weights.
For Information Phone:
L. ROBERT FRAME, Manager
717-442-4181
717-768-8204
215-458-5060

BUTLER CLEAR SPAN BUILDING



FARMSTED I

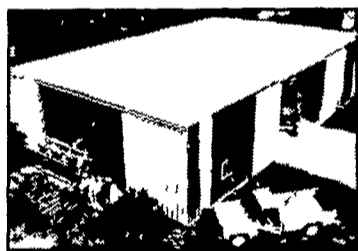
FREE ACCESSORY ALLOWANCE NOW ON ALL BUTLER BUILDINGS

30'x50'x11'
LESS THAN \$4000
* FARMSTED I GALV ROOF & WALLS 16'x10' Double Slide Door

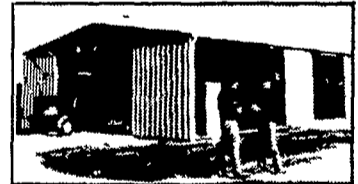
40'x50'x14'
LESS THAN \$5000
* FARMSTED I GALV ROOF & WALLS 20'x13' Double Slide Door

50'x50'x16'
LESS THAN \$7000
* FARMSTED I GALV. ROOF & WALLS 24'x15'7" Double Slide Door

60'x50'x16'
LESS THAN \$8500
* FARMSTED I GALV ROOF & WALLS 30'x15'3" Double Slide Door



FARMSTED II AND



AG-MASTER 2:12

For more info on buildings advertised by our A/B's, please mail to

P.E. HESS, BUTLER MFG. CO
Box 337, Oxford, PA 19363

Name _____
Address _____
City _____
State _____ Zip _____
Phone _____
(include area code) LF

*ALL BUILDINGS F O B ANNVILLE, PA.
*(Buildings not equipped as shown)

*VARIOUS SIZES HEIGHT & WIDTH AVAILABLE

Special Grain Storage Buildings Available

Prices Based On Independent Survey of Agri-Builders
Price Could Vary With Each Agri Builder

CALL YOUR BUTLER AGRI-BUILDER TODAY

- | | | | |
|--|--|---|--|
| Beatty & Nelson Contractor
C & M Sales Inc
A E Engel Inc
Knoxville Construction
Kallerlin Sales & Service
Greenside Contracting
Orville Mack
Leroy E Myers Inc
Al Maurer
W R Moody Contractor | 717 677-9310
717 253-1612
609-983 4404
814 326-4188
814-438 3180
301 472 9161
215 759 1331
301 582 1552
717 864 3135
412 872 6804 | O A Newton & Son Co
Royer's Farm Service
D E Smith Inc
Glenn M Stahlman
Tap Enterprises Inc
Temco Parts Co Inc
Tri County Agri Systems
Tri State Marine Dist Inc
Walter J Construction
Glossner & Concrete Service | 302 337 8211
717 837 3201
717-436-2151
301 777 0582
215-929 2553
301-778-4454
609-467 3174
301 467-1447
717 392-8280
717-962-2564 |
|--|--|---|--|

ALLIS-CHALMERS FIELD DAY
TUESDAY, OCTOBER 16, 1979
(Rain Date Oct. 18)

10 A.M. to 3 P.M.
Event to be held on Haysville Road, Off route 10, Oxford, PA

★ ROAST PIG and BEEF LUNCH

ALLIS CHALMERS FIELD DEMONSTRATION OF THE FOLLOWING TRACTORS AND EQUIPMENT

5020 4 wheel drive	7010 w/disc harrow
5030 w/2 bottom plow	7020 w/chisel plow
5050 w/3 bottom plow	7045 w/moldboard plow
175 w/field cultivator	7060 w/2600 disc
185 w/4 bottom plow	7080 w/implement

FOR MORE DETAILS CONTACT ANYONE OF THE AC DEALERS LISTED BELOW

The Rising Power in Farming

ALLIS-CHALMERS

AG. - INDUSTRIAL EQUIPMENT R2, Rising Sun, MD 301-658-5568	ROY H. BUCH, INC. Ephrata, RD 2 717-859-2441	SHARTLESVILLE FARM SERVICE RD1 Hamburg, PA 215-488-1025
BHM FARM EQUIPMENT, INC. Annville, RD1, PA 717-867-2211	GRUMELLI FARM SERVICE Quarryville, PA 717-786-7318	C. J. WONSIDLER BROS. RD1, Quakertown, PA 18951 215-536-1935
L. H. BRUBAKER, INC. Lancaster, PA 717-397-5179	A. J. NOSS & SON, INC. RD2, Oley, PA 215-987-6257	