

# Christine Erb visits Japanese governor



Carol Gerogre, left, is an exchange student from Milford, New Hampshire. Mr. Hikari Kamei, governor of Fukoka is seated in the center. Christine Erb is on the right. Standing from left to

right is the assistant to the head of agriculture; Mr. Yasunori Kihara and Mrs. Sachiko Kihara, Christine's hosts; Mr. Kiyohara, president of the agriculture section in Fukoka, and the translator.

many things and understand us very well too."

As a gift, the mayor of one of the towns she visited gave Chris a phone call home. She wrote, "It was really great to talk to my Mom again, even though I found out it was 2:00 a.m. and here it was 3:00 p.m."

She admits that sometimes she doesn't

understand the Japanese, and sometimes they don't understand her. However, she adds, "We have one thing that is understood all over the world, and that is a smile. The people are very friendly and try to be helpful in everything."

"All in all," Chris states in her notes, "I am loving Japan very much."

By SALLY BAIR  
Staff Writer

LANCASTER - Christine Erb, a former Lancaster County 4-H'er, is about halfway through her visit to Japan where she is spending six months as a delegate in the International 4-H Youth Exchange (IFYE). Chris is the daughter of Mr. and Mrs. Wilbur Erb, Mount Joy R1.

A highlight of her visit was a recent invitation to visit with the governor of the Fukoka Prefecture. Chris writes, "He is a very interesting and impressive person." He told about the prefecture which is the number one producer of Gyok ro, green tea, in Japar Chris says this is the finest tea in Japan, and it was brought to that country from China by a priest.

Chris reports a very busy schedule, with a visit to a different 4-H group about every other day. While she is enjoying the opportunity to visit so many 4-H'ers, she

admits that it is sometimes tiring.

Sometimes she speaks through a translator, and sometimes the communication is direct. She said she prefers direct communication because with a translator, "I feel I am losing out on really getting to know the 4-H'ers, since most of them are boys and are usually shy and quiet." She said she sometimes gets difficult questions with the translators.

She explains that 4-H'ers in Japan are members are after high school, between the ages of 18-26. "It is really great because Carol George (her IFYE counterpart from New Hampshire) and I fit right in with kids of our own age."

They frequently stay with Japanese IFYE's to the United States, who know English well, or with Japanese Agricultural trainees who have been to

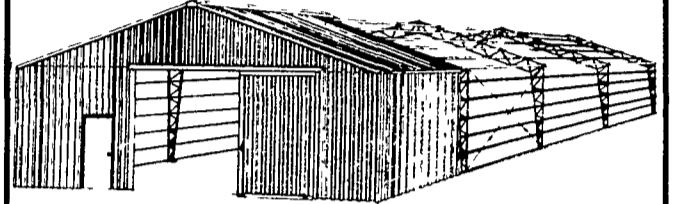
the United States for two years.

Under this training program, Chris says that Japanese farm boys travel to the United States for two years and work on farms, mainly in Nebraska, Idaho, Washington or Oregon.

When they are in the United States, they attend school for about three months to learn about American agriculture.

She said these young people often act as translators for her. "It is really great when we meet them because they can explain so

This new farm building costs **40%** less!



Yes, it costs 40% less than conventional steel buildings!

- It comes in a complete package .steel columns and trusses, wood purlins and girts
- You get unobstructed floor space no poles
- You put it up yourself .the average building takes two men only two weeks or less to construct.

It'll be worth your while to get the complete story about this AGRICONOMY building

**PARTY CONSTRUCTION CO. INC.**

1218 Steuben St. • Utica, NY 13501

Phone 315-724-5593

Or Write:

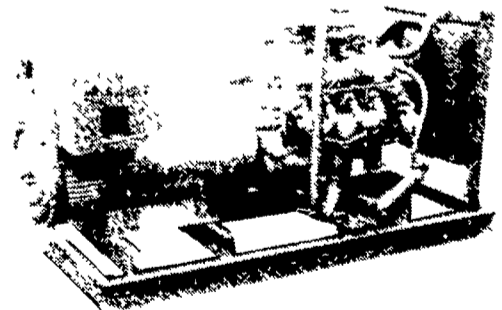
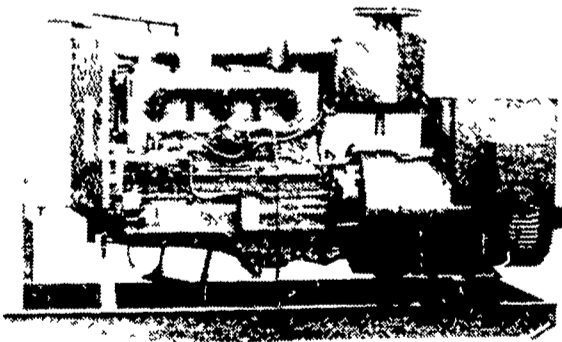
P.O. Box 366L-55

c/o Lancaster Farming  
Lititz, PA 17543

## BALANCED DESIGN ELECTRIC POWER SYSTEM Designed and Manufactured by, MARTIN'S MACHINERY

For Emergency or Prime Power 1 to 1000 KW  
**BALANCED DESIGN to Give You Peak Performance**  
for Your Application:

• FARM • INDUSTRIAL • COMMERCIAL • RESIDENTIAL



Balanced design is important in Engine-Generator Set designing. Generators with excessive surge capacity can stall out engines! Without starting the Load!! Generators lacking in surge capacity can collapse in voltage! Without starting the load!! With balanced design you get peak starting capacity per engine H.P...So, whether you need a 1 H.P. per KW surge to start a stone crusher motor or a tough "soft start" generator to start off a multiple motor poultry house, we can tailor your Engine-Generator set to fit your need. Balanced design adds up to the most motor starting capability per dollar invested.

We Also Have Special Designed Switch Gears  
Manufactured by Westinghouse to Our Specifications

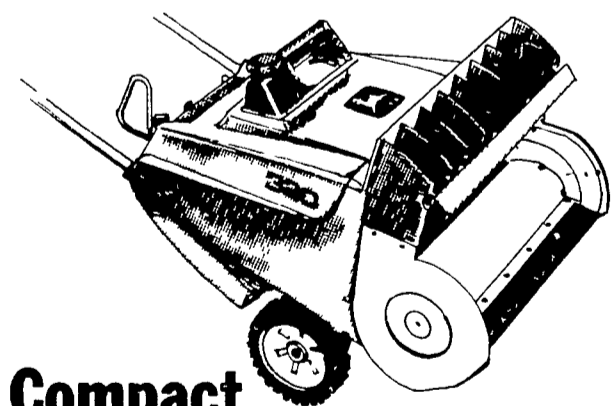
**MARTIN'S MACHINERY**

HARLAN MARTIN

P.O. BOX 35, MARTINDALE, PA 17549

Bus. Ph: 215-445-4800

Res. Ph: 215-267-7771



## Compact Snow Thrower

Take the strain out of snow removal this year with a John Deere Compact Snow Thrower. Heavy-duty 3-hp engine has up to 33 per cent more reserve power than most competitive makes. Seven-inch-diameter tires. Self-priming carburetor for easier cold-weather starts. Wide 20-inch cutting width.

ADAMSTOWN EQUIPMENT INC.

Mohnton, RD2, PA 19540 (near Adamstown)  
Phone (215) 484 4391



A. B. C. GROFF, INC.  
New Holland, PA  
Phone (717) 354-4191

LANDIS BROS. INC.  
Lancaster, PA  
Phone (717) 291-1046