

4-H Volunteers are a valuable asset

LEBANON - Volunteers in the Lebanon County 4-H program provide approximately \$155,220 worth of support to the County 4-H program through their contributions of time, materials, and mileage. Linda Rohrbach, 4-H Agent, announced these statistics at the Leader Recognition Banquet held Tuesday night in Lebanon.

According to Rohrbach, there were over 160 4-H volunteers in Lebanon County in 1979. Using statistics derived from a national study of 4-H volunteers, she estimates that the average 4-H leader contributes 25-eight hour days annually. In addition, leaders provide materials to 4-H'ers, sometimes unknowingly. "There are many leaders who find that 4-H'ers forget and walk off with their pen or who perhaps supply a small piece of interfacing or a teaspoon of vanilla. At the time, it

may not seem like much, but it can add up. But, keep in mind, the average leader contributes about \$50. That means that a lot of leaders contribute less than that amount."

Mileage approximations also figure into the \$155,200 total. The national study showed an average of 400 miles per year. At the accepted rate of 17 cents per mile, that amounts to \$68 per year in 4-H mileage.

Time, materials, and mileage contributions amount to about \$970 for the average Lebanon County volunteer. "Luckily, that's not all out-of-pocket expense," says Rohrbach. "Only about \$110 is earned money and even some of that is tax-deductible; not many volunteers realize that."

The \$970 average in kind contributions from the 160 4-H volunteers amount to a whopping \$155,220 input to the county program.

Rohrbach emphasizes that

4-H volunteers are not looked upon as financial resources. "We do need financial contributions but we also need human resources - people who like to work with 4-H youth, people who have skills, talents, and enthusiasm to share with 4-

H'ers. However, the time they contribute does make a strong case for continued volunteer leadership in the 4-H program."

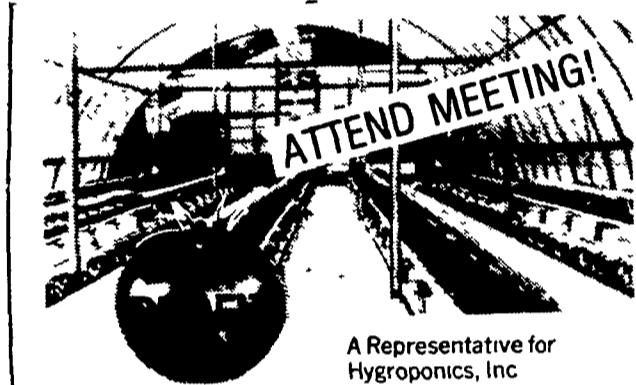
Volunteers can do any kind of job ranging from organizing club meetings, teaching a wide variety of

projects including wood-working, plant science, pets, foods, crafts, livestock, and unlimited others, helping with county wide events, and designing graphics. All skills are utilized in an active county program.

Persons interested in contributing to the 4-H program should contact their county 4-H offices. In Lebanon County, the number is (717) 273-3748.



GROW TOMATOES FOR LOCAL MARKET YEAR 'ROUND



A Representative for Hydroponics, Inc

will demonstrate the patented Hygro-Flo Tube System and discuss its potential for your market

Topics to be discussed:

1. Investment (\$11,000-\$18,000)
2. Production
3. Marketing
4. Income (\$15,000-\$20,000 per yr)

Meeting Time & Place

7:30 P.M., Thurs., October 11, 1979

Host Corral

Rt. 30, 1 mile East of Lancaster, PA

HYGRO

PRODUCTION, INC.

EARL CURTIS NICHOLS, PRES

21 MEADOWS LANE

HAVERFORD, PA 19041

FOR COMPLETE INFORMATION CALL OR WRITE

PHONE 215-527-0850

IF YOU'RE FIXIN' SOMETHING
FIX IT RIGHT



Use the right tools

If you don't have them

RENT THEM!

LANCASTER

AceRents

720 N. PRINCE ST., LANCASTER, PA.

PHONE: 717-393-1701

LEBANON

RUNLIMITED

940 CORNWALL RD.

PHONE: 717-272-4658

We Rent Most Everything



IN OUR JUST PUBLISHED RECIPE BOOKLET

FEATURING:

THAT "WONDERFUL GOOD" SHOE FLY PIE!



CALL TOLL FREE IN AREA CODES 215 & 717: 800-662-7464

ZOOK MOLASSES CO.

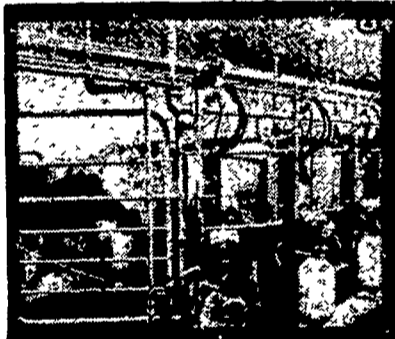
WEST MAIN ST., HONEY BROOK, PA. 19344

ALONG RT. 322

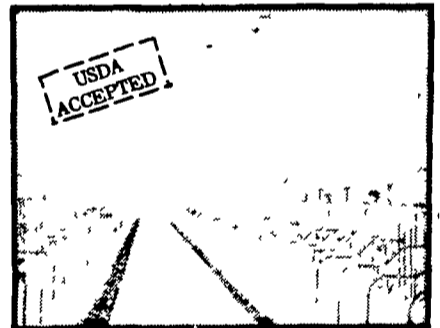
PHONE: 215-273-3776

GLASBORD®

ELIMINATES THE EPOXY AND OTHER YEARLY COSTLY MAINTENANCE TO WALLS AND CEILINGS



FOR FARM BUILDINGS
← CLEANABLE DURABLE →



FIBERGLASS REINFORCED PLASTIC PANELS & ROLLS

- **GLASBORD® IS TOUGH**
- ACID SCRATCH AND ABRASION RESISTANT
- **GLASBORD® INSTALLS EASILY**
- MILKING PARLORS, HOLDING ROOMS, OFFICES, SLAUGHTER HOUSES

- **GLASBORD® RESISTS DIRT**
- WILL NOT STAIN, CORRODE
- RESISTS ANIMAL WASTES
- CLEANS WITH ORDINARY METHODS

IN STOCK - AVAILABLE NOW

3/32 & 1/8" THICKNESS,
4 x 8 FT. PANELS
3/32 & 1/8" - 4 x 40
AND 4 x 45 FT. ROLLS

ALL CORNER MOLDING AND FASTENERS



VINYL MOLDINGS ARE AVAILABLE TO GIVE A FINISHED APPEARANCE & A WATERTIGHT INSTALLATION.

RYDER SUPPLY CO.

RR 8, P.O. Box 219
Chambersburg, Pa. 17201

Phone: 717-263-9111