

Public Sales Register

Closing Date - Monday, 5:00 P.M.
of each week's publication

SAT. OCT. 27 - Juniata Co. Weekend Retreat at Public Sale. For information contact Long Bros. Auctioneers, Rd 2, Port Royal, PA.

SAT. OCT. 27 - 1:00 P.M. Public Sale of 96 acre farm & farm Equipment, Located 1 mile West of Mastersonville, midway between Elizabethtown and Manheim, near Chiques Church of the Brethren along Elizabethtown Rd., Rapho Twp., Lancaster Co., PA. Sale by Earl and Dorothy Ginder. Rufus Geib and Raymond Miller Auctioneers.

SAT. OCT. 27 - 9:00 A.M. Public Sale of Steam Traction Engine, Gas Engine, Buggy Wagons, Household, Antiques. Located at 343. Penn St. (corner of Penn & Grant St.) Hanover Borough, PA. Henry J. & Amanda E. Stambaugh Owners. C.C. Miller and Sons Auctioneers.

SAT. OCT. 27 - 12:30 P.M. View Acres Dispersal of 35 Registered Holsteins plus calves. Located at Art Kling's Sale Barn, Located in Perry Co., 2 1/2 miles-NE of Landisburg, PA on Rt. 74, 14 miles north of Carlisle, PA. V Art Kling Owner.

SAT. OCT. 27 - 1:00 P.M. An-

nual Fall Calf Sale of the Maryland Shorthorn Assn Held at the Frederick Fairgrounds, Frederick MD H. Dodrer Sale Manager.

TUES. OCT. 30 7:30 P.M. - Yearling Steer Sale Held at Narrows Livestock Auction Market, Inc., Narrows VA

TUES. OCT. 30 - Special Feeder Sale for Cattle and Pigs Held at the Carlisle Livestock Market, Just off I-81 at Exit 12.

NOVEMBER

THURS. Nov 1 - Monthly Cow Sale at the Melvin Kolb, Inc. Sales Barn, 2220 Dairy Road, Lancaster, Pa 17601. Dennis Kolb, Sales Manager, Robert Mullendore, Auctioneer.

THURS. NOV. 1 - 7:30 P.M. Week End Retreat At Public Auction, Located in Central Juniata Co. For information contact Long Brothers Auctioneers 717-527-4784

FRI. NOV. 2 - Clean-up Sale - all kind of cattle 1200 head Held at the South Branch Stockyards, Inc - Moorefield, WV.

FRI. NOV 2 - 12:00 P.M. Public Sale of Milk Cows and Bred

Heifers, 35 head Holsteins, Located in Mifflin Co., turn east off Rt 22, about 5 miles south of McVeytown, PA at Atkinsons Mills, travel 2 miles to farm. Wilber R. Coulter Rd 1, McVeytown, PA Owners Mark Glick auctioneer.

SAT NOV 3 - New Furniture Stock Reduction Auction Located between Morgantown & Churchtown along Rt 23 Sale by Twin Valley Furniture John E & Paul E. Martin Auctioneers.

SAT NOV 3 - 9:30 A.M. Public Sale of Valuable 80 acre farm, machinery and some furniture Located in Mifflin Co., 8 miles north of Lewistown, PA on Rt 522, A. S. Uish, Rd 1, McClure, PA Owner. Mark Glick Auctioneer.

SAT. NOV. 3 - 2 P.M. Public Sale of 44 Acre Farm. Located midway between Lebanon & Myerstown on north side of Rt 422. Jackson Twp., Leb. Co Terms by Carl M. & Mary H Nolt. Elton & Alvin Horning

Auctioneers, -Horning Farm Agency, Inc

SAT NOV 3 - 9:30 A.M. Public Sale of Farm Machinery, Some Household Goods & 80 Acre Farm Located in Mifflin Co., 8 miles North of Lewistown, PA on Route 522, A S Uish, owner. Mark Glick, Auctioneer

SAT NOV 3 - 10:00 A.M. Public Sale of Livestock, Farm Equipment, Feed, Antiques, Car, Household Goods. Located 6 1/2 miles East of Gettysburg or 3 1/2 miles West of New Oxford, on Route 30 then turn North 1/2 mile at New Chester, Road sign, in Adams County, PA Henry Osborne, owner. Clair R Slaybaugh, Auctioneer

SAT. NOV 3 - 10:30 A.M. Auction Sale of K & G Welding Complete Liquidation Real Estate, Twelve Ton Crane, Forklift, Welders, Hoist & Tools North of the Village of Greble, Lebanon Co., PA Conditions by Melvin Klick and

John Graybill Eberole & Shoop, Auctioneers

SAT NOV 3 - Public Sale of 3 Acre Property and Personal Property Located between

Churchtown and Morgantown, PA. Follow Rt 23 to California Rd., then go north approx 1 1/2 mile to property Terms by Dan and July Mitchell, Horning Farm Agency, Inc.



GAP AUCTION

FRIDAY EVE., OCT. 12, 1979
5:30 P.M.

Located off Route 41 - Lancaster Avenue opposite Turkey Hill Minit Market - Cross RR Bridge.

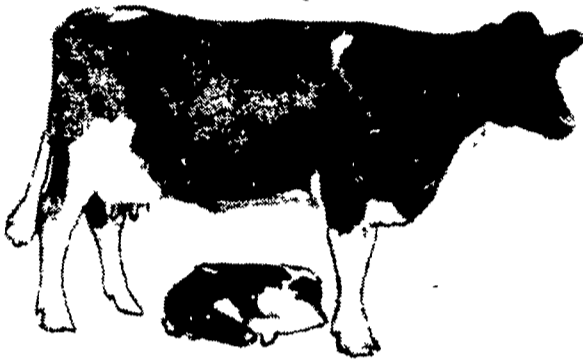
ANTIQUES AND HOUSEHOLD GOODS
SOLD AT EVERY AUCTION.

CONSIGNMENTS ON MONDAYS
FROM 8:00 A.M. to 7:00 P.M.
OTHER DAYS BY APPOINTMENT.

Call us for pick-up service

IRA STOLTZFUS & SON, Auctioneers
442-4936 or 442-8254

CONDUCTORS ALL TYPES PUBLIC SALES



FALL ANNIVERSARY SALE

Held at
Shady Lane Dairy Sales
Located 1/4 mile west of Quarryville, PA Off Rt. 372 on Oak Bottom Rd.

FRIDAY NIGHT, OCTOBER 12

8:00 P.M. SHARP

85 HEAD OUTSTANDING HIGH GRADE HOLSTEINS 85

This sale consists of one complete Maryland herd, many fresh and springing cows and balance in various stages of lactation. Herd always on DHIA with a herd average of over 14,000M & 553F. All home raised I.D. grades from top Virginia, Maryland and West Virginia A.I. Sires. This is a young herd with ages running from 2 to 5 years showing excellent dairy quality and many fine udders.

Individual records running to and over 20,000 with cows closely culled, this has been a family operation with no hired help. The cows were always well attended but never pushed. The only reason for the sale is the retirement of the farmer. This is a clean herd, buy with confidence.

TB & Blood tested, pregnancy examined by vet.

Terms: Cash or good check sale night. Not responsible for accidents.

Note: Due to the annual large attendance no transportation can be arranged for this sale. Ample parking.

At This Time of The Year, with the harvest in and silos filled, We would like to invite all our customers and friends of the dairy business to take an evening off and come to an Oxen and pig roast, starting at 5:30 p.m. Come as you are and please bring your family

We sincerely appreciate the business over the years and hope with your continued support to keep on serving you for many years to come:

— Specializing in herds, both public sales and private —
None too large or none too small!!

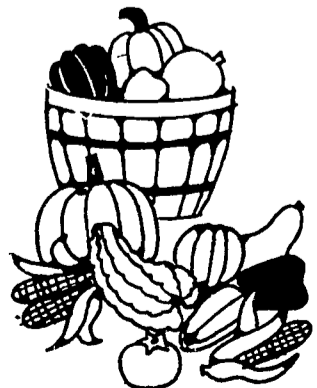
If you need a herd or want to sell a herd contact us for good reputable service.

SHADY LANE DAIRY SALES

Rd. 4 Box 463, Quarryville, PA 17566

Glenn D. Fite
717-786-2750

David L. Fite
717-786-1725



PUBLIC SALE

TRUCKS—MACHINERY—LAWN
EQUIPMENT—SHOP TOOLS
FRIDAY, OCTOBER 12

At 10:00 A.M.

Located in Centre Co., go 3 1/2 miles East of Old Fort (Centre Hall, Pa.) on Route 45, turn left (North) on Ross Hill Road, toward Penns Cave, travel 1 mile turn left on Bittner Hollow Road to 1st farm.

SHOP TOOLS AND SOME FURNITURE

Complete set of tools from Knepp Tractor Sales, Inc., Lincoln 225 amp. welder, acetylene cutting torch in good cond., large Ford space heater w/thermostat, Ford pressure washer, Power King battery charger, Rockwell hand grinder, 3/4 H.P. bench grinder, engine analyzer, bench vise, Snap On combination puller set, valve grinding set, Craftsman 3/4 in. socket set, set of wrenches up to 2 ins., tap and die set, 2 torque wrenches, drill bits, roll chest tool boxes (2 bottoms and 1 top), filled w/Snap On Craftsman tools, wrenches, sockets, etc., oil barrel pump, electric gas pump, 5 tube fluorescent light, radio, pile dry cherry boards, pig roasting outfit w/power spit, old iron dinner bell, automatic washer and dryer, other pcs. furniture.

LAWN AND GARDEN EQUIPMENT

4 Bolens lawn and garden tractors (including 1978-16 H.P.) w/some att's., 2 Bolens roto-tillers, 4 Bolens heavy duty power mowers, 3 chain saws (including Homelite XL923), cut off wood saw, Honda 50 mini trail bike, Northway snowmobile, Snowco 2500 lb. dump snowmobile trailer, western saddle, pad and bridle.

4 AUTOMOBILES - 6 TRACTORS

1964 Ford N-600 truck w/new engine and 16 ft. flat bed, 1959 Ford 600 truck w/9 ft. flat bed, Lowboy 3 axle trailer 16 ft. long, 1964 I.H. all wheel drive scout late inspection, 1945 Jeep needs some repairs, 1978 Ford no. 5600 dsl. tractor run 300 hrs., Ford 772 hyd. loader, Ford 6000 dsl. tractor recently overhauled, Ford 860 powermaster tractor, Ford one arm hyd. loader, Ford Jublee tractor in good cond., Ford 9N tractor runs good, Ford 8N tractor w/new rubber, Ford front end snow plow, Ford no. 101-3-14 in. plow, I.H. no. 175 S.P. 10 ft. mower conditioner, Case 12 ft. S.P. conditioner w/Case 4 cyd. water cooled engine, Hesston PT-10 mower conditioner, N.H. 10 ton wagon w/metal bale rack, N.H. skelton bale elevator, Wind row turner, Ford no. 110-6 ft. rotary mower, I.H. no. 430 baler w/thrower, 2 Ford balers (one w/thrower), N.H. no. 717 harvester w/corn head, Ford no. 309 corn planter, 2 barrel trail sprayer, old N.H. tank flail manure spreader, pickup bed trailer, 10 ft. 3 pt. lift, 10 ft. transport disk. This is a clean up sale and all machinery is selling. 20,000 bales good 1st and 2nd cutting alfalfa hay will be sold in lots.

Terms - CASH OR GOOD CHECK

Lunch at Sale

Mark Glick - Auctioneer
Reedsville, Pa.

JACK PHELAN
R.D. #1 Box 255
Spring Mills, Pa.