

Sterling elected president of Limousin Association

REEDSVILLE, W. Va. — The Eastern Limousin Breeders Association held their annual membership meeting September 29 at Inter-State Farms, Reedsville, West Virginia. Larry Sterling, manager of Inter-State Farms was elected president for the coming year. William Slagle, Friendsville, Md. was elected vice-president and Robert Line, Jr. Carlisle, Pa. was re-elected secretary-treasurer.

The membership agreed to enlarge the size of the board of directors from six to nine members. The following five members were elected to the

Heart Association elects officers

HARRISBURG — Dr. Robert F. Zelis, Hershey, was elected president and Thomas W. Walker, Harrisburg, was named chairman-elect of the Board of Directors of the American Heart Association, Pennsylvania Affiliate, on September 30, during the annual Assembly in White Haven.

Others named to top posts were: Judith K. Daugherty, R.N., Ligonier, chairman of the Board, and Dr. Joseph M. Young, Monessen, president-elect.

The election was the highlight of the two-day assembly which included panel discussions on the future growth of the Heart Association in Pennsylvania, awards to key volunteers, and a meeting of the Board of Directors.

board: James Fawley of Lynchburg, Ohio; Harry Kesterson of Parkinsburg, W. Va.; Charles McDonald of Inwood, W. Va.; Richard McDonald Jr. of Shippenburg, Pa. and William Slagle.

Discussion was held on the Spring Sale at Columbus, Ohio on May 3. Members are encouraged to start selecting quality animals now for that sale. A summer field day is being planned. The location and date of this event will be announced. There was also interest in a fall field day and club calf sale. The sale committee is to draw up plans for this sale.

Robert Line, membership chairman outlined this years membership drive. Members are being selected in different areas to coordinate this drive. These area coordinators will be

responsible for contacting owners of Limousin or those interested in Limousin cattle. Line stressed the importance of supporting the local association by being a member. It is the local association that sponsors sales, field days and advertisements of the breed. Young people 18 or younger are encouraged to become Active Junior members. For one dollar they can receive information and participate in the associations activities.

It was reported that there was a good Limousin display at the Ohio State Fair. An interest in showing and exhibiting Limousin was expressed. This matter was referred to the show and exhibit committee.

The following appointments were made for the coming year: Gordon Briggs, Gambier, Ohio - sale; John Moore, Newville,

Pa. - shows and exhibits; Robert Line, Jr. - membership and Richard McDonald, Jr. - promotion.

The associations territory includes Delaware, Maryland, New Jersey, New York, Ohio, Pennsylvania, Virginia, West Virginia and New England. All Limousin breeders or persons interested in Limousin are encouraged to contact any member of the board or Eastern Limousin Breeders Association, RD5, Box 114, Carlisle, PA. 17013 for more information.

COMPACT!

Kubota mid range diesel tractors maneuver small, work big

KUBOTA FARMERSVILLE EQUIPMENT INC.

RD4 EPHRATA, PA 717-354-4271

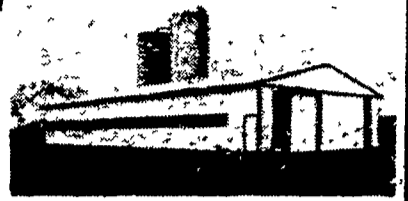
NEED A FARM-URBAN-COMMERCIAL BUILDING?



Call Your HUSKEE-BILT MAN!

Huskee Gives You More!

- Full 6" x 6" Poles
- American made steel
- Spacious Doors
- Factory Assembled Trusses
- Top grade lumber throughout
- Eave heights to 19'



Also ask about our CONTROLLED ENVIRONMENT BUILDING. A Thrive Center controlled environment building means healthier, healthier animals, reduced labor and feed costs and almost no manure handling or odor. They pay for themselves in no time!

THRIVE CENTER SYSTEMS BY HUSKEE-BILT

Name _____
Address _____
Town _____ State _____ Zip _____

- Send more information Have representative call
 My phone number is: _____
 Student Farmer Businessman

Consider a Complete Hog Producing Unit ... Thrive Center systems by HUSKEE-BILT are one of the most efficient.

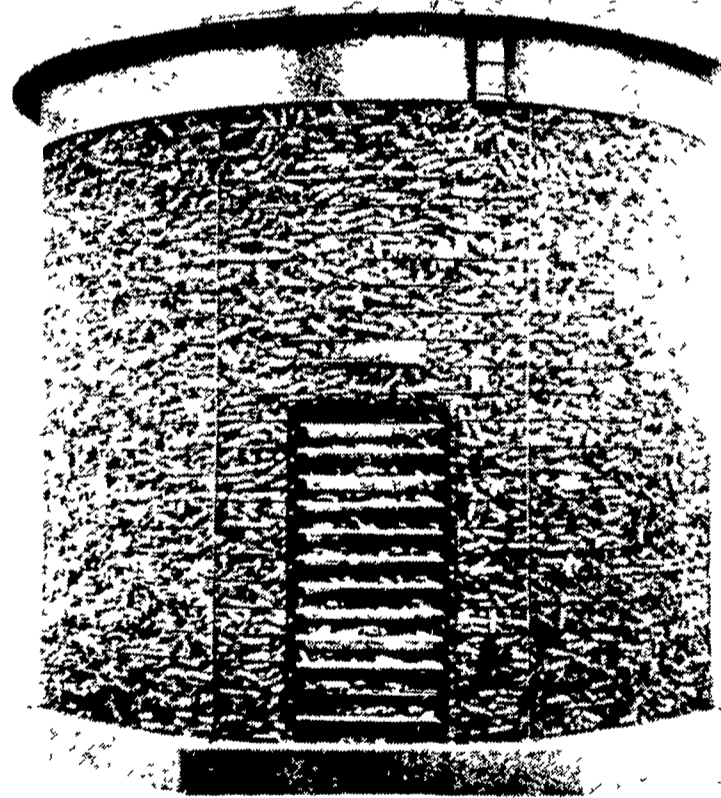
ALSO ask about Thrive Center Environmental, our Total Animal Confinement Systems



MERVIN MILLER
7 KEENER ROAD
LITITZ, PA 17543
PHONE: (717) 626-5204



SPEEDY CORN CRIBS



BAR-LOK CONSTRUCTION

Cut Corn Crib Erection Time!
Store More Corn For Less Money!

No other corn crib goes up as fast or as easy as the Speedy Crib with roof rafters. This feature, plus Bar-Lok side panels, minimizes corn crib erection time.

There's a Speedy Crib for every farm need, priced right for every budget.

- **CHOICE OF 900, 1200 or 1700 BUSHEL SIZES**
One of them is just right for your particular storage needs
- **5 OR 2 GAUGE WIRE MESH SIDE PANELS**
The Speedy 5 gauge crib won't bulge or sag — stands straight and tall year after year. For extra strength and durability, get the 2 gauge crib. It outlasts other cribs even with full capacity loads
- **STEEP (35°) or EXTRA STEEP (45°) PITCHED ROOF**
You don't have to climb inside the crib to kick the corn to the edges. You fill right to the top with no wasted space
- **SPECIAL 1700 BUSHEL CRIB**
Bottom two thirds 2 gauge wire mesh, top one third 5 gauge wire mesh. Gives extra strength where the stress is the greatest
- **OPTIONAL WEATHER-BAN**
Two foot wide band of heavy gauge galvanized sheet — prevents rain and snow from entering top of the crib

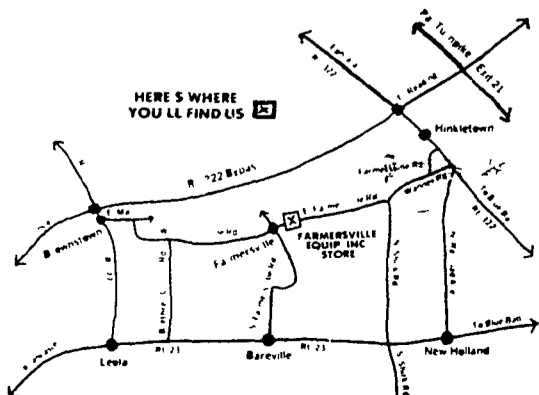
EASY TO ERECT!



Step 1—Bar Lok Construction saves you time—gives you a strong, sturdy crib. Crib wire panels are interlaced to form an eye. A 1/2" x 3/4" rod is then inserted through the eye and pushed down to the foundation. Easy, simple, fast construction.



Step 2—Rafters are bolted to assembled rafter ring. Now you're ready to put the roof panels on. Rafters assure you of proper roof panel placement the first time. No wooden framework to build.



All Models In Stock

FARMERSVILLE EQUIPMENT INC.

RD 4, Ephrata, PA

717-354-4271

HOURS

Mon., Tues., Wed., Fri. — 7:30-5:30
Thurs. — 7:30-9:00
Sat. — 7:30-3:00

COMPLETE FARM PAINTING



We Use Quality PAINT
AERIAL LADDER EQUIPMENT

- Modern and Efficient Method
- Reasonable Prices
- Spray-On and Brush-In Method
- Sandblasting if Necessary

FOR FREE ESTIMATES WRITE:

ESH SPRAY PAINTING

(Daniel S. Esh, C. Ralph Miller)
SPRAY-ON AND BRUSH-IN PAINTER
Box 350A
Ronks, PA 17572
or call this number
717-687-7007
or 717-687-8262
INDUSTRIAL COMMERCIAL RESIDENTIAL