

U.S.D.A. recommends beef research program

NEW YORK, N.Y. - U.S. Department of Agriculture officials recently recommended establishing a nationally-coordinated research and information program for beef.

The department's recommended decision is based on evidence from public hearing sessions on a proposed beef research and information order earlier

this year in Dallas, Texas, Atlanta, Ga., Pittsburgh, Pa., Reno, Nev., and Des Moines, Iowa. The department also considered comments received on hearing testimony.

Written comments and exceptions will be accepted on the recommended decision until Nov. 5. Five copies of all comments should be sent to the Hearing

Clerk, Rm. 1077-S, USDA, Washington, D.C., 20250, where anyone may review them.

Under the recommended order, a beef board composed of producers would collect assessments on sales of cattle. Funds would be used for research, producer and consumer information, and promotion to improve, maintain and develop

markets for cattle, beef and beef products. The program would be monitored by the department's Agricultural Marketing Service.

During the first two years of operation, the board could collect assessments of up to one per cent of the value of cattle sold. After that, the assessment rate could change, but it could not exceed five-tenths of one per

cent of the value of cattle sold. Producers not wishing to fund the program could receive refunds from the board.

After all comments on the recommended decision are evaluated, the department will issue a final decision. If that decision is favorable, producers will vote on the

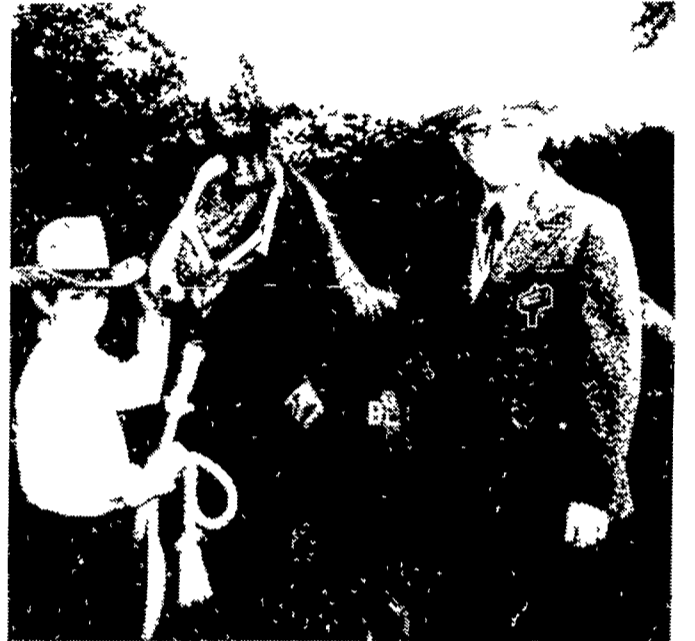
proposed order in a national referendum.

The recommended decision was published in the Sept. 21 Federal Register. Copies are available from the Agricultural Marketing Service, Rm. 2610-S, USDA, Washington, D.C., 20250, or phone (202) 447-2068.

Colts presented

(Continued from Page 112)
Ohio Quarter Horse Association and the National Quarter Horse Association.
Evans presents Quarter

Horses to worthy 4-H members in a number of states each year as a measure of his support for the 4-H program.



A Quarter Horse weanling colt was presented to 4-H member Roy Jarman, Camden-Wyoming.

DETWEILER SILOS

Increase Your Present Silo Capacity By Extending Your Silo

Dollars per ton an extension costs less than a new silo. We can extend most brands of concrete stave silos.

New Silos and Extensions
Tear Down and Rebuild
Silo Repairs
Jamesway Equipment

Write or Call
RD#2 Box 267D
Newville, PA 17241

PHONE
717-776-7533
or 717-776-3288

USS Cold-flo NPN™ for Corn Silage Now - FDA Approved!



USS Cold flo NPN Converter

Add 7 lbs. of Anhydrous Ammonia Via Cold-Flo and increase protein content of Silage by 4%

OPEN Mon thru Fri 7 30 to 4 30 Sat till Noon



ORGANIC PLANT FOOD CO.

2313 NORMAN ROAD, LANCASTER, PA.
PHONE: 717-397-5152

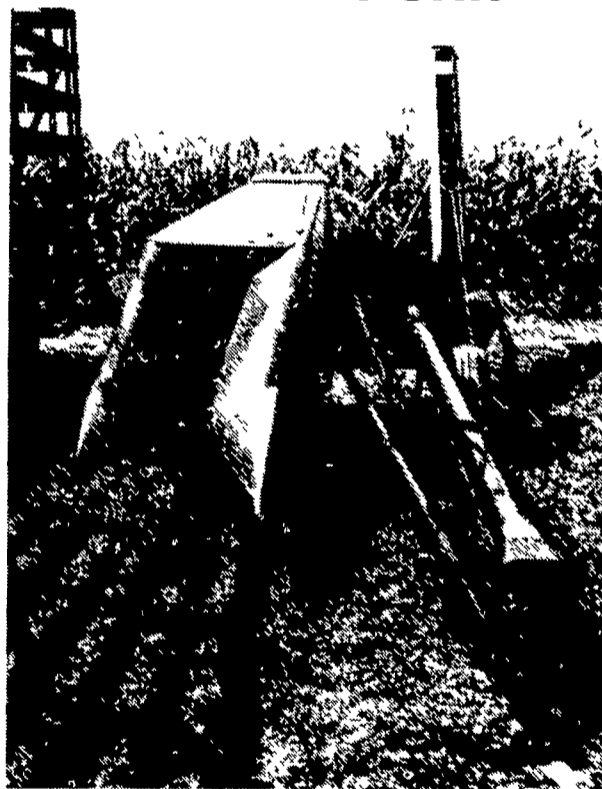
FORAGE HIGH DUMP WAGON



Model 2201

- ★ 4-wheel, auto. type steering
- ★ 11x20 used military tires
- ★ 573 Cubic feet or 22,000 lbs. capacity
- ★ Roof included

BIG CAPACITY GATHERING UNIT



- ★ Three roller-type gathering chains with wide lugs that lift the leaning stalks without tearing
- ★ 8 roll husking bed
- ★ Large fan.

GRUMELLI FARM SERVICE

Quarryville, PA 17566
717-786-7318

We Specialize In Aerial Work Using Our Twin Bucket Boom Truck

Extends To 55 Ft

ELECTRICAL CONTRACTING

Specializing In AGRICULTURAL WIRING

Also Residential, Industrial And Commercial Work
Free Estimates

C. M. HIGH CO.
Box 175 RD 2
Myerstown PA 17067
Phone 717 866 7544

We Have Poles In Stock
25 30
35 4 45

Still your best crib buy

See Us Today

1200 Bu Size
Now Available

EXCLUSIVE SPEEDY ROOF RAFTERS MAKE SPEEDY CORN CRIBS

Twice as Fast

Twice as easy to erect

Speedy roof rafters guarantee easy, proper placement of roof panels the first time. Rafters add great strength to the roof. Panels need only to be bolted together in three places. It's another big time-saving feature you get only in Speedy Bar-Lok corn cribs.

Stands up best — lasts longer
Wire mesh panels are 5-gauge wire — thick as a 1/4" bolt!
No bulge or sag. Sturdy 25 gauge galvanized roof is securely anchored to 9 steel roof rafters and side panels. Can't blow off!

Come in today and see the Speedy Bar-Lok corn crib. Let us prove to you that Speedy is twice as fast — twice as easy to erect. Let us show you all the other features that make Speedy Bar-Lok your best corn crib buy.

GRUMELLI'S FARM SERVICE
Quarryville, PA
Phone 717-786-7318

LANDIS BROS., INC.
Ph 717-291-1046
1305 Manheim Pk
Lancaster, Pa 17601