

# Livestock market and auction news



## THE OLD FARMER'S ALMANAC

OCT. 1-7, 1979

Sun's scowling; storm's prowling

Pick green tomatoes before frost Al Smith died Oct 4, 1944  
Full moon Oct 5 Average length of days for the week 11 hours,  
35 minutes Yom Kippur Oct 1 Pickle vegetables now and  
it's also time to prune or plant trees *There is no medicine for fear*



Ask the Old Farmer I have always been a fire truck buff and know quite a bit about the history of fire-fighting. But I've never known why some trucks are called "hook and ladder" trucks. D H Cambridge Mass

Such trucks used to carry a huge hook on a pole to haul wooden buildings apart in order to contain the fire

Home Hints Clip the corner off an old envelope to use as a one-time funnel

### OLD FARMER'S WEATHER FORECASTS

New England: Week begins cold, with some showers, then heavy rains, continued cold, through weekend

Greater New York-New Jersey: Sunny and mild to begin, rain mid-week, heavy at times, cool for week's end

Middle Atlantic Coastal: Sunny to start, then cool with rain, heavy at times, through weekend

Piedmont & Southeast Coastal: Sunny and cool with showers northeast, mid-week hot with rain, mild for week's end

(All Rights Reserved Yankee Inc. Dublin NH 03444)

### Four States Livestock

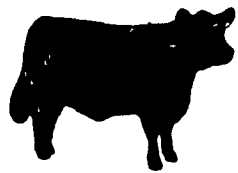
Four States Livestock Sales, Inc.

Wed., September 19, 1979

SLAUGHTER: Fed Steers steady - Choice 67.00-69.00; Good 61.00-66.00; Medium 60.00 Down. Heifers - Choice 62.00-64.25; Good 58.00-61.00; Medium 57.00 Down. Cows \$2.00-3.00 Higher - High Yield 55.00-57.25; Average 50.00-54.00; Big Middle 45.00-49.00; Shelly 46.00 Down. Fat Bulls \$2.00 Higher - Good 62.00-65.10; Medium 56.00-61.00. Veal Calves Good Run \$3.00 Higher - Choice 108.00-114.50; Good 100.00-107.00; Medium 90.00-99.00; Farm Hfrs. to 238.00; Farm Bulls to 107.00; Light & Weak 80.00 Down. Lambs Mostly Steady - Choice 60.00-63.75; Good 55.00-59.00; Medium 54.00 Down. Sows - 300-650 lbs. 27.50-31.75.

STOCKER: Steers 300-550 lbs. Very Active Bidding and

Higher Prices - Choice 92.00-100.00; Good 82.00-91.00; Medium 72.00-81.00; Culls 71.00 Down. Steers 600-850 lbs. - Choice 77.00-85.00; Good 69.00-76.00; Medium 68.00 Down. Heifers (All Weights) Few to 92.50 - Choice 75.00-83.00; Good 69.00-74.00; Medium 68.00 Down. Bulls Few to 102.00 - Choice 85.00-93.00; Good 76.00-84.00; Medium 75.00 Down. Dairy Cows to 760.00. Springing Hfrs. to 1100.00. Pigs, Hd. 2.00 Lower - 20-30 lbs. 9.00-17.00; 40-60 lbs. 18.00-21.50. Shoats by Lb. to 40.00. Slaughter Hogs \$1.00 Lower - 200-230 lbs. 38.50-39.50; 240-260 lbs. 38.00-39.00; 180-195 lbs. 34.00-36.00.



### BEEFALO HYBRID CATTLE BRED BEEFALO FOR SALE

- Rapid gains on grass and roughage  
- 55-65 lb Births - up to 1100 lb yearling  
Visit our farm and see our animals

In stock **SEMEN \$12** an ampule  
1/2 & 3/4 Blood Bulls & Heifers

### BEEFALO M & J

4270 Quakerbridge Rd  
Princeton, NJ 08540 609-896-0336  
Member World Beefalo Association

### Vintage Sales Stables, Inc.

SPECIAL STOCKER AND FEEDER SALE

FRIDAY EVENING, SEPT. 28

FRIDAY EVENING, OCT. 26

at 7:00 P.M.

VINTAGE SALES STABLES, INC.

10 miles East of Lancaster on Rt. 30,  
Box 100, Paradise, PA

400 to 600 Head, all breed and weights.

For Information Phone:  
L. ROBERT FRAME, Manager  
717-442-4181  
717-768-8204  
215-458-5060

### Leesport Auction

Leesport, Pa.  
September 19, 1979

CATTLE 225. Compared to last Wednesday's market, slaughter cows \$1 higher. Choice 1000-1300 lbs. No. 2-4 slaughter steers 65.50-68.00, few to 69.10, Good 63.35-65.75, Standard 59.10-63.25. Few Choice slaughter heifers 62.50-65.50. Utility & Commercial slaughter cows 49.00-54.50, few 55.35, Cutters 48.00-54.25, Canner & Low Cutter 46.00-48.25, Shells down to 42.00. Good & Choice slaughter bullocks 62.00-66.50, few Standard 59.50-61.50. Yield Grade #1 1100-1875 lbs. slaughter bulls 57.25-70.25. Few Good 600-800 lbs. feeder heifers 63.00-70.00; few Good 900-950 lbs. 68.50-70.00.

CALVES 113. Few Choice vealers 105.00-108.00, few Good 95.00-100.00, Standard & Good 70-105 lbs. 65.00-80.00, few Utility 50-80 lbs. 45.00-65.00. Farm calves, holstein bulls 90-130 lbs. 85.00-126.00; few holstein heifers 100-140 lbs. 150.00-200.00.

HOGS 301. Barrows & gilts 50 cents lower. US No. 1-2 200-240 lbs. barrows & gilts 41.00-41.75, few lots 42.10, No.

1-3 195-260 lbs. 40.85-41.60. US No. 1-3 300-550 lbs. sows 28.00-33.00, few to 38.00, No. 2-3 300-600 lbs. 23.00-27.00. Boars 24.00-32.00.

FEEDER PIGS 236. US No. 1-3 15-25 lbs. feeder pigs 60.00-65.00 cwt., No. 1-3 35-55 lbs. 65.00-74.00, couple lots 80.00 cwt.

SHEEP 13. Few Good & Choice 60-105 lbs. spring slaughter lambs 62.00-64.50. Few Slaughter ewes 24.00-28.00.

### Special Market

Narrows, Va.  
September 18, 1979  
Special Yearling Steer and Heifer Sale

There were 1,514 head sold. All cattle were graded by Representatives of the VDACS's DIVISION of Markets, Livestock Section on VDACS standards and sold by the hundredweight.

STEERS: Choice 500-600 lbs. 88.50-91.50; 605-700 lbs. 86.00-87.75; 705-800 lbs. 80.25-82.00; 805-900 lbs. 75.75-77.00; 905-1000 lbs. 69.75-71.00; 1000-1100 lbs. 65.50-69.50. Good 500-600 lbs. 87.25-90.00; 605-700 lbs. 84.25-86.25; 705-800 lbs. 79.00-81.25; 805-900 lbs. 74.50-77.00; 905-1000 lbs.

### VIRGINIA TEL-O-AUCTION FEEDER PIG SALES

Oct. Location	Phone	Sale Time
3 South Hill	804-447-7161	2:30
3 Marion	804-786-3951	3:00
4 Farmville	804-392-5376	4:00
9 Harrisonburg	703-434-6765	7:00
11 Courtland	804-562-2143	4:00
15 Tappahannock	804-443-3276	4:00
18 Farmville	804-392-5376	4:00
18 Petersburg	804-733-7671	4:00
23 Madison Mills	703-672-2811	4:00
23 Harrisonburg	703-434-6765	7:00
25 Courtland	804-562-2143	4:00

Contact

### MIKE CARPENTER

Va Dept. of Agriculture  
(804) 786-3951  
(prior to sale day)  
Night (804) 271-8610

### Green Dragon Livestock Sales

1 mile North of Ephrata, PA



### COWS COWS COWS BUYERS FROM 3 STATES

Regular consignments from Ray Kyper, Bob Kennedy, Dale Brewer and Ed Stover plus local consigners.

Lots of good Northern Feeders and Stockers.

### SALE EVERY FRIDAY

Bulls, Steers, Slaughter Cows, Lambs and Veal Calves.

11:00 A.M. - Beef Sale Stockers & Feeders 200 to 250 each week.

12:30 P.M. - Dairy Cows

7:00 P.M. - Small Animal Sale

For Special Sales and Herd Dispersals on the farm or at our barn or other market information call: Office 717-733-2444.

WALTER H. RISSER, Proprietor

65.00-70.00. Medium 500-600 lbs. 87.00-89.50; 605-700 lbs. 81.00-83.50; 705-800 lbs. 76.00-78.00; 805-900 lbs. 66.00-70.00. Short 500-600 lbs. 73.00-80.00. Plain 500-600 lbs. 78.00-83.25; 605-700 lbs. 73.00-75.00; 705-800 lbs. 68.00-69.00; 805-900 lbs. 64.00-66.50.

HEIFERS Choice 500-600 lbs 78.00-80.50; 605-700 lbs 69.25-79.25; 705-800 lbs. 60.00-61.50; 805-900 lbs. 60.00-60.50. Good 400-500 lbs 75.00-76.00; 505-600 lbs. 75.00-79.00; 605-700 lbs. 69.00-75.25; 705-800 lbs. 60.00. Medium 400-500 lbs. 65.00-74.50; 505-600 lbs.

65.00-72.50; 605-700 lbs. 67.00-72.00; 705-800 lbs. 60.00-64.50. Short 500-600 lbs. 65.00-68.50. Plain 400-500 lbs. 55.00-65.00; 505-600 lbs. 66.00-67.00; 605-700 lbs. 65.00-66.25.

### Solar Energy

Solar energy reaches our planet at the rate of five million horsepower per square mile. This steady flow is called the solar constant and no measurable change in it has been detected in more than a century.

## HARVEY Z. MARTIN HAY AND STRAW SALE

WILL BE DISCONTINUED UNTIL FURTHER NOTICE.

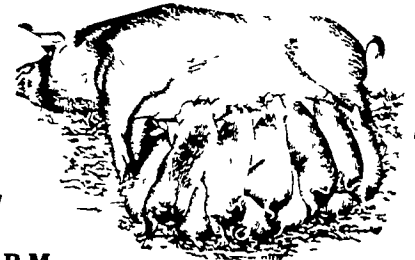
HOWEVER, WE WILL STILL BUY HAY & STRAW PRIVATELY AND ON ORDERS.

For More Information  
Phone: 215-445-5303

### NEW HOLLAND SALES STABLES, Inc.

12 Miles East of Lancaster  
on Route 23, New Holland, Penna.

WEEKLY FEEDER PIG SALE EVERY WEDNESDAY



Sale to Start at 1 P.M.

SPECIAL WEDNESDAY, OCTOBER 17, 1979

30 Head of Bred Gilts due to farrow soon after sale consigned by Jonathan Lapp.

We Will Receive Your Pigs Anytime From 7 A.M. Wed. Morning

State Graded Until 12 Noon.

All pigs inspected by State Approved Veterinarian.

State tags available at our office for you to tag pigs at home to save 25 cents tagging charge.

Tags delivered if you call 717-354-4341 our office in advance.

Calf Sale To Be Held

Every Thursday At 4:30 P.M.

NORMAN KOLB ABE DIFENBACH

717-397-5538

717-393-4464

## SPECIAL NOTICE HAY, STRAW & EAR CORN SALE AT DAVID H. GOOD'S FARM MACHINERY SALE

EVERY WED. AT 12 NOON

ON NORTH MAPLE AVE., LEOLA, PA.

Home Phone 717-656-8911

Bus. Phone Wed. Only 717-656-9558