

# Livestock market and auction news

## Lancaster Market

Lancaster, Pa.  
Monday, September 24, 1979  
Cattle Calves Hogs Sheep

Today	1396	112	1427	95
Last Monday	1608	97	1398	101
Last Year	600	167	1062	115
Monday's Auction	1031	128	1433	126
Last Monday's Auction	1174	93	1244	101

CATTLE: Compared to last Wednesday slaughter steers steady, instances 50 higher; slaughter heifers 50-1.00 lower; cows fully steady; bullocks 50-1.00 higher; bulls uneven, yield grade 1 1.00-2.00 higher, yield grade 2 fully steady.

SLAUGHTER STEERS: Few high Choice and Prime 3-4 1100-1350 lb. 69.25-72.00; Choice mainly 2 1050-1350 lb. 69.75-71.50, couple 72.00-72.75; Choice 2-4 1000-1300 lb. 67.60-70.00, around 30 head 70.25-70.50; high Good and low Choice 2-3 66.00-69.25; Good 2-3 61.50-66.50.

SLAUGHTER HEIFERS: Choice 2-3 900-1100 lb. 62.00-66.00, few 66.25-68.25; Good 2-3 850-1025 lb. 57.00-62.00.

COWS: Utility and Commercial 1-3 54.25-56.50, few 56.50-57.85; Commercial 3-4 49.00-52.50, few 925-1150 lb. beef breed 48.50-50.25; Cutter 1-2 52.00-54.50; Canner and low Cutter 47.50-50.50.

BULLOCKS: Choice 1000-1250 lb. 65.75-67.75, couple 68.00-69.60; Good 1000-1250 lb. 59.25-63.00.

BULLS: Yield grade 1 1100-1800 lb. 63.50-67.25, few 67.50-70.00, four head 70.75-74.25; yield grade 2 1000-1350 lb. 59.50-63.00.

VEAL CALVES: Vealers mostly steady. Demand good for calves returned to farm.

VEALERS: Few Prime 220-320 lb. 110.00-115.00; Choice 140-300 lb. 95.00-105.00, few 105.00-108.00; high Good and low Choice 120-200 lb. 85.00-100.00, 90-120 lb. 78.00-85.00.

RETURNED TO FARM: Few 90-120 lb. Holstein heifers 160.00-195.00; few 90-115 lb. Holstein bulls 100.00-115.00.

HOGS: Barrows and gilts 75-1.50 lower.

BARROWS AND GILTS: US 1-2 200-240 lb. 40.25-41.10, few 41.25-41.60; US 1 205-245 lb. 42.00-42.50; US 1-3 225-260 lb. 39.50-40.35.

SHEEP: Spring lambs 1.00-2.00 lower.

SPRING LAMBS: Few Choice and Prime 95-110 lb. 65.00-65.50; Good and Choice 50-85 lbs. 62.00-64.00.

SLAUGHTER EWES: Utility and Good 25.00-30.00.

## Vintage Livestock

Paradise, Pa.  
Tues., September 25, 1979  
Cattle Calves Sheep

Today	951	697	35
Last Tuesday	937	721	29
Last Year	839	649	39

CATTLE: Compared to last Tuesday slaughter steers firm to 50 higher, instances 1.00 higher; slaughter heifers steady; cows 3.00-4.00 higher; bullocks and bulls not fully tested. Supply included 64 per cent slaughter steers and 29 per cent cows.

SLAUGHTER STEERS: High Choice and Prime 3-4 1075-1375 lbs. 69.75-72.00, few 72.00-72.50; Choice mainly 2 1000-1300 lbs. 70.50-72.50, about 10 head 72.75-74.00; Choice 2-4 1000-1375 lbs. 67.75-70.00, few 70.00-70.75; high Good and low Choice 2-3 64.75-68.50; Good 2-3 61.50-65.50.

SLAUGHTER HEIFERS: Choice 2-3 850-1050 lbs. 62.10-64.50, few 775-850 lbs. 61.25-62.00.

COWS: Utility and Commercial 1-3 53.25-56.75, about 12 head 57.50-59.50; Commercial 3-4 49.00-53.50; Cutter 1-2 51.00-54.25, few 54.50-55.75; Canner and low Cutter 1-2 49.50-52.50.

BULLS: Few yield grade 1 1100-1800 lbs. 65.00-69.75; few yield grade 2 1000-1350 lbs. 60.75-65.00.

VEAL CALVES: Vealers steady to weak, instances 5.00 lower on Choice. Supply included 370 in graded sale of which 66 per cent sold to return to farm.

VEALERS: Prime 220-330 lbs. 110.00-114.00; Choice 160-

300 lbs. 99.00-110.00, few 120-160 lbs. 92.00-105.00; high Good and low Choice 160-240 lbs. 85.00-100.00, 90-120 lbs. 82.00-89.00, 70-90 lbs. 70.00-85.00.

RETURNED TO FARM: 60 head 100-125 lbs. Holstein heifer 225.00-233.00, 20 head 80-100 lbs. 212.00-213.00, one lot 70-75 lbs. 135.00; 120 head 90-115 lbs. Holstein bulls 123.00-125.00, 25 head 120-125 lbs. 117.50.

SHEEP: Bulk supply Good 65-85 lbs. spring lambs selling 1.00-4.00 lower at 50.00-58.00.

## Lancaster Auction

Lancaster, Pa.  
Wed., September 26, 1979  
Cattle Calves Hogs Sheep

Today	911	26	1248	6
Last Wednesday	1211	63	861	2
Last Year	946	50	1184	0

Wednesday's Auction

850 26 1265 6

Last Wednesday's Auction

838 63 870 2

CATTLE: Compared to Monday slaughter steers weak to 50 lower, some early sales off 1.00; slaughter heifers 50-1.00 higher; cows fully steady; bullocks fully steady; bulls 50-1.00 higher.

SLAUGHTER STEERS: High Choice and Prime 1075-1425 lbs. 68.75-70.00, few 70.00-70.75; Choice mainly 2 1100-1425 lbs. 69.50-71.00; Choice 2-4 975-1350 lbs. 66.50-69.25, few 69.25-69.85; Choice 4-5 1250-1400 lbs. 64.75-67.50; high Good and low Choice 2-3 64.00-67.50; Good 2-3 61.50-65.50.

SLAUGHTER HEIFERS: Choice 2-3 900-1050 lbs. 63.00-67.25; few Good 2-3 850-1050 lbs. 58.00-63.00.

COWS: Utility and Commercial 1-3 54.00-57.25, few 57.50-59.50; Cutter 1-2 51.75-53.75, few 54.00-55.50.

BULLOCKS: Choice 1000-1300 lbs. 64.50-67.00, few 67.00-68.75; Good 1000-1250 lbs. 61.75-65.50.

BULLS: Yield grade 1 1100-1800 lbs. 65.50-70.00, several 70.00-71.75, individual 2020 lbs. 81.50; yield grade 2 1000-1350 lbs. 59.75-65.00.

VEAL CALVES: Insufficient volume for a market test; few high Good and low Choice 70-110 lbs.

72.50-80.00.

HOGS: Barrows and gilts 25-50 higher.

BARROWS AND GILTS: US 1-2 200-240 lbs. 40.75-41.75, few 41.85-42.10; US 1 205-235 lbs. 42.75-43.25; US 1-3 225-260 lbs. 40.25-40.75.

SHEEP: Insufficient volume for a market test.

## New Holland Livestock

Thurs., September 27, 1979

CATTLE: 1238. Compared to last Thursday slaughter steers 50-1.00 lower, instances 1.50 lower; slaughter heifers not fully tested; cows 4-6.00 lower; bullocks not fully tested; bulls 1-2.00 higher. Supply included 63 per cent slaughter steers, 24 per cent cows and 10 per cent bulls.

SLAUGHTER STEERS: High Choice and Prime 3-4 1100-1350 lb. 68.60-70.75; Choice mainly 2 1000-1325 lb. 69.00-71.75, ten head 72.50-73.60; Choice 2-4 975-1300 lb. 66.50-68.85; high Good and low Choice 2-3 64.75-67.00; Good 2-3 60.75-65.50.

SLAUGHTER HEIFERS: Choice 2-3 925-1075 lb. 63.00-65.60, few Good 850-1050 lb. 60.00-63.00.

COWS: Utility and Commercial 1-3 50.00-53.50, few 53.50-54.50; Cutter 1-2 48.00-52.50, few 52.50-53.75; Canner and low Cutter 44.00-48.00.

BULLS: Yield grade 1 1100-1800 lb. 64.50-69.00, few 69.25-71.25; yield grade 2 1000-1350 lb. 60.25-63.75.

VEAL CALVES: 641. Vealers firm to 5.00 higher with high Good and low Choice 70-120 lb. 5-10.00 higher. Demand good for calves to return to farm.

VEALERS: Prime 240-330 lb. 107.00-120.00, few 120.00-125.00; Choice 140-300 lb. 97.00-110.00, few 110.00-116.00; high Good and low Choice 120-250 lb. 90.00-100.00, 90-120 lb. 82.00-92.00 with 70-90 lb. 74.00-85.00.

RETURNED TO FARM: Bulk 90-120 lb. Holstein bulls 100.00-115.00, several 115.00-119.00; Bulk 75-125 lb. Holstein heifers 150.00-190.00, few head 195.00-250.00.

SHEEP: 18. Insufficient volume for a market test, few Utility and Good slaughter ewes 25.00-29.00.

GOATS: 46. Supply mainly mature goats selling at 38.00-45.00 per head.

## Lancaster Weekly

Fri., September 28, 1979  
Cattle Calves

This Week	5800	1500
Last Week	6074	1497
Last Year	6420	1540

CATTLE: Slaughter steers 50 lower, some sales as much as 1.00 lower; slaughter heifers 50-1.00 lower; cows closed the week 4.00-6.00 lower; bullocks not fully tested; bulls 1.00-2.00 higher. Supply included 46 per cent slaughter steers, 14 per cent cows, 6 per cent bulls, 4 per cent heifers with the balance feeder steers held largely for Friday's auction.

SLAUGHTER STEERS: High Choice and Prime 3-4 1100-1425 lbs. 68.60-70.75, few early part of week 71.00-72.00; Choice mainly Grade 2 1000-1325 lbs. 69.00-71.75, around 30 head 72.50-74.00; Choice 2-4 975-1350 lbs. 66.50-69.50, several early part of week 69.50-70.50, high Good and low Choice 2-3 64.75-68.00, Good 2-3 60.75-66.00.

SLAUGHTER HEIFERS: Choice 2-3 900-1100 lbs. 62.00-66.00, few 66.00-68.25; Good 2-3 850-1025 lbs. 57.00-63.00.

COWS: Utility and Commercial 1-3 closed the week at 50.00-53.00, few 53.50-54.50, Cutter 1-2 48.00-52.50,

few to 53.75, Canner and low Cutter 44.00-48.00.

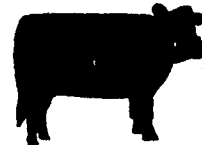
BULLOCKS: Choice 1000-1250 lbs. 64.50-67.00, few 67.00-69.60; Good 1000-1250 lbs. 59.25-64.00.

BULLS: Yield Grade 1 1100-1800 lbs. 64.00-69.00, few 69.00-71.75; Yield Grade 2 1000-1250 lbs. 58.00-63.50.

VEAL CALVES: Vealers firm to 5.00 higher with high Good and low Choice 70-120 lbs. closing 5.00-10.00 higher. Demand good for calves returned to farm.

VEALERS: Prime 220-320 lbs. 107.00-120.00, few 120.00-125.00; Choice 140-300 lbs. 95.00-110.00, few 110.00-116.00; high Good and low Choice 120-250 lbs. 85.00-100.00, 90-120 lbs. 82.00-92.00, 70-90 lbs. 70.00-85.00.

RETURNED TO FARM: Bulk 75-125 lbs. holstein heifers 115.00-215.00, 60 head 100-125 lbs. 225.00-233.00, few head 235.00-250.00; bulk 90-120 lbs. holstein bulls 98.00-119.00, around 120 head 123.00-125.00.



## LEBANON VALLEY LIVESTOCK MARKET, INC.

1 mile East of  
Fredericksburg  
along Route 22  
PHONE:  
JONESTOWN  
865-2881

Sale every Tuesday at  
1:30 P.M. starting with  
feeder cattle and pigs.  
Also Hay Sale every  
Tuesday at 12:30.

## B & R CATTLE CO.

RD1, Marietta, PA  
17547  
Office Phone:  
(717) 653-8164

Specializing In  
Stockers & Feeders  
JOHN BOWMAN  
Ph: (717) 653-5728  
RON RANCK  
Ph: (717) 656-9849

## HAY, STRAW & CORN — SALE —

Every Friday at 12 Noon

## GREEN DRAGON MARKET & AUCTION

RD No. 4 Ephrata, Pa. 717-733-2334  
1 mile North of Ephrata on N. State St.  
Out of State Buyers - Cash or Certified Check Only.

## NEW HOLLAND The Action Auction

AUCTIONS make the difference in  
marketing livestock!

NEW HOLLAND makes the difference  
in auctions!

MONDAY'S AUCTION:  
8.00 A.M. - Fat Hogs  
10.00 A.M. - Horse Sale  
11.00 A.M. - Hay, Straw & Ear Corn  
1.30 P.M. - Fat Steers, Bulls, Cows & Veal

WEDNESDAY'S AUCTION:  
12.00 Noon - Dairy Sale  
1.00 P.M. - Feeder Pig Sale

THURSDAY'S AUCTION:  
11.00 A.M. - Beef Sale  
Order of Sale, Bulls, Fat Steers, Cows, Veal  
4.30 P.M. - Calf Sale

## NEW HOLLAND SALE STABLES INC.

New Holland, PA  
Abram W. Diffenbach, Manager Phone: 717-354-4341



## LANCASTER STOCKYARDS WEEKLY SALES

SLAUGHTER SALES — MON. & WED. 10:00 A.M.  
VEALERS, LAMBS, HOGS — MON. & WED. 11:00 A.M.  
HOG AUCTION — SATURDAY 9:30 A.M.  
STOCKER & FEEDER — FRIDAY 11:00 A.M.

NEXT FEEDER PIG SALE - OCT. 2, 1979

EQUIPPED TO RECEIVE YOUR LIVESTOCK  
24 HOURS A DAY, 365 DAYS A YEAR.

PRIVATE TREATY DAILY

LANCASTER STOCKYARDS, INC.  
(717) 394-2611



## Vintage Sales Stables, Inc.

BULLS, STEERS,  
BUTCHER COWS,  
LAMBS AND VEAL CALVES  
SOLD ON COMMISSION

SALE EVERY TUESDAY - 11 A.M.

HOG SALES

WEEKLY: WED. & SAT. - 9 A.M.

EVERY THURSDAY - 12:30 P.M.

HAY & STRAW SALE

Get calves in early for grading & weighing  
No weight loss

FOR MARKETING INFORMATION  
PHONE 717-768-8204  
HOME PHONE 215-458-5060  
L. ROBERT FRAME, MANAGER

Box 100 Paradise, PA  
10 miles East of Lancaster on Rt 30