

# Poultry Market Reports

## Weekly New York Egg Market

From Friday, September 14 to Thursday, September 20

	Fri.	Mon.	Tues.	Wed.	Thurs.
<b>WHITE</b>					
Jumbo	75	75	75	75	75
Ex Large	68	68	68	68	68
Large	64	64	64	64	64
Mediums	58	58	58	58	58
Pullets	39	39	39	39	39
<b>BROWN</b>					
Large	73-	73	73	73	73
Mediums	Unquoted				
Pullets	Unquoted				
<b>OffGrade</b>					
Large	57	57	57	57	57
Checks	36	36	36	36	36
Breakers	38	38	38	38	38

Tone: Large ample, sales good mediums irregular  
Copyright 1979 Urner Barry Publications

## N. E. Weekly Shell Egg Report

September 11, 1979

Prices paid per dozen Grade "A" Brown eggs in cartons delivered to retail stores:

	Ex. Large	Large	Medium	Small
MASS. +			NOT AVAILABLE	
NEW HAMP.	69-72	66-70	57-61	38-42
Mostly	70-00	68-00	59-00	40-00
R.I.	79-80	77-78	69-70	49-50
VERMONT	77-78	75-85	67-72	-
Mostly	79-83	77-79	69-70	-
MAINE	75-78	73-76	65-68	45-48

## Nest Run Eggs

Prices are from Egg Clearinghouse, Inc., (ECI) Durham, N.H. and reflect trading prices for gradable nest run eggs (GNR) on ECI, a nationwide trading center for producers, packers and marketers. GNR eggs are classified by weight in 30-dozen cases, and traded in lots of either 300 or 750 cases. Prices are FOB buyers dock, and are computed Tuesday and Thursday of each week. This week's prices for each classification were:

Classification	New Weight Per Case	Tuesday	Thursday
Extra Large	51 lbs.		
Class 1 - Large	48 lbs.	49	48
Class 2 - Large	45 lbs.	47	46
Class 3 - Medium	42 lbs.	42	42
Class 4 - Small	39 lbs.	31	31
Breaking Stock	48 lbs.	45	45
Checks	48 lbs.	38	38

## Philadelphia Eggs

September 19, 1979

EGGS: Prices unchanged. Cartoning demand centered on short to barely adequate stocks of extra large and jumbos. Other sizes fully adequate for a fair call. Undertone steady.

Prices to retailers: sales to volume buyers consumer grades white eggs in cartons, delivered: store door.

A Extra Large 63-68½; A Large 62-66½; A Medium 55-58½.

## Eastern Pa. & N.J. Poultry

September 19, 1979

Prices trending slightly lower on light type hens at farm. Offerings ample for a good processor call. Offerings of heavy type adequate for a good interest being stimulated by the up coming Hebrew holidays.

Prices paid at farm: light type hens 8-8¾, mostly 8½-8¾.

F.O.B. Plant: 10½-11, mostly 11.

Heavy Type Hens: TFEWR.

## Baltimore Eggs

September 19, 1979

EGGS: Prices unchanged. Demand good for barely adequate to short supplies of extra large and jumbos, light to fair otherwise for fully adequate offerings of other sizes. Undertone steady.

Cartoned eggs: prices to retailers, state graded (min. one case sale) white.

Grade A Large 68-71  
Grade A Medium 61-64

## New Holland Hay

Monday, September 17

New Holland

Sales Stables

Total 75 loads. All prices per ton unless otherwise noted.

Alfalfa 35-81; mixed hay 36-67; timothy 24-82; straw 32-66; corn 92-101.

## Delmarva Poultry

September 19, 1979

Ready-to-cook movement fair through generally unaggressive. Slaughter schedules remain fairly heavy. Today's LTL asking prices mostly 39-40 on Plant and 40-41 on U.S. Grade A. Advance interest fair though generally taking a wait - see position while awaiting further market developments. Live supplies ample at generally heavier than desired weights. Undertone weak and unsettled.

Current broiler/fryer negotiated prices for immediate delivery includes mostly multiple drop shipments to New York City from Delmarva.

RANGE: U.S. Grade A 39-43½; Plant Grade 39-41½; Premium X U.S. Grade A 46.00.

WTD. AVG.: U.S. Grade A 40.52; Plant Grade 39.34; Premium X U.S. Grade A 46.00.

# Hay Markets

## Regional Hay

(All hay No. 2 and better, prices paid by dealers at the farm and per ton.)

Hay and Straw slow and steady.

Alfalfa 40.00-50.00, few to 65.00.

Mixed hay 35.00-50.00.

Timothy hay 35.00-50.00

Straw 35.00-45.00

Mulch 10.00-30.00

## Good's Hay

Leola, Pa.

Wednesday, September 19

Total 77 loads. All prices per ton, unless otherwise noted.

Alfalfa 40-74; mixed hay 43-87, s'raw 42-68, corn 52-99,

## Green Dragon

Ephrata, Pa.

September 14, 1979

Prices per ton: 16 loads hay and 2 loads straw.

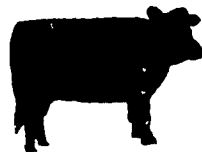
Alfalfa, couple 46.00.

Mixed hay 40.00-52, individual 80.00, few down to 31.00.

Grass, individual's 27.00 & 28.00.

Straw, individual's 54.00 & 61.00.

Ear Corn, 14 loads 100.00-114.00, couple down to 90.00.



**TOP OF THE HOG MARKET**  
DANVILLE LIVESTOCK MARKET  
OLD ROUTE 11, DANVILLE, PA 17821  
717-275-2880

COMING...

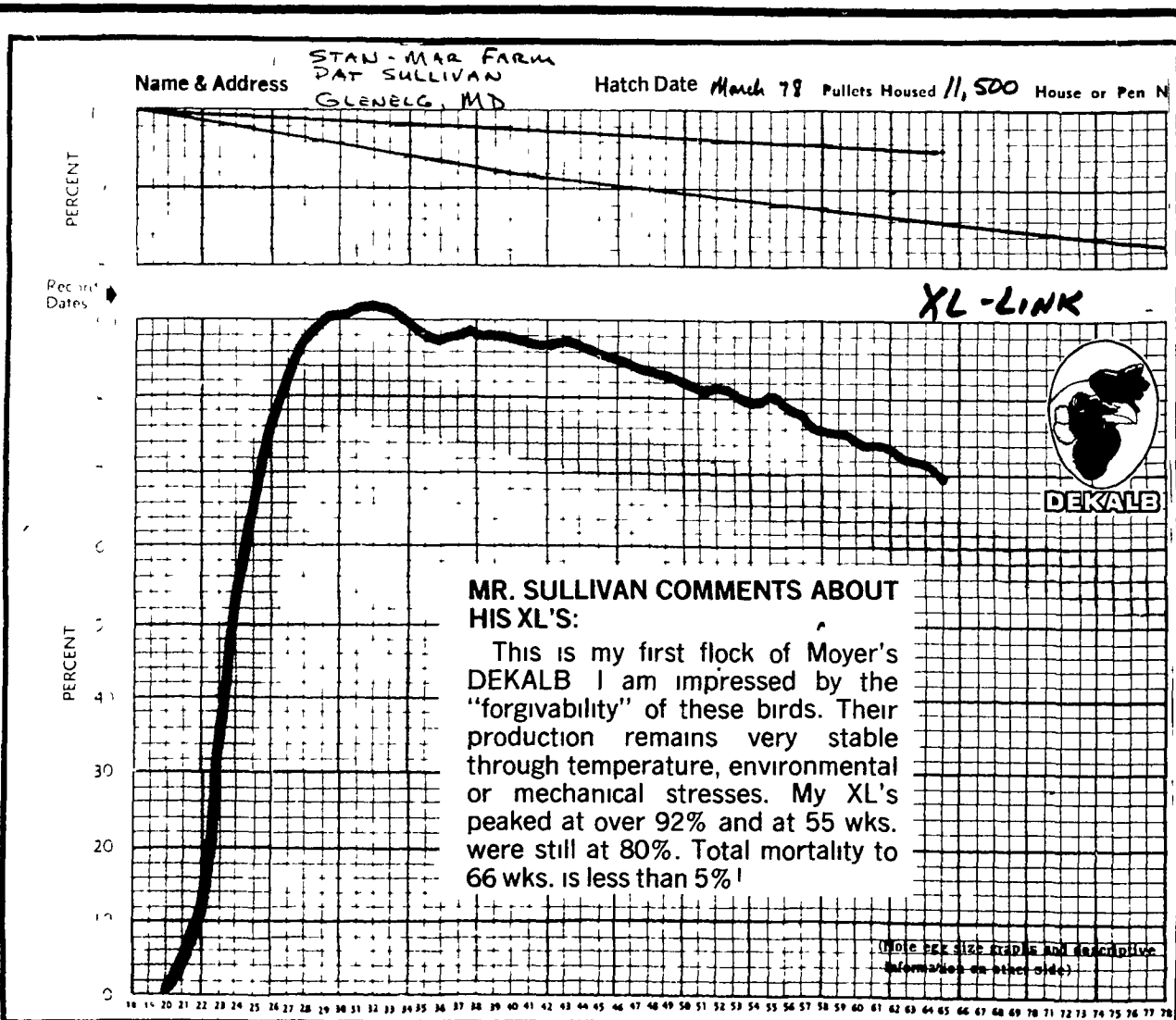
FALL FEEDER CATTLE SALE  
FRIDAY EVENING, OCTOBER 26, 7:00 P.M.

**HORSE SALE HELD 3rd SATURDAY OF THE MONTH**

Market your cattle & hogs the auction way.

Sale every Monday 2 P.M.  
Melvin M. Lehman (Owner)

have a nice weekend...  
**MEET SOMEBODY NEW!**



## Moyer's CHICKS, INC.

DEKALB BROWN & WHITE EGG LAYERS  
Quakertown, PA. 18951  
(215) 536-3155

HUBBARD WHITE MT. BROILERS

# Lancaster Farming

(ISSN 0023-7485)

Copyright 1979 by Lancaster Farming  
P.O. Box 366 - Lititz, PA 17543  
Office: 22 E. Main St., Lititz, PA 17543  
Record-Express Office Building  
Phone: Lancaster 717-394-3047  
or Lititz 717-626-1164

Robert G. Campbell, Publisher  
Kendace Borry Allen, Associate Editor  
Debra Strickler, Associate Editor  
Laurel Shaeffer, Berks County Correspondent  
Joyce Bupp, York County Correspondent

Subscription Price:  
\$7.00 per year; \$12.00 - 2 years  
\$10.00 per year outside of:  
PA, NJ, MD, DE, NY, VA & WV

Established November 4, 1955  
Published every Saturday  
by Lancaster Farming, Lititz, PA  
Second Class Postage paid at Lititz, PA 17543  
(ISSN: 0023-F485)

For address change form or new subscription see Classified Section.

Members of Newspaper Farm Editors Assn., Pa. Newspaper Publishers Association, and National Newspaper Association.