

Sheep show

(Continued from Page 18)
 classes, Troy Ness took the Suffolk champions. Sarah Lau, Loganville, had the

champion Oxfords. South-down champions were shown by Shelly Bankert. Gus Parlett, had the top

Shropshires. In the Hampshire division, Mark Ebaugh took the top placings. Top Dorsets were shown by Laurie Dobrosky. And Jessica Morton had the champion Corriedale ram and Bridget Morton had the champion ewe.



Laura Dobrosky showed the champion pair of Dorsets.



Tom Flory was top 4-H sheep fitter and Lisa Dobrosky was champion 4-H sheep showman.

More pictures page 22

COMMENTS FROM READERS

Dear Editor: We have always felt general were grateful for the privilege to trap on private

Farm and Forest land. However we have come across documented evidence that the Penna. Trappers Association has been directly responsible for introducing H.B. 1150 which would bring a potential \$300.00 fine in case our Watch dog, pet or beagle pursued a deer for the second time. The proposed fine for a first offense is \$150.00.

Personally I wonder are trappers wise in shaking their fists in this manner at those on whom they depend over 50% to pursue their activity?

Few are the rural residents of Pennsylvania who have not at some time felt the unpleasant effects of trapping.

We urge Farmers of Pennsylvania, Pet Owners and rural residents, let your Legislators know your wishes on these matters.

For my part let Section 717; of the Penna. Game Laws as they are.

For those wishing to write Rep. Edward W. Helfrick, B2, Main Capitol Bldg., Harrisburg, Pa. 17120 is one of the members of the Game and Fisheries Committee.

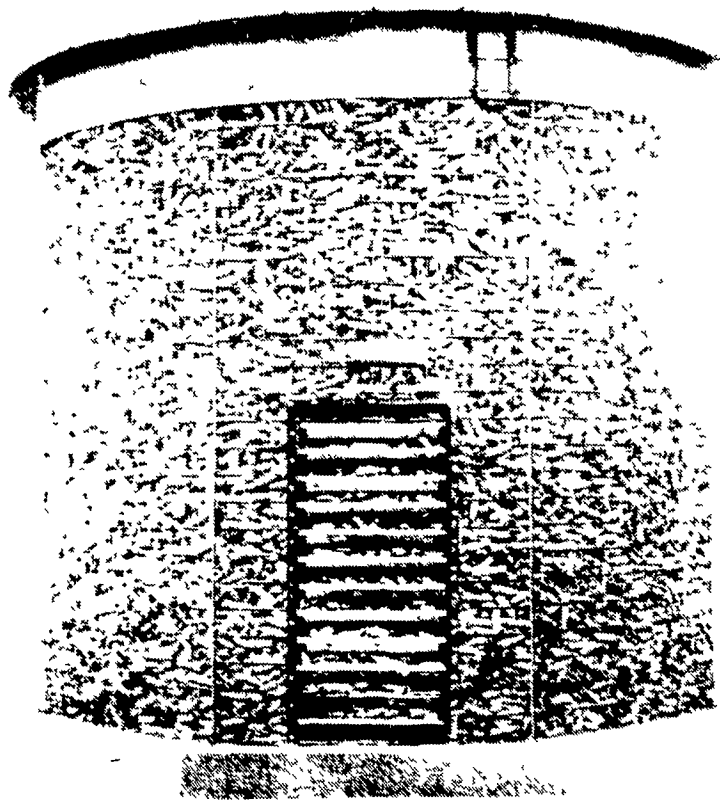
Respectfully,
 John Kutz



SPEEDY CORN CRIBS

BAR-LOK CONSTRUCTION

Cut Corn Crib Erection Time!
 Store More Corn For Less Money!



No other corn crib goes up as fast or as easy as the Speedy Crib with roof rafters. This feature, plus Bar-Lok side panels, minimizes corn crib erection time.

There's a Speedy Crib for every farm need, priced right for every budget.

- **CHOICE OF 900, 1200 or 1700 BUSHEL SIZES**
 One of them is just right for your particular storage needs
- **5 OR 2 GAUGE WIRE MESH SIDE PANELS**
 The Speedy 5 gauge crib won't bulge or sag — stands straight and tall year after year. For extra strength and durability, get the 2 gauge crib. It outlasts other cribs even with full capacity loads
- **STEEP (35°) or EXTRA STEEP (45°) PITCHED ROOF**
 You don't have to climb inside the crib to kick the corn to the edges. You fill right to the top with no wasted space
- **SPECIAL 1700 BUSHEL CRIB**
 Bottom two thirds 2 gauge wire mesh, top one third 5 gauge wire mesh. Gives extra strength where the stress is the greatest
- **OPTIONAL WEATHER-BAN**
 Two foot wide band of heavy gauge galvanized sheet — prevents rain and snow from entering top of the crib

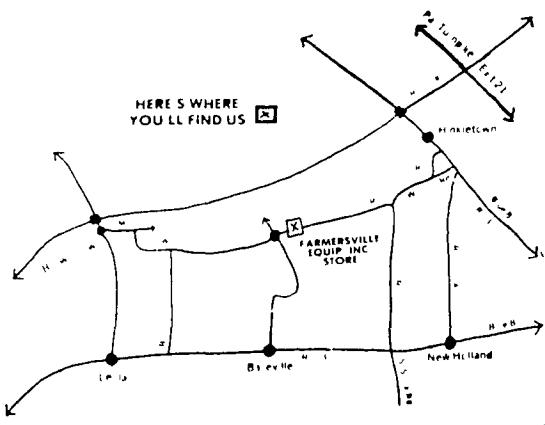
EASY TO ERECT!



Step 1 Bar Lok Construction saves you time — gives you a strong sturdy crib. Crib wire panels are interlaced to form an eye. A 1/2" rod is then inserted through the eye and pushed down to the foundation. Easy, simple, fast construction.



Step 2 Rafters are bolted to assembled rafter ring. Now you're ready to put the roof panels on. Rafters assure you of proper roof panel placement the first time. No wooden framework to build.



All Models In Stock

FARMERSVILLE EQUIPMENT INC.

RD 4, Ephrata, PA

717-354-4271

HOURS

Mon., Tues., Wed., Fri. — 7:30-5:30
 Thurs. — 7:30-9:00
 Sat. — 7:30-3:00



LIGHT & RIGHT

for rugged work

- Cellulose cushion insole
- Cushion crepe sole and heel
- Rugged full-grain leather upper



BOOKS
SHOE SERVICE
 107-E STATE ST
 QUARRYVILLE, PA 17566
 717-786-2795