

# Roasting grain helps increase profits

**LEBANON** — Anyone who is in the production of livestock or poultry for profit should be feeding rations of roasted grains and high-energy roasted soybeans. It is profitable for everyone from the smallest family farm to the largest cattle ranch to feed roasted grains. A pound of roasted soybeans

is exchanged for a pound of soybean meal.

Dry heat at a high temperature destroys the toxic enzymes in the raw soybeans which interferes with digestion and growth in all animals. The beans become highly palatable and the new-found energy goes to work. Soybeans are

naturally well balanced with body building protein, and naturally high in essential vitamins, mineral and trace elements. It also changes the fat from saturated fat to unsaturated fat.

The roasting of corn destroys mold and changes the starches to dextrin, a simple form of carbohydrate that can be readily digested and more freely utilized by the animal. The process of roasting in the open flame gives sterilization of the grain, reducing toxicity. Herbicide carryover microscopic mold and fungus are greatly reduced. This process enables you to feed out-of-condition grain.

The oil is the most important material retained in a whole roasted soybean. It is a tremendous source of concentrated energy. By roasting it, it is converted to a more digestible form.

The second most important material remaining in the bean is soy lecithin. Lecithin increases the speed and degree of emulsification, stabilizes vitamins, is a natural source of choline and inositol, is a good source of "available" phosphorus, provides 2 1/4 times as much energy as a carbohydrate, and is an antioxidant property to deter rancidity and keeps feed fresh and palatable.

In recent years, dairymen have become aware of the need for meeting the energy requirements of his cows. The roasted soybean is making a fantastic breakthrough. Dairymen

consistently report an immediate increase in buterfat from 2-6 tenths of 1%. This means approximately 10 cents per hundred increase.

Packing extra energy into the ration has consistently increased the herds production average with a decreased amount of feed. This means more milk on less feed. Most dairymen report a general improvement in herd health which results in lower vet bills. The decrease in vet bills alone have covered the roasting costs in most cases. Roasted soybeans reduces aborting and produces healthier calves. Slicker coats improve the over all herd appearances.

Roasting of corn for hogs has additional benefits. Mold that cannot be seen with the naked eye as well as mold that can be seen is destroyed by roasting and eliminates tail biting and restlessness. Roasted corn requires only half as much power to grind as raw corn. Roasting corn removes moisture and eliminates drying. Daily weight gains are greater and hogs are ready for market earlier on less feed.

Feeder pigs get off to a better, faster start with fresh roasted beans. Hogs fed roasted grains have a consistent grade increase of 10%, a profit of two to three cents per pound live weight. According to both tests and testimonials, combining roasted soybeans and roasted corn in the ration, gives hog producers a

greatly improved feed efficiency.

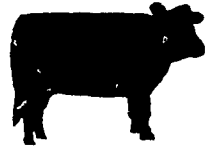
Roasting beans and corn for poultry produces excellent benefits, better health grade and yield, while enhancing the broiler's flavor. Commercial egg layers maintain a better and longer lay with fine quality eggs, with a savings of four pounds of feed per one hundred hens per day.

Breeders have better production, hatchability, and liveability. Chicks, ducklings and goslings, fed roasted grains where molds are destroyed and toxins are retarded are more contented, healthier and happier.

An Iowa state test on feeder cattle showed undigested whole kernel passage to be 14 per cent for raw corn as compared to

only 2 per cent for roasted corn. Several other tests show more of the steers on a roasted grain ration grade higher on the market.

Roasting soybeans for protein means you can raise your own soybeans on your own farm, and have them roasted with a portable roaster right on your own farm. This means a savings on transportation and time, no delivery charges, higher nutritive value and the growth stimulating properties of soybean oil and lecithin in the feed.



## Livestock market and auction news

(Continued from Page 9)

**FEEDER CATTLE:** Choice 300-550 lbs. steers 85.00-110.00; 600-850 lbs. 70.00-85.00. Good 300-650 lbs. heifers 60.00-85.00. Few Good & Choice 300-600 lbs. bulls 65.00-85.00.

**CALVES 4112.** Compared with 4018 head last week and 4468 head a year ago. Vealers grading Choice & Prime steady to \$3 lower, Standard & low grade 1.00-5.00 higher. Prime vealers 106.00-122.00, Choice 96.00-105.00, Good 90.00-105.00, Standard & Good 90-110 lbs. 80.00-92.00; 70-90 lbs. 70.00-86.00, Utility 55-90 lbs. 50.00-75.00

**FARM CALVES** Hol Bulls 85-120 lbs 85.00-120.00 Hol Heifers 85-140 lbs 100.00-240.00 mostly 150.00-200.00.

**HOGS 8240** Compared with 8434 head last week and 7051 head a year ago. Barrows and gilts 50-150 lower. US No. 1-2 200-240 lbs. barrows & gilts 39.50-42.00, few 43.50, No. 1-3 195-250 lbs.

33.50-41.00, No. 2-3 190-260 lbs. 37.00-39.75. SOWS steady to \$2.00 lower. US No. 1-3 300-515 lbs. sows 27.00-35.00, No. 2-3 400-700 lbs. 23.00-28.00. BOARS 23.00-32.00.

**FEEDER PIGS 1823.** Compared with 1871 head last week and 1719 head a year ago. Steady to strong. US No. 1-3 25-35 lbs. feeder pigs 10.00-20.00 per head, No. 1-3 35-50 lbs. 18.00-32.00.

**GRADED FEEDER PIGS 2095.** ALL SALES CWT. Compared with 4434 head last week, and 1507 head a year ago. Feeder pigs 4.00-10.00 higher. US No 1-2 25-40 lbs 68.00-79.00, 40-50 lbs 64.00-75.00, 50-65 lbs 57.00-71.00 65-85 lbs 48.00-55.00, US No 2-3 25-40 lbs 62.00-74.00, 40-55 lbs 49.00-66.00, few 60-95 lbs 43.00-49.00

**SHEEP 708** Compared with 1917 head last week and 819 head a year ago. Spring sl. lambs steady to 1.50 lower. Choice 70-110 lbs. 60.00-68.50, Good 60-105 lbs. 55.00-62.00. Slaughter ewes 20.00-31.00.



## Figure it for yourself. You keep milk production up and feed costs down with our dairy pre-mixes.

Wouldn't you like to put some of that money you spend on commercial protein supplements in your own pocket?

That's the goal behind an alfalfa, grain and Vigortone Dairy Pre-Mix feeding program. It helps you take maximum advantage of the protein and energy already in your home-grown feedstuffs.

And legume roughage is a good source of protein; but it's low in phosphorus and other nutrients so important to the needs of all dairy cows.

That's where Vigortone Dairy Pre-Mixes help. These potent pre-mixes are specially formulated for the feeds grown on your farm and contain the proper amount of phosphorus to balance the calcium content of your legume roughages.

Vigortone Dairy Pre-Mixes also furnish the minerals, vitamins and other nutrients so important to good nutrition and better milk production. Special ingredients promote proper digestion and assimilation of rations, so your cows benefit more from less feed.

Your Vigortone Dealer can help you figure the energy and protein supplied by your own grain and roughage. You'll know from the start how much, if any, additional protein you'll need.

Now is the time to compare. See your Vigortone Dealer soon. He's ready to compare the performance of Vigortone's cost-saving dairy feeding programs with any other you name.

# VIGORTONE PRE-MIXES It's Time To Compare!

50 branch offices — 6000 dealers — 3 manufacturing plants

### FOR FURTHER INFORMATION CONTACT YOUR LOCAL REPRESENTATIVES LISTED BELOW

**LEON B HERSHEY**  
Box 265 Paradise, PA  
717-442-4807

**B RUSSELL SAUDER**  
R5 Box 322A Manheim PA  
717-665-4153

**JASONE MILLER**  
169 Strasburg Pike  
Lancaster PA  
717-393-7244

**AMOS HURSH**  
Lititz RD#4, PA 17543  
717-733-6776

**WM J YODER**  
Rt 2 Box 367  
Narvon, PA 17555  
717-354-0497

**PAUL BITTNER**  
Germansville, PA  
215-767-7140

**H MELVIN CHARLES**  
R1 Washington Boro PA  
717-684-5783

**JAMES STUTZMAN SONS**  
R3 Kutztown PA  
215-683-7198  
215-682-2624

**RALPHE BRUNGART**  
Loganton, PA  
717-725-2355

**WERTZ BROTHERS**  
R5 Danville, PA  
717-275-4407

**CHESTER SOLTYS, JR**  
Spring City, PA  
215-948-3647

**SHERWOOD A WITMER**  
Box 138 Berrysburg, PA  
717-362-8823

**THOMAS R WORTHINGTON**  
R3 Muncy, PA  
717-546-2313

**WILMER J WEAVER**  
R1 Fredericksburg PA  
717-865-6710

**J CLYDE BRUBAKER**  
2418 Harrisburg Pike  
Lancaster, PA  
717-898-8984

**RON HERSHEY**  
RD#2 Gap, PA 17527  
717-442-8573

**WALTER L HAY**  
RD 3 Gettysburg, PA  
717-334-1592

**ELAM G HOOVER**  
R2 Box 531 Reading, PA  
215-926-2908

**ELWIN H REAM**  
Hughesville PA  
717-584-4085