

BROWNSTOWN AGRI LOAN CORP.

FARMERS ARE OUR ONLY CUSTOMERS —
SO WE TREAT THEM WITH SPECIAL CARE!

- Exclusive Lending To Farmers
- Dependable Source Of Funds
- Personal Service On Farm Or In Office
- Confidential Service
- Terms To 7 Years
- Repayment Schedules To Meet Farm Income



BROWNSTOWN AGRI LOAN CORP.

Brownstown Nat'l. Bank Building
Main & State Sts., Brownstown, Pa. 17508

Call or Visit:
BOB ZOOK
717-656-2951

York Chamber of Commerce to sponsor agri-business tour

YORK — Chester County agriculture will be the focal point of this year's York Area Chamber of Commerce's agri-business tour. Monday, October 22 is the tour date, with buses scheduled to leave the Queensgate Shopping Center at 12:30 p.m. and return at 8:30 p.m.

Operations to be visited are J. H. Thompson, Inc., C. P. Yeatman and Sons, and the White Horse Grain Co., Inc.

J. H. Thompson, Inc., is a greenhouse and cut flower operations that's been in production since 1908. Approximately four million fresh cut roses, in eight hybrid tea varieties and eight sweetheart varieties.

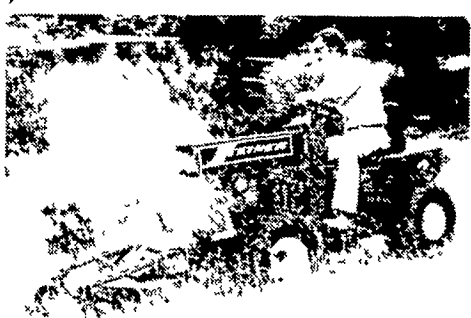
An Avondale mushroom business was begun by the C. P. Yeatman family in 1921, with the third generation in management today. Included are 44 mushroom doubles, or houses, with 285,000 square feet yielding four crops annually, of about three and one-half million pounds of the fresh fungus.

Company is located at Cochranville and consists of a 200,000 bushel storage area with drying capacity of 1,500 bushels per hour. Mostly corn, small grains and soybeans go through the custom drying and marketing business, which recently added a fertilizer manufacturing and custom drying service.

Tickets are \$14 and include dinner at the Amish country's Harvest Drive Restaurant. Reservations and check may be sent to the York Area Chamber of Commerce, P. O. Box 1229, York, Pa. 17405.

SEPTEMBER FAIR DAYS SALE

STEINER 4x4/16 HP-UTILITY TRACTOR



FEATURES:

- ★ 16 h.p. Twin Cylinder Engine
- ★ Hydrostatic Transmission
- ★ 2 Speed Transaxles
- ★ Articulating Frame Steering
- ★ Power Steering
- ★ Hydraulic Lift
- ★ 12 Volt Electric System
- ★ Low Center of Gravity
- ★ Length 64" Width 42"
- ★ Height (steering wheel) 44"

STEINER ATTACHMENTS

48" MOWER DECK
60" MOWER DECK
3 POINT LIFT
(Category "0")

48" DOZER BLADE
48" SNOWBLOWER
12" PLOW

CULTIVATOR
PLANTER
SCRAPER

*see dealer for additional equipment

BREAK THE LOG JAM WITH... HYDRA-SPLITTER

LOG SPLITTERS

Dependable/Economical/Easy to use

10 MODELS AVAILABLE

ALL MODELS HAVE:

- 180 Day Warranty
- Steel "I" Beam Construction
- Hardened-Heat Treated Slim-Cut Wedge
- 5 H.P. Briggs & Stratton Engines
- Coordinated PCE System (Pump Cylinder Engine)
- Easy Maintenance

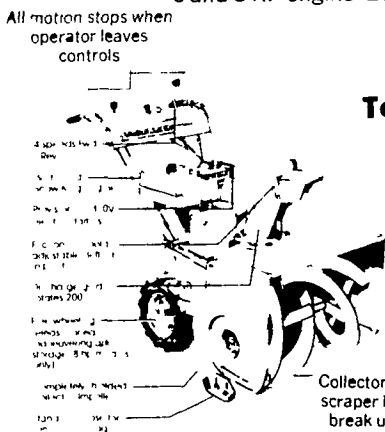


New Gilson rear-tine tiller



Brrr...Winter.
A Good Reason for Jacobsen
The Jacobsen Imperial
6 and 8 HP engine 26", 30" cleaning width

Order Your
Snowblower
Today to Assure
Delivery

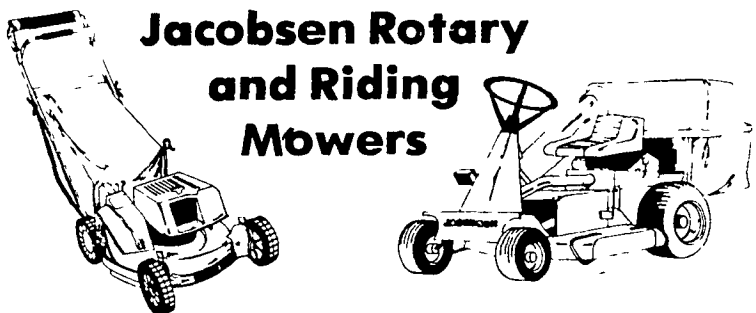


JACOBSEN
SNOW THROWERS



Collector is set ahead of
scraper bar to beat and
break up packed snow

Jacobsen Rotary and Riding Mowers



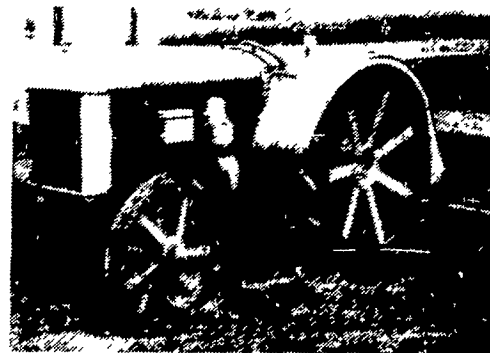
SEE THESE PRODUCTS
ON DISPLAY AT
THE EPHRATA FAIR
SEPT. 25 - 28
LOCATED IN TENT CITY
WE WILL DEMONSTRATE.

WES STAUFFER SMALL ENGINES

RD 3, EPHRATA, PA
717-733-9174 or 717-733-0809

1/4 Mi. S. of Rt. 322 on Pleasant Valley Rd., Ephrata Exit, New Rt. 222

FOR SALE



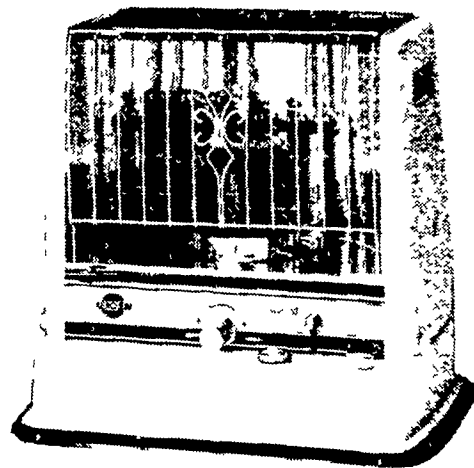
1922 FORDSON TRACTOR
Runs Good, Excellent Condition, Tractor
Manual and Spare Parts List. Manual Included.

\$2500

PHONE: (717) 656-2366



THE WORLD'S FINEST PORTABLE HEATERS



RADIANT 10

The long-burning champion of the Kero-Sun line Burns over 30 hours on less than two gallons of fuel Pushbutton built-in battery powered igniter Protected in event of tip-over by automatic shutoff Cooktop White baked-enamel finish Clear view fuel gauge. Compact and fully portable Dimensions: 21"W x 15 1/4"H x 19"H. Radiant and convection heat. Output 9,400 BTU/hour

Puts the WARM where you want it!

SEE US AT THE EPHRATA FAIR
SEPTEMBER 25-29
Located in North State Street

Bowman's Stove Shop

RD 3, Napierville Road Tues, Wed Sat 9-5
Ephrata, PA 17522 Thurs Fri 9-5
Follow the signs from the Muncy exit
light at Hinkletown

717-733-4972

Financing Available

