

## Livestock market and auction news

### Baltimore USDA

September 10, 1979

**CATTLE 300:** Not enough sales steers and heifers for a market test. Cows 1.00-1.25 higher. Bulls, firm to 1.00 higher. Supply 65% cows, 15% scattered lots steers and heifers, balance few feeders and bulls.

**SLAUGHTER STEERS:** Package Choice 3-4 1038 65.50; few Good 2-4 1260-1465 lbs. 61.00-63.25.

**SLAUGHTER HEIFERS:** Several Choice 3-4 915-990 lbs. 62.50-63.25; few Good 980-1050 lbs. 57.50-59.50.

**COWS:** Early sales Utility 2-3 46.75-52.50, few to 53.60; Cutters 43.00-50.00.

**BULLS:** Few YG 1-2 1130-1890 lbs. 58.00-65.75.

**FEEDER STEERS:** Load Large Frame #1 muscle thickness 1135 lbs. 63.45; few Medium Frame 1 and 2 800-915 lbs. 64.50-72.00; couple lots Large Frame #3 Holsteins 335-455 lbs. 77.50-78.00.

**FEEDER HEIFERS:** Several Large Frame #1 muscle thickness 320 lbs. 88.00-91.50.

**HOGS 800:** Barrows & Gilts 50 cents, instances 75 cents higher than last Wednesday. US 1-2 200-240 lbs. 40.75-41.00, few lots 41.25; US 2-3 230-260 lbs. 39.75-40.75.

**SOWS:** 1.00 Higher. US 1-3 300-600 lbs. 28.00-29.00.

**VEAL AND CALF AUCTION:** 75 Choice 130-295 lbs. vealers 95.00-108.00; few Good 185-250 lbs. 83.00-85.00; Good & Choice 90-110 lbs. 73.0-86.00; 65-90 lbs. 61.50-75.00. Choice calves 275-295 lbs. 89.00-95.00; few calves returned to farm 72.00-78.00; couple heifers 95.00-110.00.

**SHEEP AUCTION:** Choice & Prime Spring lambs 105-107 lbs. 63.75-64.50; several Utility and Good slaughter ewes 22.50-26.50.

### Joliet Cattle

September 13, 1979

**CATTLE:** Friday through Wednesday's salable receipts 4,000; 4 days last week 3,624; same period last year 5,882. Trading slow on Monday; turned moderately active on Wednesday. Slaughter steers closed the week 1.50 to 2.50 higher than Wednesday of last week. Slaughter heifers closed the week 1.00 to 1.75 higher. Cows ended the week 1.00 to 2.00 higher.

**SLAUGHTER STEERS:** Mixed high choice and prime 3-4 1100-1350 67.50-68.25; 1 load 68.75 Monday; 69.00-69.50, 2 loads 70.00 Wednesday. Choice 2-4 1000-1300 66.50-68.00 Monday; 68.00-69.00 Wednesday. Mixed good and choice 2-3 1000-1250 65.50-66.50 Monday; 67.00-68.00 Wednesday. Mixed good and choice Holsteins 1300-1500 59.50-60.50 Monday.

**SLAUGHTER HEIFERS:** Mixed choice and prime 3-4 950-1100 65.50-66.00; 2 loads 66.25 Monday; 67.50, 1 load 67.75 Wednesday. Choice 2-4 900-1005 64.50-65.50 Monday, 66.00-67.50 Wednesday. Mixed good and choice 2-3 800-1000 63.00-64.50 Monday; 64.50-66.00 Wednesday.

**COWS:** Cutter & utility, few commercial 1-3 49.00-52.00 Monday; 50.00-53.00 Tuesday; 50.00-52.50 Wednesday.

### Middleburg Auction

Middleburg, Pa.  
September 11, 1979

**CATTLE 274.** Compared with last week's market: High Choice and Prime slaughter steers 68.00-71.35, one at 76.00, Choice 67.00-70.85, Good 65.00-67.00, Standard 62.00-65.00, Utility 58.00-62.50. Choice slaughter heifers 65.00-70.25, Good 60.00-65.00, Standard 55.00-60.00. Utility and Commercial slaughter cows 48.00-51.25, Cutters 46.00-49.75, Canner and Low Cutters 40.00-46.00, Shells down to 35.00. Choice slaughter bullocks 68.00-71.75, Good 65.00-68.00. Yield Grade #1, 1200-1985 lbs. slaughter bulls 60.00-66.50, #2 800-1200 lbs. 55.00-60.00.

**CALVES 149.** Prime vealers 110.00-118.00, Choice 100.00-110.00, Good 90.00-100.00, Standard and Good 90-110 lbs. 80.00-90.00, 70-90 lbs. 70.00-80.00. Farm Calves: Holstein bulls 95-115 lbs. 100.00-120.00; Holstein heifers 80-150 lbs. 100.00-197.50.

**HOGS 662.** US No. 1-2 200-230 lbs. barrows and gilts 41.00-42.10, No. 1-3 190-250 lbs. 40.00-41.00, No. 2-3 190-270 lbs. 38.75-40.00. US No. 1-3 400-550 lbs. sows 26.75-32.75. Boars 200-800 lbs. 23.00-30.00.

**FEEDER PIGS 461.** US No. 1-3 10-20 lbs. feeder pigs 10.00-18.00 per head, No. 1-3 20-40 lbs. 18.00-25.00, No. 1-3 40-60 lbs. 25.00-35.50 per head.

**SHEEP 20.** Choice 90-100 lbs. spring slaughter lambs 60.00-64.00, Good 70-90 lbs. 50.00-60.00.

### Martinsburg Auction

Martinsburg, Pa.  
September 10, 1979

**CATTLE 204.** Choice slaughter steers 65.00-69.75, Good 63.00-65.00, Standard 62.00-64.00, Utility 58.00-62.00. Choice slaughter heifers 62.00-66.00, Good 58.00-62.00, Standard 56.50-60.00, Utility 52.00-55.00. Utility & Commercial slaughter cows 50.50-53.00, few to 55.00, Cutters 47.00-50.00, Canner & Low Cutter 43.00-47.00, Shells down to 42.00. Choice slaughter bullocks 63.00-67.00, Good 62.00-64.00, Standard 60.00-62.00, Utility 57.00-60.00. Yield Grade #1 slaughter bulls 62.00-67.50; yield grade #2 59.00-62.00. Few Medium 300-600 lbs. feeder steers & bulls 68.00-103.00.

**CALVES 309.** Choice vealers 110.00-121.00, Good 98.00-105.00, Standard & Good 70-90 lbs. 65.00-95.00. Farm calves, holstein bulls 90-120 lbs. 105.00-130.00, 70-90 lbs. 80.00-110.00; holstein heifers 80-130 lbs. 90.00-200.00.

**HOGS 384.** US No. 1-2 barrows & gilts 41.00-42.20, few to 42.50, No. 1-3 39.00-41.00, No. 2-3 38.50-40.00, No. 1-3 130-185 lbs. 32.50-38.00. US No. 1-3 sows 31.50-33.50, No. 2-3 26.50-32.00. Boars 24.00-30.00.

**FEEDER PIGS 58.** US No. 1-3 20-35 lbs. feeder pigs 15.00-28.00 per head, No. 1-3 35-50 lbs. 18.00-35.00 per head.

**SHEEP 15.** Few Choice spring slaughter lambs 60.00-65.00.

### Dewart Auction

Dewart, Pa.  
September 10, 1979

**CATTLE 250.** Compared with the market 2 weeks ago; Choice No. 2-4 950-1200 lbs. slaughter steers 64.75-68.10, few to 69.00, Good 62.00-65.00, Standard 57.00-61.00, few Utility 56.00-57.00. Few Choice slaughter heifers 63.25-68.85, few Good 59.00-60.00. Utility & Commercial slaughter cows 48.00-52.75, couple to 54.00, Cutters 47.75-52.00, Canner & Low Cutter 44.50-48.00, Shells down to 42.00. Few Good slaughter bullocks 66.60-69.50. Few Yield Grade #1 950-1850 lbs. slaughter bulls 60.00-66.85. Few Good 550-700 lbs. feeder steers 63.00-69.50; one large lot Choice 250-350 lbs. feeder heifers 70.00-81.00.

**CALVES 163.** Few Prime vealers 112.00-115.00, Choice 100.00-110.00, Good 90.00-100.00, Standard & Good 75-110 lbs. 79.00-92.00. Farm calves, holstein bulls 95-125 lbs. 88.00-122.00; holstein heifers 75-145 lbs. 100.00-190.00.

**HOGS 560.** US No. 1-2 195-235 lbs. barrows & gilts 40.25-41.25, couple lots 41.75, No. 1-3 190-240 lbs. 37.50-40.35, No. 2-3 185-250 lbs. 37.00-38.00, No. 1-3 150-185 lbs. 34.50-38.50. US No. 1-3 275-575 lbs. sows 27.50-33.00. Boars 25.00-30.00.

**FEEDER PIGS 199.** US No. 1-3 12-20 lbs. feeder pigs 11.00-15.00 per head, No. 1-3 25-35 lbs. 16.00-27.00, one lot No. 1-3 60 lbs. 32.50 per head.

**SHEEP 18.** Choice 80-100 lbs. spring slaughter lambs 60.00-67.00.

### Special Market

Special Slaughter  
Cattle Sale  
Rockingham, Va.  
September 6, 1979

There were 282 head sold. All cattle were graded by the Representatives of the VDACS's Division of

Markets, Livestock Section on USDA standards and sold by the hundredweight.

Choice Steers 900-1200 lbs. 63.00-66.10; Singles 1025-1385 lbs. 62.75-65.25; Good Steers 925-1225 lbs. 61.40-65.90; Singles 900-1300 lbs. 59.50-65.50; Choice Heifers 900-1050 lbs. 61.00-62.85.

## J. B. KELLER & BRO. DAIRY COWS



Mount Joy, Pa. 17552

### REGISTERED HOLSTEIN COWS AND HEIFERS

**WHIRLHILL KINGPIN,** 1st calf due Oct. 21, 1979 to Poverty Hollow Milestone. Dam-GP 82 Transmitter 5-1, 341, 18,593, 735, 3.9. Gr. Dam GP 80 Osborndale King Ink Fobes 11-1, 360, 19,365,781, 4.0.

**GFB ABC IVAN SAM-TWIN,** 3rd calf due Nov. 18, 1979 to Arlinda Jet Stream 3-5, 344, 17,945, 648, 3.6.

**METCALFS TELSTAR CITATION-RED,** 3rd calf due Oct. 14, 1979 to Semrads R Maple Jupiter Red 2-11, 260, 12,885, 428, 3.3.

**OAK-HILL RANCH ASTRO MAN,** 4th calf due Oct. 5, 1979 to Apollo Rocket 4-0, 320, 14,276, 529, 3.7. Dam-Marqus 6-0, 346, 21,353, 714.

**ELMCROFT PONTIAC CHIEFTAIN GP** (Canadian cow) 3rd calf due Oct. 12, 1979 to Leadville Prestar 3-0, 305, 14,121, 559, 3.9.

**FLEMINGDALE PERSEUS MARK GP** (Canadian cow) 2nd calf due Oct. 21, 1979 to Sheik 2-0, 305, 13,680, 514, 3.6.

**ASHAWAUG ADMIRAL OF HILLSIDE GP** 84 5th calf due Nov. 15, 1979 to Transmitter 305, 16,710, 627, 3.8.

**LANTLAND ROYAL MASTER HANK** 2nd calf due Oct. 10, 1979 to Amity Acres Copyright Lash 2-5, 339, 11,211, 467, 4.2.

**KANZABROOK MATT CARLO** 1st calf due Oct. 20, 1979 to Bis-May Astro Jupiter. Dam-Tidy Burke Transmitter.

**FOND MATT** (Gr. Dtr.) 1st calf due early Oct.

**PAWNEE FARM ARLINDA CHIEF** (Gr. Dtr.) 1st calf due early Oct. Dam GP 83 Rockman (Gr. Dtr.) 3-7, 338, 15,288, 560, 3.6. Gr. Dam VG 87 Rosafe Citation R (Gr. Dtr.) 7-1, 380, 24,854, 1,007, 4.1.

**TIHO KIT BUILDER GP** 84 2nd calf due Nov. 30, 1979 to Jemmi 2-0, 281, 12,159, 388, 3.2. Dam Fleetridge Monitor 3-2, 329, 24,130, 930, 3.8. Next-4-0, 308, 17,010, 645, 3.8.

**HARRISBURG GAY IDEAL** 1st calf due Feb. 28, 1980 to Redwood Romona Moonshot. Dam Mello-Var Double Sharon 6-5, 308, 24,907, 843.

**PENSTATE IVANHOE STAR G-79** 3rd calf due Nov. 27, 1979 to UK Sensation 2-8, 362, 16,039, 576, 3.6.

**ROUND OAK RAG APPLE ELEVATION GP** 80, 2nd calf due Sept. 16, 1979 to Penmar Apollo topper 2-4, 365, 19,866, 723, 3.6.

**ROUND OAK RAG APPLE ELEVATION GP** 82 3rd calf due Dec. 7, 1979 to DE-WA-See Carljo Chieftain. Dam 82 pt. Kingpin.

### REGISTERED HOLSTEIN INVESTMENT HEIFERS (OPEN)

**PACLAMAR ASTRONAUT** born 9/27/78

**RANSON RAIL PACEMAKER** born 3/20/79

**JET STREAM** born 9/2/78

### GRADE COWS

Dozen Grade cows bred for Oct. and Nov.

### REGISTERED HOLSTEIN BULLS

**ROUND OAK RAG APPLE ELEVATION** born 9/7/78. Dam EX-90 Our Family Man 3-8, 305, 15,282, 583, 3.9. Gr. Dam VG 86 Ken-Mel Fobes Ormsby 7-4, 305, 20,250, 717, 3.5. Next-VG 85 Ken-Mel Osborndale Fobes 6-0, 318, 18,258, 723, 3.8.

**PACLAMAR BOOTMAKER** born 8/13/78. Dam VG 87 Paclamar Astronaut 2-8, 305, 14,646, 609, 4.2.

**RANSON RAIL PACEMAKER** born 1/14/78. Dam GP 80 Paclamar Astronaut 4-5, 376, 23,428, 826, 3.5.

**ENG-AMER IVANHOE JERRY** born 12/31/78. Dam-Charncross.

**HILLHAVEN STANDOUT JOB** born 5/15/78. Dam Admiral Imperial Chief 4-1, 362, 17,319, 678, 3.9.

Transportation and financing available.

**STEVE KELLER**  
717-653-2284

**BOB KELLER**  
717-653-1523

Office: 717-653-4851

## OPEN HERDBOOK ATTENTION GRADE DAIRYMEN

The Red & White Dairy Cattle Association accepts grade Red & Whites, Black & Whites and Colored cattle in our grade-up program. This is a complete program including permanent identification, classification and breed promotion. Over 700 members and 17,500 head registered.

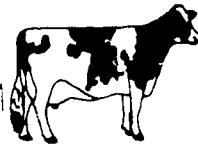
Free information on request - Write Or Call Today



"BRIGHTEN YOUR FUTURE"

**Red & White Dairy Cattle Association**

Box 63L, Crystal Spring, PA 15536  
Phone 814-735-4221



2-7FC

## LEESPORT MARKET & AUCTION, INC.

North end of Leesport

Turn East off Route 61

"WHERE FRIENDS MEET"



**BERKS COUNTY'S ONLY WEEKLY  
CATTLE & SWINE AUCTION —  
WEDNESDAY AT 1 P.M.**

**FARMER'S MARKET Every Wednesday,  
12 NOON TO 9 P.M.**



Garden Fresh Fruits & Vegetables - Bakery Fresh Cakes, Pies and Buns  
- Butcher Fresh Meats & Cheese - Sporting Goods - Clothing - Furniture -  
Jewelry - Used Items & Collectibles.

PHONE: 215-926-1307

LEROY WEIST & JOHN WEIST, MGRS.