



Ever think you'd like to be a lumberjack? Well, people had the chance last weekend to see just how quickly they could scale this tree trunk.

## Woodsmen

(Continued from Page 1)

to try their hand as a lumberjack. In the professional competition, prizes totaling \$1,000 were awarded in the 12 events.

## Soybean tour

to be Sept. 20

**YORK** - The York County soybean tour starts on September 20 at 6:30 p.m. at the Mobay Demonstration Farm located north of Stewartstown. To get there, one can take Rt. 851 north out of Stewartstown. One will leave Rt. 851 at the 1st

crossroads by going straight ahead, and going past golf course and at the next intersection go straight ahead. When one comes to the third intersection, which is a deadend, turn right and the farm is located 1/2 mile on left.



Chain saw competition saw a big turnout in the amateur division. Each man had to make two cuts

across the log, one up and down, and the best time won the event.

## Ayrshire herd completes record

**POTTSTOWN** — The National Ayrshire Breeders' Association, Brandon, Vermont recently announced the completed official Dairy Herd Improvement Registry milk production records for the Ayrshire herd owned by Harold R. Kulp, Pottstown, Pennsylvania.

At the demonstration farm you will see different weed control plots. The second stop will be at the variety demonstration of Charles Trout's, located on the adjoining farm. Following that there will be a general discussion led by Dr. Elwood Hatley, soybean specialist at Penn State. Anyone is invited to attend.

This is the 16th year that Eureka pure bred Ayrshires have been officially tested and the 29 lactation records averaged 13032 lbs. milk and 525 lbs. of butterfat with a 4.0

per cent test on a M. E. (Mature Equivalent) basis.

Eureka Mario Kathy was the highest milk producing Ayrshire in the herd. Her actual 305-day record on a twice-a-day milking schedule is 18670 lbs. milk.

The herds leading butterfat producer is also 'Kathy' with 769 pounds fat.

Many registered Ayrshire herds are gaining national recognition because of their ability to produce large quantities of milk and meet

the challenges of today's marketing needs at an economical level of production.



**+2061  
P.D. Milk**

**99%  
Repeatability**

**\$25  
Per Unit**

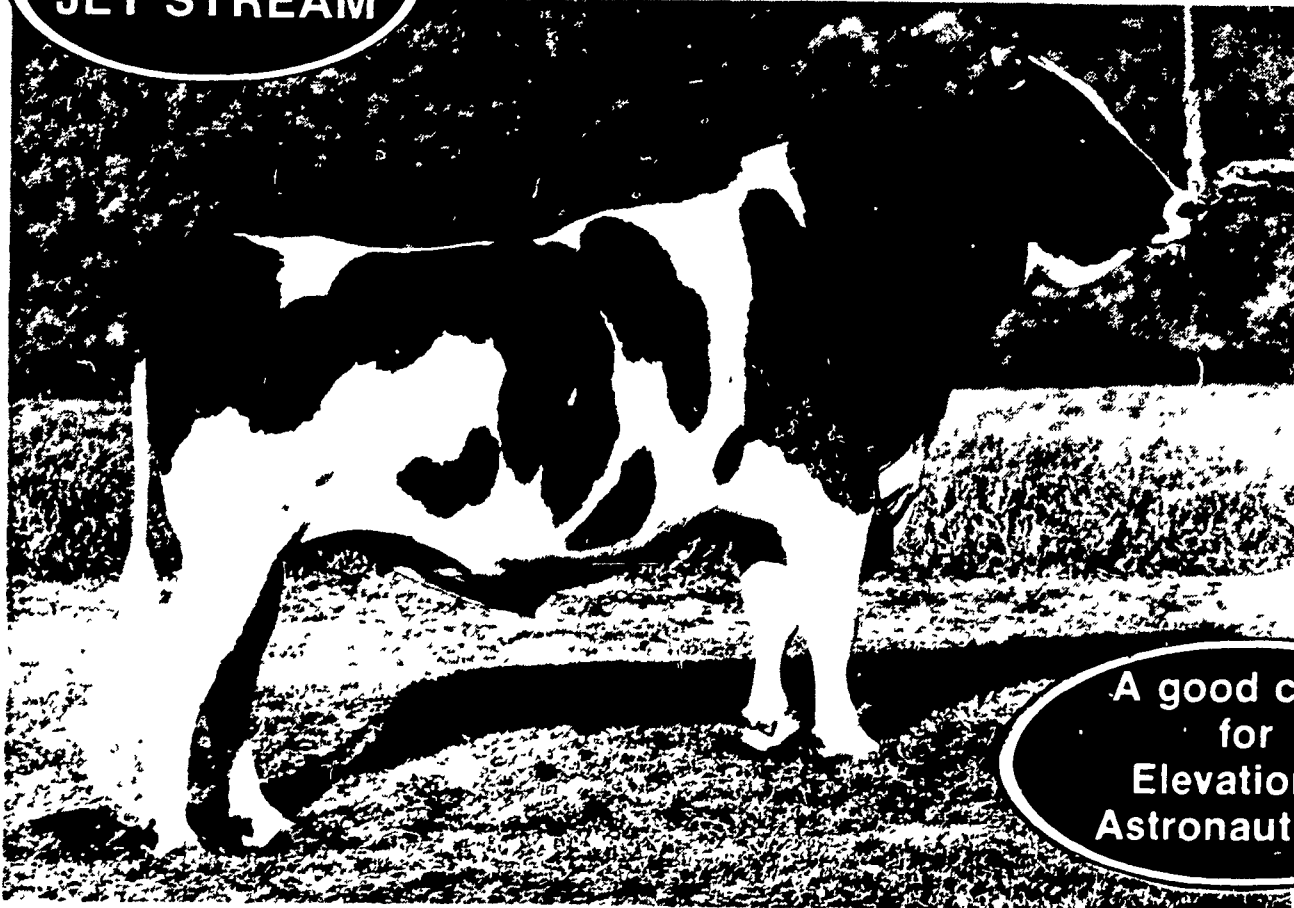
from

**Plus On  
Type**

**Sire  
Power  
INC.**

Member Cooperatives  
Northeastern Breeders Association  
Md. Artificial Breeding Coop Inc  
W Va. Artificial Breeders Coop Inc

**9H107  
JET STREAM**



**A good cross  
for  
Elevation &  
Astronaut dtrs.**

**9H107 ARLINDA JET STREAM-TWIN**  
(VG-87-PQ 7/79)  
USDA 7/79 RIP 62% Rpt 99%  
2,586 Dtrs., 1022 Herds 17,801m 3 5% 618f  
P D ('74) +2061m — 22%+58f +\$155  
HFA Type Data (7/79)  
441 Dtrs 97% Rpt, PDT +0 24