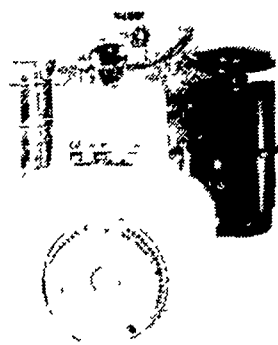




**SPECIAL TRUCKLOAD SALE
530 LOMBARDINI DIESELS**

- S.A.E. 7½ h.p. is equal to 10 h.p. Gas
- Weight - 85 lbs.
- Fuel Consumption about ½ of Gas
- 1 Year Warranty
- 3600 RPM



- Fuel tank mounted on flywheel, straight shaft drive.
- Suitable on cornbinders, grass mowers, generators, air compressors, garden tractors and portable equipment.

LIST \$895 **SALE \$650⁰⁰**

★ Quantity Discount on Two or More Units

Let Us Know Your Service Problems.

HOOVER DIESEL SERVICE

PH: 717-656-6133

2998 West Newport Rd. Ronks, Pa. 17572
DEALER INQUIRIES INVITED

York-Adams Grange installs officers

The New 1979-81 York-Adams Pomona Grange officers were installed when Pomona Grange met on August 25, at Gideon Grange Hall, Hanover. Installation Officer was J. Luther Snyder, Past State Grange Master, and his Installation Team of family members, Mrs. Snyder, James, Joyce and Anna May Snyder. New officers are as following: Master, Richard Gallimore; Overseer, David Scott; Lecturer, Gladys Sheffer; Chaplain, Janet Nace; Steward, James Persel; Assistant Steward, Norman Nace; Lady Assistant Steward, Anna May Snyder; Gatekeeper, Donald Jamison; Secretary, Patty Scott; Treasurer, J. Frank Sheffer; Ceres, Louann

Snyder; Pomona, Peggy Jamison; Flora, Maryann Boyce; and Exec. Committee Member, William Justh.

The Women's Activity Chairman held judging in the afternoon, in the following categories, and winners in first place: bar cookies, Gladys Sheffer, Red Lion Grange; stuffed toys, Treva Leese, Gideon Grange; place mats, Evaline Hurley, Eureka Grange; poncho, Jane Laughman, Gideon Grange; three piece sweater sets, Ruth McCurdy, Eureka Grange; afghans, Vickie Kearn, Valley Grange; wall hanging, Irene LeMay, Red Lion Grange; centerpiece, Ruth McCurdy; knitted dress, Jane Laughman; braided rug, Dorothy Reichart, Gideon Grange; pillow cases and sheet, Dorothy Reichart, and youth macrame, Jane Laughman.

The November 10 session of York-Adams Pomona Grange will be held at the

Grace Hope Brethren Church, Dillsburg, R.D. with Eureka Grange as host. Lecturer, Gladys Sheffer, will have as the evening program Joy Ufema, speaking on "The Dying Patient As A Person".

On November 7, the Women's Activity Day will be held at that same church, beginning at 10:00 a.m. The program will be on "Lap Quilting", and a Show and Tell. The meeting is open to the public.

Other dates for all Grange Members are: Sept. 21, Seventh Degree Banquet at the Bananza Restaurant, Hanover, beginning at 6:30 p.m. A tour of a Frozen Food Plant will follow the meal.

Fifth Degree will be held at Gideon Grange Hall on September 22 at 8:00 p.m.; Saturday, September 29, a special Sixth Degree day for region G, will be held at East Juniata School, North of Mifflintown, Juniata County; on October 6, the Region G State Grange Talent Contest at Mexico, Juniata County, beginning at 7:30 p.m., the District 3 Talent Contest will be held in Lynntown Elementary School, Lewisburg, on October 13 and on October 7, the York-Adams Pomona Grange Planning meeting for 1979-81 Grange year will be held at Gideon Grange Hall, beginning at 2 p.m.



LMA asst.

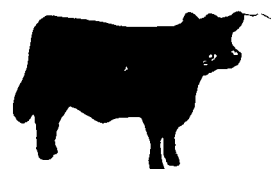
manager named

KANSAS CITY, Mo. - A veteran livestock marketing businessman with legislative

experience has joined Livestock Marketing Association as an assistant manager. Dennis D. Casey is the former manager of Casey Livestock Co., Wolf Point, Mont., and served in that state's legislature from 1975-76.

LMA General Manager C. T. "Tad" Sanders said Casey's background in the Montana Legislature "will be invaluable to us in furthering our efforts to gain modernization and uniformity in marketing laws from state to state. We will also draw upon his more than 20 years of marketing experience to continue the development and expansion of our various commercial services to our subscribers."

LMA furnishes business and commercial services to over 1,400 subscribers in the U.S. and Canada.



STAR

"ENERGY-PAK"

IS OXYGEN

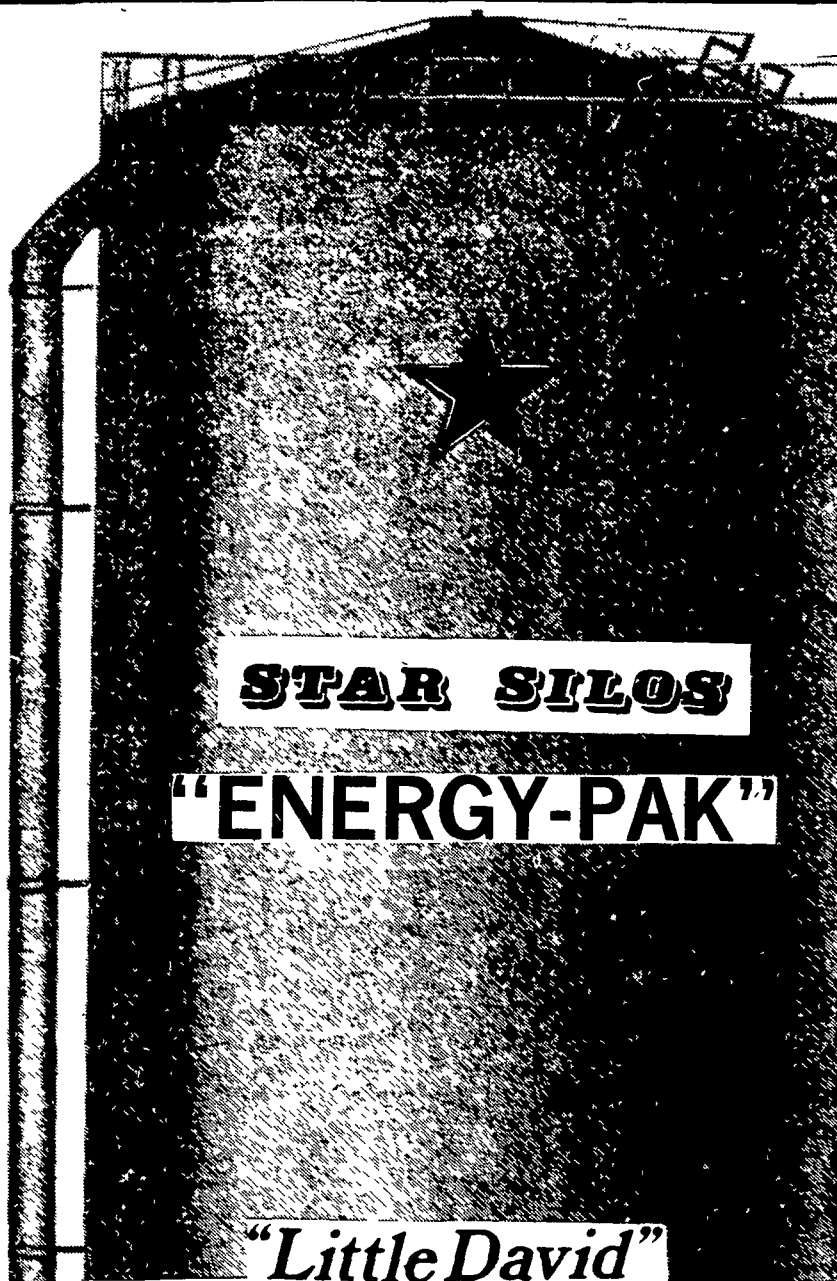
CONTROLLED



*WHAT IS AN "ENERGY-PAK" OXYGEN CONTROLLED FEED STORAGE SYSTEM?

The "Energy-Pak" "Oxygen Controlled" Storage System includes a solid, steel reinforced concrete wall with a tough epoxy coating on the inside wall and a cone shaped concrete roof. All access openings to the Silage Storage area are round and fitted with air-tight gaskets. These round openings are easily clamped tight. These features help to control and limit the amount of oxygen that comes in contact with the feed.

In operating an "Energy-Pak", prime importance is placed on closing the silo after each filling and feeding operation. Proper use of this system significantly reduces the oxygen content in the silo and results in a more ideal condition for maintaining the quality of the feed put into it.

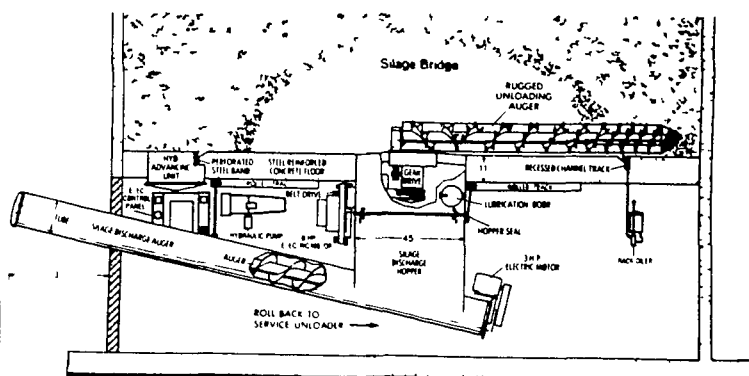


STAR SILOS

"ENERGY-PAK"

"Little David"

BOTTOM UNLOADING SYSTEM MODEL 350



Engineered for Convenience And Dependability

Detach and mail to:
WEAVER STAR SILO, CO.
RD 4
Myerstown, PA 17067

STAR SILOS
of PA.

ALLEGHENY STAR — Jackson Center, Pa 16133
412-662-2883

NORTHERN STAR — Watsonstown, Pa 17777
717-649-5151

WEAVER STAR — Myerstown, Pa 17067
717-866-5708

I AM INTERESTED IN

STORAGE FOR

- ___ Corn silage
- ___ Haylage
- ___ High moisture corn
- ___ Manure
- ___ Gunite repairs (High strength concrete sprayed on surfaces)

FEED EASY

- ___ Silo unloaders
- ___ Conveyors
- ___ Feed-mixer wagon
- ___ Feed transit wagon
- ___ Feeders

Please have salesman call

Name _____

Address _____

City _____ State _____ Zip _____

County _____ Phone _____

COMPLETE FARM PAINTING



We Use Quality PAINT
AERIAL LADDER EQUIPMENT

- Modern and Efficient Method
- Reasonable Prices
- Spray-On and Brush-In Method
- Sandblasting-if Necessary

FOR FREE ESTIMATES WRITE:

ESH SPRAY PAINTING

(Daniel S. Esh, C. Ralph Miller)

SPRAY-ON AND BRUSH-IN PAINTER

Box 350A

Ronks, PA 17572

or call this number

717-687-9155

or 717-687-8262

INDUSTRIAL COMMERCIAL RESIDENTIAL