

Livestock market and auction news

Special Market

Tri-State, Va.
Sept. 10, 1979

There were 1,068 head sold. All cattle were graded by Representatives of the VDACS's Division of Markets. Livestock Section on VDACS standards and sold by the hundredweight.

STEERS: Good 400-500 lbs. 79.00; 500-600 lbs. 76.00-77.00; 600-700 lbs. 73.00-77.00; 700-800 lbs. 67.00-73.00; 800-900 lbs. 65.50-68.50; 900-1000 lbs. 60.50-62.00; 1000-1100 lbs. 58.00-62.50; 1100-1200 lbs. 57.00-62.75; over 1200 lbs. 55.25-56.75. Medium 400-500 lbs. 82.00-83.25; 500-600 lbs. 77.00-78.50; 600-700 lbs. 70.00-74.00; 700-800 lbs. 64.75-72.00; 800-900 lbs. 62.00-65.25; 900-1000 lbs. 59.25; 1000-1200 lbs. 56.00-58.00; 1200-1400 lbs. 53.50-55.25. Common 400-500 lbs. 79.00-83.50; 500-600 lbs. 71.00-74.00; 600-700 lbs. 70.00; 700-800 lbs. 65.25-71.50; 800-900 lbs. 62.74-64.00; 900-1000 lbs. 58.00-60.00; over 1000 lbs. 57.25-57.75.

Thomasville Market

Thomasville, Pa.
Wednesday, September 12
Cattle 75; Steers, choice 69.00-71.00; good 65.00-68.00, standard 61.85-64.00; choice slaughter heifers 68.00-69.25; medium and good 60.00-64.00; standard 51.75-58.00. Cows, good 48.50-51.60; utility 45.00-47.00; canner and cutters 39.00-43.00; Bulls, medium and good 60.00-63.25; good 68.00-69.25; stock steers, choice, 400 lbs. 80.00-85.00; Calves 43. Vealers, Choice 160 to 220 lbs. 109.00-116.00; thin and rough 75-85 lbs. 75.00-89.00; Holstein bulls 90-115 lbs. 103.00-114.00; Holstein heifers 153.00-194.00; Hogs 168, barrows and gilts by private treaty 39.50; sows 400 lbs. and higher 28.00-31.00; heavy boars 33.00-36.00; Sheep 19, Choice lambs 65-70 lbs. 56.00-60.00. Medium and Good, 50-60 lbs. 45.00-65.00.

New Holland Horse

Monday, September 10
New Holland
Sales Stables

Reported receipts of 375 head of horses, mules, and ponies. Market steady with last week's market.

Tennessee driving horses, 800-1260; Ohio driving horses, 575-850; local driving horses, 300-700; local riding horses 300-500; better horses 550-910; lightweight killers 275-425; heavyweight killers 475-625; mare ponies 25-65; colts 10-30; geldings 25-60; larger ponies 90-250.

Special Market

Special Yearling Steer and Heifer Sale
September 7, 1979
Wytheville, Va.

There were 603 head sold. All cattle were graded by Representatives of the VDACS's Division of Markets, Livestock Sector

on VDACS standards and sold by the hundredweight.

STEERS: Choice 700-800 lbs. 75.00-79.00; 800-900 lbs. 69.50-75.25; 900-1000 lbs. 62.00-65.75; over 1000 lbs. 60.00-67.25. Good 500-600 lbs. 86.50-88.50; 600-700 lbs. 83.25-86.50; 700-800 lbs. 75.00-82.25; 800-900 lbs. 70.00-79.00; 900-1000 lbs. 63.00-69.25. Medium 400-500 lbs. 89.50; 500-600 lbs. 81.00-89.00; 600-700 lbs. 82.50-83.50; 700-800 lbs. 72.25-80.00; 800-900 lbs. 69.50-72.50; 900-1000 lbs. 65.50; over 1000 lbs. 63.50-64.00.

HEIFERS: Choice 500-600 lbs. 75.50-77.25; 600-700 lbs. 70.00-75.50; 700-800 lbs. 63.50-72.50; 800-900 lbs. 61.00-64.50; 900-1000 lbs. 58.00. Good 400-500 lbs. 70.00-75.00; 500-600 lbs. 70.00-76.00; 600-700 lbs. 72.00-75.00; 700-800 lbs. 66.50-72.25; 800-900 lbs. 55.00-59.00. Medium 400-500 lbs. 70.00-72.00; 500-600 lbs. 72.75-74.25; 600-700 lbs. 69.75-70.00; 700-800 lbs. 70.00; 800-900 lbs. 60.00-61.00.

New Holland Dairy

New Holland
Sales Stables

Wednesday, September 12
Reported receipts of 111 cows, 39 heifers, and 5 bulls. Market steady with last week's market.

Load of Pa. fresh 1050-1150; load of Pa. fresh 1400-1525; load of Pa. fresh 890-1250; load of Pa. fresh 1075-1550; load of Butler Co. fresh 1125-1675; load of N.Y. and Connecticut, purebreds and grades, fresh 1000-2225, springers 1175-1975; local cows 825-1600; springing heifers, grades 850-1400; open heifers 295-560; bulls 550-910.

Lancaster Feeder Cattle

Lancaster, Pa.
Fri., September 7, 1979

Feeder Cattle
Today 502
Last Friday 285
Last Year 268

TREND: Not fully comparable; insufficient supply in recent weeks for a market test. Demand good for all classes.

FEDER STEERS: Medium Frame No. 1 Muscle Thickness: Couple lots 515-535 lbs. 90.50-93.00, 665-775 lbs. 81.00-81.75, 850-910 lbs. 69.50-73.85.

Medium and Large Frame No. 1: One lot 775 lbs. 82.75, one lot 1000 lbs. 69.00, load 1160 lbs. with Choice slaughter finish 63.50.

Small and Medium Frame No. 1: One lot 510 lbs. 81.60. Medium Frame No. 1 and 2: 570-620 lbs. 80.50-85.25, 965-1005 lbs. 69.35-70.60.

Large Frame No. 1 and 2: Lot thin 735 78.50.

Medium Frame No. 2: One lot 710 lbs. 75.25.

Large Frame No. 2: One lot 685 lbs. 75.00.

Small Frame No. 2: Couple lots 325-480 lbs. 71.00-75.50.

Belleville Auction

Belleville, Pa.
September 12, 1979

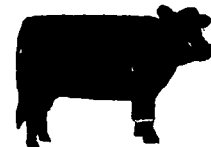
CATTLE 109. Few Choice slaughter steers 68.50-68.85, Standard (holsteins) 61.25-61.50. Utility & Commercial slaughter cows 50.50-53.10, Cutters 48.75-51.00, Canner & Low Cutter 39.00-47.50. Yield Grade #1 slaughter bulls 58.00-66.00.

CALVES 145. Choice vealers 97.50-112.50, Standard & Good 110-130 lbs. 92.50-101.00, 90-110 lbs. 86.50-92.00, 65-90 lbs. 65.00-85.00. Farm calves, holstein bulls 90-115 lbs. 100.00-120.00; holstein heifers 115.00-190.00.

HOGS 186. US No. 1-2 barrows & gilts 42.25-42.85, No. 1-3 38.75-42.00. US No. 1-3 sows 28.00-34.25.

FEDER PIGS 430. US No. 1-3 20-35 lbs. feeder pigs 12.00-21.00 per head, No. 1-3 35-50 lbs. 20.50-33.50 per head.

SHEEP 49. Good & Choice lambs 45.00-69.00. Slaughter ewes 22.00-33.50.



DEAD STOCK

REMOVED PROMPTLY
ANYTIME — ANYWHERE

We Charge For Distant Pickups.

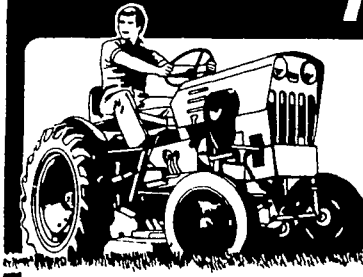
A. F. BRANDT'S SONS

RENDERERS

ELIZABETHTOWN, PA

(717) 367-6026

POWER KING TRACTOR



Mows up to 3 acres per hour

Breeze thru your Work! Power King's all gear drive delivers nearly 100% of horsepower to the wheels. Available with 12, 14 and 18 hp engine and up to 19" cultivating clearance. Handles 4' and 5' mowers, 12" plow, 32" tiller, 42" and 48" snowblowers, 4' dozer, 1/2 ton loader, 6' backhoe, log splitter, other attachments. American built since 1946. Get our down-to-earth price.

OBERHOLTZER'S

RD #4, Box 260, Fairview Road
Litz, PA 17543 Phone: 717-733-8506

HOURS:

Mon., Thurs., Fri. 9:00 to 2:00 and 4:00 to 9:00
Tues., Sat. 9:00 to 12:00

Field trials proved it...



the Improved Agway Veal Feeding Program is another Winner

The feeding trials involved more than 400 calves at three separate facilities managed by experienced, commercial veal growers. All of the calves received Agway Veal Pre-Starter. From there, half of the calves were fed improved Agway Veal Starter and Finisher. The other half were fed original formula Veal Starter and Finisher.

The results? Agway animal nutritionists and researchers have made a good thing better! From start to finish at about 325 pounds, the improved formulas won hands down.

Calves fed improved Starter and Finisher showed an average daily gain of 2.28 pounds per animal per day with a feed conversion rate of 1.64 pounds of feed per pound of gain.

Agway Veal Pre-Starter, Starter and Finisher are made from quality ingredients. From top quality protein, 100% derived from milk products. From 100% animal fat. Because Agway knows that protein quality and fat source are the keys to top performance.

Every grower knows that prime veal depends on the quality and vigor of the calves, proper housing, feeding, management and sanitation. Do all of them right and the improved Agway Veal Feeding Program can do a superior job for you.

For more information on the Agway Veal Feeding Program, call your local Agway.

FARM ENTERPRISE SERVICE

