

# Livestock market and auction news

## Pa. Auction Summary

**Of 15 Livestock Auction Market Reports September 14, 1979**

**CATTLE 7458.** Compared to 5273 last week and 6311 a year ago. Compared with last week's market, slaughter steers steady to 1.50 higher. Sl. heifers 1.00-2.00 higher. Sl. cows 1.00-1.50 higher. Sl. bulls strong-2.00 higher. High Choice & Prime YG 3-4 sl. steers 68.75-72.60; Choice YG 2-4 65.00-71.50; Good 60.00-66.00; Standard 57.00-61.50. Choice sl. heifers 62.00-65.50; Good 57.00-61.50; Standard 52.00-57.00. Utility & Commercial sl. cows 48.00-54.00, Cutters 46.00-51.00, Canner & L. Cutter 40.00-48.50, Shells down to 32.00. Few Choice sl. bullocks 64.00-71.75, few Good 62.00-68.00. Yield Grade #1, 1000-2200 lbs. 60.00-68.00, Yield Grade #2, 900-1650 lbs. 59.00-62.00.

**FEEDER CATTLE:** Choice 300-750 lbs. steers 65.00-99.00. Good & Choice 300-700 lbs. heifers 63.00-85.00.

**CALVES 4062.** Compared to 2595 last week and 3897 a year ago. Vealers steady to 5.00. Prime vealers 110.00-124.00, Choice 100.00-120.00, Good 90.00-105.00, Standard & Good 90-120 lbs. 75.00-90.00; 70-90 lbs. 65.00-85.00, Utility 50-100 lbs. 55.00-75.00.

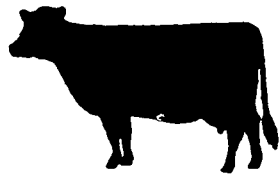
**FARM CALVES:** Hol. Bulls 90-120 lbs. 85.00-122.00. Hol. Heifers 90-150 lbs. 100.00-200.00 few at 245.00.

**HOGS 8434.** Compared to 5851 last week and 5958 a year ago. Barrows and gilts unevenly steady. US No. 1-2 200-240 lbs. barrows & gilts 41.00-42.50 few 44.00, No. 1-3 200-250 lbs. 40.00-42.00, No. 2-3 190-260 lbs. 37.00-40.00, No. 1-3 140-190 lbs. 34.00-39.50. SOWS steady to .50 lower. US No. 1-3 300-600 lbs. sows 29.50-35.00, No. 2-3 300-650 lbs. 26.50-30.00. BOARS 23.00-30.00.

**FEEDER PIGS 1870.** Compared to 1410 last week and 1070 a year ago 5.00-7.00 lower. US No. 1-3 20-35 lbs. feeder pigs 10.00-21.00 per head, No. 1-3 35-50 lbs. 17.00-28.00, No. 1-3 50-80 lbs. 28.00-37.00.

**GRADED FEEDER PIGS 4434.** ALL SALES CWT. Compared with 3031 head last week, and 2604 head a year ago. Feeder pigs steady to 6.00 lower, few to 10.00 lower. US No. 1-2 30-40 lbs. 57.00-71.00, 40-50 lbs. 57.00-71.00, 50-60 lbs. 50.00-59.50; 60-80 lbs. 48.00-54.00; US No. 2-3 20-30 lbs. 63.00-81.00, 30-40 lbs. 51.00-68.00, 40-60 lbs. 52.00-59.00.

**SHEEP 1017.** Compared with 276 last week and 718 head a year ago. Spring sl. lambs steady to 2.00 higher. Choice 60-105 lbs. 60.00-70.00, Good 45-100 lbs. 50.00-62.00. Slaughter ewes 15.00-36.00 few down to 6.00.



## Belnap Auction

**Dayton, Pa. September 12, 1979**

**CATTLE 96.** Compared with last Wednesday's market, Choice slaughter steers 63.75-68.00, few Good 56.50-62.00. Couple Choice slaughter heifers 57.75 and 58.75. Utility & Commercial slaughter cows 45.50-49.50, Cutters 44.00-46.25, Canner & Low Cutter 37.00-44.75, Shells down to 32.00. Few Good & Choice 330-400 lbs. feeder steers 85.00-99.00, 670-765 lbs. 68.50-72.50; few Good & Choice 275-550 lbs. feeder heifers 68.00-81.00.

**CALVES 147.** Choice vealers 107.00-120.00, Good 100.00-106.00, Standard & Good 90-120 lbs. 83.00-96.00, 60-85 lbs. 70.00-84.00, Utility 50-175 lbs. 51.00-69.00. Farm calves, holstein bulls 90-135 lbs. 90.00-120.00; couple holstein heifers 90 and 105 lbs. 136.00 and 155.00; beef cross bulls & heifers 80-120 lbs. 81.00-110.00.

**HOGS 275.** US No. 1-2 210-230 lbs. barrows & gilts 42.50-44.00, No. 1-3 185-260 lbs. 40.50-43.00, No. 2-3 250-315 lbs. 40.00-42.00. US No. 1-3 300-620 lbs. sows 32.00-36.50. Boars 27.75-35.00.

**FEEDER PIGS 201.** US No. 1-3 20-35 lbs. feeder pigs 16.00-24.00 per head, No. 1-3 45-60 lbs. 23.00-28.00, Utility 10-40 lbs. 10.00-17.00 per head.

**SHEEP 28.** Choice 85-100 lbs. spring slaughter lambs 65.00-65.25, Good 85-100 lbs. 58.00-60.00.

## Leesport Auction

**Leesport, Pa. September 12, 1979**

**CATTLE 257.** Compared with last Wednesday's market, slaughter steers \$1 to \$1.50 higher. Good & Choice slaughter steers 65.00-69.00. Good & Choice slaughter heifers 63.00-66.50. Utility & Commercial slaughter cows 50.00-54.00, Cutters 46.00-48.00, Canner & Low Cutter 45.00-47.00, Shells down to 40.00-42.00. Yield Grade #1 block bulls 65.00-72.00.

**CALVES 143.** Vealers \$3 to \$5 higher. Choice vealers 112.00-115.00, Good & Choice 90.00-102.00. Farm calves, holstein bulls 80-100 lbs. 85.00-105.00; holstein heifers 110.00-205.00.

**HOGS 339.** US No. 1-2 barrows & gilts 41.50-42.50, No. 1-3 39.50-41.00. US No. 1-3 sows 32.00-35.00. Boars 25.00-31.00.

**FEEDER PIGS 221.** US NO. 1-3 20-35 lbs. feeder pigs 60.00-72.00 cwt., No. 1-3 35-50 lbs. 65.00-75.00 cwt.

**SHEEP 29.** Choice spring slaughter lambs 67.00-70.00.

**Indiana Auction**  
**Homer City, Pa. Thursday, September 13, 1979**

**CATTLE 97.** Compared with last week's market, slaughter heifers Good 53.50-55.00, Utility 46.00-49.00. Utility & Commercial sl.

cows 49.50-53.00 one 54.75, Cutters 47.00-50.00, Canner & L. Cutter 42.00-48.00. Bulls Yield Grade #1-2, 1000-1960 lbs. 57.00-64.00.

**FEEDER CATTLE:** Good & Choice 300-500 lbs. steers 75.00-96.00. Good & Choice 350-700 lbs. heifers 63.00-90.00, Good & Choice 550-800 lbs. bulls 65.00-85.00.

**CALVES 152.** Vealers steady. Choice 95.00-116.00, Good 85.00-105.00, Standard and Good 90-120 lbs. 80.00-90.00; 70-90 lbs. 70.00-85.00.

**FARM CALVES:** Hol. Bulls 90-120 lbs. 90.00-110.00. Hol. Heifers 85-120 lbs. 100.00-190.00.

bobs, 90 to 110 lbs. 85.00-136.00; bobs, 80 lbs. and down 70.00-83.00; grassers and feeders 50.00-95.00; lambs, 50.00 to 56.00, no top lambs; sheep 20.00-28.50; hogs, 200 to 250 lbs., 42.00-45.50, sows 28.00-33.00; boars 20.00-24.50; pigs, each 15.00-24.00; heifers 50.00-54.50; steers, good, no top steers; steers, common 55.00-67.00; bulls 52.00-62.25; cows, good 51.00-54.50; cows, medium 46.50-48.00; cows, poor or small 35.00-42.00; horses, 435.00-455.00; ponies 42.50-72.50; goats 12.50-37.00.

## Special Market

**Special Slaughter Cattle Sale September 8, 1979 Madison, Va.**

There were 154 head sold. All cattle were graded by the Representatives of the VDACS's Division of Markets, Livestock Sector on USDA standards and sold by the hundredweight.

Choice Steers 1045-1292 lbs 65.00-67.10; 3 Choice Holstein Steers 1726 lbs. 58.00; Choice Single Steers 62.00-66.00; Good Steers 65.75-66.00, with a few back to feedlot at 67.75; Good Single Steers 57.50-63.00; Choice Heifers 850-1115 lbs. 60.25-63.10; Choice Single Heifers 58.00-63.00; Good Heifers Singles 58.25-59.75.

## Valley Livestock

**Valley Stockyards Athens, Pa. Monday, September 10**

Reported receipts of 488 calves, 158 cows, 20 heifers, 18 bulls, 7 steers, 65 hogs, 4 sheep, and 1 lamb. Cattle market reported higher and calf market steady.

Holstein heifer calves to 175.00; veals 85.00-118.00;



Figure it for yourself.  
**When you shortchange their nutrition, you shortchange yourself.**

Looking for ways to cut on down on out-of-pocket feed costs without cutting down on milk production? Cutting production costs will backfire if you end up shortchanging your herd's nutrition in the process.

But you can cut those costs safely by feeding homegrown grains and grain silage fortified with the right Vigortone Dairy Pre-Mix. These potent pre-mixes contain the proper levels of vitamins, calcium, phosphorus, and other minerals needed to balance your farm's feedstuffs.

Vigortone Dairy Pre-Mixes can be mixed in or metered on any palatable grain or roughage. This lets you change ration content to fit the supplies you have on hand without risking herd performance.

Better herd nutrition means a bigger milk check. Minimum out-of-pocket feed costs mean more in your pocket.

Your figures will prove it.

**Dry cow nutrition pays future profits.**

Shortchanging your dry cow's nutrition can be risky too. Most problems dairymen experience in getting cows back in the string can be traced to careless treatment during the dry period.

Keep them in top condition until their next lactation. To help you do it, Vigortone has developed unique dairy pre-mixes specially concentrated for dry cow rations.

**Now is the time to compare.**

See your Vigortone dealer soon. He's ready to compare the performance of Vigortone's cost-saving dairy feeding programs with any other you name

# VIGORTONE

## PRE-MIXES It's Time To Compare!

50 branch offices — 8000 dealers — 3 manufacturing plants

FOR FURTHER INFORMATION CONTACT YOUR LOCAL REPRESENTATIVES LISTED BELOW

LEON B. HERSHEY  
Box 265 Paradise, PA  
717-442-4807

B. RUSSELL SAUDER  
R5, Box 322A Manheim, PA  
717-665-4153

JASON E. MILLER  
169 Strasburg Pike  
Lancaster, PA  
717-393-7244

AMOS HURSH  
Lititz RD#4, PA 17543  
717-733-6776

WM. J. YODER  
Rt 2, Box 367  
Narvon, PA 17555  
717-354-0497

PAUL BITTNER  
Germansville, PA  
215-767-7140

H. MELVIN CHARLES  
R1 Washington Boro, PA  
717-684-5783

JAMES STUTZMAN SONS  
R3 Kutztown, PA  
215-683-7198  
215 682-2624

RALPH E. BRUNGART  
Loganton, PA  
717-725-2355

WERTZ BROTHERS  
R5 Danville, PA  
717-275-4407

CHESTER SOLTYS, JR.  
Spring City, PA  
215-948-3647

J. CLYDE BRUBAKER  
2418 Harrisburg Pike  
Lancaster, PA  
717-898-8984

SHERWOOD A. WITMER  
Box 138 Berrysburg, PA  
717-362-8823

THOMAS R. WORTHINGTON  
R3 Muncy, PA  
717-546-2313

WILMER J. WEAVER  
R1 Fredericksburg, PA  
717-865-6710

WALTER L. HAY  
RD 3 Gettysburg, PA  
717-334-1592

ELAM G. HOOVER  
R2, Box 531 Reading, PA  
215-926-2908

ELWIN H. REAM  
Hughesville, PA  
717-584-4085

RON HERSHEY  
RD#2 Gap, PA 17527  
717-442-8573