

McMahon wins at 4-H steer competition

NORRISTOWN - Steve McMahon of Green Lane took grand champion honors with his steer at the Montgomery County 4-H steer show held recently as part of the Montgomery County 4-H Fair. The reserve champion award went to David Huff of Flourtown.

Other results from the show were:

Lightweights
 1. Roy Teaford, Trappe; 2. Angela Bernotas, Graterford; 3. Margaret Schultz, Collegeville; 4. Perry Schultz, Collegeville; 5. Kit Jones, Schwenksville.

Mediumweights
 1. Dave Huff, Flourtown; 2. Jon Bryant, Worcester; 3. Doug Rumberger, Collegeville; 4. Rusty

Bryant, Worcester; 5. Rick Wojton, Trappe; 6. Dave Rumberger, Collegeville.

Heavyweights
 1. Steve McMahon, Green Lane; 2. Jim Roth, Collegeville; 3. Melanie Bryant, Worcester; 4. John Rohr, Hatfield; 5. Richard Roth, Collegeville.

Heifer Class
 1. Melanie Bryant.

Fitting and Showmanship First Year

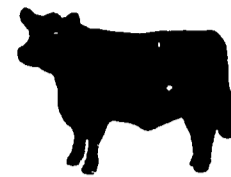
1. Steve McMahon, 2. Angela Bernotas, 3. Jon Bryant, 4. Rick Wojton, 5. Richard Roth.

Junior

1. David Huff, 2. Doug Rumberger, 3. Margaret Schultz, 4. Dave Rumberger, 5. Rusty Bryant, 6. Perry Schultz.

Senior
 1. Roy Teaford, 2. Jim Roth, 3. Jon Rohr, 4. Kit Jones, 5. Melanie Bryant.

Grand champion showman
 - David Huff; **reserve champion showman**: Roy Teaford.



SAVE \$\$\$

Ask Us For Repowering

REPOWER WITH VM DIESEL

SAVE \$\$\$

Ask Us For Repowering

Harvesters, Haybines, Tractors, Compickers, Balers, Hydraulic Systems, Corn Binders, Choppers



Diesel

1050 SU SERIES



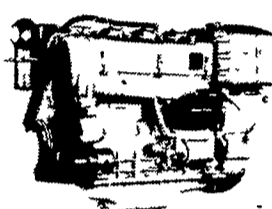
2800 R.P.M.
22 SAE HP
20 DIN HP



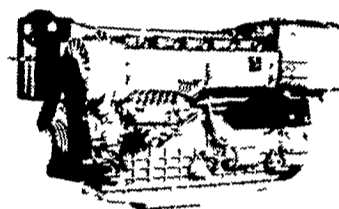
2800 R.P.M.
44 SAE HP
40 DIN HP



2800 R.P.M.
66 SAE HP
60 DIN HP



2800 R.P.M.
88 SAE HP
80 DIN HP



2800 R.P.M.
132 SAE HP
120 DIN HP

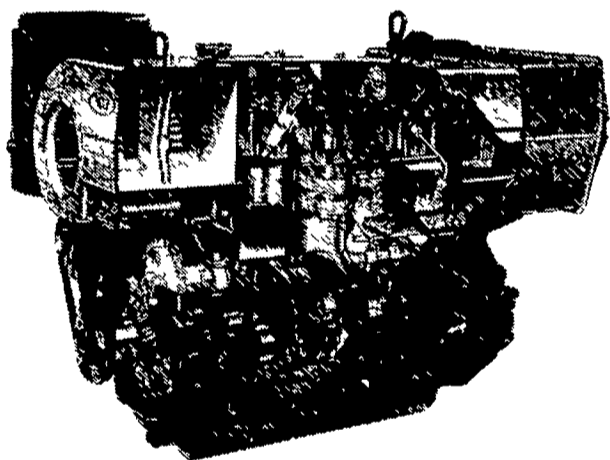
THE NEW AND REVOLUTIONARY FAMILY OF ENGINES

All New HR Series

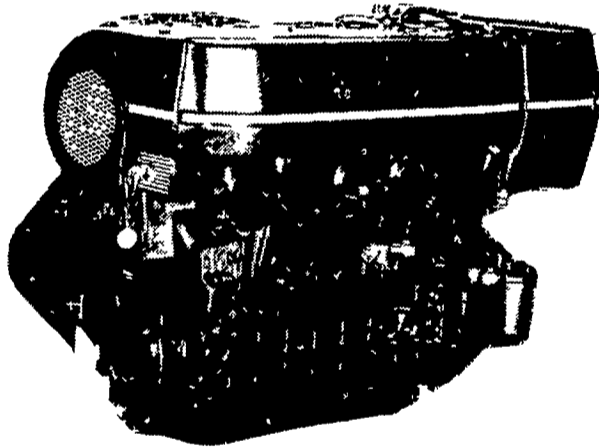


Oil Cooled Jacket

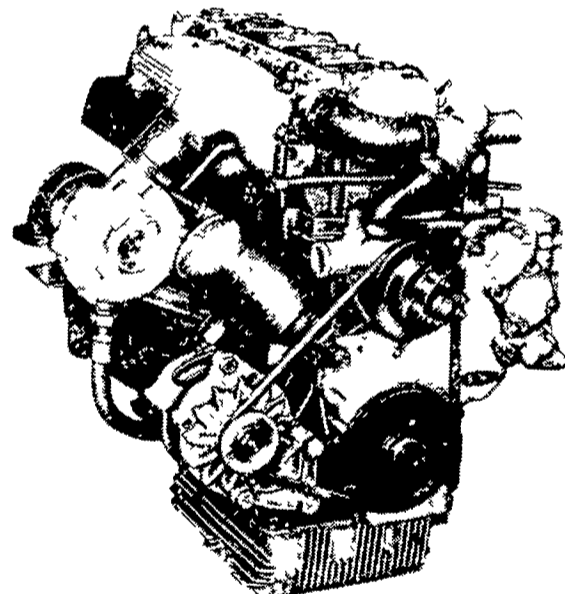
OIL COOLED



AIR COOLED



WATER COOLED



General Features:

- Integrally cast cylinders with inserted and removable wet type cylinder liners
- Light hypereutectic alloy pistons
- Extra-resistant steel connecting rods alloyed with special alloy head bearings
- Surface hardened steel crankshaft
- Drop-forged, casehardened and tempered steel camshaft
- Anti-friction cast-iron tappets alloyed
- Cast-iron tunnel type crankcase
- Rotatory injection pump with mechanical governor

- Force-feed lubrication with built-in circuit and lobe type pump
 - Diaphragm pump feed
 - Oil and fuel filters with integral type element.
- Special structure and patented engine with consequent increases in performance and easier operation with low weight/output ratio low smoke emissions.
- Engine based on a design "modulus" formula which allows a maximum parts standardization and interchangeability.

Ask For Horsepower Ranges Of Above

THE "RIGHT FROM THE START" DIESEL ENGINE LINE FOR FAULTLESS PERFORMANCE

USED DIESELS

- (3) SR 2 Lister
- (3) DVA 1500 Sianzis
- F6L - 912 Deutz
- ST 2 Lister
- 1 Cylinder Deutz
- SR 3 Lister

QUEEN ROAD REFRIGERATION

Box 67, Intercourse, PA 17534
 Phone: John D. Weaver - 717-768-9006 or 768-7111
 or Answering Service - 717-354-4374

