

Pa. holds first tested ram lamb sale

By KENDACE BERRY
UNIVERSITY PARK —
Shepherds gathered last Saturday for Pennsylvania's first performance tested ram lamb sale, sponsored by the Pa. Dept. of Agriculture. The event was held at the Dept.'s Meat Evaluation Center, State College.

Top selling ram lamb at the sale was a Suffolk, bought by James D. Stauffer, Lancaster, for the price of \$650. Sold by Stephanie Kocker, Mansfield, the ram had a final weight of 193

pounds, with an average daily gain of .94 lbs. A January lamb, the Suffolk was sired by Troy MJA46Tw and was from a PSU ewe.

As part of the day's activities, an invitation ewe sale was also held.

Top selling ewe was a Dorset January lamb, sold by Penn State, and purchased by Lynn A. Laudenslager, Dalmatia. The animal brought a price of \$290. Second highest ewe sold was a Suffolk, which brought \$280 at the sale, sold by Troy A.

Ness, Dallastown, it too was sold to Laudenslager.

In the ram sale, several different breeds were represented. Sold by Greg Strassbaugh, Volant high selling Dorset ram brought \$320 and was purchased by Laudenslager. In the Hampshire, Cindy Corl paid \$345 for the top placing ram, one that was sold by Mr. and Mrs. Clyde Brubaker, Lancaster.

Larry Snyder paid top dollar in the Shropshire divi-



High selling ewe at the sale was this Dorset purchased by Lynn A. Laudenslager, Dalmatia. Seen on the left of the picture is Dick Kuzemchak.



Jim Stauffer, Millersville, on the left, purchased the highest selling ram at the ram lamb sale held at State College last Saturday. Standing with him is Ned Cocher, seller.

sion, \$225, for a ram lamb sold by Warn Menhennet, Cochranville.

In the Southdown division, Linda Sadler was high bidder, at \$150, for a lamb sold by the McCrum family, Mrs. Maynard Withall purchased the only Merino at the sale, and Anthony L. Rishel, the only Oxford.

Top Corriedale was bought by Hughe Baker for \$90, and sold by Joseph Stowell,

Holidaysburg. Larry W. Saylor was top bidder on the Columbias, at \$235 for a lamb sold by Marsh's Twin Pine Farms, Mercer, and Bruce Bassit bought the only Rambouillet seen at the sale.

A total of 22 ram lambs and 46 ewe lambs were sold last Saturday. Ram prices ran from \$80 to the high of \$650. Ewe sales ranged from \$70 to \$290.

EPA is broadening the use of two pesticides to allow homeowners to use them against fire ants. The two pesticides are Diazinon and Imidan and are currently authorized for use against other insects. If current Congressional amendments to FIFRA are passed, Mirex will be authorized for use against fire ants through 1980.

Dairy
for the Good Taste

SOYBEAN & CORN FIELD DAY

TUESDAY, SEPT. 11th - 10 A.M.

SEE: New Soybean & Corn varieties developed to grow in Eastern weather conditions.

SEE: Asgrow Soybeans varieties that are excelling in Eastern State Trials.

WHERE: ROBERT FAUST FARM

DIRECTIONS: 1 mile W. of Centerport toward Shartlesville (Shartlesville Rd.)

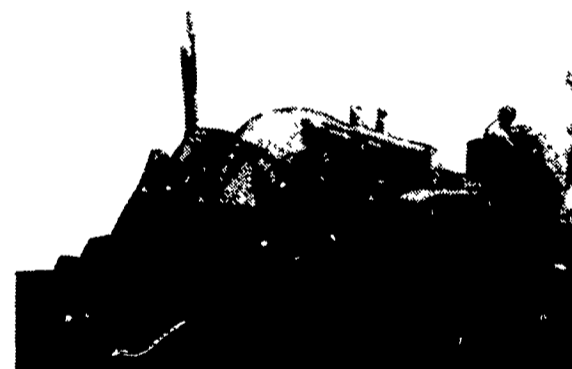
• LUNCH PROVIDED at plot

Sponsored by:

**ASGROW SEED CO. &
READING BONE
FERTILIZER CO.**

RAIN DATE - SEPT. 12 at 10 A.M.
**COME GROW
WITH ASGROW**

DRAINAGE PROBLEMS?



**COCALICO EQUIPMENT HAS THE TWO MACHINES TO
HANDLE YOUR DRAINAGE PROBLEMS.**

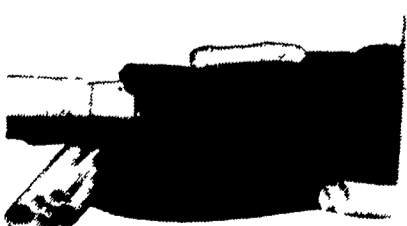
★ Both Machines Equipped with Laser Beam Grade Control

Drainage Pays High Returns

Investment	Typical Annual Return
Land Drainage.....	21-46%
Farm Buildings.....	3-23%
Farm Land.....	11%
Stocks.....	7.4%
Bonds.....	6.1%

COMPARE

Even with the conservative figures shown here, it's obvious that land drainage should top farmers' lists of investment priorities.



- ★ We Stock Heavy Grade Tubing which Exceeds SCS Specifications. In sizes 4", 6", 8", 10" and 12".
- ★ Also Pipe And Fittings For Tile Outlet Terraces.



COCALICO EQUIPMENT CO.

DRAINAGE & EXCAVATING

RD #3, DENVER, PA 17517

PH: 215-267-3808