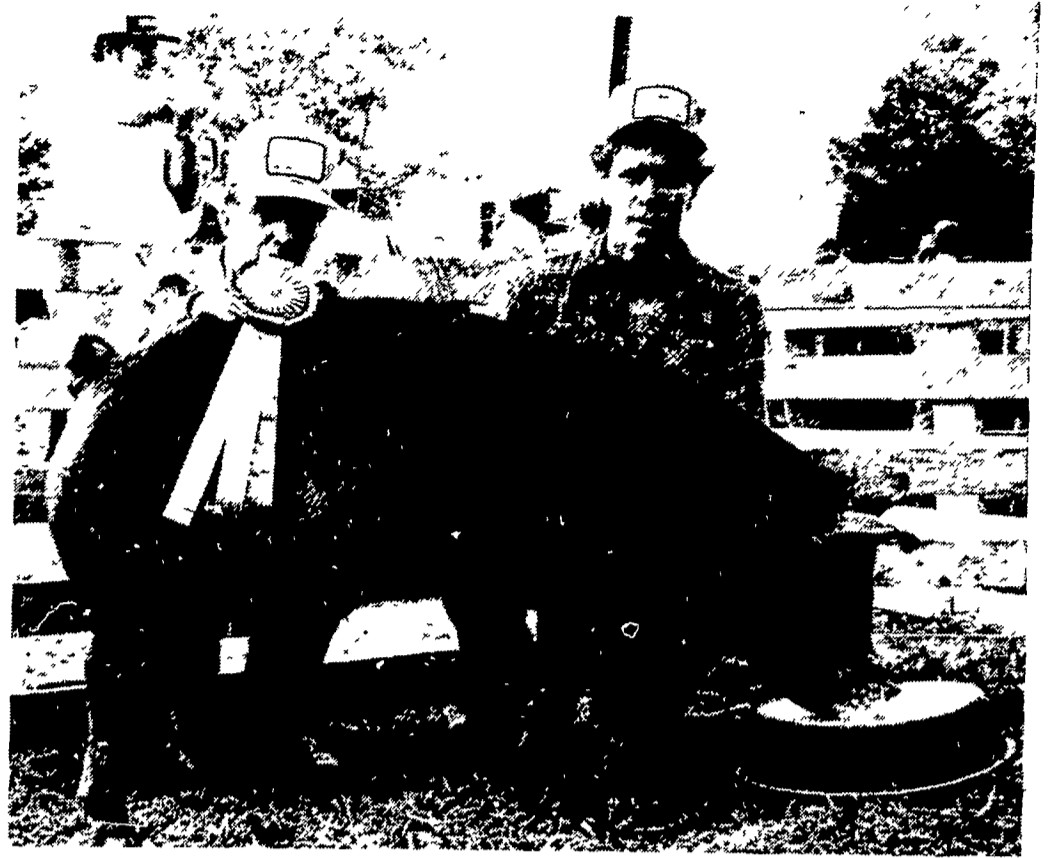




Carey's Slaughter House of Jermyn bought the grand champion market lamb exhibited at the Susquehanna County 4-H livestock sale. The lamb was bought from Denise Keen, Jermyn, for the record breaking price of \$2.55/lb. The reserve lamb was exhibited by Richard Sechrist of Little Meadows.



Scott Davenport of Montrose showed the champion market hog which was sold to Ted Hirsch, Bou-Matic dealer from Montrose. Hirsch bought the hog with a \$2.80 bid. This was the highest single price ever paid for a 4-H market hog. The reserve champion hog was exhibited by Denise Keen.



# SPEEDY CORN CRIBS

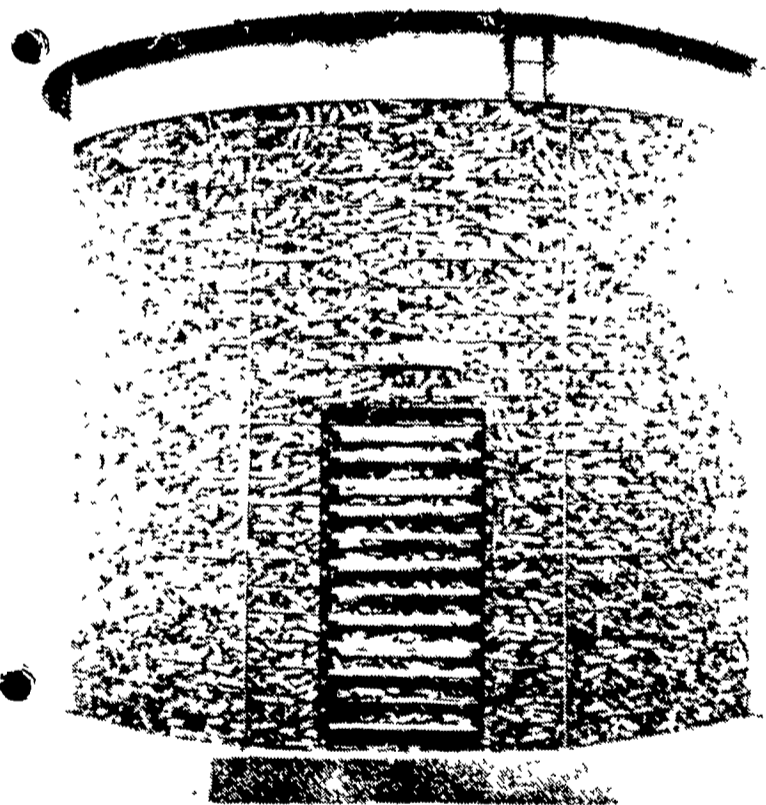
## BAR-LOK CONSTRUCTION

Cut Corn Crib Erection Time!  
Store More Corn For Less Money!

No other corn crib goes up as fast or as easy as the Speedy Crib with roof rafters. This feature, plus Bar-Lok side panels, minimizes corn crib erection time.

There's a Speedy Crib for every farm need, priced right for every budget.

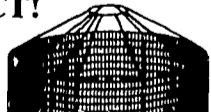
- **CHOICE OF 900, 1200 or 1700 BUSHEL SIZES**  
One of them is just right for your particular storage needs
- **5 OR 2 GAUGE WIRE MESH SIDE PANELS**  
The Speedy 5 gauge crib won't bulge or sag—stands straight and tall year after year. For extra strength and durability, get the 2 gauge crib. It outlasts other cribs even with full capacity loads.
- **STEEP (35°) or EXTRA STEEP (45°) PITCHED ROOF**  
You don't have to climb inside the crib to kick the corn to the edges. You fill right to the top with no wasted space.
- **SPECIAL 1700 BUSHEL CRIB**  
Bottom two thirds 2 gauge wire mesh, top one third 5 gauge wire mesh. Gives extra strength where the stress is the greatest.
- **OPTIONAL WEATHER-BAN**  
Two foot wide band of heavy gauge galvanized sheet—prevents rain and snow from entering top of the crib.



### EASY TO ERECT!

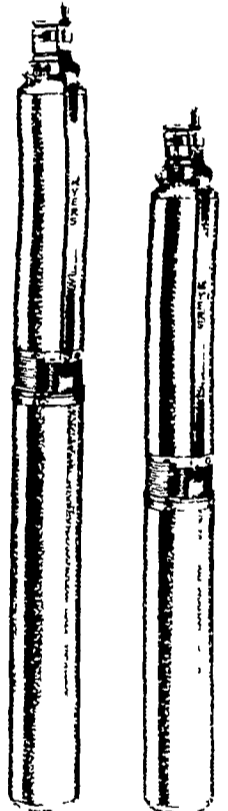


**Step 1—Bar Lok Construction** saves you time—gives you a strong, sturdy crib. Crib wire panels are interlaced to form an eye. A 13 x 3/4" rod is then inserted through the eye and pushed down to the foundation. Easy, simple, fast construction.



**Step 2—Rafters** are bolted to assembled rafter ring. Now you're ready to put the roof panels on. Rafters assure you of proper roof panel placement the first time. No wooden framework to build.

## Myers Country Water™



Stainless Steel Submersible Pumps

Myers "Country Water" Submersible Pumps are ideal for high capacity service on deeper wells. These dependable, efficient pumps provide 40 to 60 lbs. pressure from 4" diameter or larger wells 20 to 500 feet deep. Myers built motors are oil-filled for smooth, long life operation. Call us today, we'll be happy to suggest the Myers "Country Water" Submersible that's best for you. No charge for estimates.

### NOAH N. MARTIN CO.

Located on Rt. 340, Intercourse, PA  
Across From C.B. Hooper & Son  
"WE SERVICE WHAT WE SELL"  
PHONE 717-768-3531

YOUR "COUNTRY WATER" EXPERT

## All Models In Stock

# FARMERSVILLE EQUIPMENT INC.

RD 4, Ephrata, PA

717-354-4271

### HOURS

Mon., Tues., Wed., Fri. — 7:30-5:30  
Thurs. — 7:30-9:00  
Sat. — 7:30-3:00

