

Livestock market and auction news

Oklahoma Cattle

August 31, 1979

Thursday feeder cattle auction.

Estimated receipts 9,500 Same day last week 12,696 Trading active, market now steady to 2.00 higher after opening steady to firm. Majority receipts Choice and Mixed Good and Choice 500-900 lb. Feeder Steers and 400-700 lb. Heifers.

FEEDER STEERS: Small lot Choice 370 lb. 116.00-, Few 400-430 lb. 97.00-103.50, 500-600 lb. 88.75-96.25, 600-700 lb. 79.75-85.00, 700-800 lb. 75.75-83.25, 800-900 lb. 73.25-78.75; Mixed Good and Choice, lot 333 lb. 104.00-, lot 486 lb. 92.00, 500-600 lb. 82.75-86.50, 600-700 lb. 75.75-78.75, 700-850 lb. 72.50-75.00, part load 772 lb. 76.75; Few Good 540-675 lb. 70.50-76.50, Small lot Good Holstein Steers 407 lb. 95.00, lot 940 lb. 66.25.

FEEDER HEIFERS: Choice 375-410 lb. 95.00-95.50, 450-500 lb. 82.00-89.00. Lot 475 lb. 92.00. 500-600 lb. 74.00-

80.00, 600-800 lb. 70.50-75.25; Mixed Good and Choice, Lot 499 lb. 79.50, 500-700 lb. 70.25-73.25, small lot Good 580 lb. 69.90. DW

FOR THE WEEK: Feeder Steers under 500 lb. 2.00-4.00 higher, Feeder Steers over 500 lb. and Feeder Heifers steady to 2.00 higher, Slaughter Cows 2.00-4.00 Lower, late sales Utility and Commercial 2-3 45.25-49.00, Small lot 49.70. Low dressing and YG 3-4 43.00-45.25; Cutter 1-3 44.00-47.00. Slaughter Bulls steady to 1.00 lower; YG 1-2 1100-1700 lb. 60.00-64.00. Salable receipts this week near 31,500 head compared to 32,348 last week and 27,280 head a year ago. Feeder Cattle near 93 percent of the run and Slaughter classes made up seven percent of the offerings.

St. Louis Cattle

National Stockyards August 30, 1979

Receipts 5,300

Week Ago 6,100 Year Ago 7,000

Compared to the previous weeks close, slaughter steers and heifers mostly 2.50 lower. Cows 5.00-6.00 lower. Bulls mostly 2.00 lower. Slaughter supply mainly Choice and Mixed Choice and Prime 2-4 1050-1200 lb. steers, around 35 percent Heifers and 15 percent cows.

SLAUGHTER STEERS: Mixed Choice and Prime 2-4 1050-1275 lb. 63.00-65.00, closing 63.00-63.50. Choice 2-4 950-1300 lbs. 61.50-64.00, closing week sales 61.50-63.00. Mixed Good and Choice 2-4 900-1200 lbs. 60.00-63.00. Good 2-3 900-1175 lbs. 57.50-61.00. Standard to Good 2-3 1050-1400 lb. Holsteins 52.00-56.00.

SLAUGHTER HEIFERS: Mixed Choice and Prime 2-4 875-1050 lbs. 60.50-63.00, closing sales 60.50-61.00. Choice 2-4 800-1050 lbs. 59.00-62.00, closing 59.00-60.50. Mixed Good and Choice 2-3 700-975 lbs. 58.00-60.50. Good 2-3 700-950 lbs. 55.00-59.00.

COWS: Utility and Commercial 2-4 43.00-49.00. Boning Utility 1-2 46.00-51.00. Closing week sales 46.00-49.00. Cutter 1-2 44.00-55.00. Canner and Low Cutter 1-2 40.00-46.00.

BULLS: Yield Grade 1-2 1050-1900 lbs. 55.00-62.00, closing 55.00-60.00.

FEEDERS: Including around 800 head at regular auction. Feeder steers generally steady, instances 1.00-2.00 higher on weights over 600 lbs. Feeder heifers steady to 2.00 lower. Supply mainly Choice and Mixed Good and Choice 400-800 lb. steers and 300-700 lb. Heifers.

FEEDER STEERS: Choice 300-375 lbs. 104.00-106.00; small lot 275 lbs. 116.00; 400-500 lbs. 94.25-99.00, couple lots 525-550 lbs. 86.50-90.75; Lot 630 lbs. 87.00; Few lots 765-775 lbs. 71.25-75.00; Fleshy 800-1025 lbs. 64.00-69.00. Mixed Good and Choice 325-400 lbs. 92.50-97.50. Few lots Good 550-750 lb. Holstein Steers and Bulls 56.00-65.50.

SLAUGHTER HEIFERS: Choice 300-400 lbs. 84.00-92.00; 400-500 lbs. 79.00-83.00; 500-600 lbs. 72.75-80.25; 600-700 lbs. 66.50-73.50. Mixed Good and Choice 400-500 lbs. 76.50-78.75.

STOCK COWS: Good and Choice 900-1035 lbs., 4-7 year old 50.00-54.00. Lot Thin 840 lbs. 56.00.

Omaha Cattle

August 30, 1979

CATTLE: Through midweek, slaughter steers were 1.00-1.50 lower, and heifers weak to 50 cents lower. However, late supplies steers and heifers not

sufficient to reflect sharply increased demand created by upsurge in carcass trade after midweek. Cows close 2.00-4.00 lower, most decline on high-utility and commercial. Bulls were steady.

Four day receipts 13,600 Last week 15,200 A year ago 15,400

The fed cattle trade followed an erratic pattern. Prices were forced sharply downward the fore part of week as supplies expanded and carcass prices turned lower; however, a sizeable share of the early decline was regained on an active midweek session as marketings dwindled and carcass prices again pointed upward. Buyers were cautious and selective the fore part of week, but became aggressive at midweek to secure sufficient numbers for immediate slaughter requirements. There was mild feeder inquiry for two-way steers suitable for a short turn in the feedlot. The overall finish of the steer and heifer supply was rather attractive with a fairly liberal percentage choice. Steers made up approximately 47 pct. and heifers 30 pct. cows comprised 12 pct. and feeders 8 pct.

STEERS: On Monday, load choice and prime 3 1165 lbs. 66.25, load choice 3 1214 lbs. 66.50 late. At midweek, load and part load choice and prime 3-4 1100-1165 lbs. 65.50-65.75, load same grade 3-4 1150 lbs. 65.00 Choice 2-4 1000-1250 lbs. closed 63.50-65.00. Mixed good and choice 2-3 975-1200 lbs. 63.50-64.00. Good 2-3 60.00-63.00.

Average of Ls-214, detailed quotations for choice 900-1100 lb. steers this week

64.72, choice 1100-1300 lbs. 64.55. Average weight steers for this week 1135 lbs. as compared 1133 lbs. the previous week. Average weight heifers this week 979 lbs. as compared 988 lbs. the previous week.

HEIFERS: Load choice and prime 3 with end 4 1023 lbs. 64.50 Wednesday moderate volume same grade 3-4 950-1025 lbs. 63.50-64.00 during week. Choice 2-4 900-1100 lbs. 62.00-63.50. Mixed good and choice 2-3 850-1025 lbs. 60.50-62.00. Good 2-3 53.00-60.00.

COWS: Utility and commercial 2-4 44.50-47.00, few cutter and boning utility 47.50-48.00. Cutter 45.00-47.00. Canner and low-cutter 42.00-45.00.

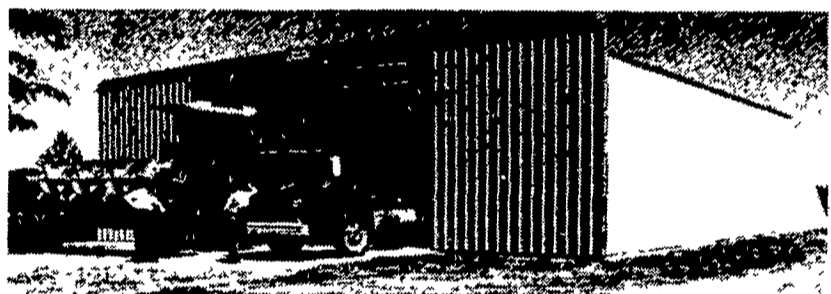
BULLS: 1-2 1400-2200 lbs. 56.00-62.00, several 1 63.00-65.00.

FEEDERS: Few loads choice 975-1050 lb. steers 64.00-65.00, load choice and prime 1014 lbs. 65.50.

MILK



BUTLER CLEAR SPAN BUILDING



FARMSTED I

30'x50'x11'

LESS THAN \$4000

FARMSTED I GALV ROOF & WALLS 16'x10' Double Slide Door

40'x50'x14'

LESS THAN \$5000

FARMSTED I GALV ROOF & WALLS 20'x13' Double Slide Door

50'x50'x16'

LESS THAN \$7000

FARMSTED I GALV ROOF & WALLS 24'x15'7" Double Slide Door

60'x50'x16'

LESS THAN \$8500

FARMSTED I GALV ROOF & WALLS 30'x15'3" Double Slide Door

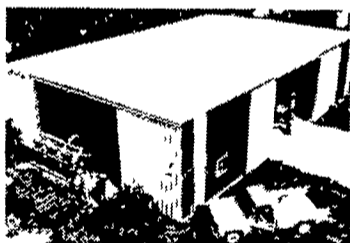
ALL BUILDINGS F.O.B. ANNVILLE, PA.

VARIOUS SIZES HEIGHT & WIDTH AVAILABLE

(Buildings not equipped as shown)

... Special Grain Storage Buildings Available

ALSO



FARMSTED II AND



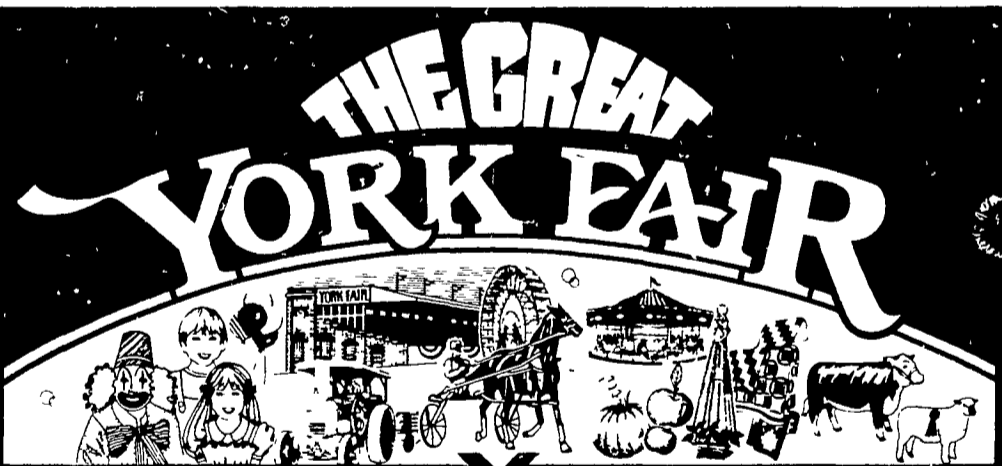
AG-MASTER 2:12

P.E. HESS, BUTLER MFG. CO. Box 337, Oxford, PA 19363

Name _____
Address _____
City _____
State _____ Zip _____
Phone _____ (include area code) LF

CALL YOUR BUTLER AGRI-BUILDER TODAY

Beatty & Nelson Contractor	717 677 9310	O A Newton & Son-Co	302 337 8211
C & M Sales Inc	717 253 1612	Royer's Farm Service	717 837 3201
A E Engel Inc	609-983-4404	D E Smith Inc	717 436 2151
Knoxville Construction	814 326 4188	Glenn M Stahlman	301 777-0582
Kalferlin Sales & Service	814 438-3180	Tap Enterprises Inc	215-929 2553
Greenside Contracting	301 472 9161	Temco Parts Co Inc	301-778 4454
Orville Mack	215 759 1331	Tri County Agri Systems	609 467 3174
Leroy E Myers Inc	301 582 1552	Tri State Marine Dist Inc	301 867 1447
Al Maurer	717 864 3135	Walter J Construction	717 392 8280
W R Moody Contractor	412 872 6804	Glossner's Concrete Service	717 962 2564



SEPT. 7-15 '79

Leif Garrett

Horticultural Displays

Peaches & Herb

PENNSYLVANIA'S LARGEST

Rides & Thrills

Livestock Judging

This year, bring the whole family to the York Fair. There's fun for everyone and ... it's just a short drive away!

AMERICA'S OLDEST FAIR

For Grandstand information, phone 717/848 2086