

Pa. goose blind applications accepted

Applications for hunting from goose blinds at the Pennsylvania Game Commission's two controlled hunting areas at Pymatuning and Middle Creek will be accepted from September 1 through September 20.

Hunters are permitted to apply to only one of the two areas. If a person applies to both areas, that person will not be eligible to hunt on either area.

A hunter will be permitted only one hunting trip to a controlled goose shooting area. If a person hunts geese on one area, that person will not be eligible to return to that facility as a hunter this year, and that person will not be eligible to hunt on the other controlled goose shooting area in 1979.

There are 40 goose blinds at Pymatuning, and 25 will be in operation this year at Middle Creek. Drawings will be held by the Game Commission at Pymatuning and Middle Creek in late September to select blind holders for both controlled shooting areas.

A reservation will entitle the applicant to bring not more than three guests. The guests must be present to register.

At Middle Creek, there will be four shooting days each week of the season, on Mondays, Tuesday, Thursdays and Saturdays. Shooting at Pymatuning will also take place on four days, but on Mondays, Wednesdays, Fridays and Saturdays.

Reservation requests must be made on official application forms. Application forms for hunting geese at Pymatuning are on orange-colored stock, while the application forms for goose hunting at Middle Creek are on yellow stock. Hunters should be sure to fill out the correct form, since a Middle Creek application cannot be used for Pymatuning or vice versa.

Applications must be submitted either to the Pennsylvania Game Commission, Pymatuning Waterfowl Area, R. D. 1, Hartstown, PA 16131, or to the Pennsylvania Game Commission, Middle Creek Wildlife Management area, R. D. 1, Newmanstown, PA 17073.

The applicant's 1979-80 hunting license number, including the letter, must be listed on the application. Applications must be marked no earlier than

September 1 but not later than September 20; if the postmark is earlier than September 1 or later than September 20, the application will be rejected.

Only successful applicants, as determined in the drawings, will be notified. Reservations are not transferable.

The successful applicant whose name appears on the reservation must present the reservation in person at either the Pymatuning Waterfowl Area headquarters (registration building) located on Legislative Route 20006 between Hartstown and Linesville about four miles north of Hartstown, or at the Middle Creek Wildlife Management Area visitors center located on Hopeland Road about two miles south of Kleinfeltersville.

Hunters should arrive at least one hour before shooting time to allow for the issuance of permits. All reservations for any one day will be valid only up to one-half hour before shooting time on the specified day.

A federal migratory bird hunting stamp (duck stamp) is required to hunt geese and ducks. 1979-80 hunting licenses and duck stamps must be presented at the check station.

Only one official application per person may be submitted. Anyone submitting more than one application for a reservation will have all applications rejected. Further, individuals filing more than one application or hunting more than one time per person on a controlled goose hunting area in the state will be denied the privilege of

hunting on these areas for three years.

Provisions have been made at both Middle Creek and Pymatuning to accommodate handicapped persons if they are successful applicants.

Shooting hours for the controlled goose hunting areas at both Pymatuning and Middle Creek are from one-half hour before sunrise until noon. Hunting starts at 9 a.m. at Pymatuning on November 3. There is no hunting from goose blinds at Middle Creek on November 3.

BECOME ENERGY INDEPENDENT! MAKIN' IT ON THE FARM-ALCOHOL FUEL

A 96 page booklet, illustrated, provides the latest "how-to-do-it" information. Farmers all over the country are learning how to make alcohol fuel from grains & other crops to fuel tractors, trucks, cars. Price \$2.95. GASOHOL USA is a new magazine reporting the latest national and international news in this "growing" new energy field. Available after Sept. 5. Single issue price \$1.50. Special offer - Send only \$3.00 (Pa. residents include 18% sales tax) for both & also receive information on simple water-alcohol injection system that improves mileage, performance and engine life. Send to: Richard Dunkelberger, Box 72 Shamokin Dam, Pa. 17876.

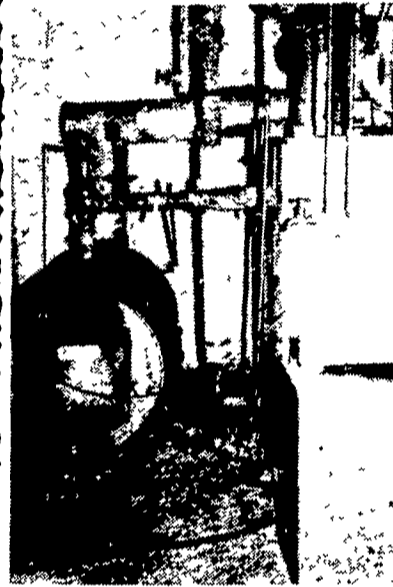
**FARM ALCOHOL - THE KEY TO A HIGHER
FARM INCOME**

York County DHIA

(Continued from Page 129)

412	3	2-10	305	16,026	34	542
William Ruppert						
Knot	3	8-8	291	14,829	35	512
Wendy	3	4-8	305	18,242	37	674
Emily	3	6-8	274	17,381	38	658
Bobby	3	8-4	305	19,349	32	587
Galawn Farms						
Susie	3	8-3	305	21,223	36	706
Nancy	3	3-4	305	16,734	39	650
Lila	3	2-2	305	13,529	39	529
Blackie	3	2-1	305	15,140	37	559

KEYSTONE WOOD FIRED WATER HEATING STOVE



A proven stove to set with your present heating system, controlled by either electronic or non-electric controls.

2 size stoves, one for 30" and one for 48" wood, 12x12" feed door and 8" flue out the back of stove.

Also the same stoves are made for coal fired.

The stove in picture is set up with an oil fired boiler and heated a 6 room house with gravity circulation last winter.

For more information contact:

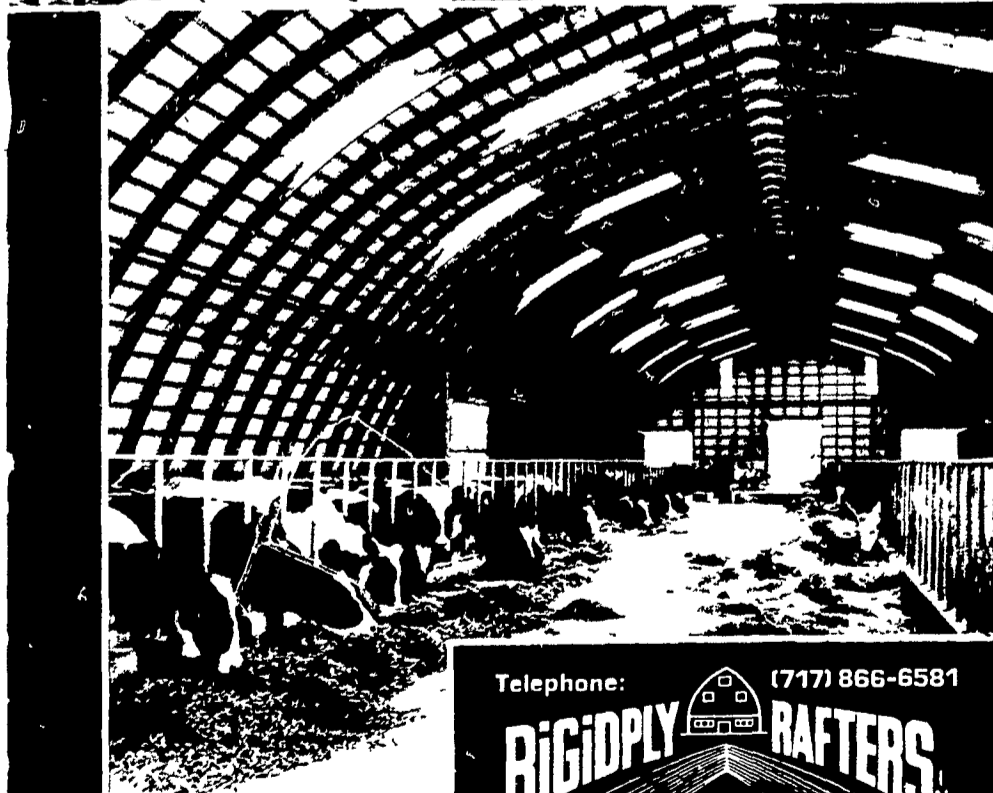
DAVID K. STOLTZFUS

382 Newport Road, Ronks R.1 Pa.
2½ Miles South of Leola on Route 772



Laminated Rafters:

**The First Choice
for Economical Space.
True Flexibility
and Total Satisfaction...**



Telephone: (717) 866-6581

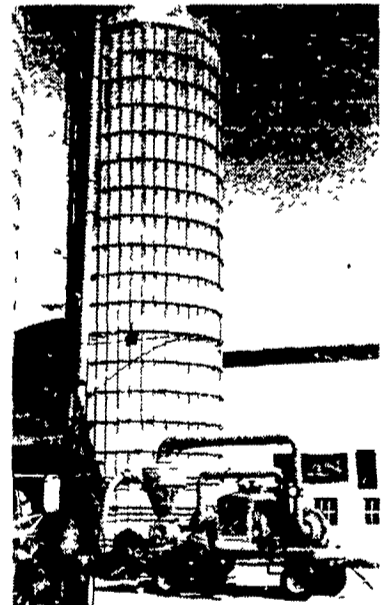
RIGIDPLY RAFTERS
MANUFACTURERS of
LAMINATED RAFTERS
and WOOD ROOF TRUSSES

RICHLAND RD1, Pennsylvania 17087
OAKLAND RD2, Maryland 21550

Neuro

AIR/LEG GRAIN CONVEYORS

- Portable • Safer
- Less Labor • Save Money



Why spend thousands of dollars on installing a leg and auger system for grain handling, when a Neuro pneumatic conveying system will do the job far easier and for a lot less money?

In addition, a Neuro System is more gentle on your grain reducing breakage dramatically over augers and legs. You also gain versatility with a Neuro System because it's portable - move it anywhere, as opposed to fixed-location legs and augers. Get out of the dust - save your health - with a Neuro System! Let us show you the many advantages of our wide selection of PTO or self-powered models. Contact us this week for full details.



Advanced Ag Products

RD 2, Box 174
Elverson, PA 19520
215-286-9118



NEURO CORPORATION

1201 HAWTHORNE LANE
WEST CHICAGO, ILLINOIS 60185
Telephone (312) 231-9020