

Pa. red meat production down slightly

HARRISBURG — Red meat production for Pennsylvania during July 1979 totaled 78.9 million pounds, down seven per cent from a year earlier according to the

Pennsylvania Crop Reporting Service. Cattle slaughter at 59,400 head was down eight per cent from a year ago and calf slaughter at 18,500 was down 35 per cent. Hog

slaughter at 237,500 head was up 18 per cent and sheep and lamb slaughter at 12,900 was up 34 per cent.

Nationally, commercial red meat production in July 1979 totaled 2.96 billion pounds, up three per cent

from July 1978. Beef production at 1.68 billion pounds was down nine per cent from a year ago. Veal production at 34 million pounds was down 23 per

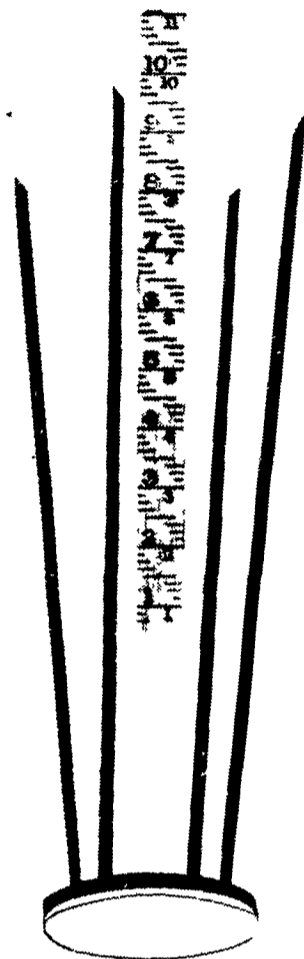
cent. Pork production totaled 1.22 billion pounds, up 27 per cent from a year. Lamb and mutton production declined four per cent to 2 million pounds.

WHAT'S NEW

Tank Bottom Shield Protects Environment

Long term use of gauge poles may lead to a costly puncture in any fiberglass or steel tank. It is a seemingly unavoidable risk because measurements must be taken regularly. But there is now a way to economically protect tank bottoms from pole wear. Weil's Tank Bottom Shield absorbs the impact of gauge pole strikes and eliminates the possibility of this kind of failure. Its all steel construction insures maximum strength and lasting durability, while the buna-N bottom pad cushions the tank bottom from the shield.

Weil Tank Bottom Shields are easily installed in both new and existing tanks. Simply squeeze the splines together, insert it in the drop tube, and push it to the bottom of the tank with a gauge pole. No other tool is necessary. The splines remain compressed inside the drop tube, locking the Shield firmly in place. It is an easily removed just by lifting out the inside aluminum core of the drop tube. Tank Bottom Shields have been tested and approved by most major oil companies. The Shield can only be used in tanks with drop tubes. Weil can supply



drop tubes for those who have no regular source. Full particulars on Bulletin dn-16 from Weil Service Products Corporation, 2434 West Fletcher Street, Chicago, Illinois 60618.

Dairy

for the Good Taste

AERIAL SPRAYING



Soybeans -

Foliar application of Folian will increase yields.

Limestone -

Apply Lime on Barley and Wheat ground. Avoid the fall rush.

Alfalfa -

Did you top dress after 1st cutting? If not, do it now.

Alfalfa-Wheat-Barley

ORDER SEED NOW
Supply May be Limited

Corn Silage -

Make Plans now to use Anhydrous Ammonia as an NPN Source



BULK BLENDS
MASTER FARMER
ANHYDROUS AMMONIA

ORGANIC
PLANT
FOOD CO.

2313 NORMAN ROAD, LANCASTER, PA.
PHONE: 717-397-5152

THE NEW ANSWER?

Use

Sila-Prime



A PROBIOTIC FERMENTATION AID

The Natural Way To Improve Haylage/Silage

- * ALFALFA
- * CEREAL GRAINS
- * CLOVER
- * CORN SILAGE
- * FORAGE SORGHUM
- * GRASS
- * BALED HAY
- * HIGH MOISTURE CORN

StarLabs

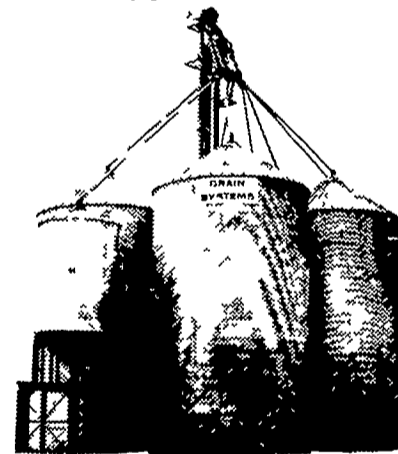
- * CATTLE & HOG MINERALS
- * CUSTOM CANVASS WORK

AARON S. GROFF & SON

FARM & DAIRY STORE
RD 3 Ephrata, PA 17522 (Hinkletown) Ph 717-354-4631
Store Hours: 7 A.M. to 9 P.M.
Closed Tues., Wed. & Sat. at 5 30 P.M.

BIN SALE

Our Prices Have Never Been Better!



| | |
|--------------------|---------|
| 18' 4,239 bu. bin | \$1,776 |
| 24' 7,727 bu. bin | \$2,646 |
| 30' 12,372 bu. bin | \$3,536 |

Freight Not Included

All Sizes Available

We can handle the complete job or we lend our erection jacks to our customers free of charge so you can save even more!

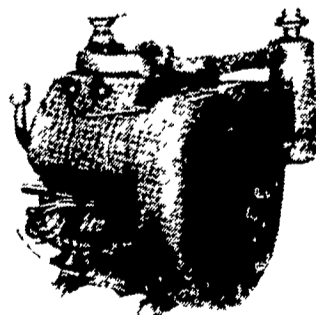
Leasing Available

Call For Additional Information

GAYLORD EQUIPMENT

88 Ridge Rd., Monmouth Jct., NJ 08852
(day) 201-329-2666 or (night) 609-799-8647

WISCONSIN ENGINES

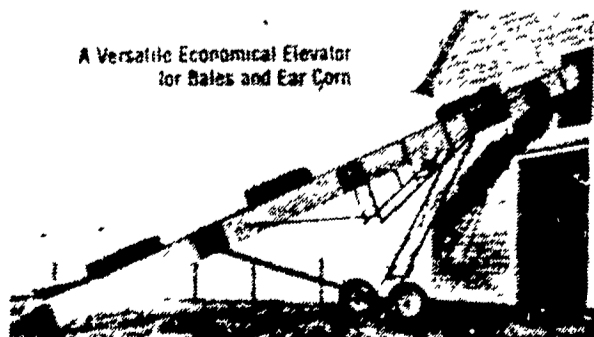


- * New & Used
- * Your Authorized Dealer
- * We Make Service Calls

ZIMMERMAN PORTABLE ELEVATORS

Will Carry Your Corn And Hay

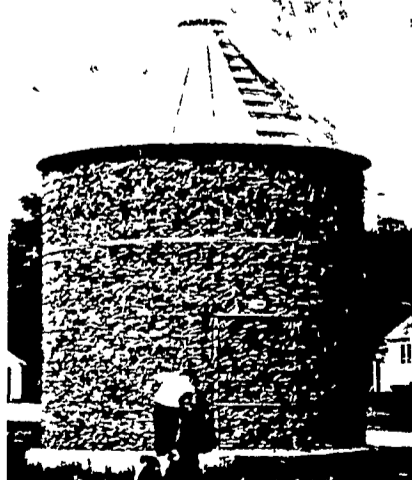
A Versatile Economical Elevator for Bales and Ear Corn



28 ft. \$910 32 ft. \$975
36 Ft. and 40 Ft. Also Available

BEHLEN "STEEP PITCH" CORN CRIBS

Built for a Lifetime of Rugged Service. Every Behlen Corn Crib is Hot-Dip Galvanized after welding completely covering all surfaces (including weld spots) with up to 6 times the amount of zinc found on ordinary cribs. You'll Never See a Stronger Crib. The Behlen Crib is made of No. 4-gauge Bar Mesh Steel. Weathertight "Steep Pitch" roof fills to the peak without hand leveling. Extrawide crib doors. In sizes from 679 to 2,155 bushels



| | |
|---------------|------------|
| 865 bu. cap. | Sale \$705 |
| 1205 bu. cap. | Sale \$765 |
| 1685 bu. cap. | Sale \$935 |

SALES & SERVICE

MILLER'S REPAIR

1 Mile North of Bird-in-Hand
8 miles East of Lancaster
RD1, Bird-in-Hand, PA Phone 717-656-9013