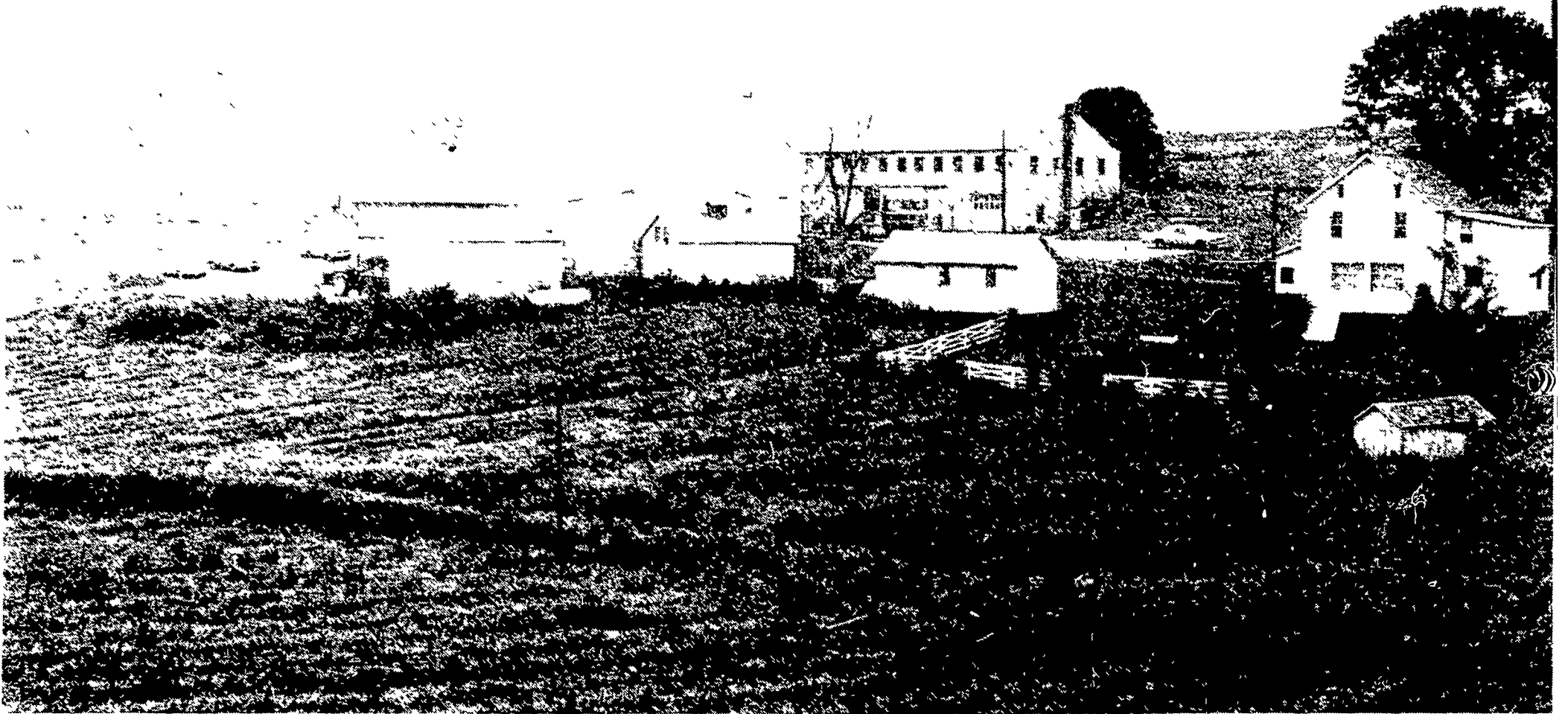


Open House this weekend



This is the original farm where George Wolf first started his potato and chicken operation. Originally he farmed 115 acres, and now his family is involved in working 1200 acres yearly, as well as handling the egg

production end of the farm. Now the potato processing is based on this farm.

Wolf Farms Inc. is truly a family affair

By KENDACE BORRY STEWARTSTOWN — If you're interested in seeing the latest in egg packing and potato operations, then you might want to travel to Wolfe Farms Inc., near Stewartstown, on August 26. There from 1 to 4 p.m. they will be holding an open house that will include door prizes, cooking demonstrations (including omelets and crepes), hayrides, and a mobile radio station operation. Both the potato operation and the egg packing plant will be open to the public, according to Ginger Wolf, director of promotion and advertising.

The Wolf Farm operation is a family based affair, with father George Wolf,

president and in charge of the operation. Then there are sons Daniel, field and crop manager, David, potato manager, and Jim, general manager of the egg division, and daughters Susan, sales manager, and Ginger, now a senior at Penn State, who will shortly be filling in full time as director of promotion and advertising.

And you can't forget Mrs. Hazel Wolf, mother, who acts as financial manager.

According to George Wolf, he made the decision to go into farming in 1948, and he chose potatoes because he liked them, and chickens because there were already some on the farm. Starting with 115 acres, on his wife's

family farm, he also fed cattle and hogs.

He told that the children's involvement in the farm was their own idea, and that he thought it was great. He never thought that the farm operation would get so large.

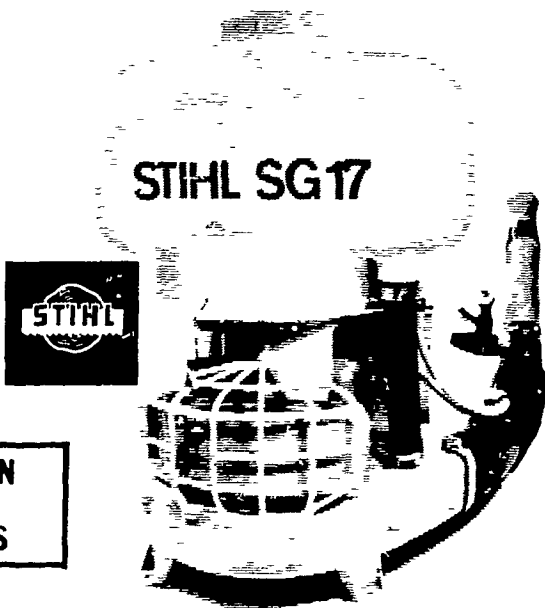
Today the Wolfs' farm 1200 acres, with 170 acres in potatoes, 600 acres in corn, 300 acres in soybeans (double-cropped), 350 acres in small grains, and 150 acres of hay. Now in the process of remodeling their poultry operation, when it is completed they will have a capacity of 120,000 birds. And, on an average day, they process 32 tons of potatoes.

The primary reason for the open house is the newly

(Turn to Page 17)

STIHL® MODEL SG-17 MISTBLOWER

A multi-purpose power tool which Blows, Dusts, & Sprays liquids and dry chemicals, to control and eliminate weeds. Complete tobacco, worm and sucker control - covers total leaf over and under. Complete fly and insect control in and around barns.



FREE DEMONSTRATION
CHAIN SAW &
METAL SAW RENTALS

A & B SALES & SERVICE
2 Miles South of Rt. 23 Along 772
Thru Monterey - RD 1 Ronks, PA

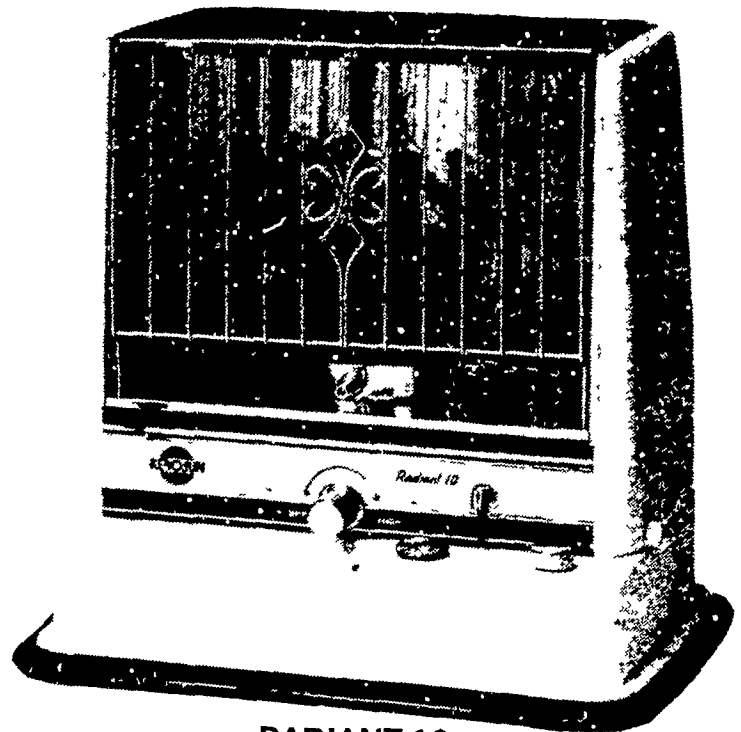
STOLTZFUS WOODWORK
RD Gap, PA Box 183
1 Mile North Rt. 897 From Gap

WES STAUFFER SMALL ENGINES

RD 3 Ephrata, PA
Phone (717) 733-9174
½ Mile South on Rt. 322 on
Pleasant Valley Rd Ephrata Exit New Rt. 222

KERO-SUN^{INC}

THE WORLD'S FINEST PORTABLE HEATERS



RADIANT 10

The long-burning champion of the Kero-Sun line Burns over 30 hours on less than two gallons of fuel Pushbutton built-in battery powered igniter Protected in event of tip-over by automatic shutoff Cooktop White baked-enamel finish Clear view fuel gauge Compact and fully portable Dimensions 21"W x 15¼"D x 19"H Radiant and convection heat Output 9,400 BUT/hour

Puts the WARM where you want it!

Bowman's Stove Shop

R D 3, Napierville Road
Ephrata, PA 17522
Follow the signs from the light at Hinkletown

717-733-4973

Tues, Wed Sat 9-5
Thurs, Fri. 9-9
Monday - Appointment Only