

Livestock market and auction news

Peoria Cattle

August 9, 1979

Receipts around 4100 this week: 4285 a week ago and 4925 a year ago. Slaughter steers and heifers fully 2.00-2.50 lower with majority of late sales off 2.50 and instances 3.00 lower for the week. Most decline on steers and heifers on Choice and Prime. Cows 3.00-5.00 lower. Bulls steady. Steers and heifers went into the fourth straight week of decline led

by a moderate increase in slaughter and a sluggish and much lower meat trade. Local steer receipts contained fewer loads over 1200 lbs. than late July period.

SLAUGHTER STEERS: Mixed Choice and Prime 3-4, few 5, 1100-1275 lbs. 56.50-58.00, late 1100-1200 lbs. 56.50. Choice 2-4 975-1200 lbs. 55.50-59.00, load 1134 lbs. Monday 59.50 and few head 60.00; late 55.50-57.00 with few 3-4 1200-1240 lbs. 54.00-55.00. Mixed Good and Choice 2-3 900-1200 lbs., late 54.00-55.50, early to

57.50. Good 950-1250 lbs. closed 51.00-54.00 and some Good, few Choice 1200-1400 lbs. holsteins 50.00-52.00.

SLAUGHTER HEIFERS: Mixed Choice and Prime 3-4 950-1050 lbs. closed 56.00-56.50, early to 58.00. Choice 2-4 900-1050 lbs. 54.00-56.00 on close; early 56.00-58.00. Mixed Good and Choice 2-4 800-1100 lbs. 51.00-54.00, early to 56.50, Good 2-3 750-1000 lbs. 50.00-52.50, few Good, including some 1000-1100 lbs. heiferettes 48.00-51.00.

COWS: Utility and Commercial 2-4 41.00-44.00, some early 45.00-47.00 and few Boning Utility 1-2 50.00-52.00. Cutter 1-2 40.00-43.00 late.

BULLS: Yield Grade 1-2 1100-1800 lbs. mostly 55.00-60.00 except individual yield grade 1 1700 lbs. 62.50 and individual yield grade 3 1600 lbs. 46.00.

Joliet Cattle

August 9, 1979

Friday through Wednesday's salable receipts

4,700; 5 days last week 4,898; same period last year 6,611. Trading slow for the week. Slaughter steers closed the week 3.00 to 5.00 lower than Wednesday of last week. Slaughter heifers closed the week 3.50 to 5.00 lower. Cows closed the week 3.00 to 5.00 lower.

SLAUGHTER STEERS: mixed high Choice and Prime 3-4 1150-1300 lbs. 59.00-59.50; 2 loads 60.00 Monday; 57.50-58.50 Monday; YG 4-5 1250-1430 lbs. 56.50-59.00 Monday; 53.00-57.00 Wednesday. Choice 2-3 1240 lbs. 1 load 59.00 Wednesday. Choice 2-4 1050-1300 lbs. 57.00-59.00 Monday; 56.00-57.50 Wednesday. Mixed Good and Choice 2-3 1000-1250 lbs. 55.00-56.00 Wednesday.

SLAUGHTER HEIFERS: Mixed Choice and Prime 3-4 950-1050; 2 loads 58.75 Monday; 56.50-57.00 Wednesday. Choice 2-4 900-1050 lbs. 56.50-58.50 Monday; 55.00-56.50 Wednesday. Mixed Good and Choice 2-3 800-1000 lbs. 55.00-56.50 Monday; 53.50-55.00 Wednesday.

COWS: Utility & Commercial 2-4 46.00-49.00 Monday; 40.00-43.00, few 44.00 Wednesday.

Grade #1 slaughter bulls 49.85-62.25.

CALVES 154. Choice vealers 88.00-96.50, Good 86.50-92.00, Standard & Good 110-130 lbs. 74.50-87.00, 90-110 lbs. 70.00-82.50, 65-90 lbs. 50.00-75.00. Farm calves, holstein bulls 90-115 lbs. 88.00-104.00; holstein heifers 110.00-140.00.

HOGS 184. US No. 1-2 barrows & gilts 38.50-40.00, No. 1-3 35.85-38.50. US No. 1-3 sows 21.50-30.10.

FEEDER PIGS 351. US No. 1-3 20-35 lbs. 9.50-14.00 per head, No. 1-3 14.00-40.00 per head.

SHEEP 23. Choice spring slaughter lambs 48.00-59.00, Good 40.00-47.50. Slaughter ewes 22.00-28.00.

Baltimore USDA

August 6, 1979

CATTLE 275: Supply mostly cows weak to 50 cents lower. Other classes scarce.

COWS: Utility 2-3 45.60-50.75; individual 51.50. Cutter 41.00-47.10.

BULLS: Few YG 1-2 1090-1430 lbs. 58.0-63.50. Individual 1 1810 lbs. 68.75.

FEEDER CATTLE: Choice steers 830-995 lbs. 56.85-63.00; 550-685 lbs. 67.50-75.50; Choice steer calves 325-515 lbs. 77.25-84.00.

HOGS 800: Compared to last Tuesday, Barrows & Gilts \$1.00 lower. US 1-2 200-240 lbs. 37.25-37.50, some uneven weights 37.00; US 2-3 230-260 lbs. 36.25-37.25.

SOWS: Steady. US 1-3 300-600 lbs. 25.00-25.50.

VEAL AND CALF AUCTION 50: Choice 180-290 lbs. vealers 91.00-98.00; Good & Choice 75-95 lbs. 65.50-

75.00; 95-120 lbs. 75.0-85.50; few Choice calves 270-300 lbs. 82.50-90.00; few calves returned to farm 73.00-84.00.

SHEEP AUCTION: Couple Good slaughter ewes 22.50-24.50.

Omaha Cattle

August 9, 1979

Midweek prices on slaughter steers were 2.50 to 3.00 lower and heifers 2.00 to 3.00 lower. Cows 3.00-4.00 lower and bulls weak to 1.00 lower.

Four day receipts 10,378 compared 12,355 last week and 16,382 a year ago.

Fed cattle trade followed the same pattern as the previous week; live prices were again forced sharply downward in reflection of a sluggish downtrending carcass trade through midweek despite relatively small supplies and a moderate daily rate of slaughter. Buyers were generally not aggressive for maximum numbers and yield grade continued to be the major price-determining factor with best demand for choice 2-3. During the past four weeks, price declines generally have totaled 9.00-10.00 per cwt. There was some decrease in the volume of consignments predominantly 4 with a moderate increase in good and choice new crop cattle. Slaughter steers made up approximately 51 pct. and heifers 36 pct. with a large share high-good to average-choice. Cows contributed 12 pct., feeders continued scarce.

STEERS: Early, several loads choice 3 1100-1225 lbs. 60.00-60.50. At midweek low-time choice 2-4 1050-1275 lbs. ranged 57.00-58.35, many sales 57.50-58.00. Mixed good and choice 2-3 1000-1250 lbs. 56.50-57.50. Good 2-3 53.00-56.50, Holsteins 50.00-51.75.

Average of LS-214 detailed quotations for choice 900-1100 lb. steers this week 58.28, choice 1100-1300 lbs. 58.28. Average weight steers this week 1165 as compared 1149 lbs. the previous week. Average weight heifers this week 963 lbs. as compared 987 lbs. the previous week.

HEIFERS: Load choice 3 975 lbs. 59.25 early. At close, choice 2-4 875-1100 lbs. 56.00-57.00. Mixed good and choice 2-3 850-1050 lbs. 54.50-56.00. Good 2-3 50.00-54.00.

COWS: High-cutter and boning utility 1-3 43.00-44.00, few 44.50-45.00; other utility and commercial 2-4 41.00-43.50. Cutter 42.00-44.00 canner and low-cutter 38.00-42.00.

BULLS: 1-2 1400-2000 lbs. 54.00-60.00, an individual 1 65.50 early.

2500 DEKALB 231 PULLETS 20 wks. Aug. 24 - Also - Pullets Available Oct. & Nov. MOYER'S CHICKS, INC. 215-536-3155

Receipts around 4100 this week: 4285 a week ago and 4925 a year ago. Slaughter steers and heifers fully 2.00-2.50 lower with majority of late sales off 2.50 and instances 3.00 lower for the week. Most decline on steers and heifers on Choice and Prime. Cows 3.00-5.00 lower. Bulls steady. Steers and heifers went into the fourth straight week of decline led

by a moderate increase in slaughter and a sluggish and much lower meat trade. Local steer receipts contained fewer loads over 1200 lbs. than late July period.

SLAUGHTER STEERS: Mixed Choice and Prime 3-4, few 5, 1100-1275 lbs. 56.50-58.00, late 1100-1200 lbs. 56.50. Choice 2-4 975-1200 lbs. 55.50-59.00, load 1134 lbs. Monday 59.50 and few head 60.00; late 55.50-57.00 with few 3-4 1200-1240 lbs. 54.00-55.00. Mixed Good and Choice 2-3 900-1200 lbs., late 54.00-55.50, early to

57.50. Good 950-1250 lbs. closed 51.00-54.00 and some Good, few Choice 1200-1400 lbs. holsteins 50.00-52.00.

SLAUGHTER HEIFERS: Mixed Choice and Prime 3-4 950-1050 lbs. closed 56.00-56.50, early to 58.00. Choice 2-4 900-1050 lbs. 54.00-56.00 on close; early 56.00-58.00. Mixed Good and Choice 2-4 800-1100 lbs. 51.00-54.00, early to 56.50, Good 2-3 750-1000 lbs. 50.00-52.50, few Good, including some 1000-1100 lbs. heiferettes 48.00-51.00.

COWS: Utility and Commercial 2-4 41.00-44.00, some early 45.00-47.00 and few Boning Utility 1-2 50.00-52.00. Cutter 1-2 40.00-43.00 late.

BULLS: Yield Grade 1-2 1100-1800 lbs. mostly 55.00-60.00 except individual yield grade 1 1700 lbs. 62.50 and individual yield grade 3 1600 lbs. 46.00.

SLAUGHTER HEIFERS: Mixed Choice and Prime 3-4 950-1050; 2 loads 58.75 Monday; 56.50-57.00 Wednesday. Choice 2-4 900-1050 lbs. 56.50-58.50 Monday; 55.00-56.50 Wednesday. Mixed Good and Choice 2-3 800-1000 lbs. 55.00-56.50 Monday; 53.50-55.00 Wednesday.

COWS: Utility & Commercial 2-4 46.00-49.00 Monday; 40.00-43.00, few 44.00 Wednesday.

L & M FUR & WOOLEN ENTERPRISE

Quality Electrified Sheepskins & Furs
Tannery Direct Dist Wholesale & Retail
Check Our Quality Price & Services!
Mail & Phone Orders Accepted



Woolen Hosp Pads - Natural & All Colors
Pa Largest Selection of Woolen Products
Sheepskin Coats at Reasonable Prices
See Us At Meadowbrook Market in Leola

117 W Summit St., Mohnton, PA
215-777-2465

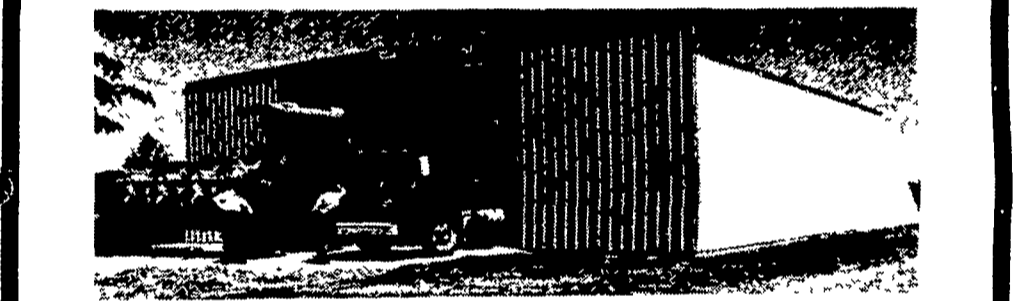
Hours Mon Fri 9-8 30, Sat 9-5
Wed 9-4 30, Sat 9-5

Dealers Wanted

BUTLER CLEAR SPAN BUILDING

1-PER COUNTY Display Buildings Only

Buy a building at list price and get twice the length for only 50% more



FARMSTED I

30'x50'x11' LESS THAN \$4000

FARMSTED I GALV. ROOF & WALLS
16'x10' Double Slide Door

40'x50'x14' LESS THAN \$5000

FARMSTED I GALV. ROOF & WALLS
20'x13' Double Slide Door

50'x50'x16' LESS THAN \$7000

FARMSTED I GALV. ROOF & WALLS
24'x15'7" Double Slide Door

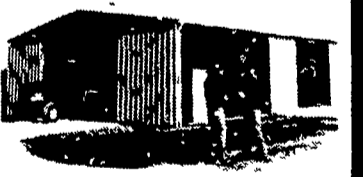
60'x50'x16' LESS THAN \$8500

FARMSTED I GALV. ROOF & WALLS
30'x15'3" Double Slide Door

ALSO



FARMSTED II AND



AG-MASTER 2:12

P. E. HESS, BUTLER MFG. CO.
Box 337, Oxford, PA 19363

Name _____

Address _____

City _____

State _____ Zip _____

Phone _____ (include area code) LF

ALL BUILDINGS F.O.B. ANNVILLE, PA. (Buildings not equipped as shown)

VARIOUS SIZES HEIGHT & WIDTH AVAILABLE

... Special Grain Storage Buildings Available

CALL YOUR BUTLER AGRI-BUILDER TODAY

Beatty & Nelson Contractor 717 677 9310	A. E. Newton & Son Co 302 337 8211
C & M Sales Inc 717 253 1612	Royer & Farm Service 717 437 3201
A. E. Engel, Inc 609 983 4404	D. E. Smith, Inc 717 436 2151
Knoxville Construction 814 326 4188	Glenn M. Stahlman 301 777 0542
Mollerlin Sales & Service 814 438 3180	Tap Enterprises Inc 215 929 2553
Greenside Contracting 301 472 9161	Temco Parts Co Inc 301 778 4454
Orville Mack 215 759 1331	Tri County Agri Systems 609 467 3174
Leroy E. Myers Inc 301 582 1552	Tri State Marine Dist Inc 301 867 1447
Al Maurer 717 864 3135	Walter J. Construction 717 392 8280
W. R. Moody Contractor 412 872 6304	

Belleveille Auction

Belleveille, Pa. August 8, 1979

CATTLE 92. Compared with last Wednesday's market: Standard slaughter steers (holsteins) 52.00-54.60. Utility & Commercial slaughter cow 46.50-49.85, Cutters 42.25-47.00, Canner & Low Cutter 39.25-43.00. Yield

\$\$\$ \$\$\$

OUR GRADED AND VET INSPECTED FEEDER PIGS CAN HELP YOUR DOLLARS GROW! OUR KNOWLEDGEABLE BUYERS WILL SELECT QUALITY FEEDER PIGS FOR YOUR APPROVAL.

CALL COLLECT **BOB TINDALL**
SOUTH CHARLESTON, OHIO
513-462-8797
OR
RAYMOND BOYCE LIVESTOCK CO.
UNIONVILLE, TENNESSEE
615-294-5102

SPECIAL NOTICE

VINTAGE SALE STABLES, INC.
12 miles east of Lancaster at Paradise, PA.
Proudly Announces

A BUTCHER HOG AUCTION Every Monday AT 1:00 P.M.

This will be in addition to our regular Wednesday and Saturday Butcher Hog Auctions.
No waiting to unload.
Will receive hogs anytime Monday morning.
For More Information Call
L. Robert Frame, Manager
717-442-4181 768-8204