

**CENTRAL PA. FARMS**

**Centre Co.** - 33 acre farmette 7 miles East of Centre Hall in Brush Valley features Historic round barn, 2 story frame dwelling in good condition, & spring fed stream. Land lays nicely - 6 acres tillable, 10 acres pasture & 15 acres woodland \$114,500.

**Centre County** - 215 acre farm located in Curtin Twp, in the vicinity of Romola, PA, adjacent to Spoul State Forest. This picturesque farm with tillable and wooded acreage includes a 2 story frame house with aluminum siding and large attached screened porch and a separate 2 car garage both in good condition. A stream flows throughout the year and provides water supply for the house and pond. Excellent for and investment, ideal location for pleasure horses or just plain recreation.

**Centre County** - Located near Spring Mills, this 75 acre farm features 30 acres of tillable land, 12 acres of pasture and 33 acres of woodland. A small stream flows through the property. Buildings include a 2 story frame house w/aluminum siding, 40'x70' bank barn w/29'x39' attachment, f and 4 corn cribs w/a total capacity of 4,200 bu. of shelled corn. The barn is equipped for farrowing & finishing hogs. Approximately 18 miles from State College, this property is reasonably priced at \$97,500.

**Huntingdon County** - Located near Manor Hill this 212 acre farm features 150 acres of productive tillable land, 17 acres of pasture, and 40 acres of woodland, it has a 2 story brick farm house, 2 story bank barn with 28 stanchions, milk house, and implement shed and crib combination. A stream flows through the farm and it has a nice secluded setting. It is also close to the Stone Valley Recreational Area and the Whipple Dam State Park. Very realistically priced at \$177,500.

**Clearfield County** - Established KOA campground in Bradford Twp, Woodland, Pa 1/2 mile from I-80. 20 Acres w/additional 30 acres available. Store, laundry, boating, fishing, & swimming.

**Centre County** - Business opportunity in Brush Valley, featuring a 40'x40' 2 story commercial building w/20'x24' 1 story attachment that has a walk in cooler, 2 story frame house w/2 baths & 4 bedrooms. Both are situated on a 2.24 acre lot in Madisonburg and are in good condition. Additional 1.58 acres adjoining are available. The property also has a storage barn and a corn crib. The commercial building has many potential uses and a large parking area. Shown by appointment only and reasonable priced at \$65,000.

**Centre County** - Located near Boalsburg, PA, this 44 acre farm features a good barn & 40 acres of highly productive tillable land. It has excellent frontage. Sound 2 story frame house and shop can be purchased at a later date for a very reasonable price \$94,500 without house.

**Columbia County** - Price Reduced - 533 acre grain farm features an excellent location between Bloomsburg & Danville, it has 350 acres of tillable highly productive land which lays very nicely. There are 3 homes, 2 barns, & a complete grain drying facility with 2 elevator legs & an American Batch dryer. The farm has 6 streams & a generous amount of road frontage. 1.80 divides the farm & each portion could be sold separately to simultaneous buyers. Prices - Complete farm \$885,000 w/owner financing. Field equipment available.

**Northumberland County** - Ideal for general farming, this 138 A farm features approx 121 A of nice laying, highly productive tillable land & a very large 2 story bank barn. Adjacent to Milton, it has a large amount of road frontage & public water & sewer is available. Although the property does not have a dwelling the purchaser can purchase a new dwelling at cost. An excellent investment opportunity at a reduced price of \$310,000.

**Centre County** - Bald Eagle area, 93 acre farm, 80 acres tillable, good productive land, no buildings. Priced reduced to \$83,500.

Be sure to visit our display at Ag Progress Days. For the fourth consecutive year, Kissinger Leonard & Associates will have a complete display at Ag Progress days. If you are thinking of buying or selling please feel free to stop by & chat w/the farm folks of KL & A.

**CENTRAL PA. LAND, CABINS**

Many land parcels and several farmettes available. Free list available



**FARM & LAND DEPARTMENT**

Evenings Call:

- Don Myers PH: (814) 422-8111
- Fred Strouse PH: (814) 364-1705
- Mel Rockey PH: (814) 466-6638
- Richard D. Reed (Bedford) PH: (814) 839-4271
- Larry W. Platt (Lewisburg) PH: (717) 568-5563

245 South Allen St. State College

PH (814) 234-4000

"Serving Central Pa Since 1933"

**FARM FOR SALE**

209 Acre farm - old farm house and excellent dairy barn, house and barn on west side of Rt. 220, 5 miles north of Towanda, PA (Bradford Co.)

Call or Write:  
**Ellen Bustin**  
217 N. Main St.  
Towanda, PA 18848  
717-265-6534 or 265-8986

**FARMS FOR SALE**

71 acres, \$117,000, house and barn in York Co.

Approximately 1500 acres w/5 houses, dairy barns, heifer pens, and potato storage. Buildings in good condition, a little over \$1000 an acre.

Call Bob Kreider, Farm Agent  
717-569-1011



**Century 21**  
**JACK JOHNSON,**  
Realtor

**LYCOMING CO.**

**Owner Moving - Priced Reduced**

Good taste is evident in every room of this 3 bedroom rustic home. Convenience galore in the modern kitchen with counter top Nutone food center, unique combination wood - coal or electric stove, and custom built cabinets. Additional features include 15 x 31 living room with Vigilant cast iron fireplace that furnishes central heating, 2 baths, 14 x 20 den, central vacuum system and extra installation. This home is situated on 18 acres and has a \$1,000,000 view, enough wood for the next 100 yrs. is as close as the door with easy access into the woods. Located in Rd 1, Muncy \$73,900.

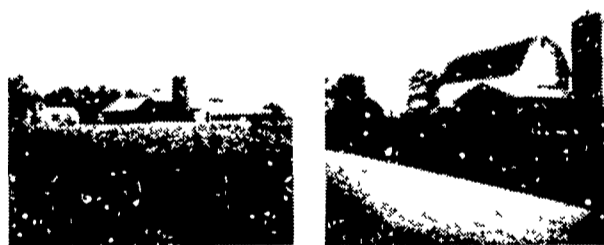
**JONES REAL ESTATE**

9 South Main St.  
Muncy, PA

717-546-2276

717-323-7802

**WISCONSIN DAIRY FARMS**



**80 Acre**  
**Good Dairy**  
**Farm**

**\$95,000**

**120 Acre**  
**Good Dairy**  
**Farm**

**\$110,000**

**Contact 717-354-4158**

**NEW YORK FARMS**  
**CAYUGA CO.**

#1 - 96 acres, 60 tillable, balance pasture & woods, live spring, excellent water supply, 84' barn, suitable for beef or hogs plus a 5 bedroom Colonial home with fireplace, good road, possession immediate, owner will divide. \$79,000.

#2 - 106 acres, 60 tillable, balance woods & pasture, live trout stream, pond, excellent water supply, barn equipped for 30 plus cows, milkhouse, tool sheds, concrete silo, excellent tillable soil, on good road, some machinery available plus remodeled insulated 4 bedroom home, family room with stove section, large eat-in kitchen. Owner will finance. \$82,000.

**By Appointment Only**  
**WAYUGA REALTY**

Box 217  
Red Creek, NY 13143  
Office-315-754-6554  
Home-315-754-8734

**NEW YORK STATE**  
**DAIRY FARM**  
**FOR SALE**

Nice 180 acre Madison Co. farm. 100 acres tillable, 20 year old barn has 55 stanchions, 400 gal. bulk tank, 16x40 concrete silo, very nice large home \$118,000. 29% down, balance 20 yr. mortgage held by owner - to responsible party. A real nice place, must be seen.

We are experienced to handle lease-back situations.

**DECKER REAL ESTATE**

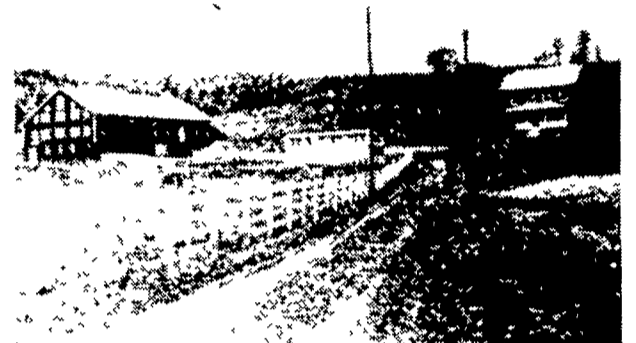
**Mel Manasse, Associated Broker**

Whitney Point, NY

607-692-3665

607-692-4540 (anytime)

**THIS WEEK'S SPECIALS**



109A limestone modern dairy, 33 stalls, plus loose housing, pipeline, 4 BR brick home, all conveniences, farm, pond, cows, equipment, and crops available for immediate possession.

90A Modern hog farrow-to-finish, all buildings new since 1972.

Also other farm properties and woodland available.

**BLUE BALL REALTY**

Blue Ball, Pa.

Phone: 717-354-4536

**47 ACRE HOG FARM**  
**IRON BRIDGE ROAD**  
**EAST DONEGAL TOWNSHIP**

Zoned agricultural - 40 acres tillable in a high state of cultivation plus a 700 hog modern confinement facility capable of finishing out 2100 hogs per year. Fully automated facility with excellent well water. 700 ft. of hard road frontage. No house or barn on property. Acreage is presently planted in corn yielding 125 bushels per acre. Call today to see this fine farming investment!

**NORWOOD ASSOCIATES,**

**INC. REALTOR**

717-426-1163

or

653-4351

**NORTHUMBERLAND CO.**

- 65 acre farm with good productive clay and shale soil.
- Level land with stream.
- 9 room house in good condition with modern bath and kitchen
- 4 bay barn and other buildings.
- 70 tillable acres to rent nearby.
- Priced right \$107,000.

We have buyers for Farms.  
Call us today if you want to sell.



Ask for Jerry Frey  
717-898-8441